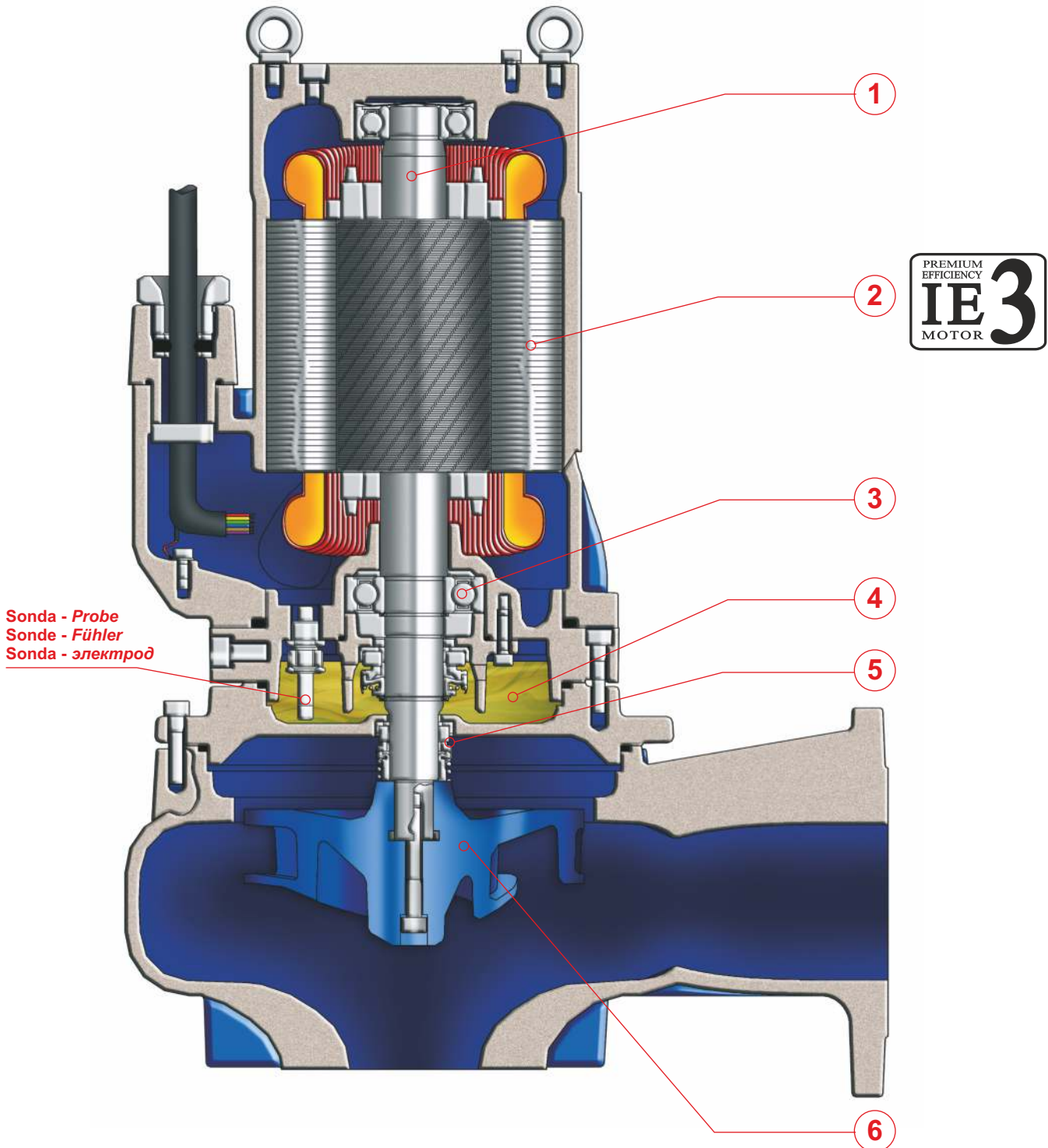


# VORTEX

Elettropompe sommergibili vortice 3-6 pale 2 poli  
 Submersible electric pumps vortex 3-6 blades 2 poles  
 Electropompe submersible vortex 3-6 aubes 2 pôles  
 Tauchmotorpumpe mit Freistromlaufrad 3-6 Schaufeln, 2-polig  
 Bombas sumergibles vortex 3-6 alabes 2 polos  
 Вихревые погружные электронасосы с 3-6 лопастями 2 полюса





**IMPIEGHI**

Le elettropompe sommergibili vortice sono utilizzate prevalentemente per il pompaggio di acque cariche e luride anche con corpi solidi e filamentosi in sospensione. In particolare per lo svuotamento di pozzi di raccolta liquami da fosse biologiche e pozzi di raccolta acque usate in genere, acque sporche non grigliate.

**PARTICOLARITÀ COSTRUTTIVE**

Elettropompe sommergibili di robusta e compatta costruzione, motori elettrici alloggiati in vano a tenuta stagna, collegati mediante alberi di lunghezze ridotte alle giranti situate in voluta tramite interposizione di camera olio tra parte idraulica e motore elettrico.

**MATERIALI**

Fusioni principali	Ghisa EN-GJL-250
Girante	Ghisa EN-GJL-250+Ni
Cavo elettrico	Neoprene H07RN/F
Albero	Acciaio inossidabile AISI431 / Duplex
O-rings e paraolio	Nitrile
Bullonerie	Classe A4 - AISI316
Tenuta meccanica	Carburo di silicio / Carburo di silicio



**APPLICATIONS**

Les pompes submersibles vortex sont utilisées principalement pour le pompage d'eaux chargées et d'eaux usées pouvant contenir des corps en suspensions. En particulier pour la vidange de puits de collecte d'eaux noires, d'eaux usées en générales et eaux sales non grillées.

**PARTICULARITÉ DE CONSTRUCTION**

Pompes submersibles robustes et compactes, moteurs électriques logés en enceinte étanche, reliés par des arbres de longueurs réduites aux roues, avec interposition d'une chambre à huile entre la partie hydraulique et le moteur électrique.

**MATÉRIAUX**

Moulures principales	Fonte EN-GJL-250
Roue	Fonte Sferoidale EN-GJL-250+Ni
Câble électrique	Néoprène H07RN/F
Arbre	Acier inoxydable AISI431 / Duplex
O-ring et joints	Nitrile
vis	Classe A4 - AISI316
Garniture mécanique	Carb. de silicium / carbure de silicium



**UTILIZACION**

Las bombas sumergibles vortex se utilizan principalmente para bombear aguas muy sucias o con filamentos en suspensión. Particularmente para vaciar pozos de líquidos varios, de fosas biológicas y pozos de recogida de aguas usadas, i en general aguas no filtradas.

**DIFERENCIAS PRINCIPALES**

Son bombas sumergibles de robusta y compacta construcción, motores eléctricos situados en compartimento separado, conectadas mediante ejes cortos con los impulsores interpuestos con una cámara de aceite entre la parte hidráulica i el motor eléctrico.

**MATERIALES**

Aleaciones principales	Hierro Fundido EN-GJL-250
Impulsor (turbina)	Hierro Fundido EN-GJL-250+Ni
Cable eléctrico	Neopreno H07RN/F
Eje	Acero inoxidable AISI431 / Duplex
Anillo de sellados y O-Rings	Nitrilo
Tornillos	Clase A4 - AISI316
Sello mecánico	Carburo de silicio / Carburo de silicio



**APPLICATION**

Submersible electric vortex pumps are used predominantly for pumping sewage water and suspended solid bodies. In particular for emptying septic tanks and for other civil or industrial applications.

**CONSTRUCTION DATA**

Submersible electric pumps, robust in construction, watertight electric motors accommodated in compartment, connected, by shafts of reduced lengths, to the impellers situated at the pump casing by the interposition of oil chamber between the hydraulic side and the electric motor.

**MATERIALS**

Motor housing	Cast iron EN-GJL-250
Impeller Spheroidal	Cast-iron EN-GJL-250+Ni
Electric cable	Neoprene H07RN/F
Shaft	Stainless Steel AISI431 / Duplex
O-rings and lip seal	Nitrile
Bolts	A4 - AISI316 class
Mechanical seal	Silicon Carbide / Silicon Carbide



**EINSATZBEREICHE**

Tauchmotorpumpen mit Freistromlaufrad werden vorwiegend zur Förderung von Abwasser mit Schwebstoffen eingesetzt. Speziell zur Entleerung von Fäkalientanks geeignet, für häusliche und industrielle Abwässer.

**AUSFÜHRUNG**

Robuste Tauchmotorpumpe mit wasserdichtem Motor, kompakte Bauart, Laufrad im Pumpengehäuse durch Ölkammer zum Motor getrennt.

**WERKSTOFFE**

Motorgehäuse	Grauguss EN-GJL-250
Laufrad	Sphäroguss EN-GJL-250+Ni
Anschlusskabel	Neoprene H07RN/F
Welle	Edelstahl AISI431 / Duplex
Wellendichtring und O-Ringe	Nitril
Schrauben	Edelstahl A4 - AISI316
Gleitringdichtung	Siliziumkarbid / Siliziumkarbid



**ОБЛАСТЬ ПРИМЕНЕНИЯ**

Вихревые погружные электронасосы используются, в основном, для перекачки средне- и сильнозагрязненной воды, в т. ч. с содержанием твердых взвешенных частиц и/или волокнистых материалов. В частности, для опорожнения канализационных ям и накопительных емкостей, для перекачки нефилтрированных сточных жидкостей.

**КОНСТРУКЦИОННЫЕ ОСОБЕННОСТИ**

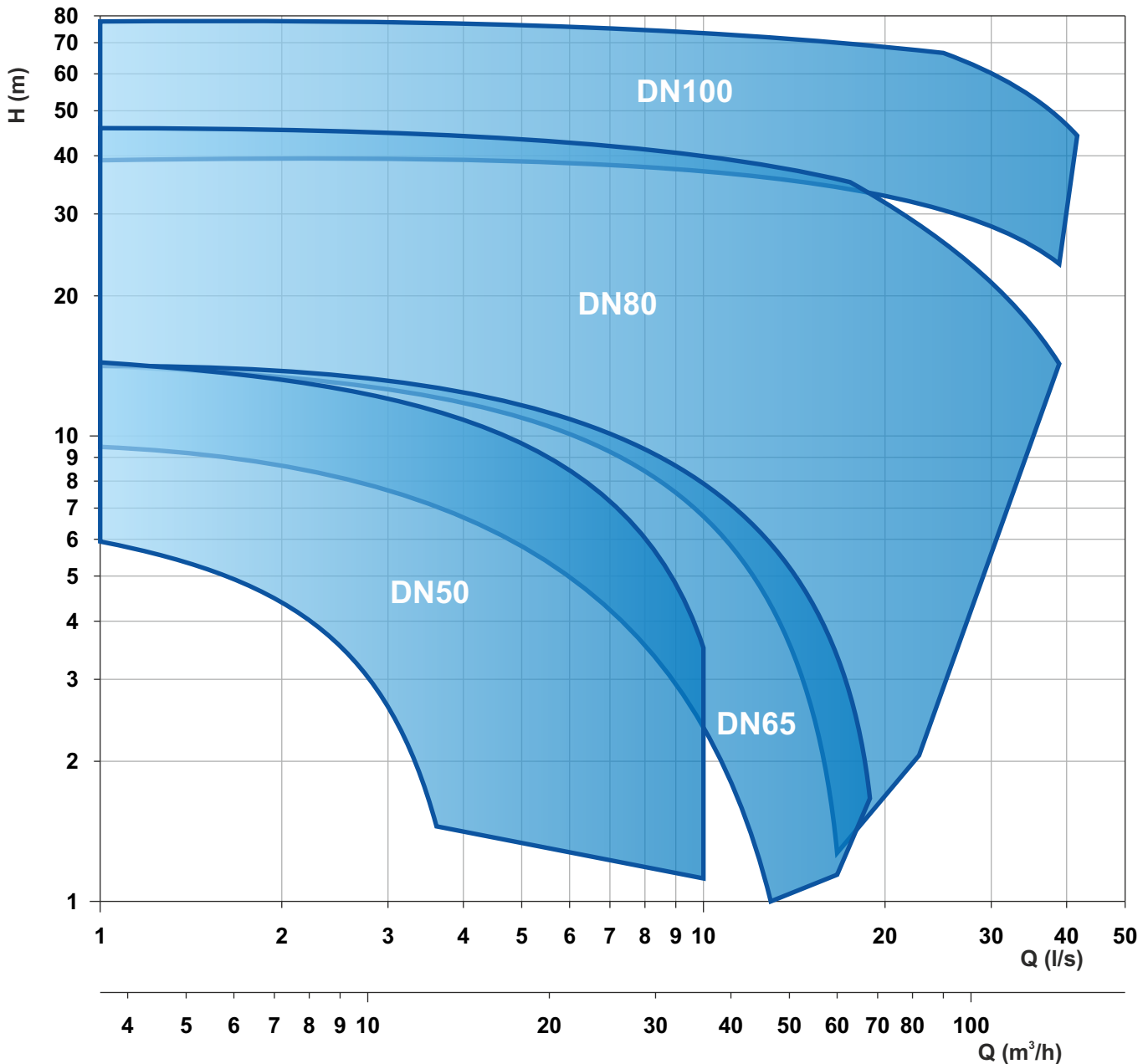
Погружные электронасосы с прочной и компактной конструкцией. Электродвигатели размещены в секции с герметичным уплотнением и соединены через валы небольшой длины с рабочими колесами, расположенными в гидравлической камере. Валы проходят через масляную камеру между гидравликой и электродвигателем.

**МАТЕРИАЛЫ**

Основные литые компоненты	Чугун EN-GJL-250
Рабочее колесо	Чугун EN-GJL-250+Ni
Электрокабель	Неопрен H07RN/F
Вал	Нержавеющая сталь AISI431/Дуплекс
Уплот. кольца и манжета	Нитрил
Винты	Класс A4 - AISI316
Мех. уплотнение	Карбид кремния/Карбид кремния.



## VORTEX


Elettropompe sommergibili vortice 3-6 pale 2 poli  
 Submersible electric pumps vortex 3-6 blades 2 poles  
 Electropompe submersible vortex 3-6 aubes 2 pôles  
 Tauchmotorpumpe mit Freistromlaufrad 3-6 Schaufeln, 2-polig  
 Bombas sumergibles vortex 3-6 alabes 2 polos  
 Вихревые погружные электронасосы с 3-6 лопастями 2 полюса



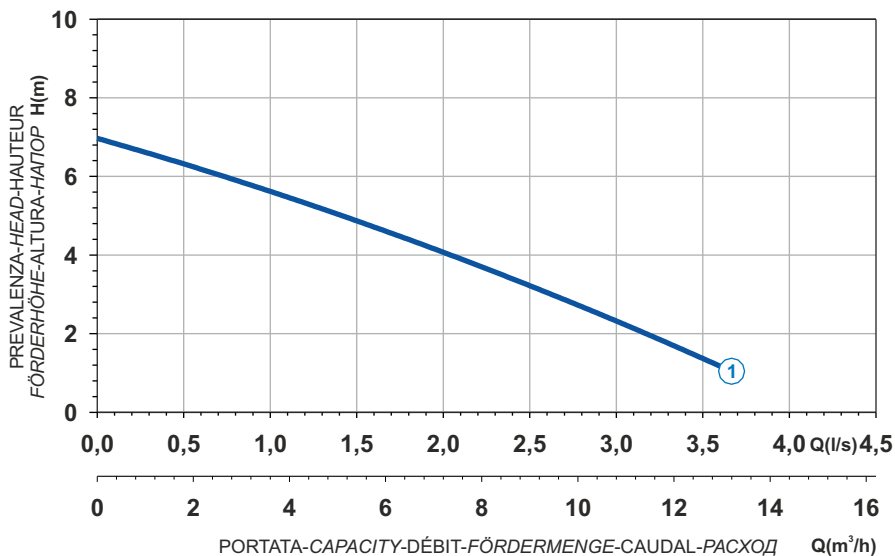
Le schede tecniche sono disponibili al sito [www.faggiolatipumps.com](http://www.faggiolatipumps.com)  
 Technical data sheets are available on our web site [www.faggiolatipumps.com](http://www.faggiolatipumps.com)  
 Les fiches techniques sont disponibles sur notre site web [www.faggiolatipumps.com](http://www.faggiolatipumps.com)  
 Technische Datenblätter finden Sie auf unserer Internetseite [www.faggiolatipumps.com](http://www.faggiolatipumps.com)  
 Las hojas de datos técnicas están disponibles en nuestro web site [www.faggiolatipumps.com](http://www.faggiolatipumps.com)  
 Технические спецификации имеются на Интернет-сайте [www.faggiolatipumps.com](http://www.faggiolatipumps.com)




 Ghisa EN-GJL-250  
 Fonte EN-GJL-250  
 Hierro fundido EN-GJL-250

 Cast Iron EN-GJL-250  
 Grauguss EN-GJL-250  
 Чугун EN-GJL-250

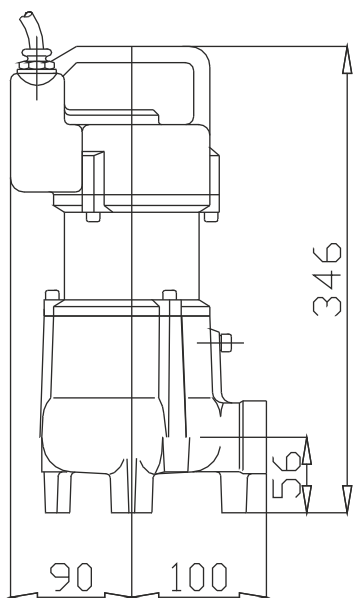
Curva caratteristica - Performance curve - Courbe caractéristique  
 Kennlinie - Curva característica - Характеристическая кривая



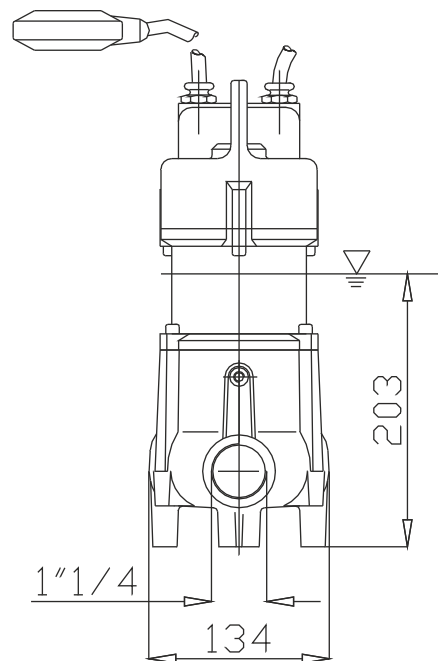
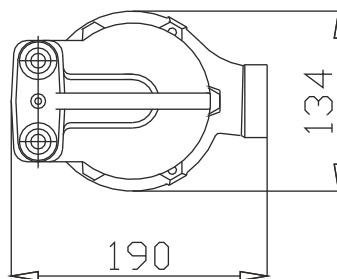
Power supply	1ph 230V 50Hz
R.P.M.	2850
Free passage (mm)	30
Discharge (mm)	1"1/4
Max Weight (Kg)	14



Curve N°	Code	Type	MOTOR			ATEX code 
			Rated power P2 (kW)	Rated current I (A)	Starting current Is (A)	
1	7000264	G206M6V1-D30AB1	0,5	3,2	11,8	-

## Dimensioni - Dimensions - Dimensions - Abmessungen - Dimensiones - Габариты (mm)



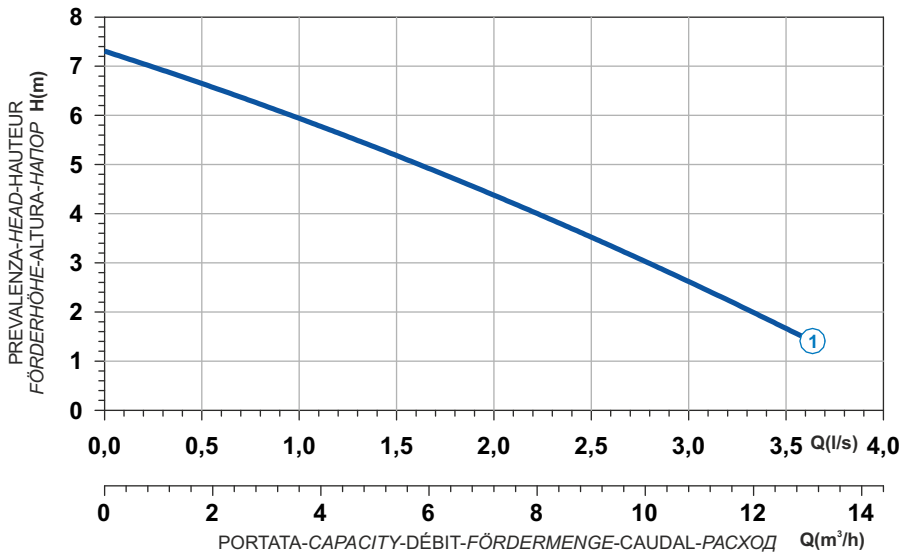
▽ LIVELLO MINIMO DI SOMMERGIBILITÀ  
 MINIMUM SUBMERSIBLE LEVEL  
 NIVEAU MINIMUM D'IMMERSION  
 MINDESTWASSERSTAND  
 NIVEL SUMERGIBLE MÍNIMO  
 МИНИМАЛЬНАЯ ГЛУБИНА ПОГРУЖЕНИЯ




 Ghisa EN-GJL-250  
 Fonte EN-GJL-250  
 Hierro fundido EN-GJL-250

 Cast Iron EN-GJL-250  
 Grauguss EN-GJL-250  
 Чугун EN-GJL-250

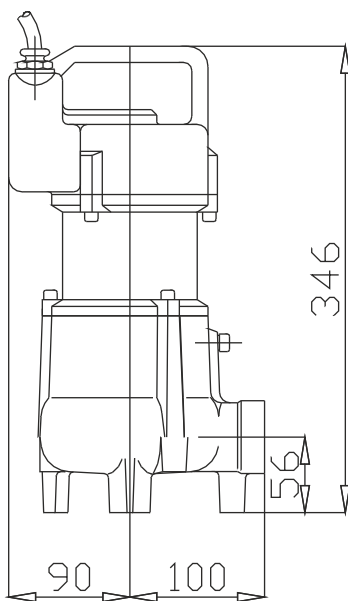
**Curva caratteristica - Performance curve - Courbe caractéristique  
Kennlinie - Curva característica - Характеристическая кривая**



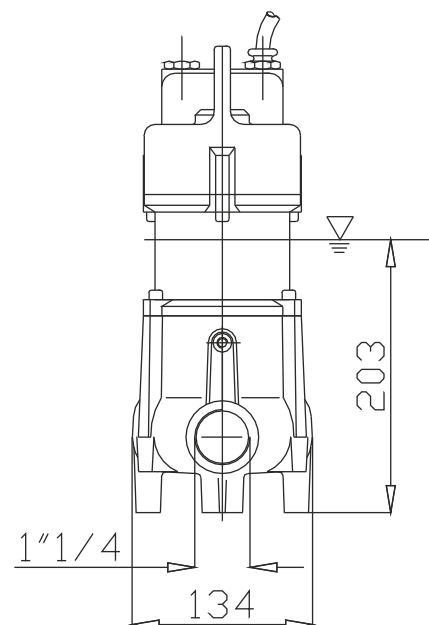
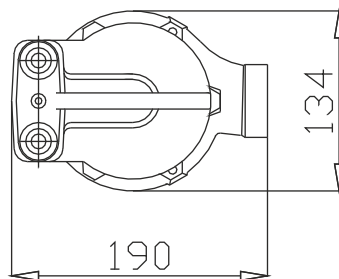
Curve N°	Code	Type	MOTOR			ATEX code 
			Rated power P2 (kW)	Rated current I (A)	Starting current Is (A)	
1	7002139	G206T6V1-D30AA0	0,6	1,2	5,4	-

Power supply	3ph 400V 50Hz
R.P.M.	2850
Free passage (mm)	30
Discharge (mm)	1"1/4
Max Weight (Kg)	13

**Dimensioni - Dimensions - Dimensions - Abmessungen - Dimensiones - Габариты (mm)**



▽ LIVELLO MINIMO DI SOMMERSIBILITÀ  
 MINIMUM SUBMERSIBLE LEVEL  
 NIVEAU MINIMUM D'IMMERSION  
 MINDESTWASSERSTAND  
 NIVEL SUMERGIBLE MÍNIMO  
 МИНИМАЛЬНАЯ ГЛУБИНА ПОГРУЖЕНИЯ



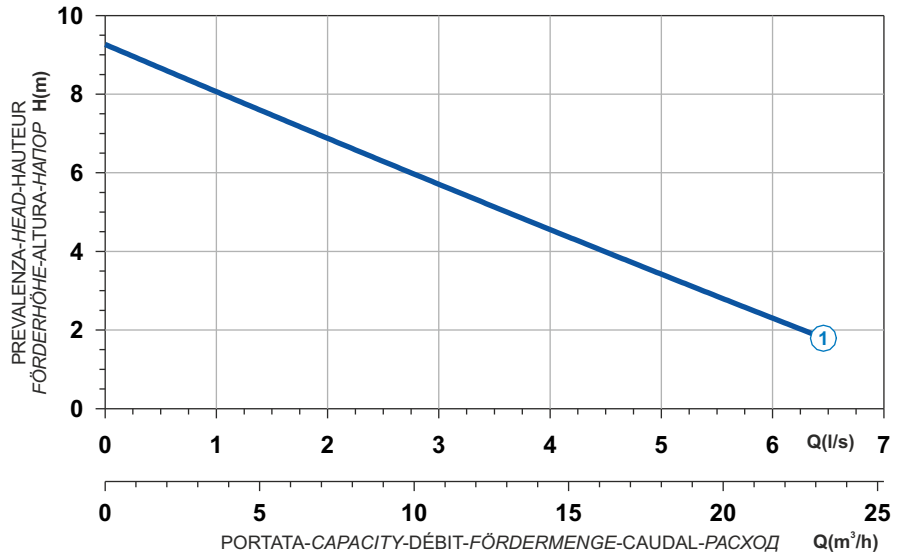


- Ghisa EN-GJL-250
- Fonte EN-GJL-250
- Hierro fundido EN-GJL-250

- Cast Iron EN-GJL-250
- Grauguss EN-GJL-250
- Чугун EN-GJL-250



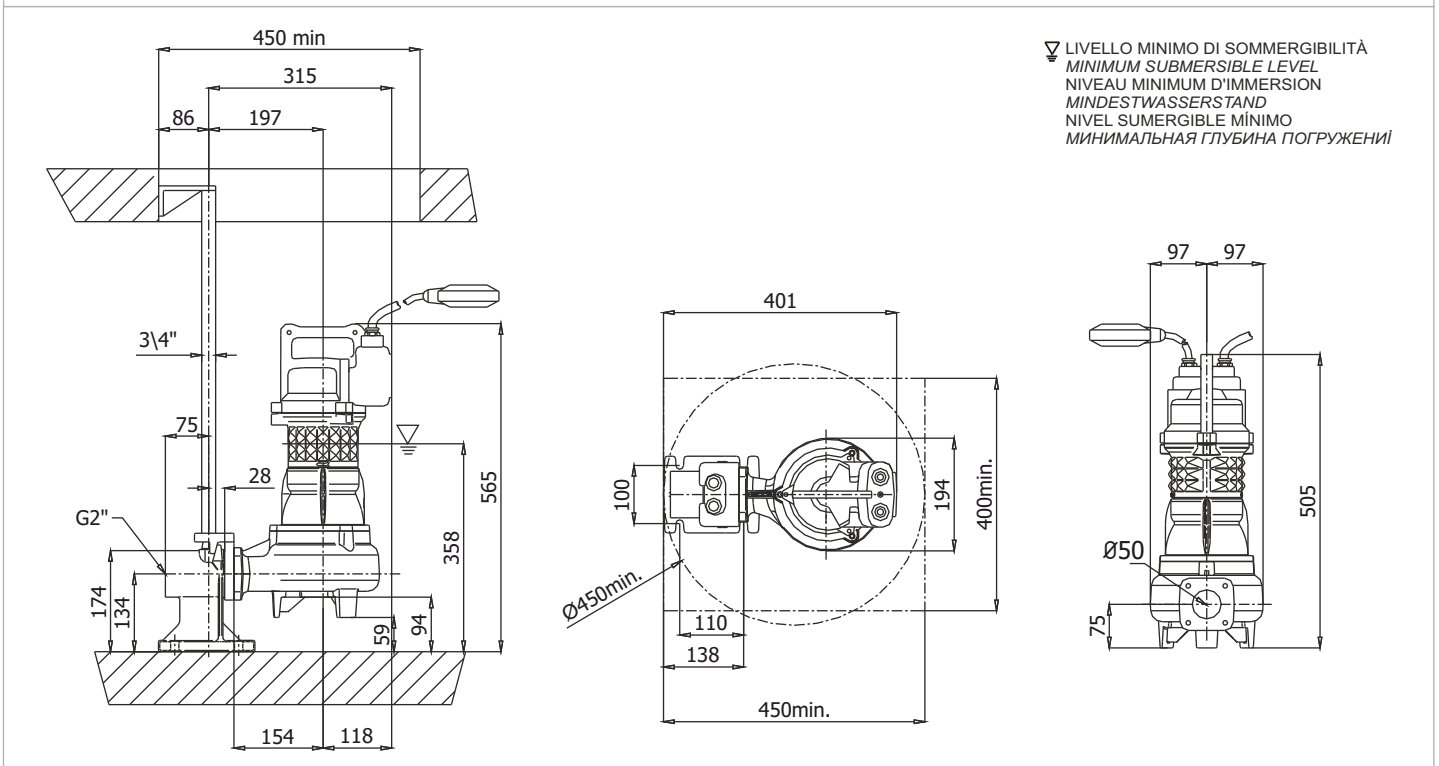
Curva caratteristica - Performance curve - Courbe caractéristique  
Kennlinie - Curva característica - Характеристическая кривая






Power supply	1ph 230V 50Hz
R.P.M.	2850
Free passage (mm)	48
Discharge (mm)	DN 50
Max Weight (Kg)	31

Curve N°	Code	Type	MOTOR			ATEX code
			Rated power P2 (kW)	Rated current I (A)	Starting current Is (A)	
1	7000814	G272M3V2-K48AB1	1,1	6,6	24,4	-

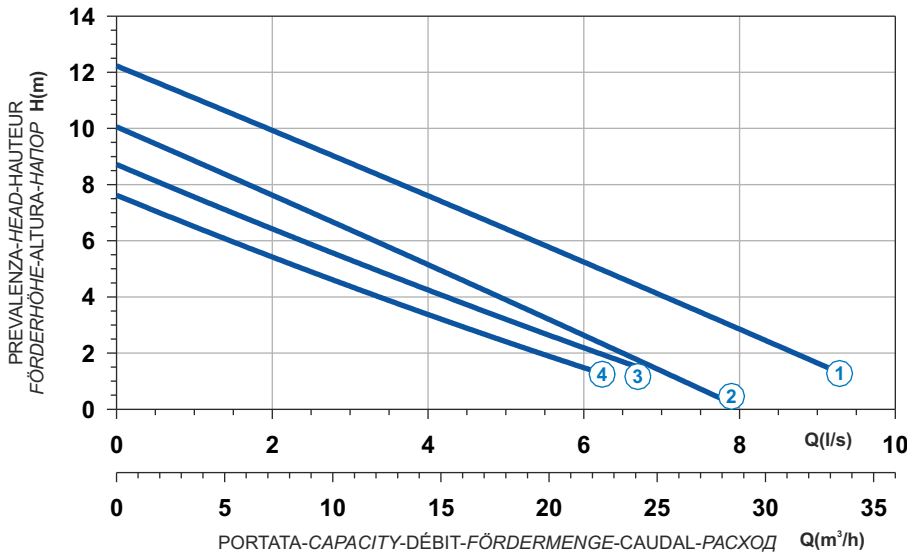
Dimensioni - Dimensions - Dimensions - Abmessungen - Dimensiones - Габариты (mm)




 Ghisa EN-GJL-250  
 Fonte EN-GJL-250  
 Hierro fundido EN-GJL-250

 Cast Iron EN-GJL-250  
 Grauguss EN-GJL-250  
 Чугун EN-GJL-250

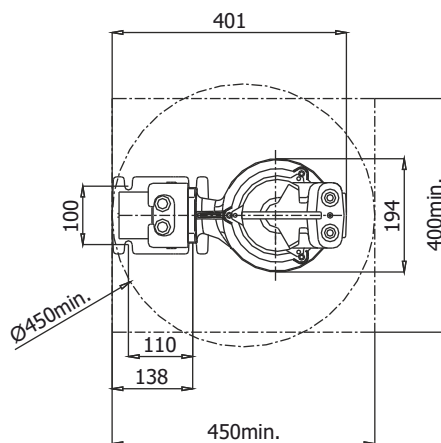
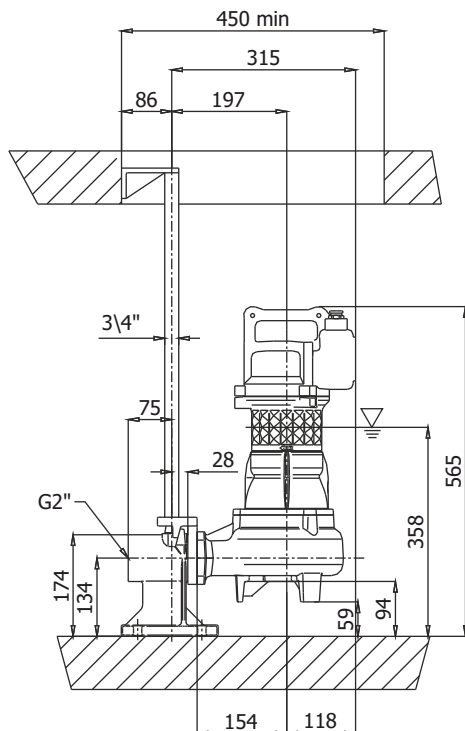
**Curva caratteristica - Performance curve - Courbe caractéristique  
Kennlinie - Curva característica - Характеристическая кривая**



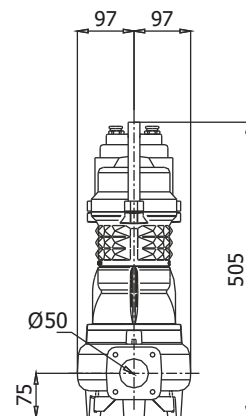
Curve N°	Code	Type	MOTOR			ATEX code 
			Rated power P2 (kW)	Rated current I (A)	Starting current Is (A)	
1	7000854	G272T3V1-K48AA0	1,9	3,5	20,7	-
2	7009010	G272T3V2-K48AA0	1,4	2,7	13,2	-
3	7008531	G272T3V6-K48AA0	1,1	2,4	11,8	-
4	7002243	G272T3V5-K48AA0	1,1	2,4	11,8	-

Power supply	3ph 400V 50Hz
R.P.M.	2850
Free passage (mm)	48
Discharge (mm)	DN 50
Max Weight (Kg)	31

**Dimensioni - Dimensions - Dimensions - Abmessungen - Dimensiones - Габариты (mm)**



▽ LIVELLO MINIMO DI SOMMERGIBILITÀ  
 MINIMUM SUBMERSIBLE LEVEL  
 NIVEAU MINIMUM D'IMMERSION  
 MINDESTWASSERSTAND  
 NIVEL SUMERGIBLE MÍNIMO  
 МИНИМАЛЬНАЯ ГЛУБИНА ПОГРУЖЕНИЯ

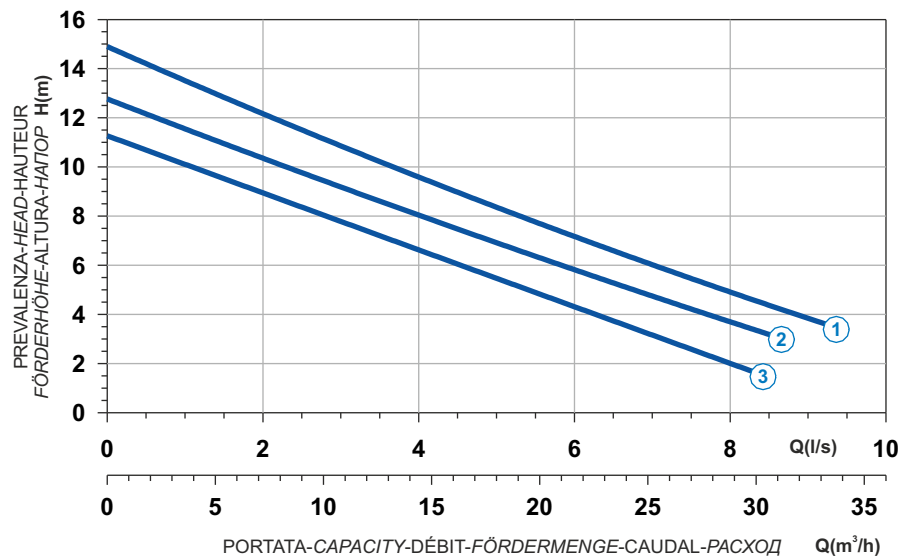




Ghisa EN-GJL-250  
 Fonte EN-GJL-250  
 Hierro fundido EN-GJL-250

Cast Iron EN-GJL-250  
 Grauguss EN-GJL-250  
 Чугун EN-GJL-250

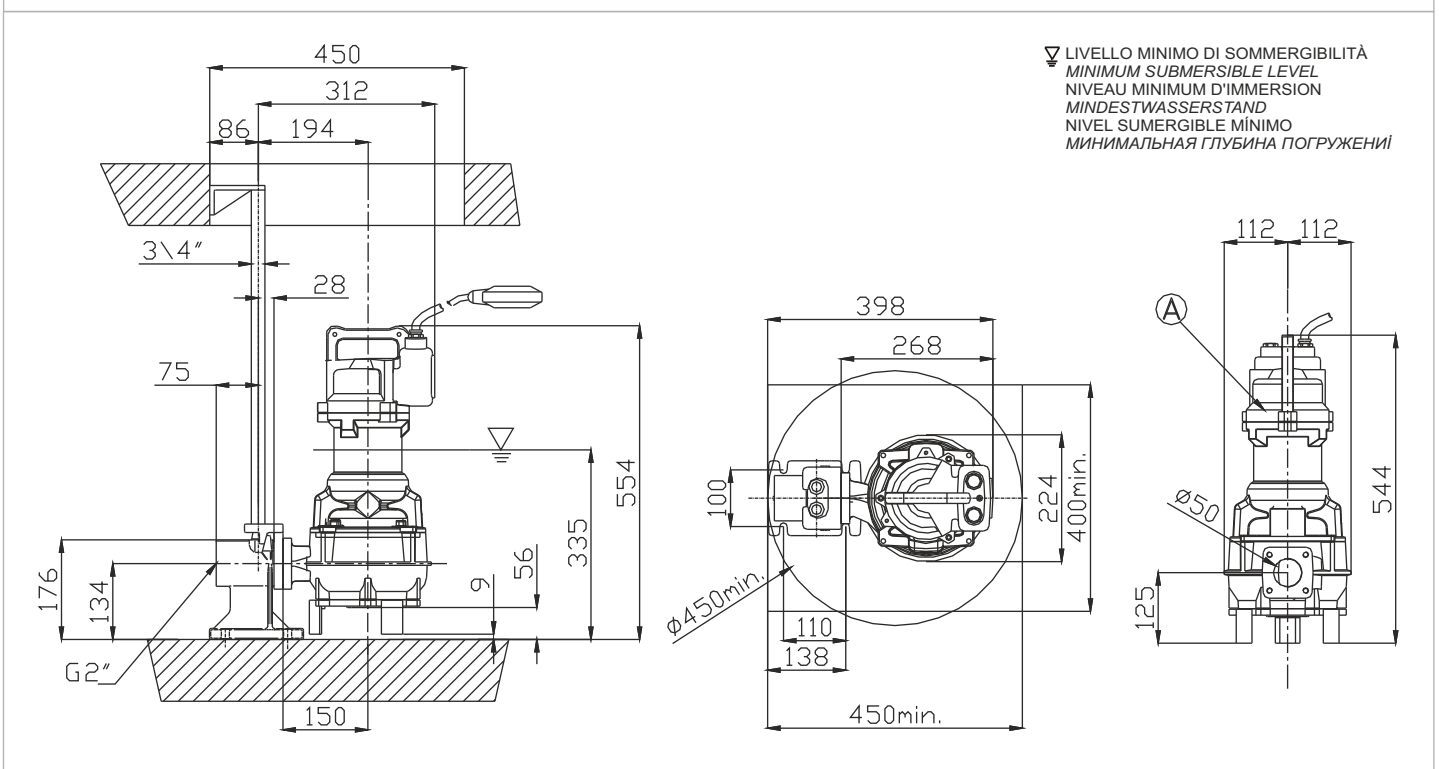
Curva caratteristica - Performance curve - Courbe caractéristique  
Kennlinie - Curva característica - Характеристическая кривая






Power supply	1ph 230V 50Hz
R.P.M.	2850
Free passage (mm)	50
Discharge (mm)	DN 50
Max Weight (Kg)	43

Curve N°	Code	Type	MOTOR			ATEX code
			Rated power P2 (kW)	Rated current I (A)	Starting current Is (A)	
1	7005432	G271M3V1-K50AB1	1,9	11,4	62,7	7005618
2	7006436	G271M3V2-K50AB1	1,5	9	33,3	7006438
3	7006437	G271M3V3-K50AB1	1,5	9	33,3	7006443

Dimensioni - Dimensions - Dimensions - Abmessungen - Dimensiones - Габариты (mm)

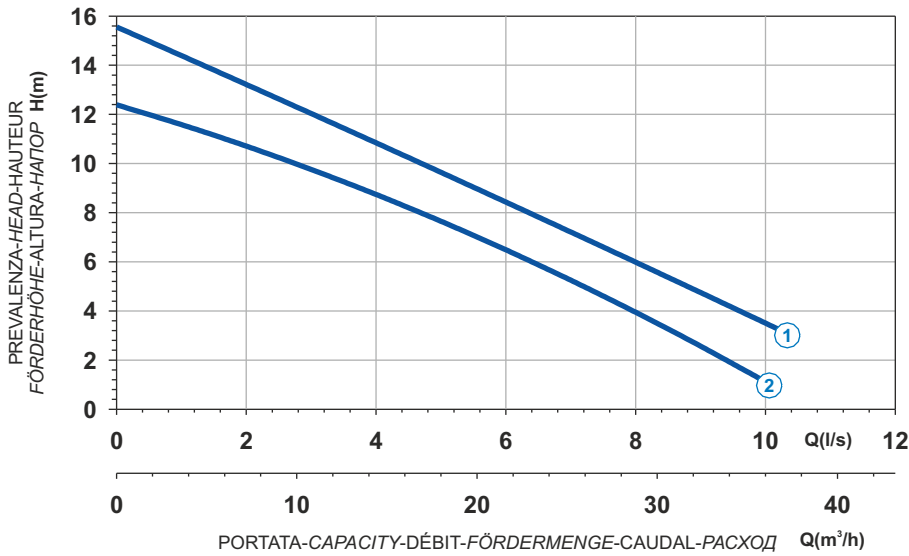





 Ghisa EN-GJL-250  
 Fonte EN-GJL-250  
 Hierro fundido EN-GJL-250

 Cast Iron EN-GJL-250  
 Grauguss EN-GJL-250  
 Чугун EN-GJL-250

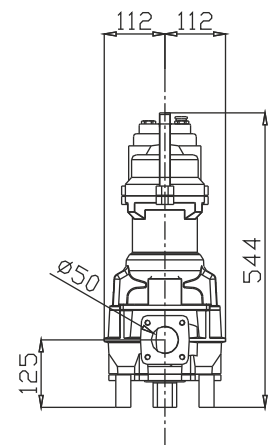
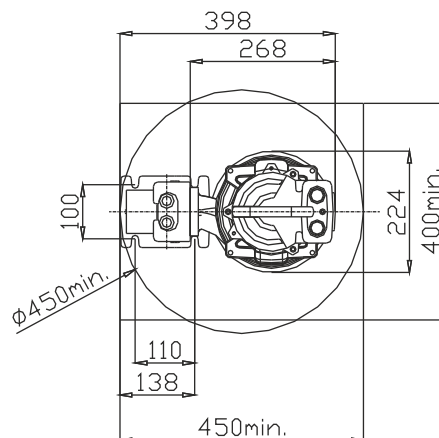
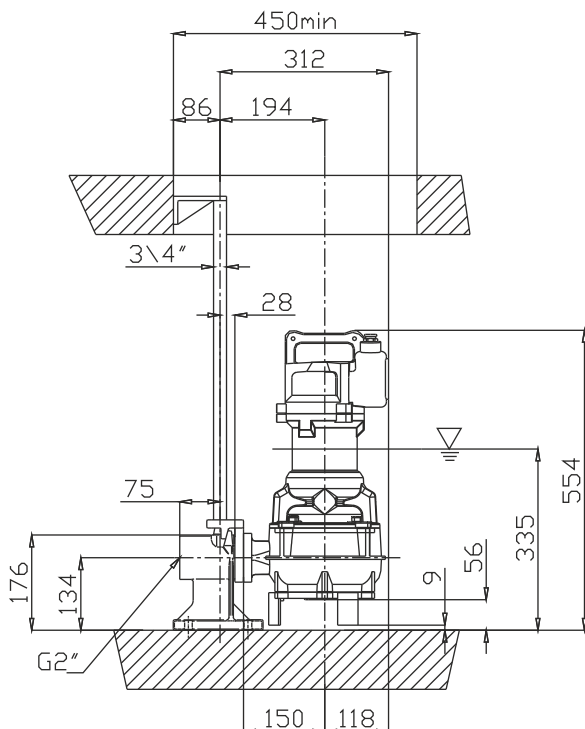
**Curva caratteristica - Performance curve - Courbe caractéristique  
Kennlinie - Curva característica - Характеристическая кривая**



Curve N°	Code	Type	MOTOR			ATEX code 
			Rated power P2 (kW)	Rated current I (A)	Starting current Is (A)	
1	7005419	G271T3V1-K50AA0	2,4	4,5	26,6	7005697
2	7005996	G271T3V2-K50AA0	1,8	3,5	17,2	7006433

Power supply	3ph 400V 50Hz
R.P.M.	2850
Free passage (mm)	50
Discharge (mm)	DN 50
Max Weight (Kg)	43

**Dimensioni - Dimensions - Dimensions - Abmessungen - Dimensiones - Габариты (mm)**



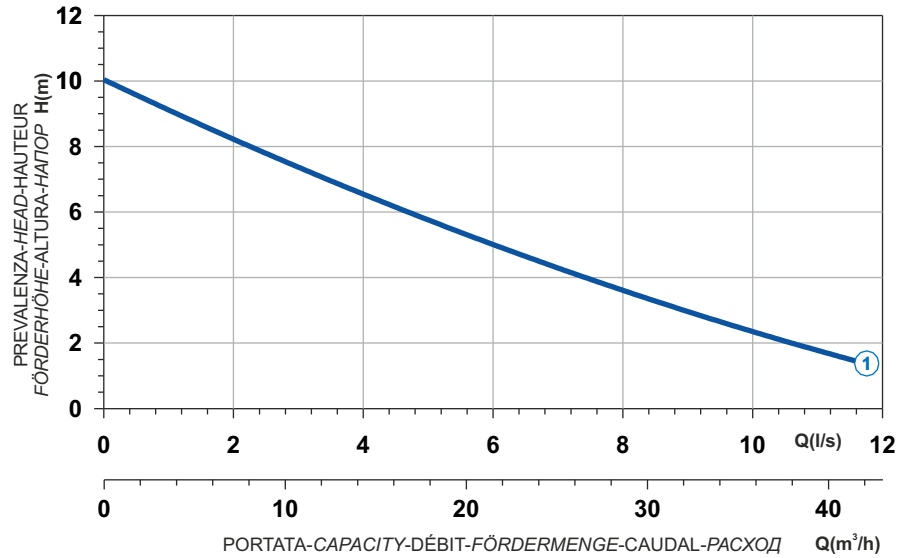
▽ LIVELLO MINIMO DI SOMMERGIBILITÀ  
 MINIMUM SUBMERSIBLE LEVEL  
 NIVEAU MINIMUM D'IMMERSION  
 MINDESTWASSERSTAND  
 NIVEL SUMERGIBLE MÍNIMO  
 МИНИМАЛЬНАЯ ГЛУБИНА ПОГРУЖЕНИЯ



- Ghisa EN-GJL-250
- Fonte EN-GJL-250
- Hierro fundido EN-GJL-250

- Cast Iron EN-GJL-250
- Grauguss EN-GJL-250
- Чугун EN-GJL-250

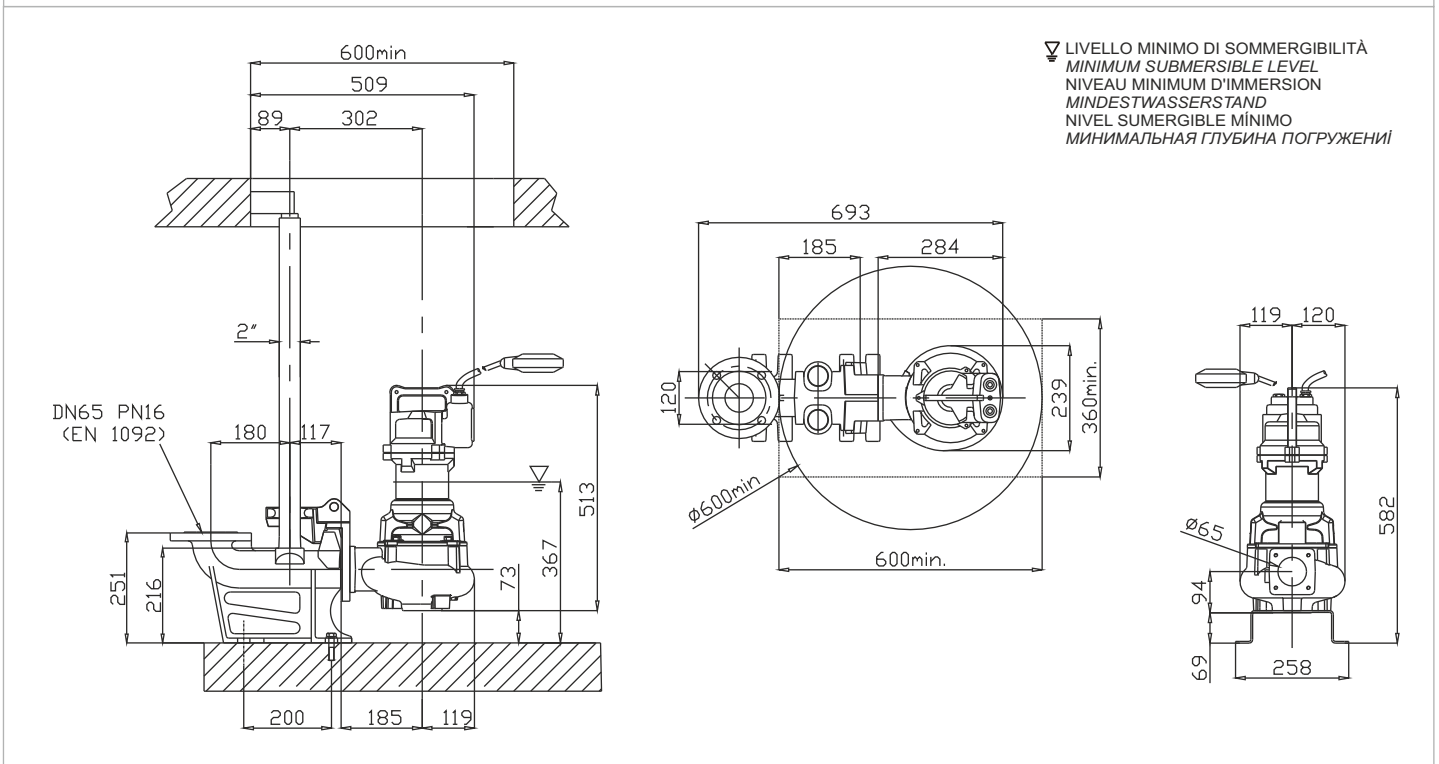
Curva caratteristica - Performance curve - Courbe caractéristique  
Kennlinie - Curva característica - Характеристическая кривая






Power supply	1ph 230V-50Hz
R.P.M.	2850
Free passage (mm)	65
Discharge (mm)	DN 65
Max Weight (Kg)	44

Curve N°	Code	Type	MOTOR			ATEX code
			Rated power P2 (kW)	Rated current I (A)	Starting current Is (A)	
1	7000846	G271M6V3-L65AB1	1,5	9	33,3	7000847

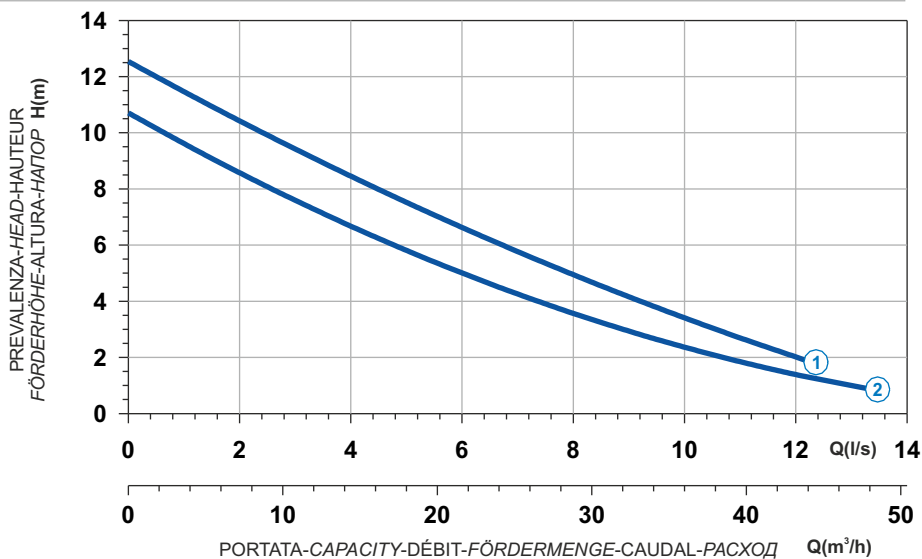
### Dimensioni - Dimensions - Dimensions - Abmessungen - Dimensiones - Габариты (mm)




 Ghisa EN-GJL-250  
 Fonte EN-GJL-250  
 Hierro fundido EN-GJL-250

 Cast Iron EN-GJL-250  
 Grauguss EN-GJL-250  
 Чугун EN-GJL-250

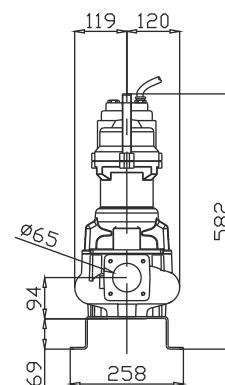
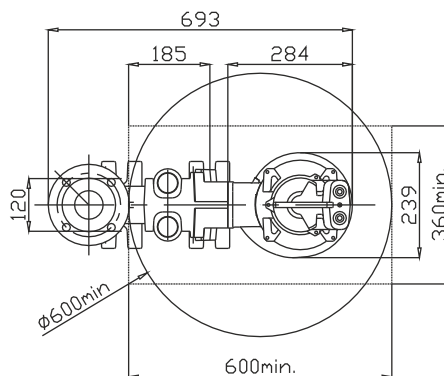
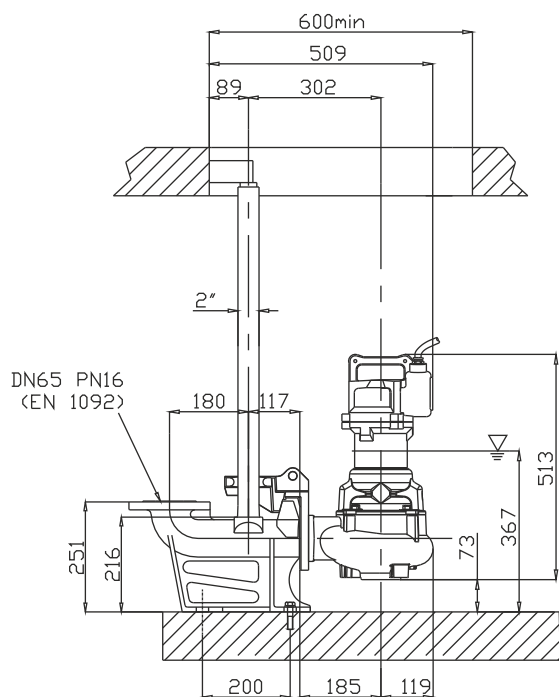
**Curva caratteristica - Performance curve - Courbe caractéristique  
Kennlinie - Curva característica - Характеристическая кривая**



Curve N°	Code	Type	MOTOR			ATEX code 
			Rated power P2 (kW)	Rated current I (A)	Starting current Is (A)	
1	7003121	G271T6V2-L65AA0	2,1	3,9	23	7000403
2	7000554	G271T6V3-L65AA0	1,8	3,5	17,2	7000839

Power supply	3ph 400V 50Hz
R.P.M.	2850
Free passage (mm)	65
Discharge (mm)	DN 65
Max Weight (Kg)	44

**Dimensioni - Dimensions - Dimensions - Abmessungen - Dimensiones - Габариты (mm)**



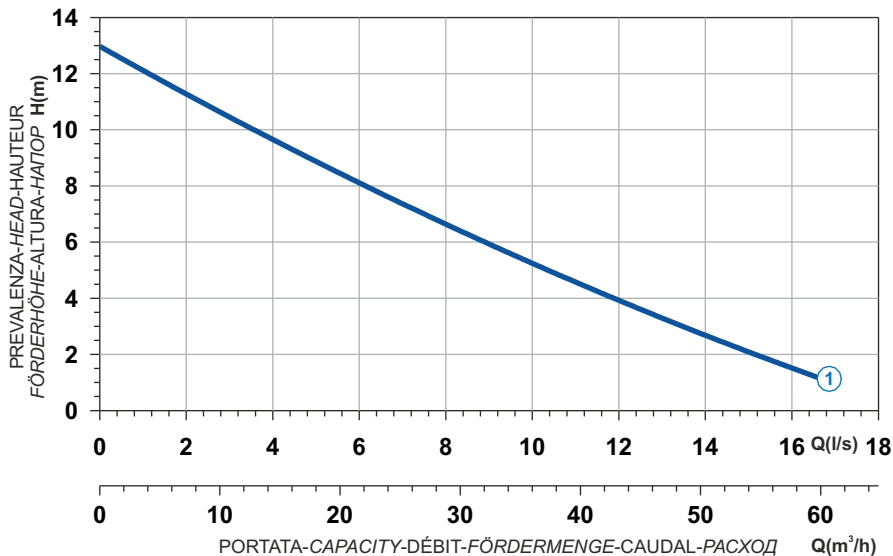
▽ LIVELLO MINIMO DI SOMMERGIBILITÀ  
 MINIMUM SUBMERSIBLE LEVEL  
 NIVEAU MINIMUM D'IMMERSION  
 MINDESTWASSERSTAND  
 NIVEL SUMERGIBLE MÍNIMO  
 МИНИМАЛЬНАЯ ГЛУБИНА ПОГРУЖЕНИЯ



- Ghisa EN-GJL-250
- Fonte EN-GJL-250
- Hierro fundido EN-GJL-250

- Cast Iron EN-GJL-250
- Grauguss EN-GJL-250
- Чугун EN-GJL-250

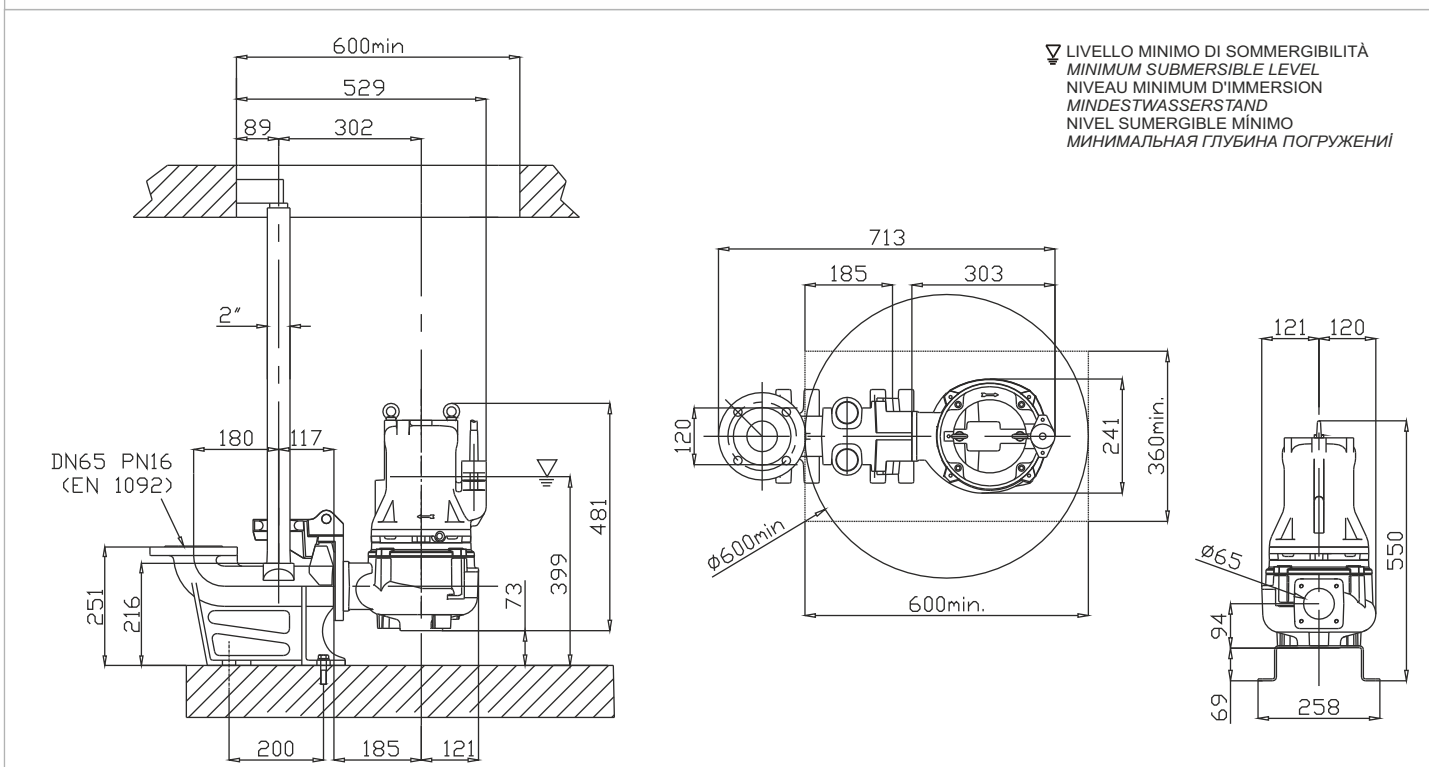
Curva caratteristica - Performance curve - Courbe caractéristique  
Kennlinie - Curva característica - Характеристическая кривая






Power supply	3ph 400V 50Hz
R.P.M.	2850
Free passage (mm)	65
Discharge (mm)	DN 65
Max Weight (Kg)	56

Curve N°	Code	Type	MOTOR			ATEX code
			Rated power P2 (kW)	Rated current I (A)	Starting current Is (A)	
1	7005671	G209T6V2-L65AA0	3,1	5,8	34,2	7000842

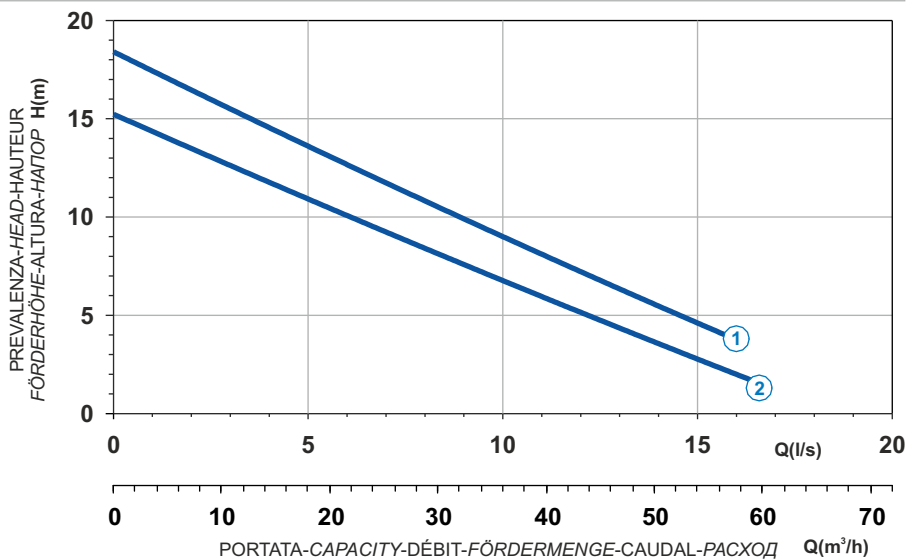
### Dimensioni - Dimensions - Dimensions - Abmessungen - Dimensiones - Габариты (mm)




 Ghisa EN-GJL-250  
 Fonte EN-GJL-250  
 Hierro fundido EN-GJL-250

 Cast Iron EN-GJL-250  
 Grauguss EN-GJL-250  
 Чугун EN-GJL-250

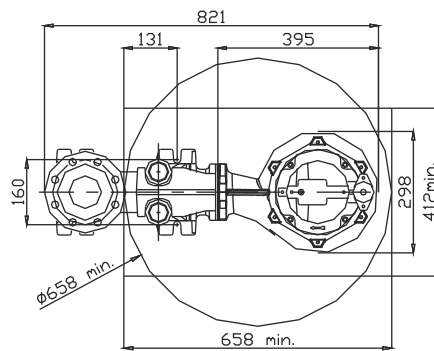
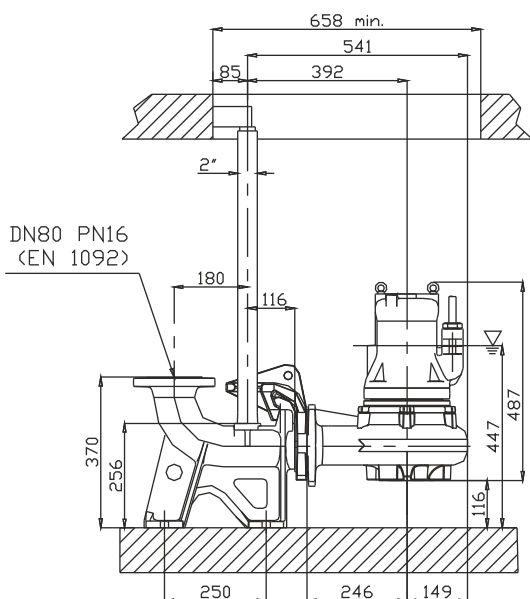
**Curva caratteristica - Performance curve - Courbe caractéristique**  
**Kennlinie - Curva característica - Характеристическая кривая**



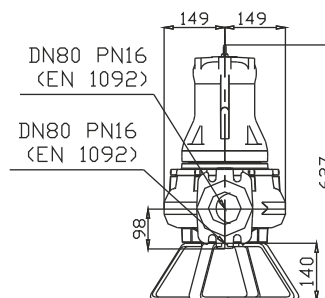
Curve N°	Code	Type	MOTOR			ATEX code 
			Rated power P2 (kW)	Rated current I (A)	Starting current Is (A)	
1	7002496	G209T3V1-M50AA0	3,9	7,2	42,5	7002807
2	7009360	G209T3V2-M50AA0	3,1	5,8	34,2	7008930

Power supply	3ph 400V 50Hz
R.P.M.	2850
Free passage (mm)	50
Discharge (mm)	DN 80
Max Weight (Kg)	62

## Dimensioni - Dimensions - Dimensions - Abmessungen - Dimensiones - Габариты (mm)



▽ LIVELLO MINIMO DI SOMMERGIBILITÀ  
 MINIMUM SUBMERSIBLE LEVEL  
 NIVEAU MINIMUM D'IMMERSION  
 MINDESTWASSERSTAND  
 NIVEL SUMERGIBLE MÍNIMO  
 МИНИМАЛЬНАЯ ГЛУБИНА ПОГРУЖЕНИЯ

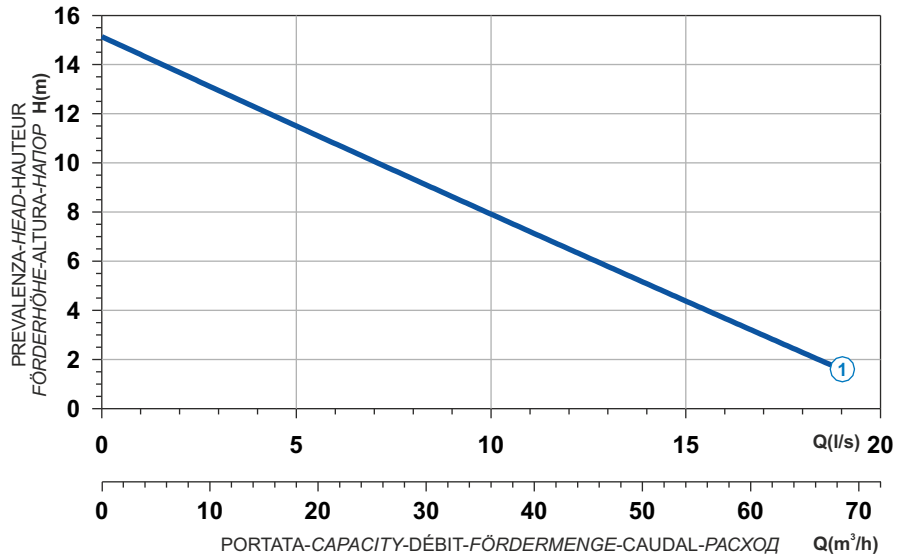




- Ghisa EN-GJL-250
- Fonte EN-GJL-250
- Hierro fundido EN-GJL-250

- Cast Iron EN-GJL-250
- Grauguss EN-GJL-250
- Чугун EN-GJL-250

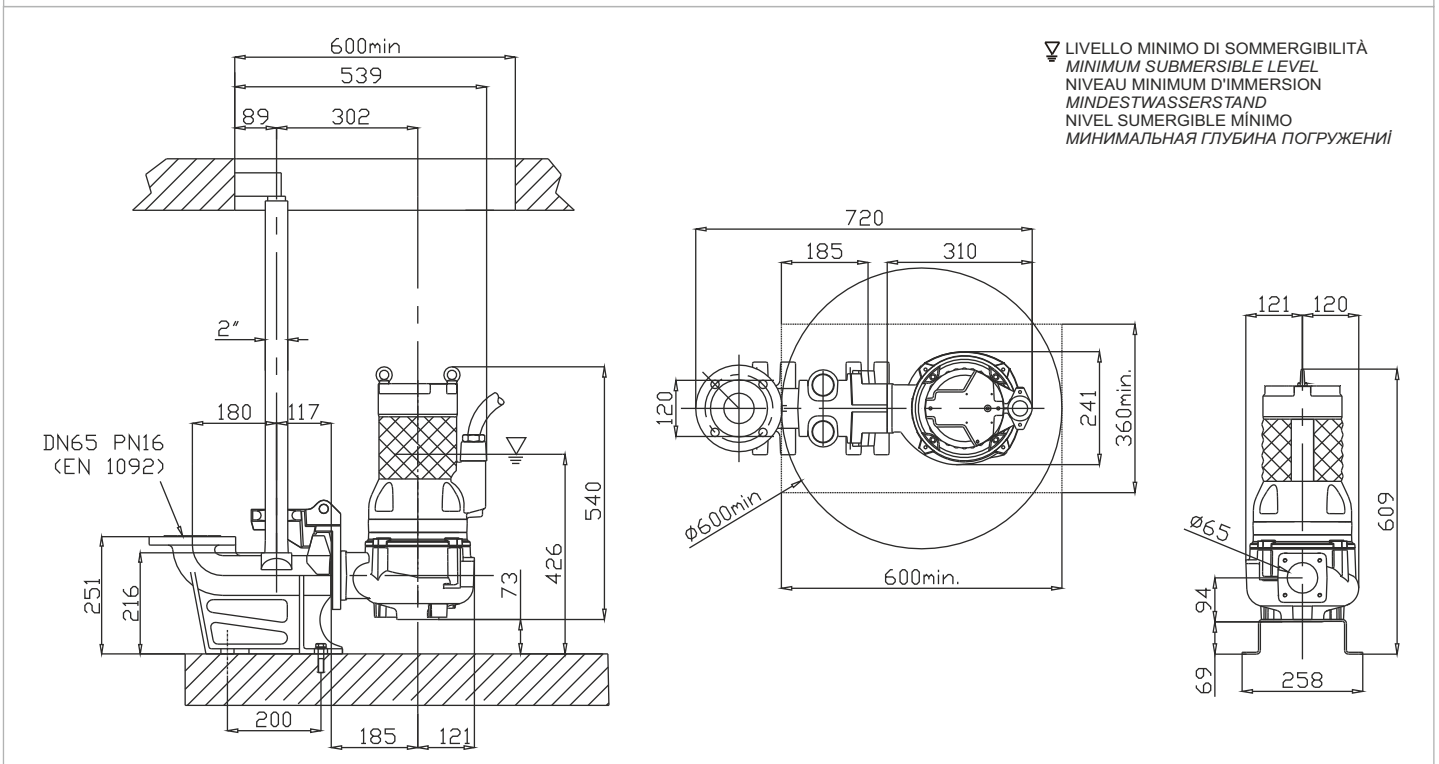
Curva caratteristica - Performance curve - Courbe caractéristique  
Kennlinie - Curva característica - Характеристическая кривая






Power supply	3ph 400/690V 50Hz
R.P.M.	2850
Free passage (mm)	65
Discharge (mm)	DN 65
Max Weight (Kg)	64

Curve N°	Code	Type	MOTOR			ATEX code
			Rated power P2 (kW)	Rated current I (A)	Starting current Is (A)	
1	7005698	G210R6V2-L65AA2	4,2	7,7	45,4	7000840

### Dimensioni - Dimensions - Dimensions - Abmessungen - Dimensiones - Габариты (mm)

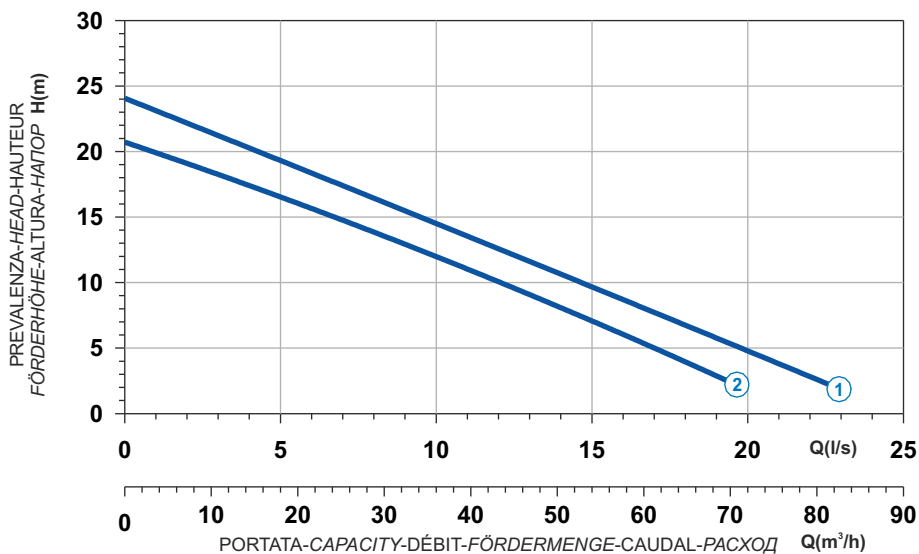



 Ghisa EN-GJL-250  
 Fonte EN-GJL-250  
 Hierro fundido EN-GJL-250

 Cast Iron EN-GJL-250  
 Grauguss EN-GJL-250  
 Чугун EN-GJL-250



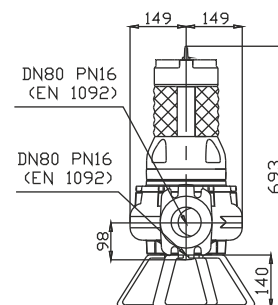
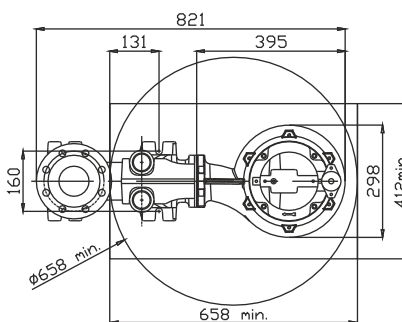
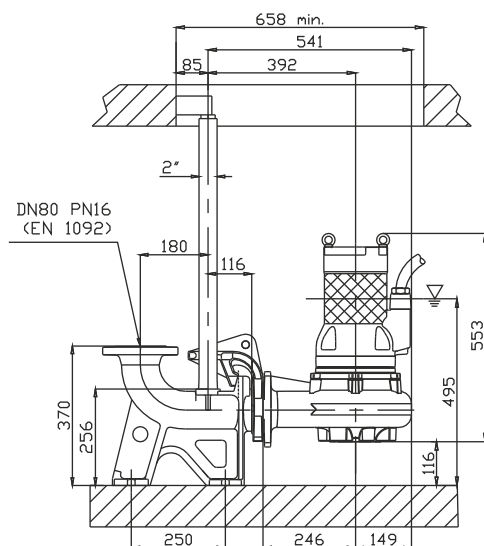
Curva caratteristica - Performance curve - Courbe caractéristique  
Kennlinie - Curva característica - Характеристическая кривая



Curve N°	Code	Type	MOTOR			ATEX code 
			Rated power P2 (kW)	Rated current I (A)	Starting current Is (A)	
1	7003212	G210R3V1-M50AA2	5,7	10,4	61,4	7002799
2	7003213	G210R3V2-M50AA2	5	9,1	53,7	7002800

Power supply	3ph 400/690V 50Hz
R.P.M.	2850
Free passage (mm)	50
Discharge (mm)	DN 80
Max Weight (Kg)	76

Dimensioni - Dimensions - Dimensions - Abmessungen - Dimensiones - Габариты (mm)



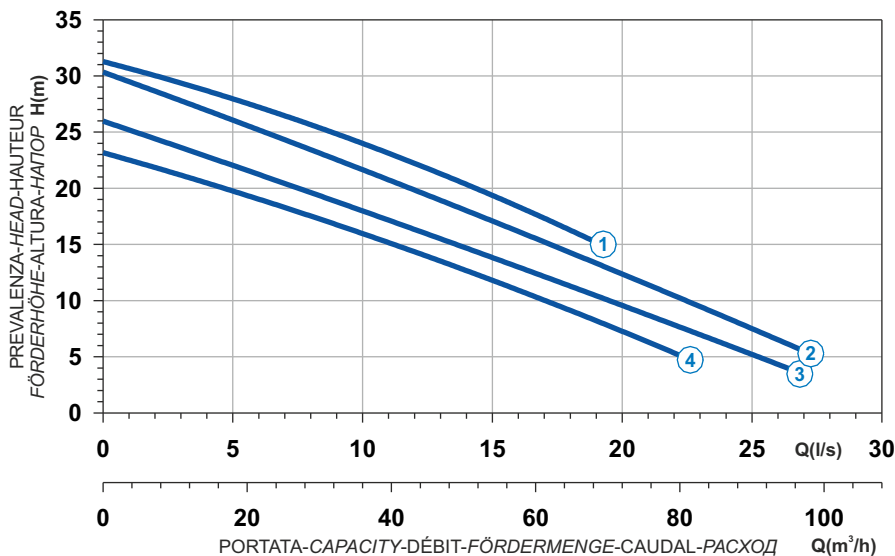
▽ LIVELLO MINIMO DI SOMMERSIBILITÀ  
 MINIMUM SUBMERSIBLE LEVEL  
 NIVEAU MINIMUM D'IMMERSION  
 MINDESTWASSERSTAND  
 NIVEL SUMERGIBLE MÍNIMO  
 МИНИМАЛЬНАЯ ГЛУБИНА ПОГРУЖЕНИЯ



Ghisa EN-GJL-250  
 Fonte EN-GJL-250  
 Hierro fundido EN-GJL-250

Cast Iron EN-GJL-250  
 Grauguss EN-GJL-250  
 Чугун EN-GJL-250

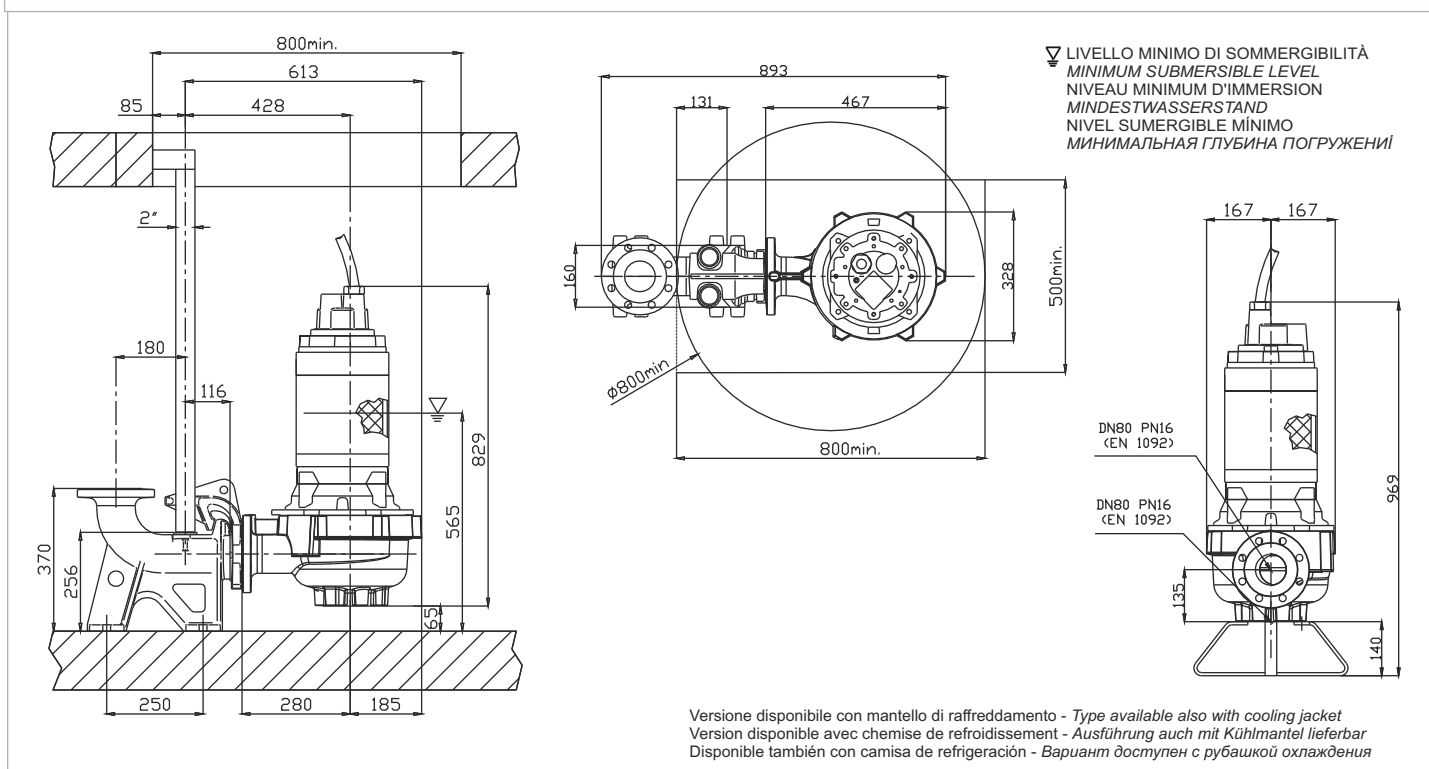
Curva caratteristica - Performance curve - Courbe caractéristique  
 Kennlinie - Curva característica - Характеристическая кривая






Power supply	3ph 400/690V 50Hz
R.P.M.	2850
Free passage (mm)	70
Discharge (mm)	DN 80
Max Weight (Kg)	165

Curve N°	Code	Type	MOTOR			ATEX code
			Rated power P2 (kW)	Rated current I (A)	Starting current Is (A)	
1	7001327	G211R3V8-M70SA2	10	18	106	7001394
2	7009668	G211R3V1-M70SA2	9	16,2	95,6	7000812
3	7003233	G211R3V2-M70SA2	8,2	14,7	86,7	7006120
4	7000741	G211R3V3-M70AA2	6,5	11,8	69,6	7001668

### Dimensioni - Dimensions - Dimensions - Abmessungen - Dimensiones - Габариты (mm)



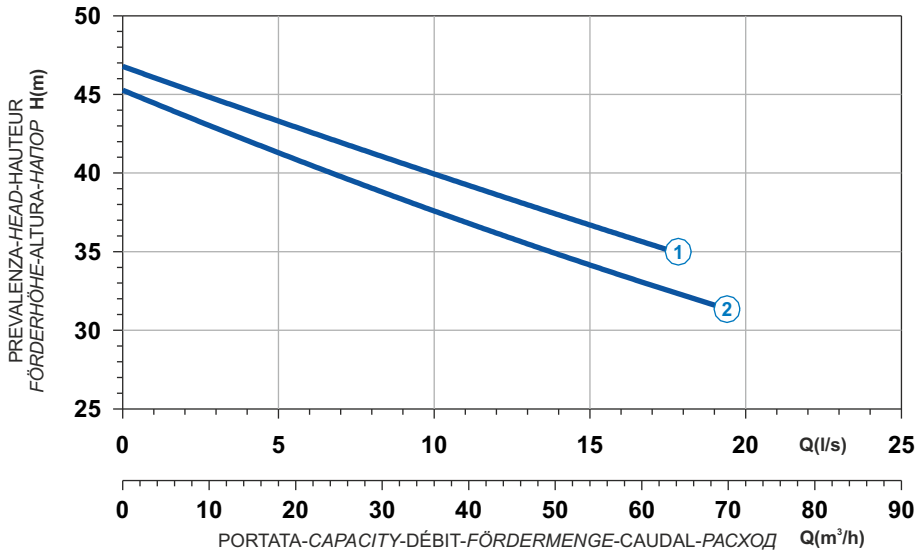



 Ghisa EN-GJL-250  
 Fonte EN-GJL-250  
 Hierro fundido EN-GJL-250

 Cast Iron EN-GJL-250  
 Grauguss EN-GJL-250  
 Чугун EN-GJL-250



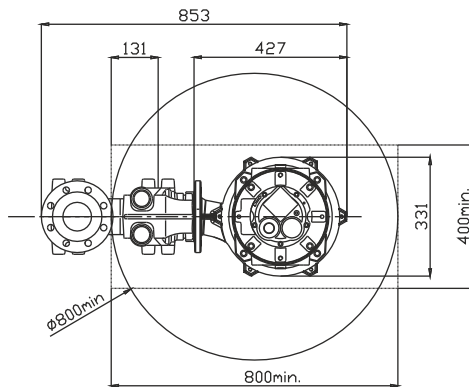
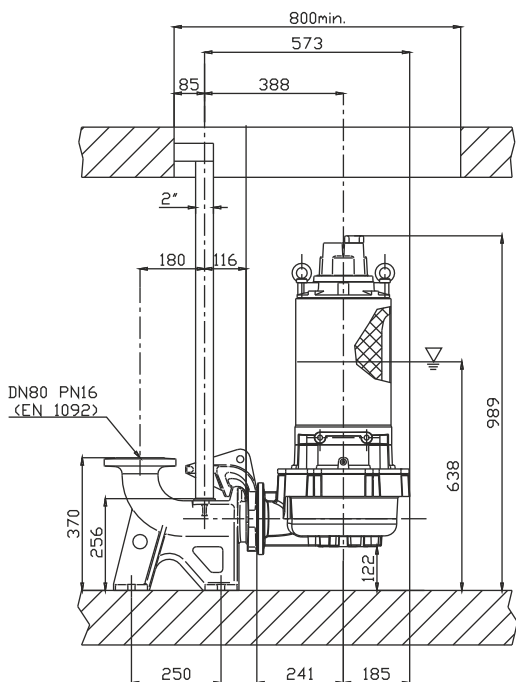
Curva caratteristica - Performance curve - Courbe caractéristique  
Kennlinie - Curva característica - Характеристическая кривая



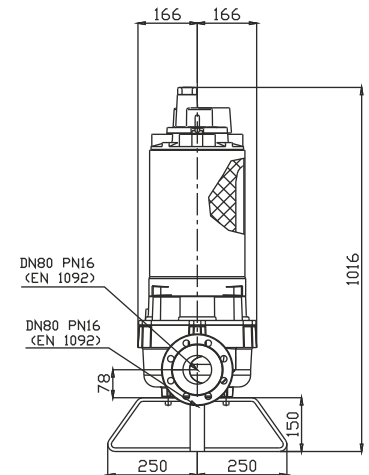
Curve N°	Code	Type	MOTOR			ATEX code 
			Rated power P2 (kW)	Rated current I (A)	Starting current Is (A)	
1	7006428	G213R6V1-M50AA2	18,2	32,6	192	7007469
2	7006429	G213R6V2-M50AA2	16,6	29,8	176	7007398

Power supply	3ph 400/690V 50Hz
R.P.M.	2850
Free passage (mm)	40x50
Discharge (mm)	DN 80
Weight (Kg)	196

## Dimensioni - Dimensions - Dimensions - Abmessungen - Dimensiones - Габариты (mm)









▽ LIVELLO MINIMO DI SOMMERGIBILITÀ  
 MINIMUM SUBMERSIBLE LEVEL  
 NIVEAU MINIMUM D'IMMERSION  
 MINDESTWASSERSTAND  
 NIVEL SUMERGIBLE MÍNIMO  
 МИНИМАЛЬНАЯ ГЛУБИНА ПОГРУЖЕНИЯ



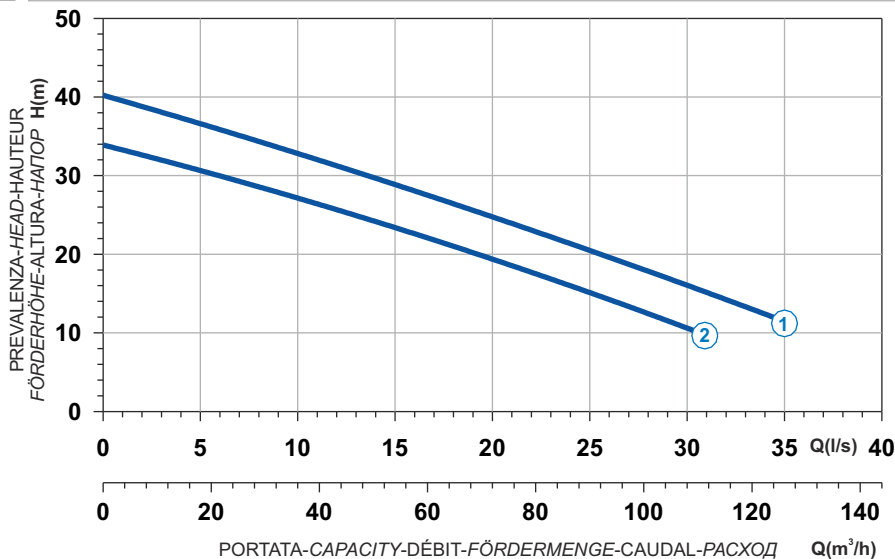
Versione disponibile con mantello di raffreddamento - Type available also with cooling jacket  
 Version disponible avec chemise de refroidissement - Ausführung auch mit Kühlmantel lieferbar  
 Disponible también con camisa de refrigeración - Вариант доступен с рубашкой охлаждения




 Ghisa EN-GJL-250  
 Fonte EN-GJL-250  
 Hierro fundido EN-GJL-250

 Cast Iron EN-GJL-250  
 Grauguss EN-GJL-250  
 Чугун EN-GJL-250

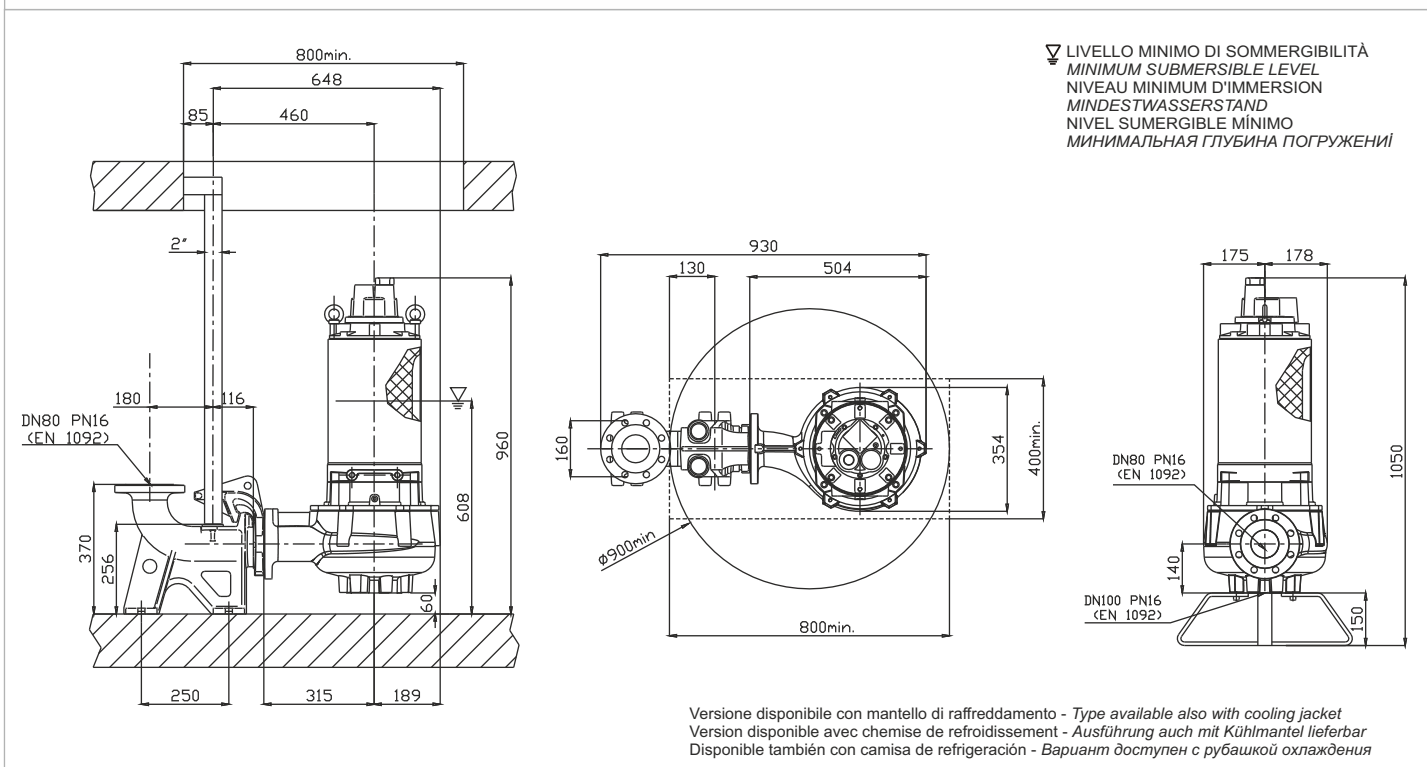
Curva caratteristica - Performance curve - Courbe caractéristique  
 Kennlinie - Curva característica - Характеристическая кривая









Power supply	3ph 400/690V 50Hz
R.P.M.	2850
Free passage (mm)	80
Discharge (mm)	DN 80
Max Weight (Kg)	193

Curve N°	Code	Type	MOTOR			ATEX code 
			Rated power P2 (kW)	Rated current I (A)	Starting current Is (A)	
1	7006110	G213R3V4-M80AA2	18,2	32,6	192	7007473
2	7006112	G213R3V5-M80AA2	14,9	26,8	158	7007472

## Dimensioni - Dimensions - Dimensions - Abmessungen - Dimensiones - Габариты (mm)

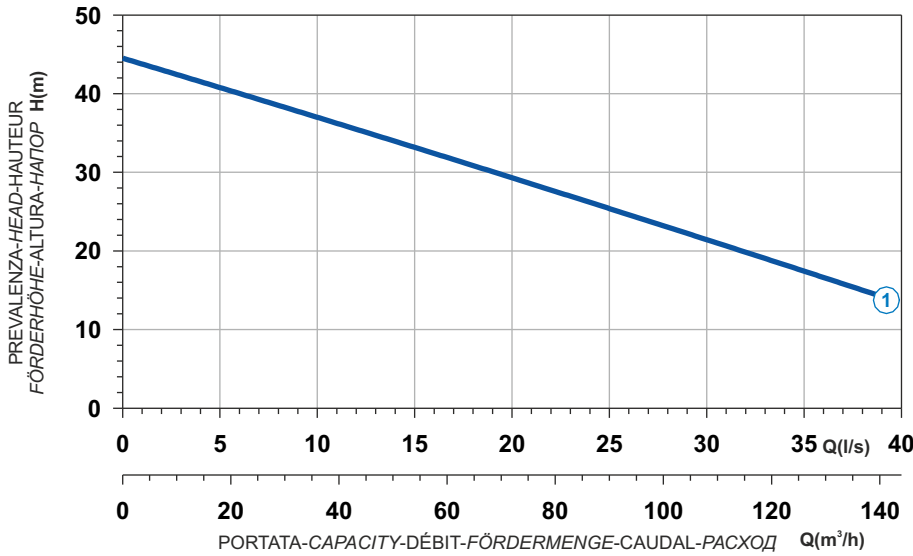



 Ghisa EN-GJL-250  
 Fonte EN-GJL-250  
 Hierro fundido EN-GJL-250

 Cast Iron EN-GJL-250  
 Grauguss EN-GJL-250  
 Чугун EN-GJL-250



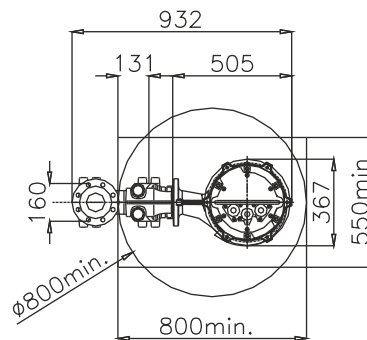
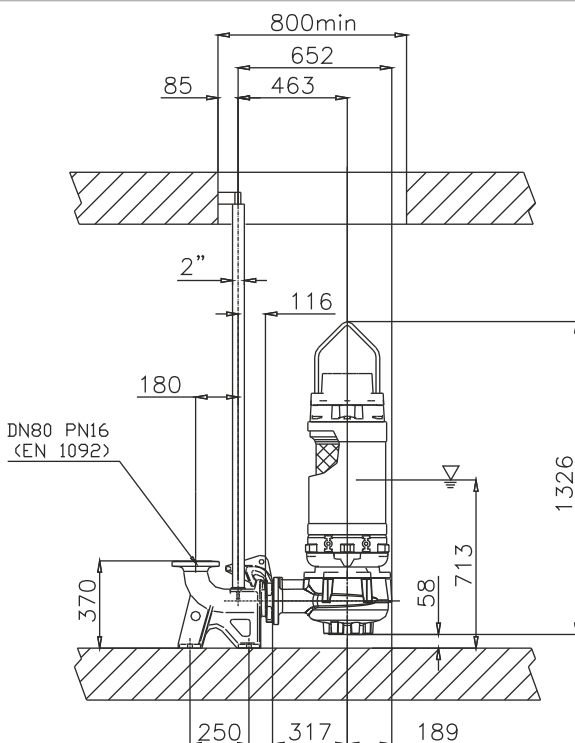
Curva caratteristica - Performance curve - Courbe caractéristique  
Kennlinie - Curva característica - Характеристическая кривая



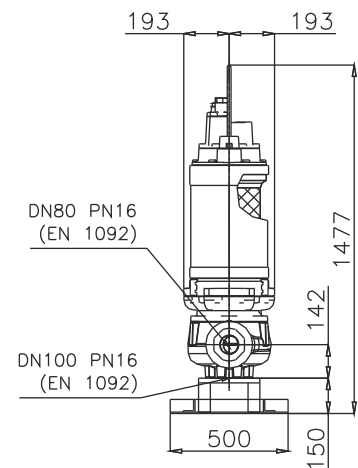
Curve N°	Code	Type	MOTOR			ATEX code 
			Rated power P2 (kW)	Rated current I (A)	Starting current Is (A)	
1	7006850	G216R3V1-M80AA2	22,4	38,9	230	7009136

Power supply	3ph 400/690V 50Hz
R.P.M.	2850
Free passage (mm)	80
Discharge (mm)	DN 80
Weight (Kg)	320

Dimensioni - Dimensions - Dimensions - Abmessungen - Dimensiones - Габариты (mm)



▽ LIVELLO MINIMO DI SOMMERGIBILITÀ  
 MINIMUM SUBMERSIBLE LEVEL  
 NIVEAU MINIMUM D'IMMERSION  
 MINDESTWASSERSTAND  
 NIVEL SUMERGIBLE MÍNIMO  
 МИНИМАЛЬНАЯ ГЛУБИНА ПОГРУЖЕНИЯ



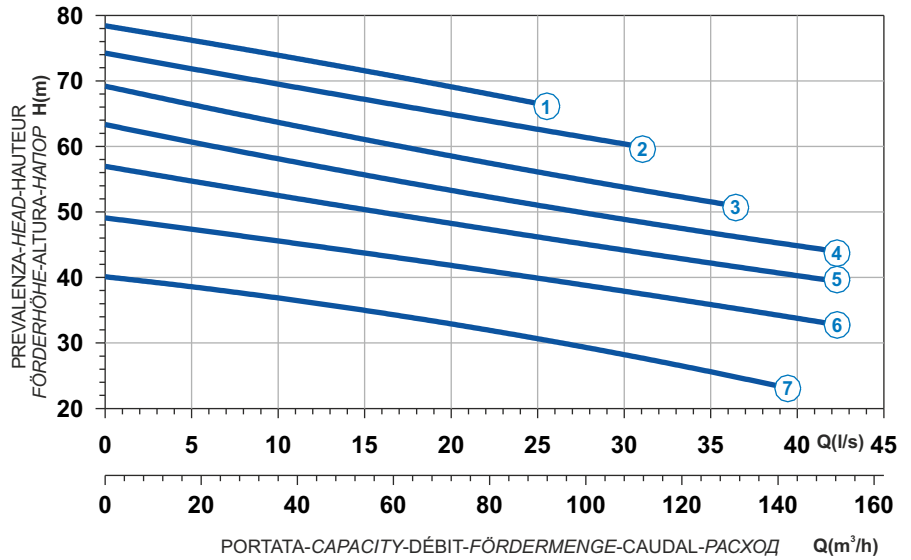
Versione disponibile con mantello di raffreddamento - Type available also with cooling jacket  
 Version disponible avec chemise de refroidissement - Ausführung auch mit Kühlmantel lieferbar  
 Disponible también con camisa de refrigeración - Вариант доступен с рубашкой охлаждения



Ghisa EN-GJL-250  
 Fonte EN-GJL-250  
 Hierro fundido EN-GJL-250

Cast Iron EN-GJL-250  
 Grauguss EN-GJL-250  
 Чугун EN-GJL-250

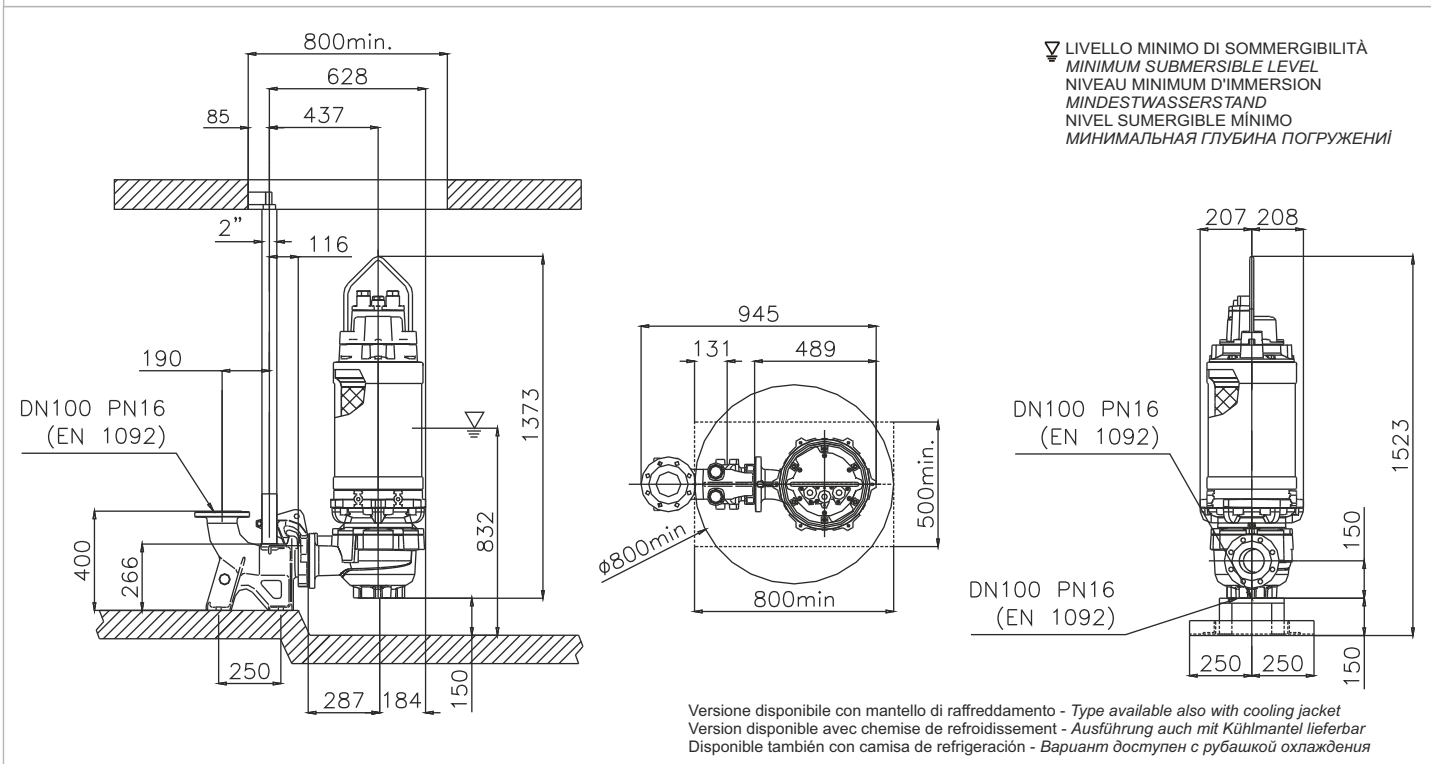
Curva caratteristica - Performance curve - Courbe caractéristique  
 Kennlinie - Curva característica - Характеристическая кривая



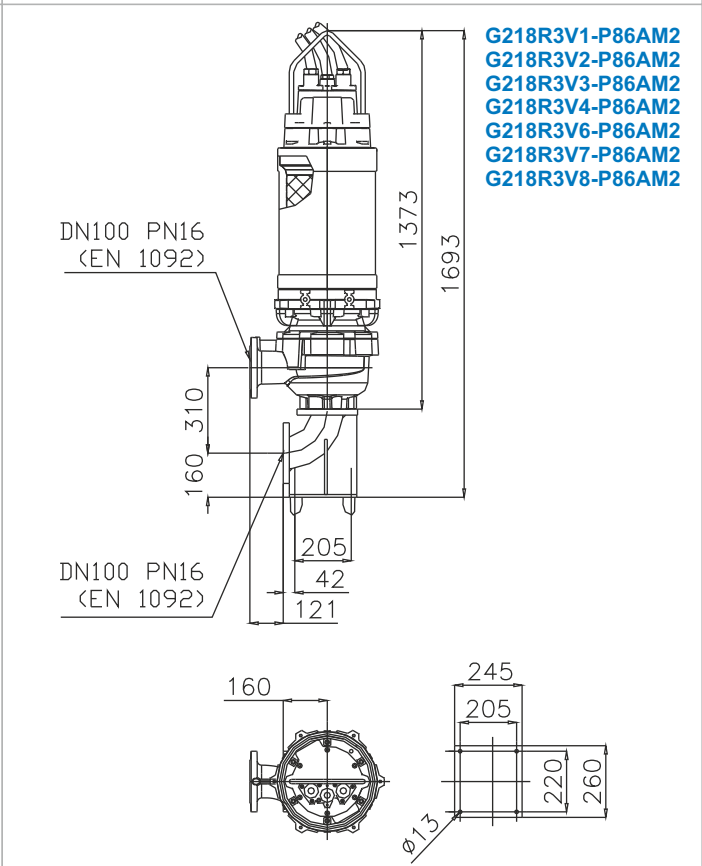
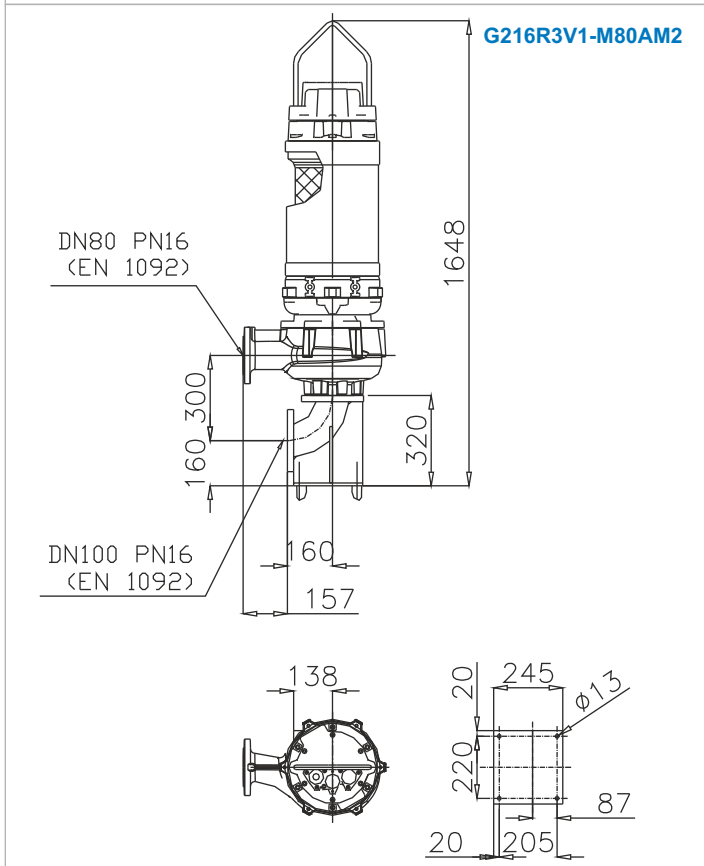
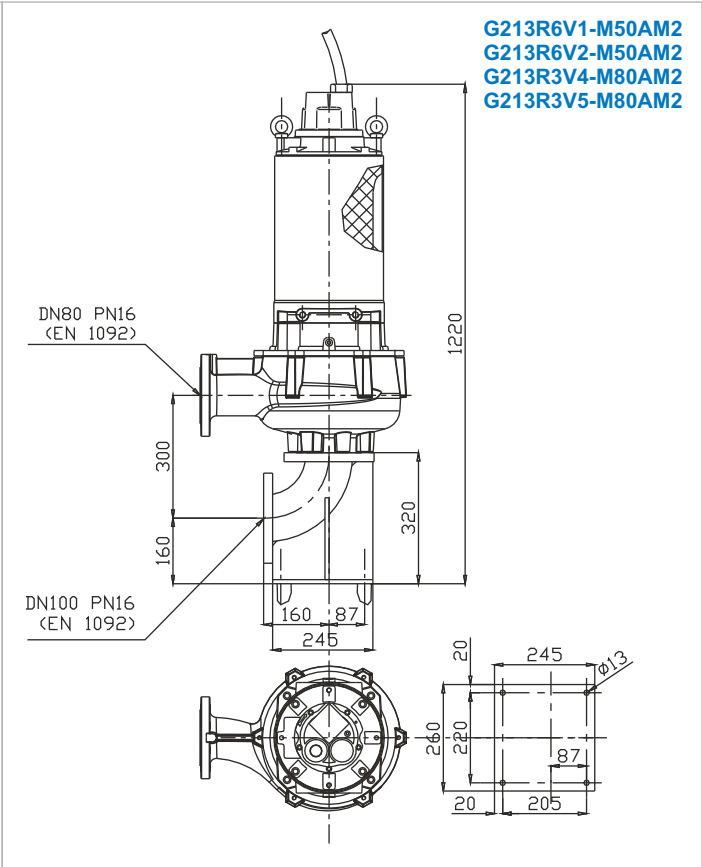
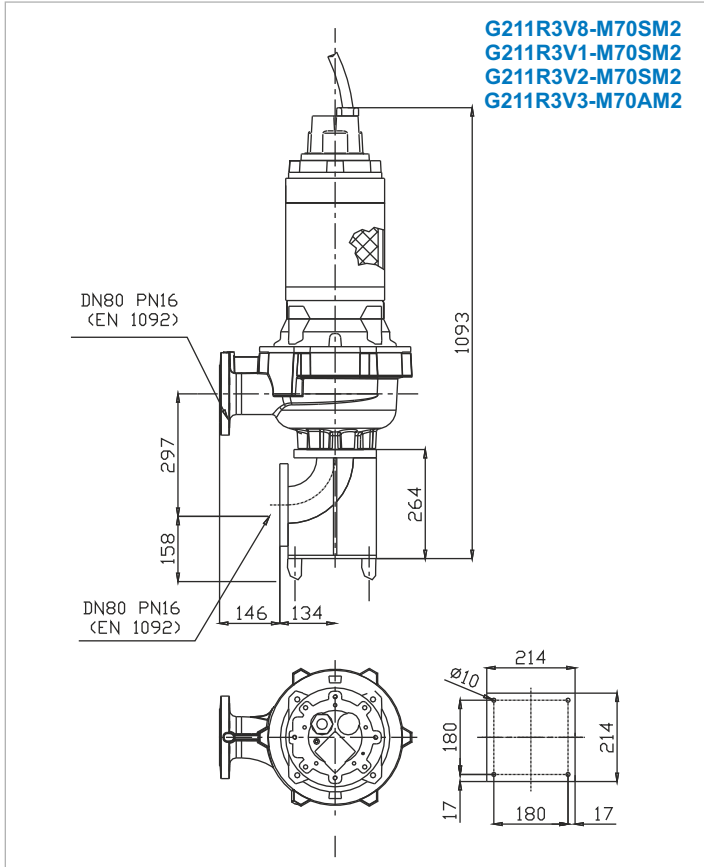
Power supply	3ph 400/690V 50Hz
R.P.M.	2850
Free passage (mm)	86
Discharge (mm)	DN 100
Max Weight (Kg)	410

Curve N°	Code	Type	MOTOR			ATEX code
			Rated power P2 (kW)	Rated current I (A)	Starting current Is (A)	
1	7001891	G218R3V1-P86AA2	52	90,1	532	7005975
2	7000926	G218R3V2-P86AA2	52	90,1	532	7005858
3	7001055	G218R3V4-P86AA2	52	90,1	532	7002936
4	7001011	G218R3V3-P86AA2	52	90,1	532	7001667
5	7001120	G218R3V6-P86AA2	45	78,3	462	7003348
6	7000941	G218R3V7-P86AA2	40,2	71	419	7004758
7	7000935	G218R3V8-P86AA2	35	61,8	365	7003299

Dimensioni - Dimensions - Dimensions - Abmessungen - Dimensiones - Габариты (mm)



**Installazione a secco**  
**Dry pit installation**  
**Installation fixe en chambre sèche**  
**Trockenaufstellung**  
**Instalación fija en cámara aislada**  
**Сухая установка**





- 1 **Alberi** rettificati nelle sedi dei cuscinetti e della tenuta, sovradimensionati rispetto ai parametri standard di utilizzo, equilibrati dinamicamente.
- 2 **Motore** Asincrono trifase a gabbia di scoiattolo, classe d'isolamento H(180°C). A secco, raffreddato dal liquido circostante. Grado di protezione IP68. Il motore, è progettato per lavoro continuo o intermittente, con un massimo squilibrio di tensione tra le fasi del 5%.
- 3 **Cuscinetti** sovradimensionati, radiali a sfere lubrificati a vita esenti da manutenzione.
- 4 **Camera olio** L'olio lubrifica e raffredda le tenute, ed emulsiona eventuali infiltrazioni di acqua.  
La pompa è dotata di due sistemi di tenuta per il perfetto isolamento tra il motore elettrico e il liquido pompato.  
Tenuta superiore: Ceramica/Grafite.
- 5 **Tenuta inferiore:** meccanica, carburo di silicio.
- 6 **Le giranti** sono progettate per garantire un elevato rendimento idraulico e bassi consumi energetici, hanno grandi passaggi dei vani interpalari e dei diffusori, minimo numero di pale, speciale profilazione dei bordi palari e della lingua taglia-acqua del diffusore, per evitare la cattura dei materiali filamentosi.



- 1 **Les arbres** rectifiés dans les sièges des roulements et de la garniture mécanique, surdimensionnés par rapport aux paramètres standard d'utilisation, équilibrés dynamiquement.
- 2 **Moteur** asynchrone triphasé à cage d'écureuil, classe d'isolation H(180°C). À sec, refroidi par le liquide environnant. Degré de protection IP68. Le moteur est dessiné pour le service continu ou intermittent, régulièrement espacés et avec
- 3 **Roulements** surdimensionnés, radiaux, à sphères lubrifiées à vie, exemptes d'entretien.
- 4 **Chambre huile** L'huile lubrifie et refroidit les garnitures mécaniques et émulsionne les infiltrations d'eau éventuelles. Deux garnitures mécaniques assurent la parfaite isolation entre le moteur électrique et le liquide pompé.  
Garniture supérieure: céramique/carbone.
- 5 **Garniture inférieure:** mécanique, carbure de silicium.
- 6 **Les roues** sont dessinées pour garantir un rendement hydraulique élevé et des basses consommations énergétiques, elles ont des grands passages libres, un nombre minimum de pales, un dessin spécial du profil des pales et de la langue taille-eaux, afin d'éviter d'encrasser la pompe par des filaments.



- 1 **Ejes** rectificado en la base de los cojinetes y base de la mecánica, sobredimensionado respecto a los parámetros estándar de uso y equilibrados dinámicamente.
- 2 **Motor** asincrónico trifásico con jaula, aislamiento H(180°C). En seco, enfriado por el líquido. Grado de protección IP68. El motor, esta preparado para trabajar continuamente o intermitentemente, con un máximo desequilibrio de tensión entre las fases del 5%.
- 3 **Cojinetes** sobredimensionados, radiales y esferas lubricados indefinidamente, sin necesidad de mantenimiento.
- 4 **Cámara de aceite** que lubrica y enfría los precintos y emulsiona las eventuales infiltraciones de agua.  
La bomba está dotada de dos sistemas de sellado para el perfecto aislamiento entre el motor eléctrico y el líquido bombeado.  
Sellado/precintado superior: mecánica, grafito/cerámica.
- 5 **Sellado/precintado inferior:** mecánica, carburo y silicio.
- 6 **Los impulsores** han sido proyectados para garantizar una alta eficacia hidráulica y un bajo absorbitamiento de energía, tienen grandes pasos libres entre las palas y en los difusores, numero mínimo de palas, perfil especial de los bordes de las palabras y del separador del flujo en el difusor, para evitar de coger los materiales filamentoso.



- 1 **Shafts** grided down in ball bearings and mechanical seals seats, over-dimensioned respect to standard parameters of use.
- 2 **Motor** asynchronous threephase squirrel cage type, insulation class H(180°C). Dry motor, cooled by surrounding liquid. Protection degree IP 68. The motor is projected for continuous or intermittent operation, with 5% maximum voltage unbalance between phases.
- 3 **Ball bearings** overdimensioned, life lubricated, maintenance free.
- 4 **Oil chamber** oil lubricates and cools the seals and emulsifies eventual water infiltrations.  
This electric pump has two types of seals for a perfect insulation between the electric motor and the pumped liquid.  
Upper seal: Ceramic/Graphite.
- 5 **Lower seal:** mechanical, silicon carbide.
- 6 **Impellers** are projected in order to guarantee and assure an high hydraulic efficiency and low power consumption, they have big inter-blades and diffuser free passages, minimum blades number, special blades design, especially diffusers' water-cutter blades designed to avoid filamentous materials catching



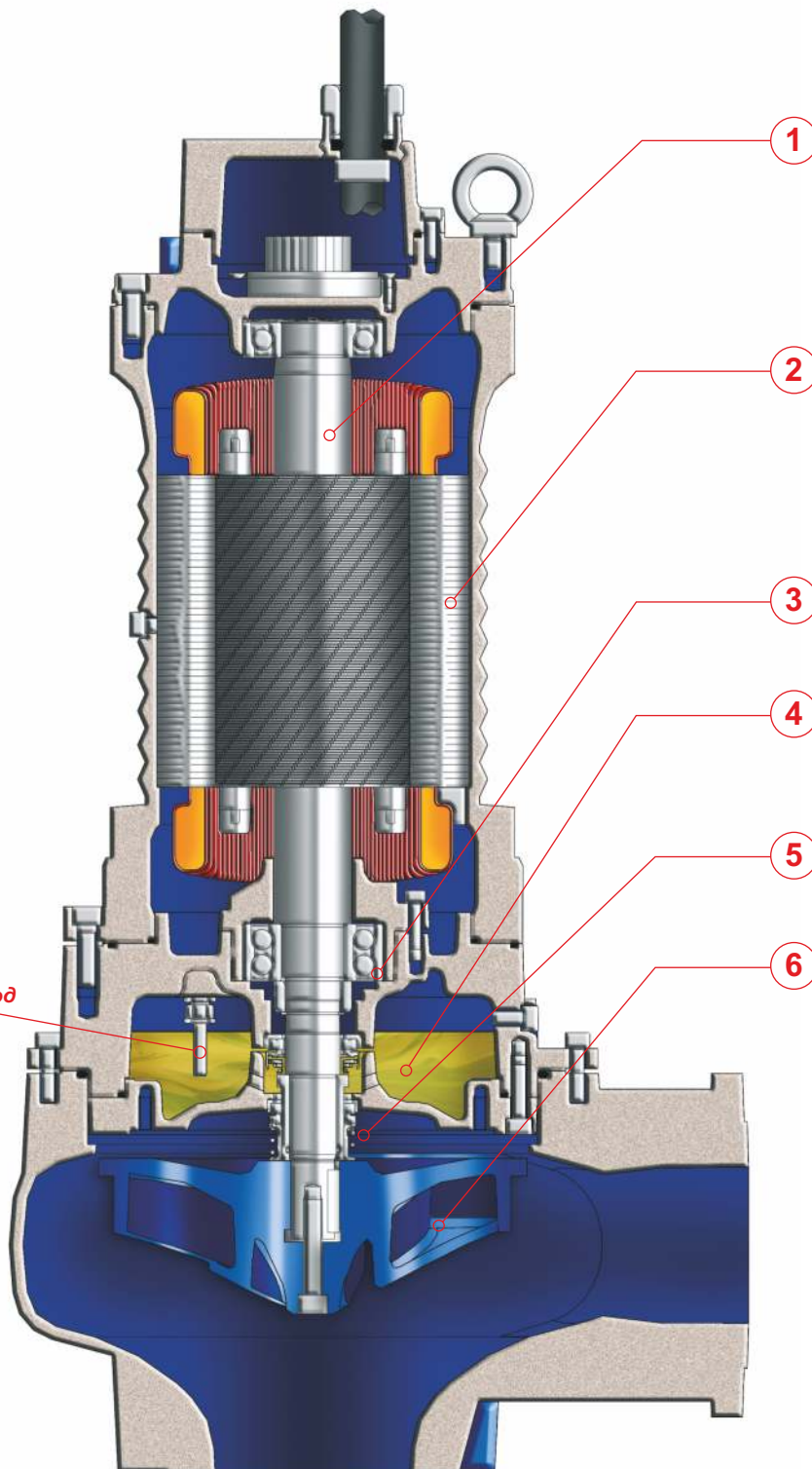
- 1 **Welle** Lagerung und Abdichtung durch überdimensionierte Wälzlager bzw. Dichtungsträger.
- 2 **Motor** Asynchroner Drehstrom-Käfigläufermotor, Isolationsklasse H (180°C). Trockener Motor, gekühlt durch Umgebungsflüssigkeit. Schutzart IP 68. Der Motor ist für kontinuierlichen oder intermittierenden Betrieb mit einer maximalen Spannungsunsymmetrie von 5 % zwischen den Phasen ausgelegt.
- 3 **Wälzlager** überdimensioniert, dauergeschmiert und wartungsfrei.
- 4 **Ölkammer** Öl schmiert und kühlt die Dichtungen und emulgiert bei evtl. Leckage.  
Doppeltwirkendes Dichtsystem garantiert optimale Abdichtung zwischen Motor und Fördermedium  
Obere Dichtung: Gleitringdichtung Kohle / Keramik.
- 5 **Untere Dichtung:** Gleitringdichtung Siliziumkarbid.
- 6 **Laufring** konstruiert für max. hydraulischen Wirkungsgrad und geringer Leistungsaufnahme. Große Zwischenräume und tottraumfreie Passagen, spezielle Schaufelformen und Diffusorkanäle sorgen für eine verstopfungsfreie Förderung.



- 1 **Валы**, отшлифованные в местах посадки подшипников и уплотнения, рассчитанные с запасом относительно стандартных рабочих параметров, динамически отбалансированы.
- 2 **Трехфазный** Двигатель асинхронный трехфазный с короткозамкнутым ротором, класс изоляции H(180°C). Сухой двигатель, охлаждаемый окружающей жидкостью. Степень защиты IP 68. Двигатель рассчитан на непрерывную или повторно-кратковременную работу с асимметрией напряжения между фазами не более 5%.
- 3 **Подшипники** рассчитаны с запасом, радиального типа с шариками со смазкой на весь срок службы, не требующие тех. обслуживания.
- 4 **Масляная** камера служит для смазки и охлаждения прокладок, а также для эмульгирования просочившейся воды. Насос снабжен двумя системами герметизации для обеспечения идеальной изоляции между электродвигателем и перекачиваемой жидкостью. Верхнее уплотнение: уплотнительное кольцо из NBR.
- 5 **Нижнее уплотнение:** механическое, карбид кремния.
- 6 **Рабочие** колеса спроектированы для обеспечения высокого гидравлического КПД и низкого энергопотребления. Они имеют большие проходы в зонах между лопастями и диффузорах, минимальное количество лопастей, специальный профиль кромок лопастей и язычок для разреза воды на диффузоре во избежание удержания волокнистых материалов.

# VORTEX

Elettropompe sommergibili vortice 6 pale 4/6 poli  
 Submersible electric pumps vortex 6 blades 4/6 poles  
 Electropompe submersible vortex 6 aubes 4/6 pôles  
 Tauchmotorpumpe mit Freistromlaufrad 6 Schaufeln, 4/6-polig  
 Bombas sumergibles vortex 6 alabes 4/6 polos  
 Погружные электронасосы Вихревые с 6 лопастями 4/6 полюсами



Sonda - Probe  
 Sonde - Fühler  
 Sonda - электрод



**IMPIEGHI**

Le elettropompe sommergibili vortice sono utilizzate prevalentemente per il pompaggio di acque cariche e luride anche con corpi solidi e filamentosi in sospensione. In particolare per lo svuotamento di pozzi di raccolta liquami da fosse biologiche e pozzi di raccolta acque usate in genere, acque sporche non grigliate.

**PARTICOLARITÀ COSTRUTTIVE**

Elettropompe sommergibili di robusta e compatta costruzione, motori elettrici alloggiati in vano a tenuta stagna, collegati mediante alberi di lunghezze ridotte alle giranti situate in voluta tramite interposizione di camera olio tra parte idraulica e motore elettrico.

**MATERIALI**

Fusioni principali	Ghisa EN-GJL-250
Girante	Ghisa EN-GJL-250
Cavo elettrico	Neoprene H07RN/F
Albero	Acciaio inossidabile AISI 431 / Duplex
O-rings e paraolio	Nitrile
Bullonerie	Classe A4 - AISI316
Tenuta meccanica	Carburo di silicio / Carburo di silicio



**APPLICATIONS**

Les pompes submersibles vortex sont utilisées principalement pour le pompage d'eaux chargées et d'eaux usées pouvant contenir des corps en suspensions. En particulier pour la vidange de puits de collecte d'eaux noires, d'eaux usées en générales et eaux sales non grillées.

**PARTICULARITÉ DE CONSTRUCTION**

Pompes submersibles robustes et compactes, moteurs électriques logés en enceinte étanche, reliés par des arbres de longueurs réduites aux roues, avec interposition d'une chambre à huile entre la partie hydraulique et le moteur électrique.

**MATÉRIAUX**

Moulures principales	Fonte EN-GJL-250
Roue	Fonte EN-GJL-250
Câble électrique	Néoprène H07RN/F
Arbre	Acier inoxydable AISI 431 / Duplex
O-ring et joints	Nitrile
vis	Classe A4 - AISI316
Garniture mécanique	Carb. de silicium / carbure de silicium



**UTILIZACION**

Las bombas sumergibles vortex se utilizan principalmente para bombear aguas muy sucias o con filamentos en suspensión. Particularmente para vaciar pozos de líquidos varios, de fosas biológicas y pozos de recogida de aguas usadas, i en general aguas no filtradas.

**DIFERENCIAS PRINCIPALES**

Son bombas sumergibles de robusta y compacta construcción, motores eléctricos situados en compartimento separado, conectadas mediante ejes cortos con los impulsores interpuestos con una cámara de aceite entre la parte hidráulica i el motor eléctrico.

**MATERIALES**

Aleaciones principales	Hierro Fundido EN-GJL-250
Impulsor (turbina)	Hierro Fundido EN-GJL-250
Cable eléctrico	Neopreno H07RN/F
Eje	Acero inoxidable AISI 431 / Duplex
Anillo de sellados y O-Rings	Nitrilo
Tornillos	Clase A4 - AISI316
Sello mecánico	Carburo de silicio / Carburo de silicio



**APPLICATION**

Submersible electric vortex pumps are used predominantly for pumping sewage water and suspended solid bodies. In particular for emptying septic tanks and for other civil or industrial applications.

**CONSTRUCTION DATA**

Submersible electric pumps, robust in construction, watertight electric motors accommodated in compartment, connected, by shafts of reduced lengths, to the impellers situated at the pump casing by the interposition of oil chamber between the hydraulic side and the electric motor.

**MATERIALS**

Motor housing	Cast iron EN-GJL-250
Impeller Spheroidal	Cast-iron EN-GJL-250
Electric cable	Neoprene H07RN/F
Shaft	Stainless Steel AISI 431 / Duplex
O-rings and lip seal	Nitrile
Bolts	A4 - AISI316 class
Mechanical seal	Silicon Carbide / Silicon Carbide



**EINSATZBEREICHE**

Tauchmotorpumpen mit Freistromlaufrad werden vorwiegend zur Förderung von Abwasser mit Schwebstoffen eingesetzt. Speziell zur Entleerung von Fäkalientanks geeignet, für häusliche und industrielle Abwässer.

**AUSFÜHRUNG**

Robuste Tauchmotorpumpe mit wasserdichtem Motor, kompakte Bauart, Laufrad im Pumpengehäuse durch Ölkammer zum Motor getrennt.

**WERKSTOFFE**

Motorgehäuse	Grauguss EN-GJL-250
Laufrad	Grauguss EN-GJL-250
Anschlusskabel	Neoprene H07RN/F
Welle	Edelstahl AISI 431 / Duplex
Wellendichtring und O-Ringe	Nitril
Schrauben	Edelstahl A4 - AISI316
Gleitringdichtung	Siliziumkarbid / Siliziumkarbid



**ОБЛАСТЬ ПРИМЕНЕНИЯ**

Вихревые погружные электронасосы используются, в основном, для перекачки средне- и сильнозагрязненной воды, в т. ч. с содержанием твердых взвешенных частиц и/или волокнистых материалов. В частности, для опорожнения канализационных ям и накопительных емкостей, для перекачки нефилтрованных сточных жидкостей.

**КОНСТРУКЦИОННЫЕ ОСОБЕННОСТИ**

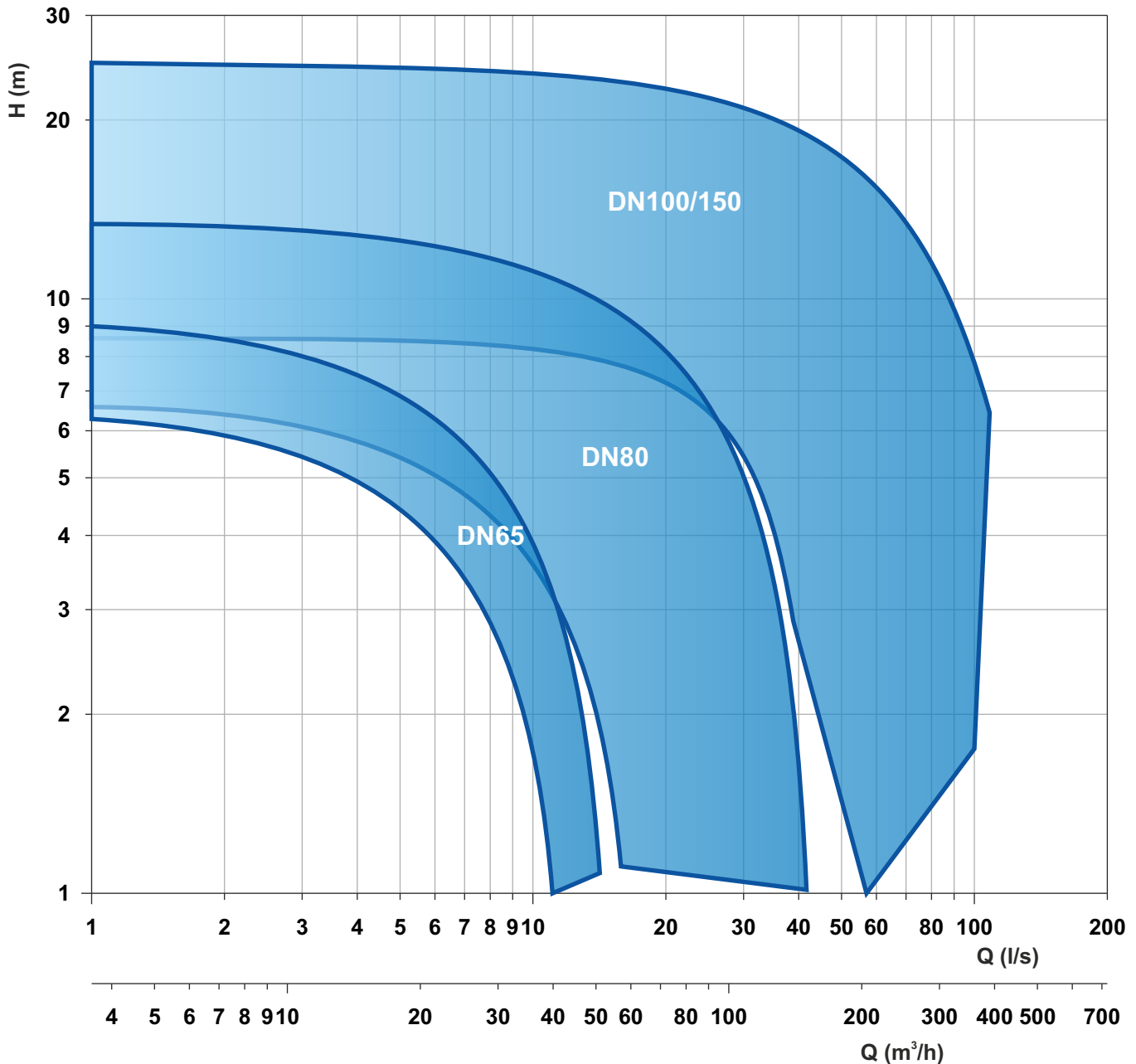
Погружные электронасосы с прочной и компактной конструкцией. Электродвигатели размещены в секции с герметичным уплотнением и соединены через валы небольшой длины с рабочими колесами, расположенными в гидравлической камере. Валы проходят через масляную камеру между гидравликой и электродвигателем.

**МАТЕРИАЛЫ**

Основные литые компоненты	Чугун EN-GJL-250
Рабочее колесо	Чугун EN-GJL-250
Электрокабель	Неопрен H07RN/F
Вал	Нержавеющая сталь AISI431/Дуплекс
Уплот. кольца и манжета	Нитрил
Винты	Класс A4 - AISI316
Мех. уплотнение	Карбид кремния/Карбид кремния.



Elettropompe sommergibili vortice 6 pale 4/6 poli  
 Submersible electric pumps vortex 6 blades 4/6 poles  
 Electropompe submersible vortex 6 aubes 4/6 pôles  
 Tauchmotorpumpe mit Freistromlaufrad 6 Schaufeln, 4/6-polig  
 Bombas sumergibles vortex 6 alabes 4/6 polos  
 Погружные электронасосы Вихревые с 6 лопастями 4/6 полюсами



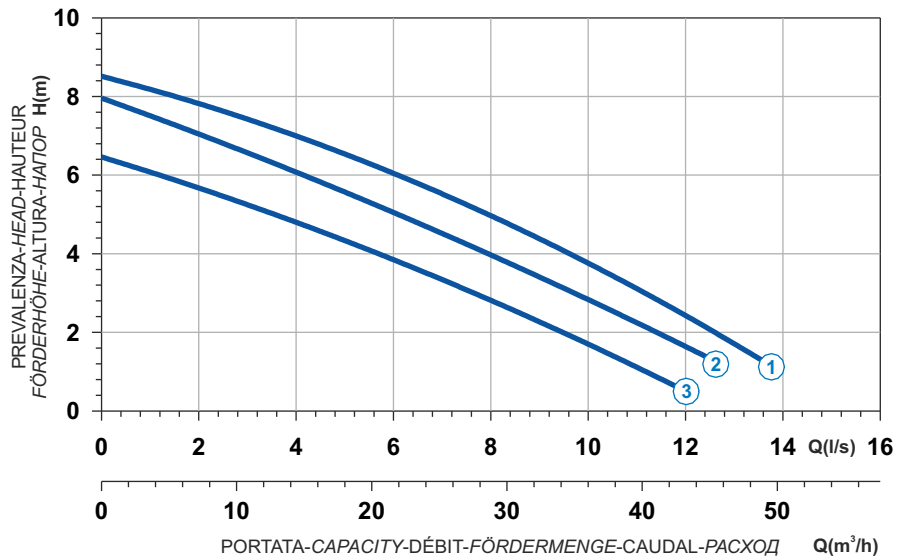
Le schede tecniche sono disponibili al sito [www.faggiolatipumps.com](http://www.faggiolatipumps.com)  
 Technical data sheets are available on our web site [www.faggiolatipumps.com](http://www.faggiolatipumps.com)  
 Les fiches techniques sont disponibles sur notre site web [www.faggiolatipumps.com](http://www.faggiolatipumps.com)  
 Technische Datenblätter finden Sie auf unserer Internetseite [www.faggiolatipumps.com](http://www.faggiolatipumps.com)  
 Las hojas de datos técnicas están disponibles en nuestro web site [www.faggiolatipumps.com](http://www.faggiolatipumps.com)  
 Технические спецификации доступны на веб-сайте [www.faggiolatipumps.com](http://www.faggiolatipumps.com)



- Ghisa EN-GJL-250
- Fonte EN-GJL-250
- Hierro fundido EN-GJL-250

- Cast Iron EN-GJL-250
- Grauguss EN-GJL-250
- Чугун EN-GJL-250

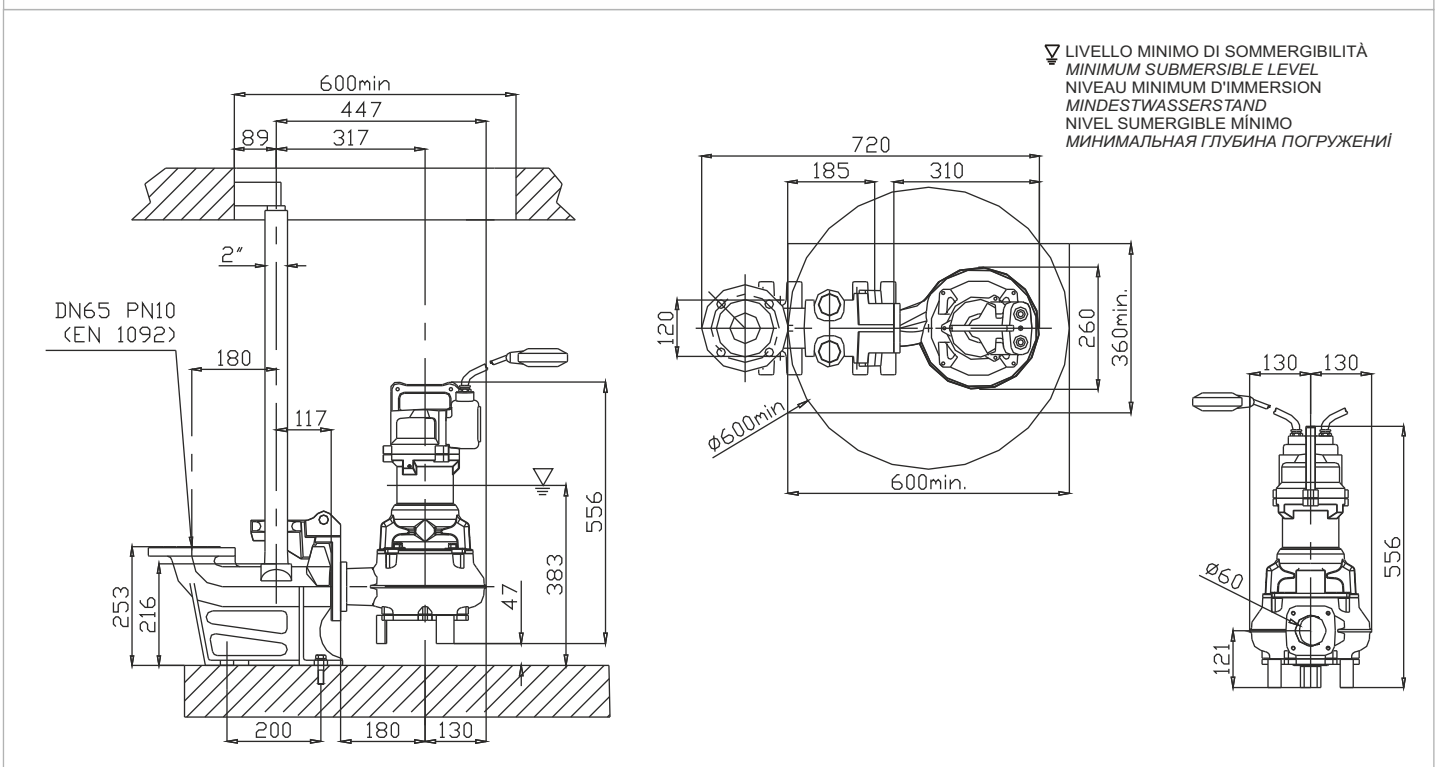
Curva caratteristica - Performance curve - Courbe caractéristique  
Kennlinie - Curva característica - Характеристическая кривая






Power supply	1ph 230V 50Hz
R.P.M.	1450
Free passage (mm)	50
Discharge (mm)	DN 65
Max Weight (Kg)	43

Curve N°	Code	Type	MOTOR			ATEX code
			Rated power P2 (kW)	Rated current I (A)	Starting current Is (A)	
1	7002285	G471M6V1-L50AB1	1,6	9,2	46	7002822
2	7002286	G471M6V2-L50AB1	1,4	8,1	40,5	7002823
3	7002287	G471M6V3-L50AB1	1,2	6,9	34,5	7002824

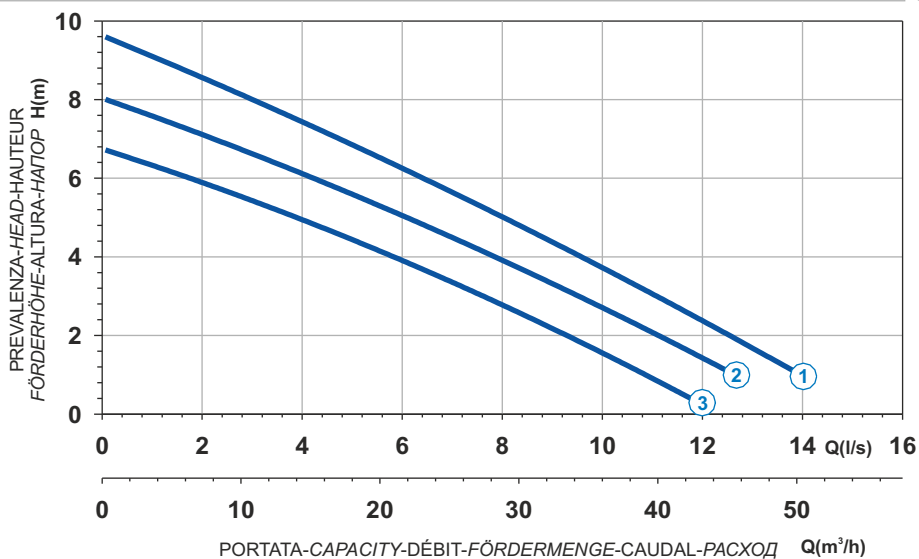
### Dimensioni - Dimensions - Dimensions - Abmessungen - Dimensiones - Габариты (mm)




 Ghisa EN-GJL-250  
 Fonte EN-GJL-250  
 Hierro fundido EN-GJL-250

 Cast Iron EN-GJL-250  
 Grauguss EN-GJL-250  
 Чугун EN-GJL-250

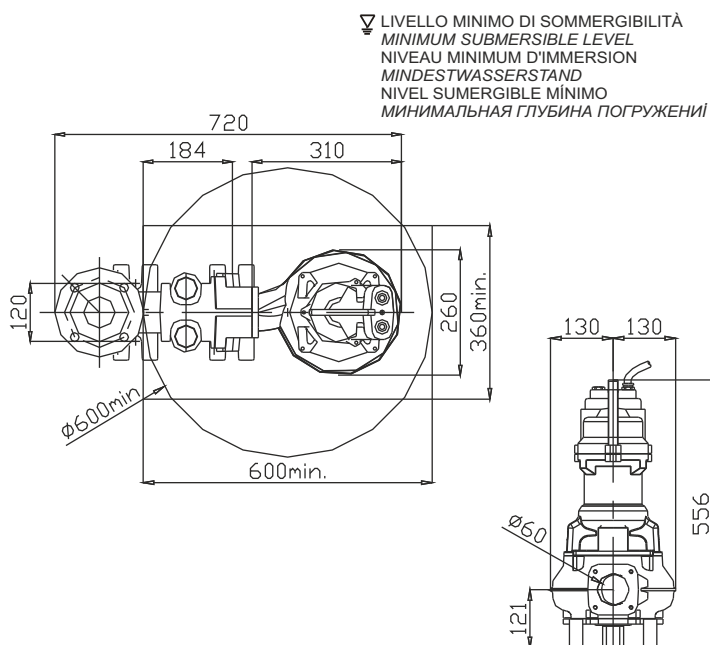
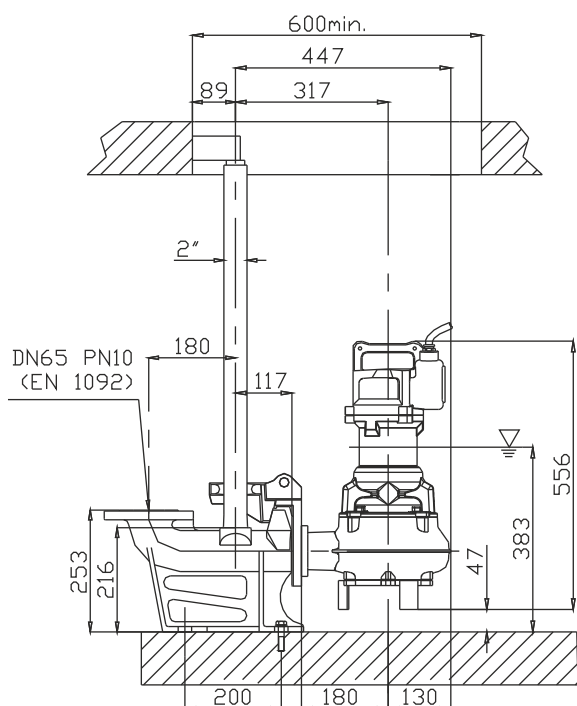
**Curva caratteristica - Performance curve - Courbe caractéristique  
 Kennlinie - Curva característica - Характеристическая кривая**



Curve N°	Code	Type	MOTOR			ATEX code 
			Rated power P2 (kW)	Rated current I (A)	Starting current Is (A)	
1	7002047	G471T6V1-L50AA0	1,6	3,1	14	7002702
2	7002048	G471T6V2-L50AA0	1,6	3,1	14	7003843
3	7002049	G471T6V3-L50AA0	1,1	2,4	10,8	7002811

Power supply	3ph 400V 50Hz
R.P.M.	1450
Free passage (mm)	50
Discharge (mm)	DN 65
Max Weight (Kg)	42

**Dimensioni - Dimensions - Dimensions - Abmessungen - Dimensiones - Габариты (mm)**



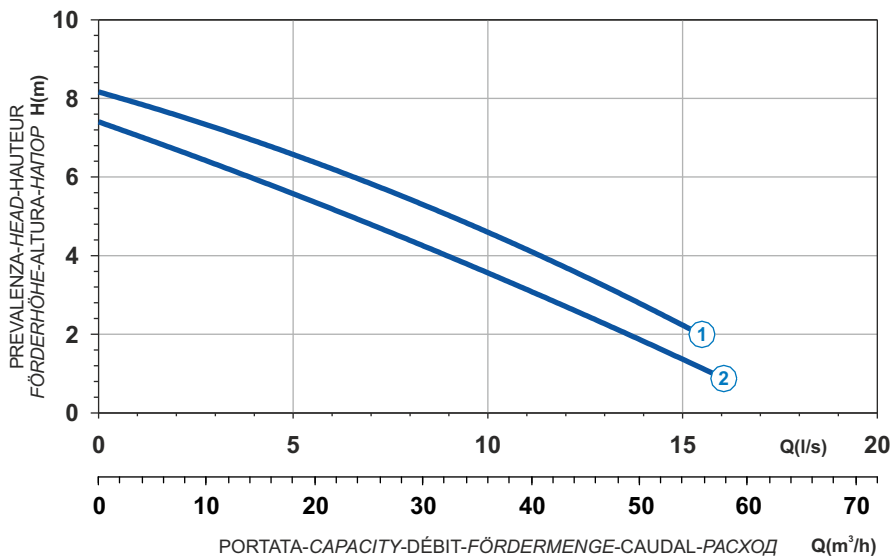
▽ LIVELLO MINIMO DI SOMMERGIBILITÀ  
 MINIMUM SUBMERSIBLE LEVEL  
 NIVEAU MINIMUM D'IMMERSION  
 MINDESTWASSERSTAND  
 NIVEL SUMERGIBLE MÍNIMO  
 МИНИМАЛЬНАЯ ГЛУБИНА ПОГРУЖЕНИЯ



- Ghisa EN-GJL-250
- Fonte EN-GJL-250
- Hierro fundido EN-GJL-250

- Cast Iron EN-GJL-250
- Grauguss EN-GJL-250
- Чугун EN-GJL-250

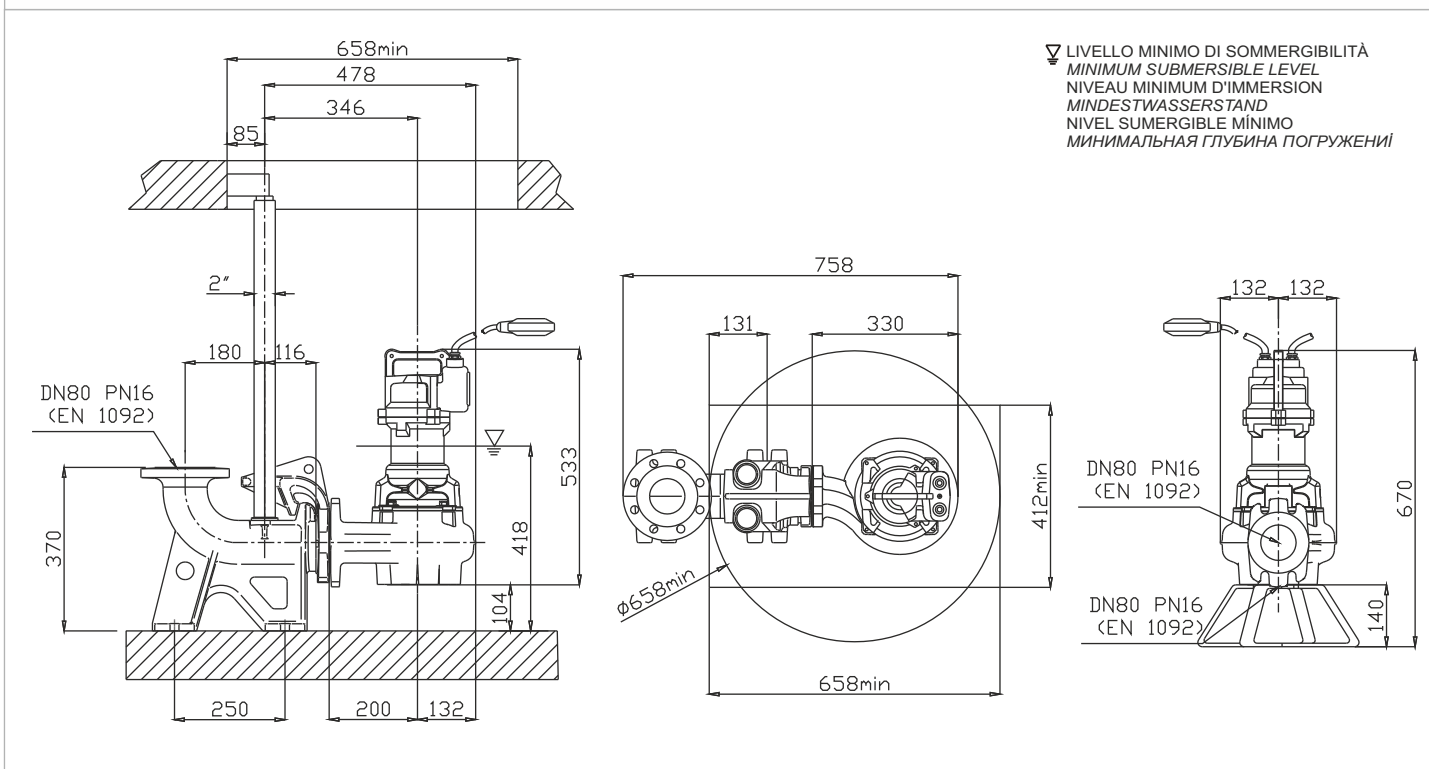
Curva caratteristica - Performance curve - Courbe caractéristique  
Kennlinie - Curva característica - Характеристическая кривая






Power supply	1ph 230V 50Hz
R.P.M.	1450
Free passage (mm)	50
Discharge (mm)	DN 80
Max Weight (Kg)	46

Curve N°	Code	Type	MOTOR			ATEX code
			Rated power P2 (kW)	Rated current I (A)	Starting current Is (A)	
1	7005430	G471M6V1-M50AB1	1,6	9,2	46	7005821
2	7005431	G471M6V2-M50AB1	1,4	8,1	40,5	7005682

Dimensioni - Dimensions - Dimensions - Abmessungen - Dimensiones - Габариты (mm)

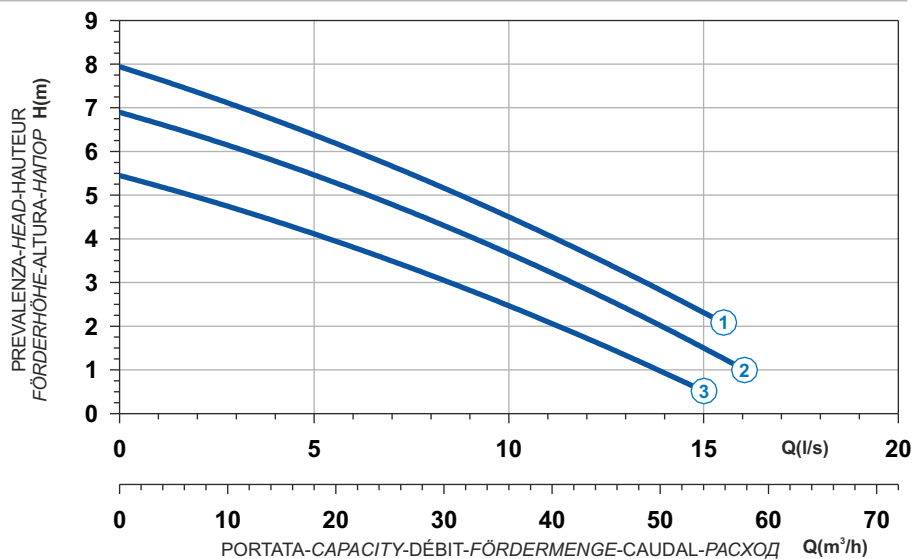



 Ghisa EN-GJL-250  
 Fonte EN-GJL-250  
 Hierro fundido EN-GJL-250

 Cast Iron EN-GJL-250  
 Grauguss EN-GJL-250  
 Чугун EN-GJL-250



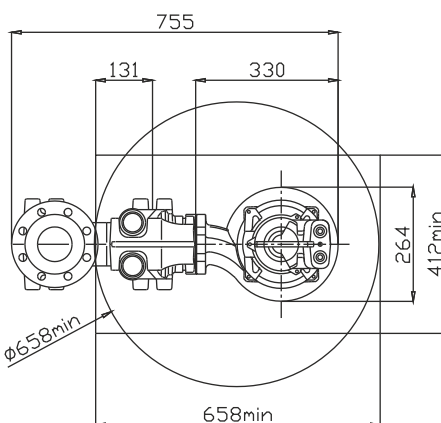
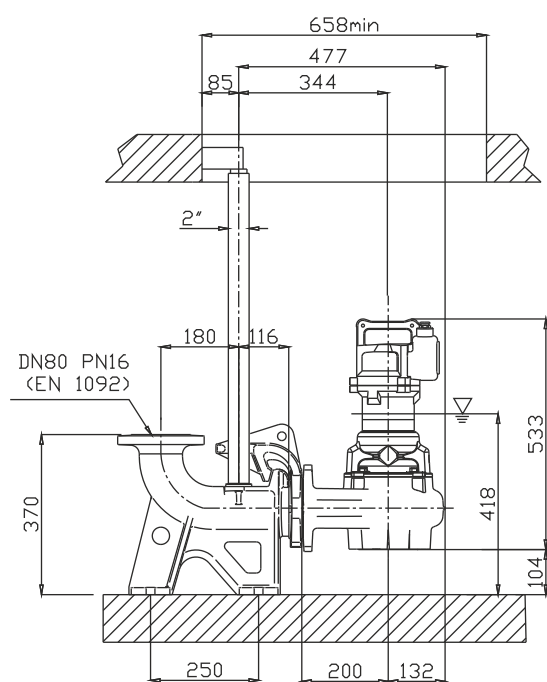
Curva caratteristica - Performance curve - Courbe caractéristique  
Kennlinie - Curva característica - Характеристическая кривая



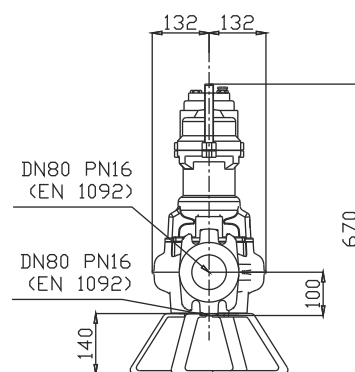
Curve N°	Code	Type	MOTOR			ATEX code 
			Rated power P2 (kW)	Rated current I (A)	Starting current Is (A)	
1	7005289	G471T6V1-M50AA0	1,6	3,1	14	7005836
2	7005429	G471T6V2-M50AA0	1,4	2,7	12,2	7005648
3	7005396	G471T6V3-M50AA0	1,1	2,4	10,8	7001869

Power supply	3ph 400V 50Hz
R.P.M.	1450
Free passage (mm)	50
Discharge (mm)	DN 80
Max Weight (Kg)	45

Dimensioni - Dimensions - Dimensions - Abmessungen - Dimensiones - Габариты (mm)



▽ LIVELLO MINIMO DI SOMMERGIBILITÀ  
 MINIMUM SUBMERSIBLE LEVEL  
 NIVEAU MINIMUM D'IMMERSION  
 MINDESTWASSERSTAND  
 NIVEL SUMERGIBLE MÍNIMO  
 МИНИМАЛЬНАЯ ГЛУБИНА ПОГРУЖЕНИЯ

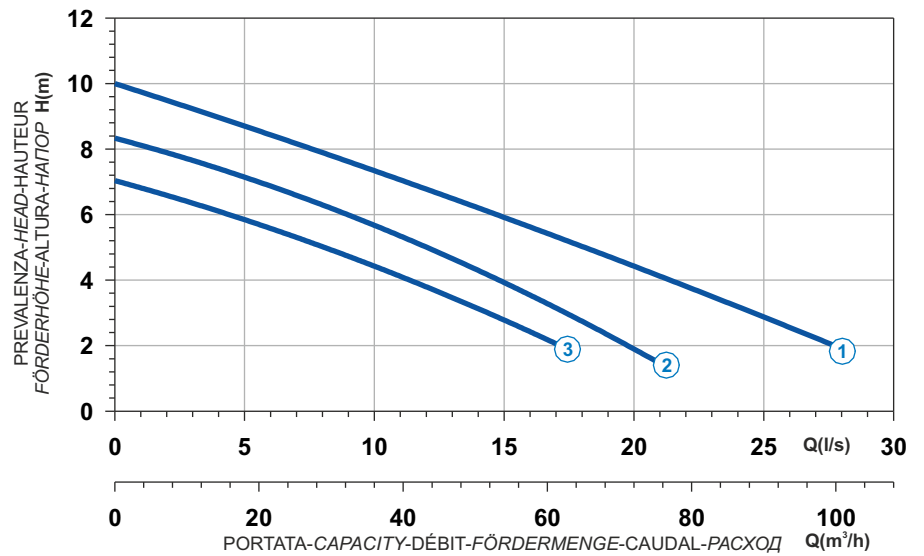




Ghisa EN-GJL-250  
 Fonte EN-GJL-250  
 Hierro fundido EN-GJL-250

Cast Iron EN-GJL-250  
 Grauguss EN-GJL-250  
 Чугун EN-GJL-250

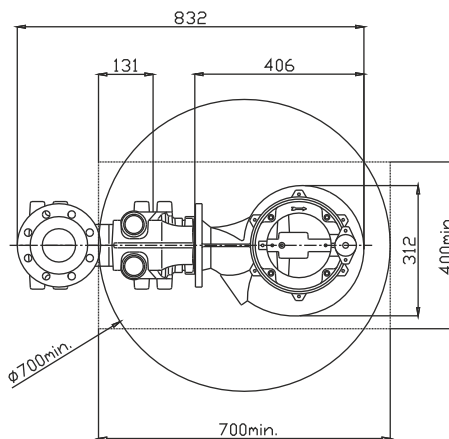
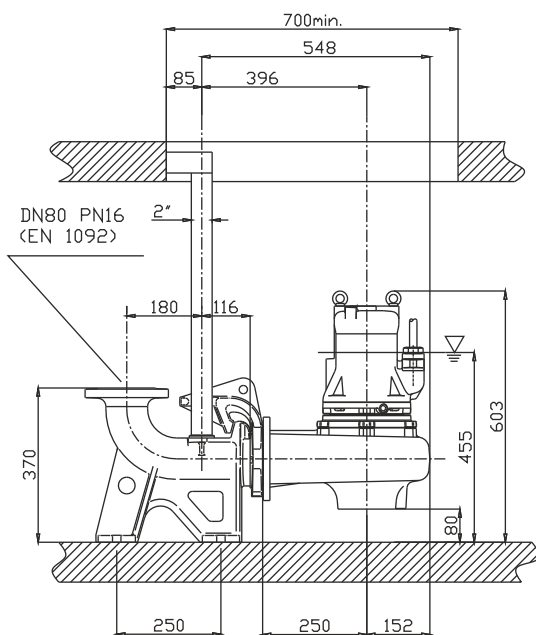
Curva caratteristica - Performance curve - Courbe caractéristique  
 Kennlinie - Curva característica - Характеристическая кривая



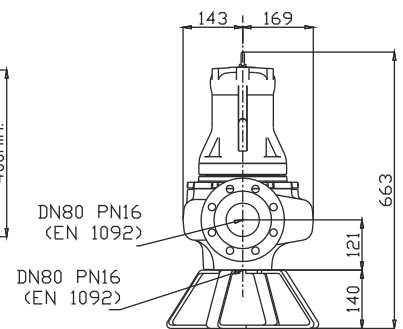
Power supply	3ph 400V 50Hz
R.P.M.	1450
Free passage (mm)	64
Discharge (mm)	DN 80
Max Weight (Kg)	64




Curve N°	Code	Type	MOTOR			ATEX code
			Rated power P2 (kW)	Rated current I (A)	Starting current Is (A)	
1	7002013	G409T6V1-M64AA0	3,2	6,2	27,9	7002794
2	7005119	G409T6V3-M64AA0	2,3	4,4	19,8	7001022
3	7001079	G409T6V5-M64AA0	1,9	3,7	16,7	7001870

### Dimensioni - Dimensions - Dimensions - Abmessungen - Dimensiones - Габариты (mm)



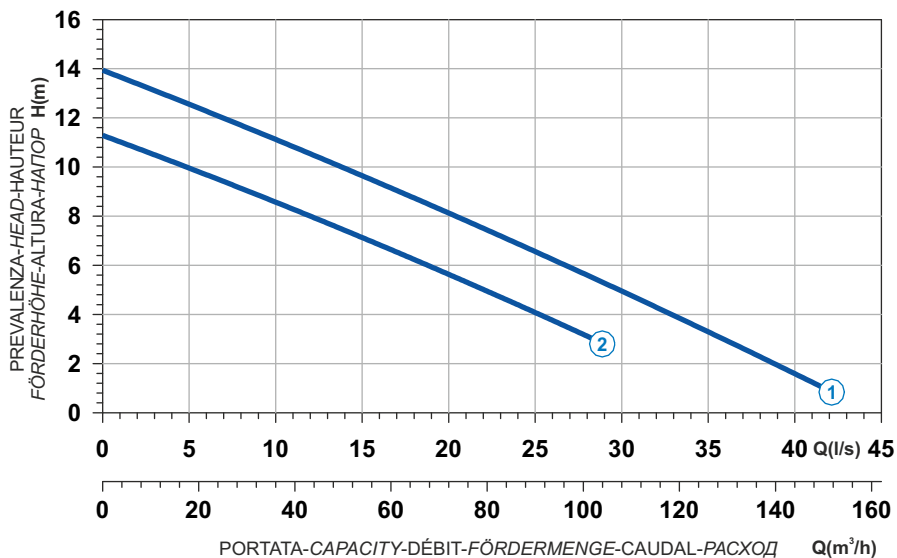
▽ LIVELLO MINIMO DI SOMMERSIBILITÀ  
 MINIMUM SUBMERSIBLE LEVEL  
 NIVEAU MINIMUM D'IMMERSION  
 MINDESTWASSERSTAND  
 NIVEL SUMERGIBLE MÍNIMO  
 МИНИМАЛЬНАЯ ГЛУБИНА ПОГРУЖЕНИИ




 Ghisa EN-GJL-250  
 Fonte EN-GJL-250  
 Hierro fundido EN-GJL-250

 Cast Iron EN-GJL-250  
 Grauguss EN-GJL-250  
 Чугун EN-GJL-250

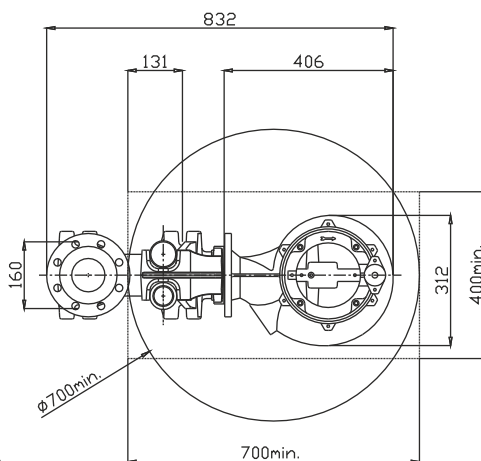
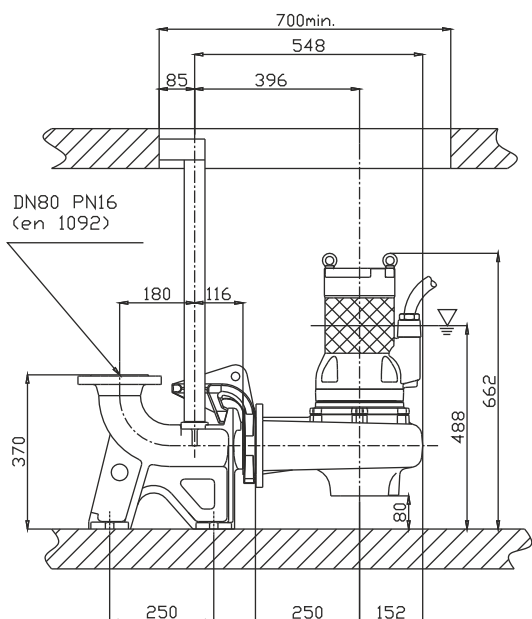
**Curva caratteristica - Performance curve - Courbe caractéristique**  
**Kennlinie - Curva característica - Характеристическая кривая**



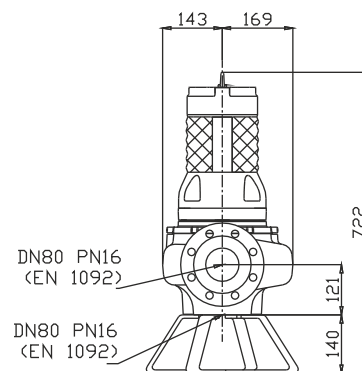
Curve N°	Code	Type	MOTOR			ATEX code 
			Rated power P2 (kW)	Rated current I (A)	Starting current Is (A)	
1	7002016	G410R6V1-M64AA2	4,9	9,9	49,5	7008203
2	7007908	G410R6V2-M64AA2	3,5	6,8	30,6	7002765

Power supply	3ph 400/690V 50Hz
R.P.M.	1450
Free passage (mm)	64
Discharge (mm)	DN 80
Max Weight (Kg)	79

## Dimensioni - Dimensions - Dimensions - Abmessungen - Dimensiones - Габариты (mm)



▽ LIVELLO MINIMO DI SOMMERGIBILITÀ  
 MINIMUM SUBMERSIBLE LEVEL  
 NIVEAU MINIMUM D'IMMERSION  
 MINDESTWASSERSTAND  
 NIVEL SUMERGIBLE MÍNIMO  
 МИНИМАЛЬНАЯ ГЛУБИНА ПОГРУЖЕНИЯ

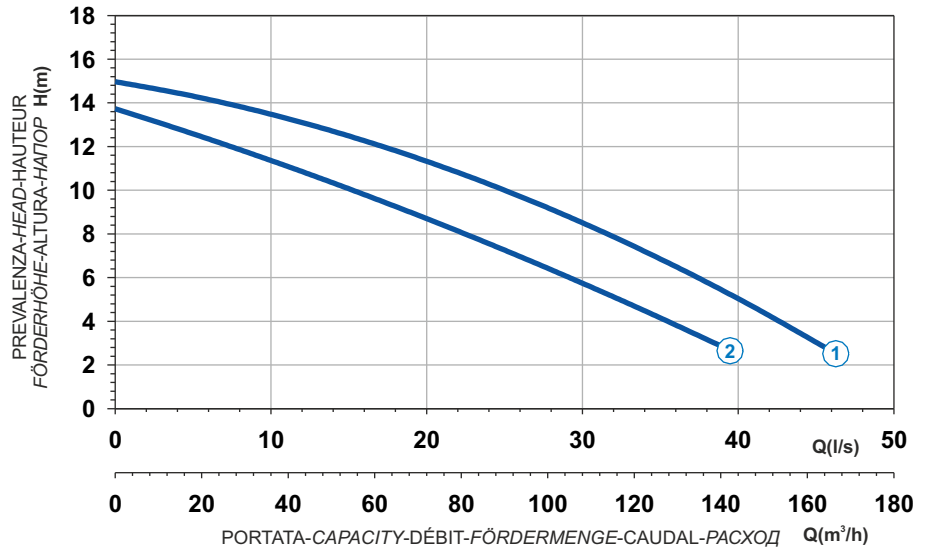




Ghisa EN-GJL-250  
 Fonte EN-GJL-250  
 Hierro fundido EN-GJL-250

Cast Iron EN-GJL-250  
 Grauguss EN-GJL-250  
 Чугун EN-GJL-250

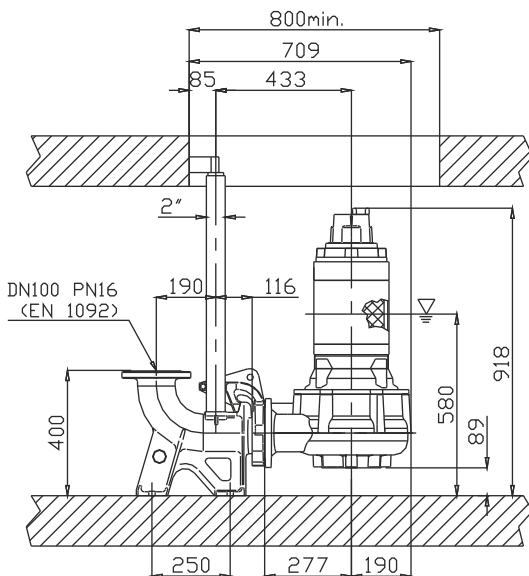
Curva caratteristica - Performance curve - Courbe caractéristique  
 Kennlinie - Curva característica - Характеристическая кривая



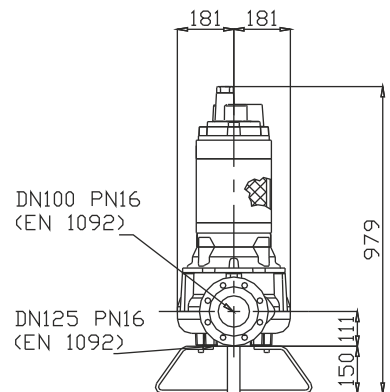
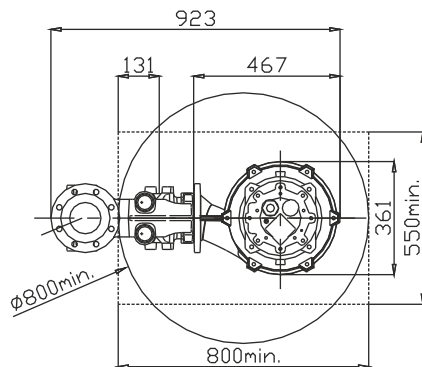
Power supply	3ph 400/690V 50Hz
R.P.M.	1450
Free passage (mm)	70x90
Discharge (mm)	DN 100
Max Weight (Kg)	165

Curve N°	Code	Type	MOTOR			ATEX code
			Rated power P2 (kW)	Rated current I (A)	Starting current Is (A)	
1	7006377	G411R6V1-P90AA2	7,5	14,3	84,4	7007500
2	7006378	G411R6V2-P90AA2	6	11,5	67,9	7007501

## Dimensioni - Dimensions - Dimensions - Abmessungen - Dimensiones - Габариты (mm)






▽ LIVELLO MINIMO DI SOMMERSIBILITÀ  
 MINIMUM SUBMERSIBLE LEVEL  
 NIVEAU MINIMUM D'IMMERSION  
 MINDESTWASSERSTAND  
 NIVEL SUMERGIBLE MÍNIMO  
 МИНИМАЛЬНАЯ ГЛУБИНА ПОГРУЖЕНИЯ



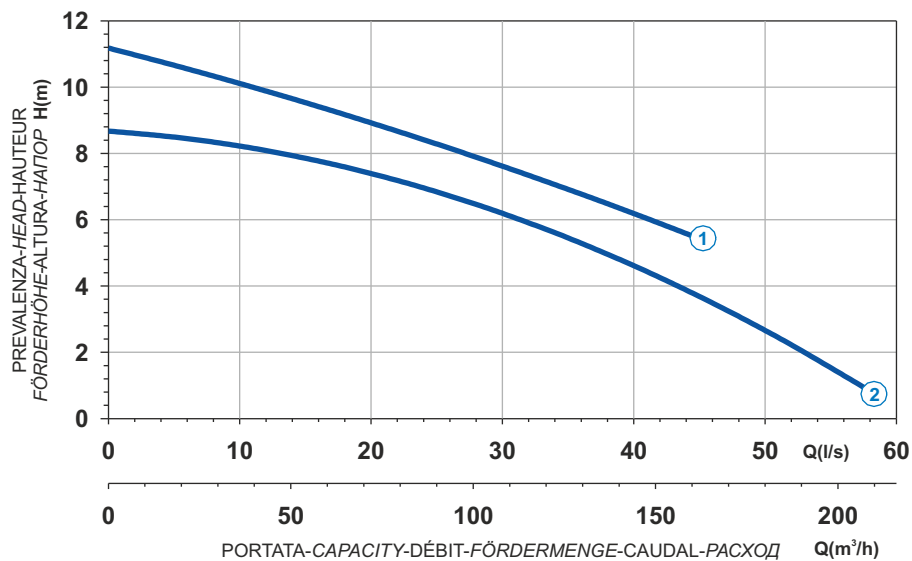
Versione disponibile con mantello di raffreddamento - Type available also with cooling jacket  
 Version disponible avec chemise de refroidissement - Ausführung auch mit Kühlmantel lieferbar  
 Disponible también con camisa de refrigeración - Вариант доступен с рубашкой охлаждения




 Ghisa EN-GJL-250  
 Fonte EN-GJL-250  
 Hierro fundido EN-GJL-250

 Cast Iron EN-GJL-250  
 Grauguss EN-GJL-250  
 Чугун EN-GJL-250

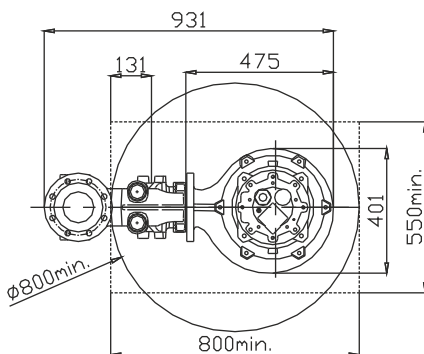
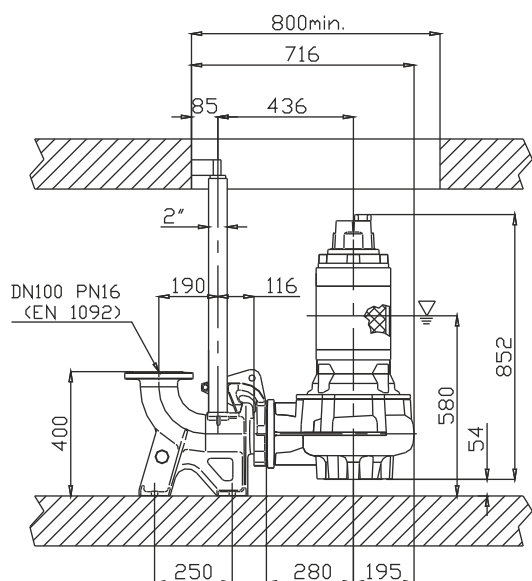
**Curva caratteristica - Performance curve - Courbe caractéristique**  
**Kennlinie - Curva característica - Характеристическая кривая**



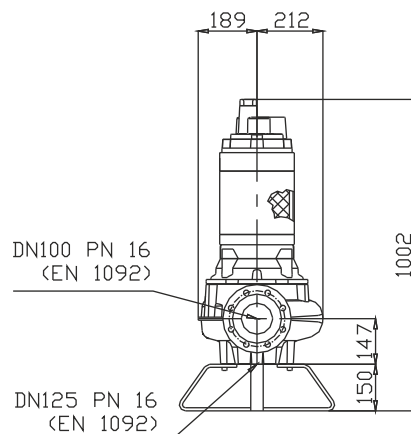
Curve N°	Code	Type	MOTOR			ATEX code 
			Rated power P2 (kW)	Rated current I (A)	Starting current Is (A)	
1	7002253	G611R6V1-P80AA2	6,5	13	76,7	7007504
2	7004980	G611R6V2-P80AA2	5,2	10,4	61,4	7007503

Power supply	3ph 400/690V 50Hz
R.P.M.	950
Free passage (mm)	80
Discharge (mm)	DN 100
Weight (Kg)	170

## Dimensioni - Dimensions - Dimensions - Abmessungen - Dimensiones - Габариты (mm)



▽ LIVELLO MINIMO DI SOMMERSIBILITÀ  
 MINIMUM SUBMERSIBLE LEVEL  
 NIVEAU MINIMUM D'IMMERSION  
 MINDESTWASSERSTAND  
 NIVEL SUMERGIBLE MÍNIMO  
 МИНИМАЛЬНАЯ ГЛУБИНА ПОГРУЖЕНИЯ



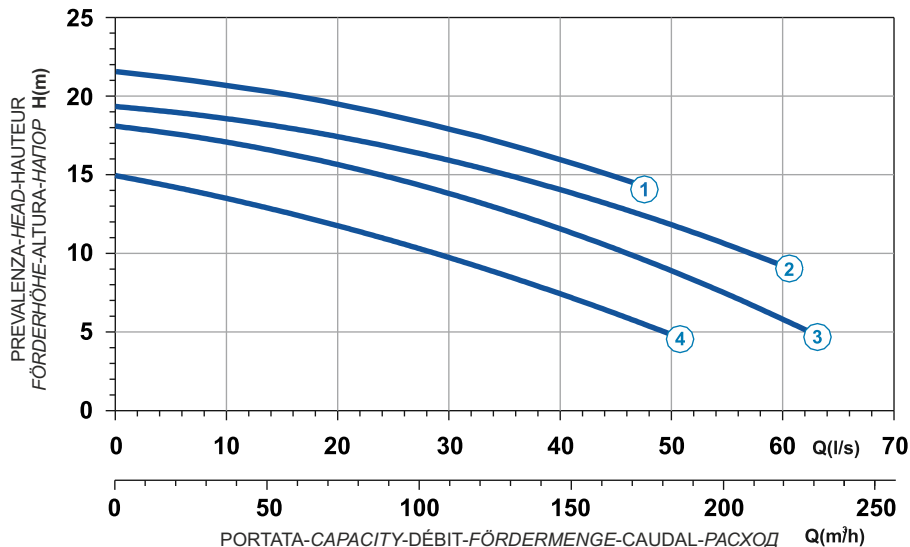
Versione disponibile con mantello di raffreddamento - Type available also with cooling jacket  
 Version disponible avec chemise de refroidissement - Ausführung auch mit Kühlmantel lieferbar  
 Disponible también con camisa de refrigeración - Вариант доступен с рубашкой охлаждения



Ghisa EN-GJL-250  
 Fonte EN-GJL-250  
 Hierro fundido EN-GJL-250

Cast Iron EN-GJL-250  
 Grauguss EN-GJL-250  
 Чугун EN-GJL-250

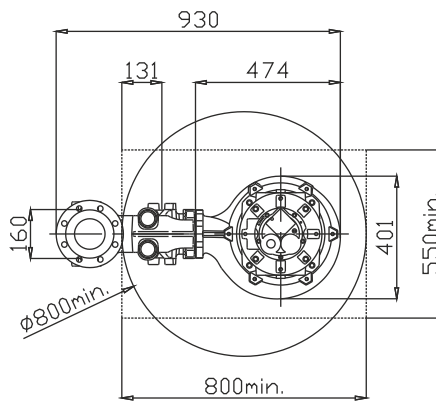
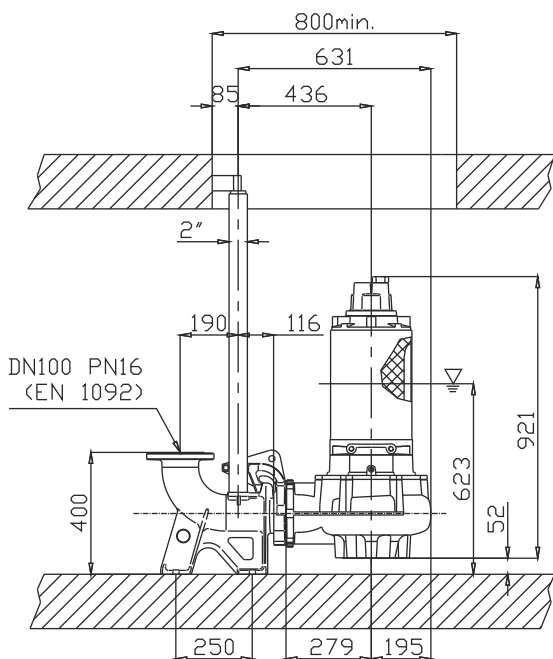
Curva caratteristica - Performance curve - Courbe caractéristique  
 Kennlinie - Curva característica - Характеристическая кривая



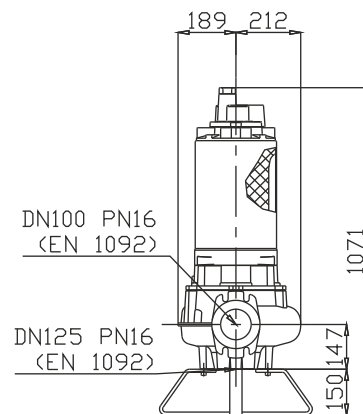
Power supply	3ph 400/690V 50Hz
R.P.M.	1450
Free passage (mm)	80
Discharge (mm)	DN 100
Max Weight (Kg)	205

Curve N°	Code	Type	MOTOR			ATEX code
			Rated power P2 (kW)	Rated current I (A)	Starting current Is (A)	
1	7003354	G413R6V6-P80AA2	17	31,5	185,9	-
2	7000189	G413R6V1-P80AA2	16	29,7	175	7007474
3	7001145	G413R6V2-P80AA2	12,9	24,1	142	7007390
4	7001166	G413R6V3-P80AA2	10	19	112	7007487




### Dimensioni - Dimensions - Dimensions - Abmessungen - Dimensiones - Габариты (mm)



▽ LIVELLO MINIMO DI SOMMERSIBILITÀ  
 MINIMUM SUBMERSIBLE LEVEL  
 NIVEAU MINIMUM D'IMMERSION  
 MINDESTWASSERSTAND  
 NIVEL SUMERGIBLE MÍNIMO  
 МИНИМАЛЬНАЯ ГЛУБИНА ПОГРУЖЕНИЯ

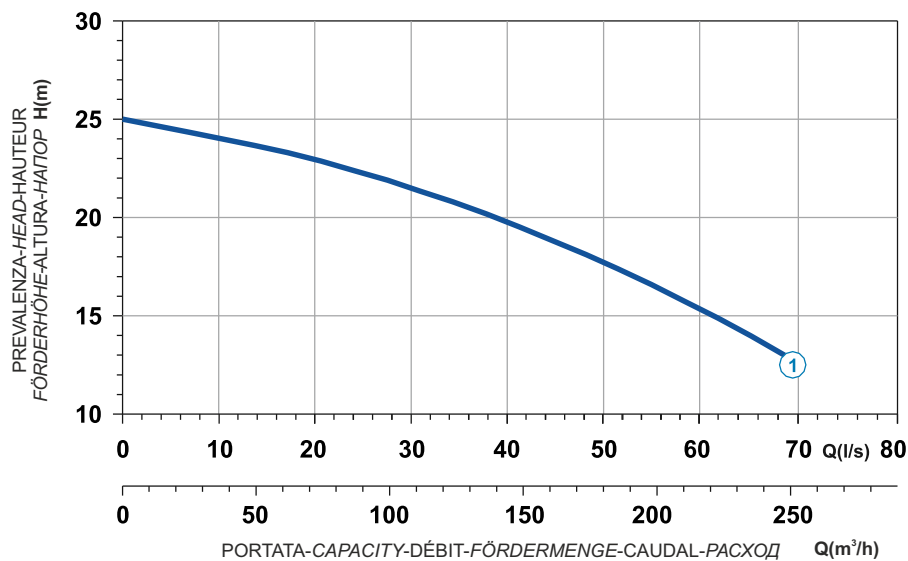



Versione disponibile con mantello di raffreddamento - Type available also with cooling jacket  
 Version disponible avec chemise de refroidissement - Ausführung auch mit Kühlmantel lieferbar  
 Disponible también con camisa de refrigeración - Вариант доступен с рубашкой охлаждения

 Ghisa EN-GJL-250  
 Fonte EN-GJL-250  
 Hierro fundido EN-GJL-250

 Cast Iron EN-GJL-250  
 Grauguss EN-GJL-250  
 Чугун EN-GJL-250

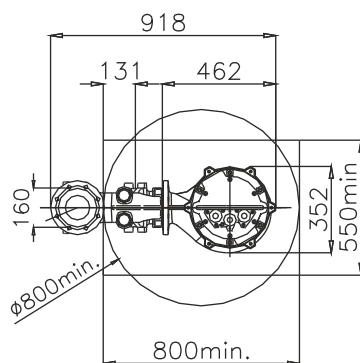
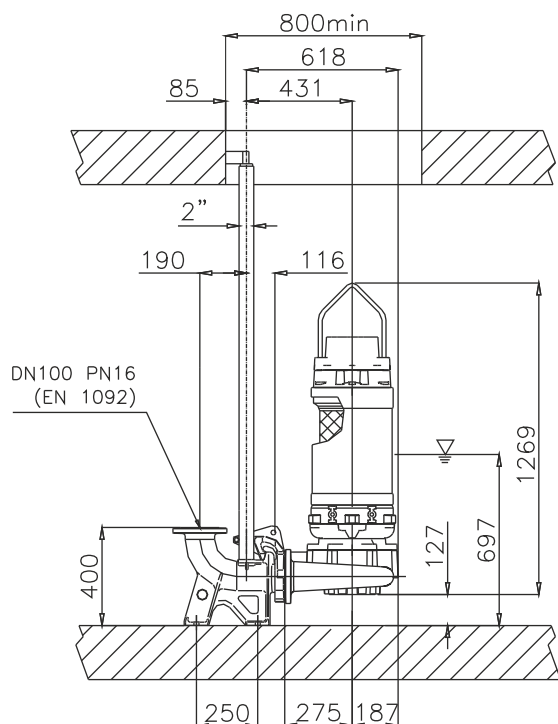
**Curva caratteristica - Performance curve - Courbe caractéristique**  
**Kennlinie - Curva característica - Характеристическая кривая**



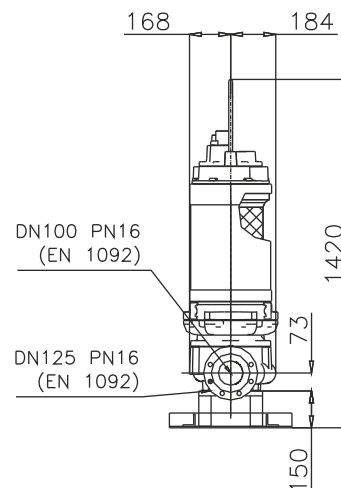
Curve N°	Code	Type	MOTOR			ATEX code 
			Rated power P2 (kW)	Rated current I (A)	Starting current Is (A)	
1	7006001	G416R6V1-P80AA2	23	42,2	249	7006773

Power supply	3ph 400/690V 50Hz
R.P.M.	1450
Free passage (mm)	80
Discharge (mm)	DN 100
Max Weight (Kg)	325

## Dimensioni - Dimensions - Dimensions - Abmessungen - Dimensiones - Габариты (mm)



▽ LIVELLO MINIMO DI SOMMERGIBILITÀ  
 MINIMUM SUBMERSIBLE LEVEL  
 NIVEAU MINIMUM D'IMMERSION  
 MINDESTWASSERSTAND  
 NIVEL SUMERGIBLE MÍNIMO  
 МИНИМАЛЬНАЯ ГЛУБИНА ПОГРУЖЕНИЯ



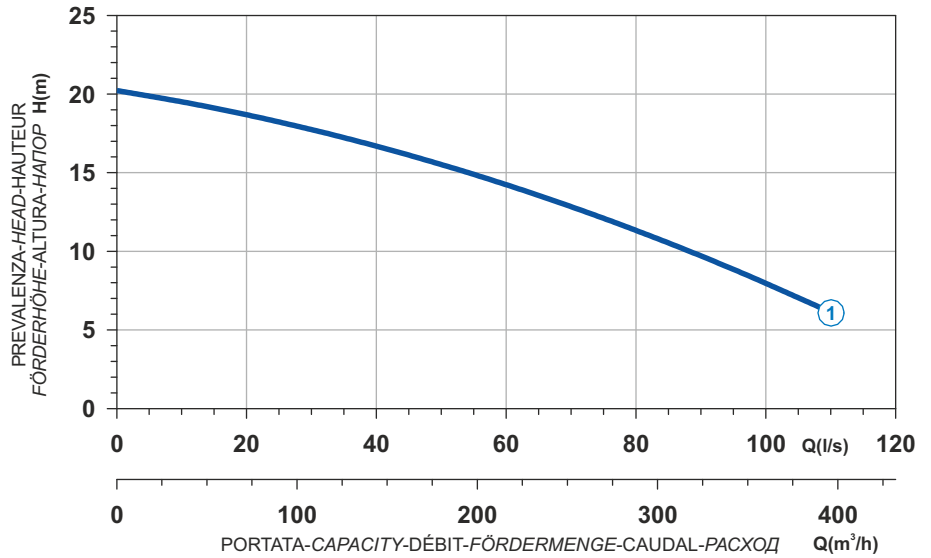
Versione disponibile con mantello di raffreddamento - Type available also with cooling jacket  
 Version disponible avec chemise de refroidissement - Ausführung auch mit Kühlmantel lieferbar  
 Disponible también con camisa de refrigeración - Вариант доступен с рубашкой охлаждения



- Ghisa EN-GJL-250
- Fonte EN-GJL-250
- Hierro fundido EN-GJL-250

- Cast Iron EN-GJL-250
- Grauguss EN-GJL-250
- Чугун EN-GJL-250

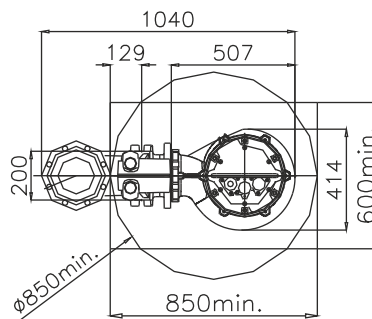
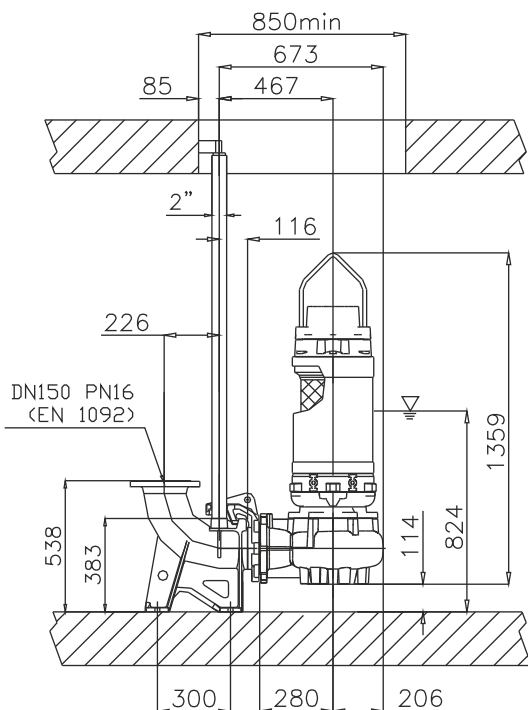
Curva caratteristica - Performance curve - Courbe caractéristique  
Kennlinie - Curva característica - Характеристическая кривая



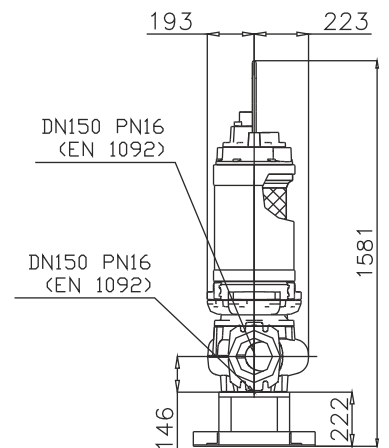
Power supply	3ph 400/690V 50Hz
R.P.M.	1450
Free passage (mm)	100
Discharge (mm)	DN 150
Max Weight (Kg)	355

Curve N°	Code	Type	MOTOR			ATEX code
			Rated power P2 (kW)	Rated current I (A)	Starting current Is (A)	
1	7005168	G416R6V1-S100AA2	27	49,6	293	7006285

Dimensioni - Dimensions - Dimensions - Abmessungen - Dimensiones - Габариты (mm)



▽ LIVELLO MINIMO DI SOMMERGIBILITÀ  
MINIMUM SUBMERSIBLE LEVEL  
NIVEAU MINIMUM D'IMMERSION  
MINDESTWASSERSTAND  
NIVEL SUMERGIBLE MÍNIMO  
МИНИМАЛЬНАЯ ГЛУБИНА ПОГРУЖЕНИЯ



Versione disponibile con mantello di raffreddamento - Type available also with cooling jacket  
Version disponible avec chemise de refroidissement - Ausführung auch mit Kühlmantel lieferbar  
Disponible también con camisa de refrigeración - Вариант доступен с рубашкой охлаждения

**Installazione a secco**  
**Dry pit installation**  
**Installation fixe en chambre sèche**  
**Trockenaufstellung**  
**Instalación fija en cámara aislada**  
**Сухая установка**

