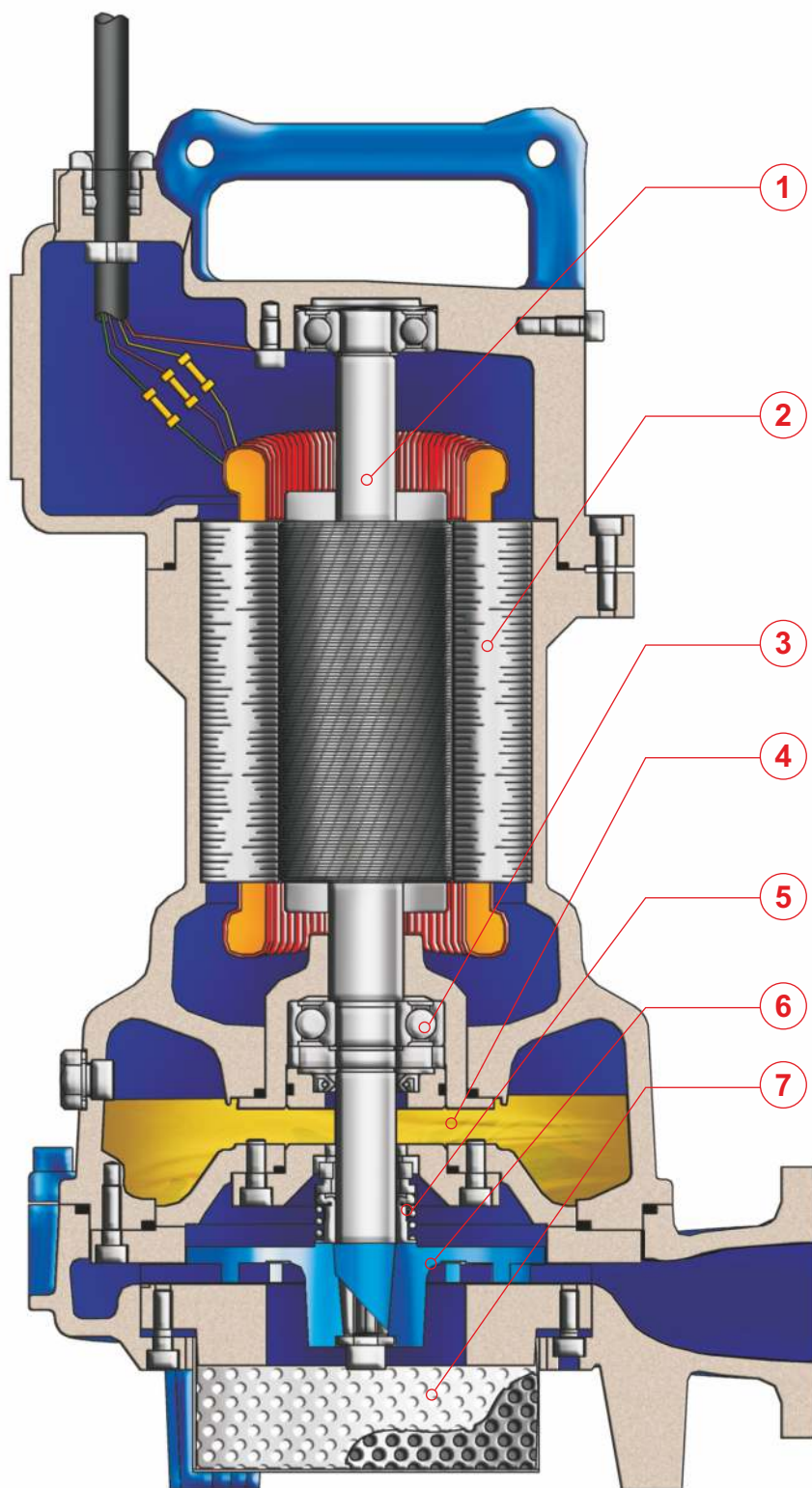


# DRAINAGE

Elettropompe sommergibili drenaggio 2 poli  
Submersible electric pumps for drainage 2 poles  
Electropompe submersible de drainage 2 pôles  
Tauchmotorpumpen für Schmutzwasser 2-polig  
Bombas sumergibles para drenaje 2 polos  
Дренажные погружные электронасосы 2 полюса





## IMPIEGHI

Le elettropompe sommergibili drenaggio sono utilizzate prevalentemente per il pompaggio di acque chiare o leggermente sporche. In particolare per lo svuotamento di acque piovane e di falda contenenti fango (cantieri, vasche di raccolta, stagni...).

### PARTICOLARITÀ COSTRUTTIVE

Elettropompe sommergibili di robusta e compatta costruzione, motori elettrici alloggiati in vano a tenuta stagna, collegati mediante alberi di lunghezze ridotte alle giranti situate in voluta tramite interposizione di camera olio tra parte idraulica e motore elettrico.

### MATERIALI

Fusioni principali	Ghisa EN-GJL-250
Girante	Ghisa Sferoidale GS400
Cavo elettrico	Neoprene H07RN/F
Albero	Acciaio inossidabile AISI 431 / Duplex
O-rings e paraolio	Nitrile
Bullonerie	Classe A4 - AISI316
Tenuta meccanica	Carburo di silicio / Carburo di silicio



## APPLICATIONS

Les pompes submersibles de drainage sont utilisées principalement pour le pompage d'eaux claires ou légèrement sales. En particulier pour la vidange d'eaux de pluie et de poches contenant boues (chantier, bassin de collecte d'eau de pluie, étang).

### PARTICULARITÉ DE CONSTRUCTION

Pompes submersibles robustes et compactes, moteurs électriques logés en enceinte étanche, reliés par des arbres de longueurs réduites aux roues, avec interposition d'une chambre à huile entre la partie hydraulique et le moteur électrique.

### MATÉRIAUX

Moulures principales	Fonte EN-GJL-250
Roue	Fonte Sferoidale GS400
Câble électrique	Néoprène H07RN/F
Arbre	Acier inoxydable AISI 431 / Duplex
O-ring et joints	Nitrile
vis	Classe A4 - AISI316
Garniture mécanique	Carb. de silicium / carbure de silicium



## UTILIZACION

Las bombas sumergibles para drenaje se utilizan principalmente para bombear aguas claras o poco sucias. Especialmente para vaciar aguas de lluvia o que contengan poco barro (obras, depósitos de recogida, estanques...).

### DIFERENCIAS PRINCIPALES

Son bombas sumergibles de robusta y compacta construcción, motores eléctricos situados en compartimento separado, conectadas mediante ejes cortos con los impulsores interpuestos con una cámara de aceite entre la parte hidráulica i el motor eléctrico.

### MATERIALES

Aleaciones principales	Hierro Fundido EN-GJL-250
Impulsor (turbina)	Hierro Fundido GS400
Cable eléctrico	Neopreno H07RN/F
Eje	Acero inoxidable AISI 431 / Duplex
Anillo de sellados y O-Rings	Nitrilo
Tornillos	Clase A4 - AISI316
Sello mecánico	Carburo de silicio / Carburo de silicio



## APPLICATION

Submersible electric pumps for drainage are used prevalently for to pump light water or lightly dirty water. In particular for the emptying of rain water and stratum water contents, mud (building site, tanks, ponds...).

### CONSTRUCTION DATA

Submersible electric pumps, robust in construction, watertight electric motors accommodated in compartment, connected, by shafts of reduced lengths, to the impellers situated at the pump casing by the interposition of oil chamber between the hydraulic side and the electric motor.

### MATERIALS

Motor housing	Cast iron EN-GJL-250
Impeller Spheroidal	Cast-iron GS400
Electric cable	Neoprene H07RN/F
Shaft	Stainless Steel AISI 431 / Duplex
O-rings and lip seal	Nitrile
Bolts	A4 - AISI316 class
Mechanical seal	Silicon Carbide / Silicon Carbide



## EINSATZBEREICHE

Schmutzwassertauchpumpen für sauberes und leicht verschmutztes Wasser. Speziell geeignet zur Förderung von Regen- und Grundwasser mit Schlamm (Baugruben, Sammelbehälter, Teiche...).

### AUSFÜHRUNG

Robuste Tauchmotorpumpe mit wasserdichtem Motor, kompakte Bauart, Laufrad im Pumpengehäuse durch Ölkammer zum Motor getrennt.

### WERKSTOFFE

Motorgehäuse	Grauguss EN-GJL-250
Laufrad	Sphäroguss GS400
Anschlusskabel	Neoprene H07RN/F
Welle	Edelstahl AISI 431 / Duplex
Wellendichtring und O-Ringe	Nitril
Schrauben	Edelstahl A4 - AISI316
Gleitringdichtung	Siliziumkarbid / Siliziumkarbid



## ОБЛАСТЬ ПРИМЕНЕНИЯ

Дренажные погружные электронасосы используются, в основном, для перекачки чистой или слегка загрязненной воды. В частности, для откачки дождевой воды и грунтовых вод, содержащих грязь и песок с абразивными частицами (стройки, сборные емкости, пруды...).

### КОНСТРУКЦИОННЫЕ ОСОБЕННОСТИ

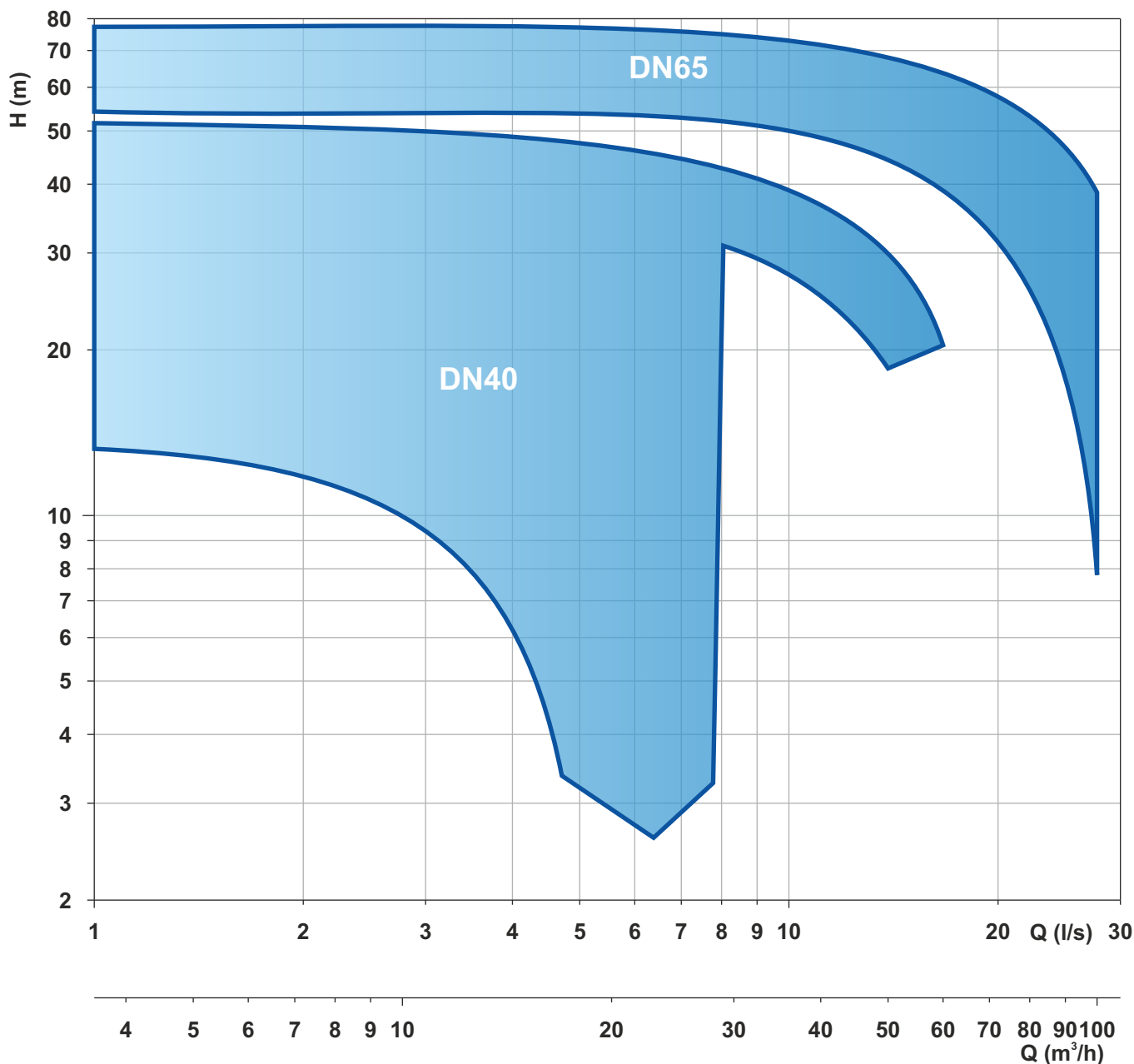
Погружные электронасосы с прочной и компактной конструкцией. Электродвигатели размещены в секции с герметичным уплотнением и соединены через валы небольшой длины с рабочими колесами, расположенными в гидравлической камере. Валы проходят через масляную камеру между гидравликой и электродвигателем.

### МАТЕРИАЛЫ

Основные литые компоненты	Чугун EN-GJL-250,
Рабочее колесо	Чугун Gs400
Электрокабель	Неопрен H07RN/F
Вал	Нержавеющая сталь AISI 431 / Дуплекс
Уплот. кольца и манжета	Нитрил
Винты	Класс A4 - AISI316
Мех. уплотнение	Карбид кремния/Карбид кремния.

## DRAINAGE

Elettropompe sommergibili drenaggio 2 poli  
 Submersible electric pumps for drainage 2 poles  
 Electropompe submersible de drainage 2 pôles  
 Tauchmotorpumpen für Schmutzwasser 2-polig  
 Bombas sumergibles para drenaje 2 polos  
 Дренажные погружные электронасосы 2 полюса



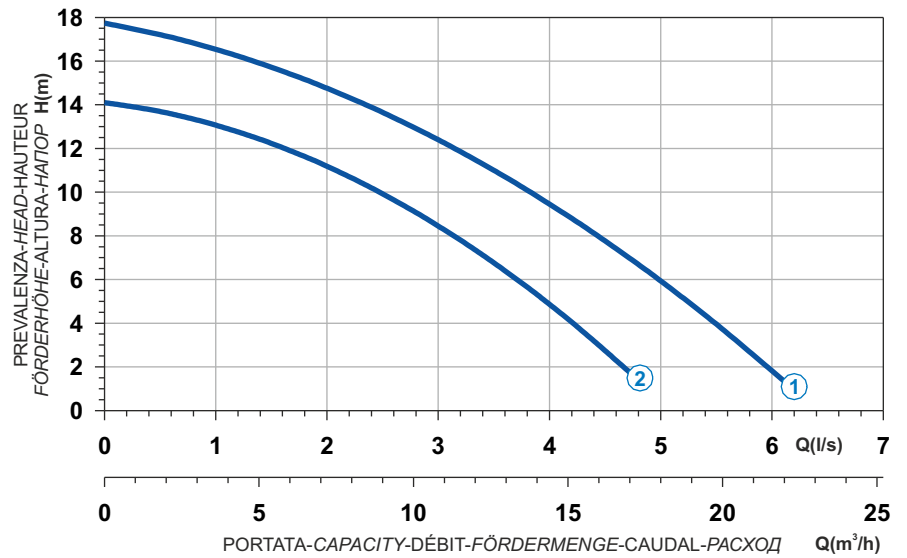
Le schede tecniche sono disponibili al sito [www.faggiolatipumps.com](http://www.faggiolatipumps.com)  
 Technical data sheets are available on our web site [www.faggiolatipumps.com](http://www.faggiolatipumps.com)  
 Les fiches techniques sont disponibles sur notre site web [www.faggiolatipumps.com](http://www.faggiolatipumps.com)  
 Technische Datenblätter finden Sie auf unserer Internetseite [www.faggiolatipumps.com](http://www.faggiolatipumps.com)  
 Las hojas de datos técnicas están disponibles en nuestro web site [www.faggiolatipumps.com](http://www.faggiolatipumps.com)  
 Технические спецификации доступны на веб-сайте [www.faggiolatipumps.com](http://www.faggiolatipumps.com)



- Ghisa EN-GJL-250
- Fonte EN-GJL-250
- Hierro fundido EN-GJL-250

- Cast Iron EN-GJL-250
- Grauguss EN-GJL-250
- Чугун EN-GJL-250

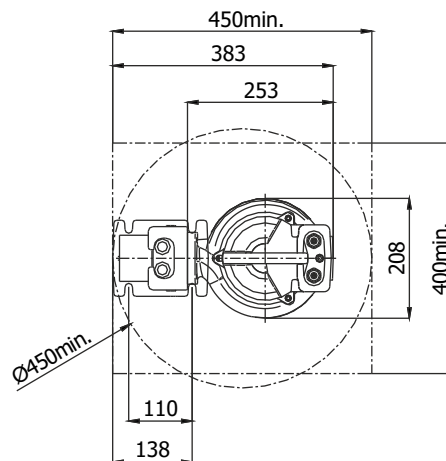
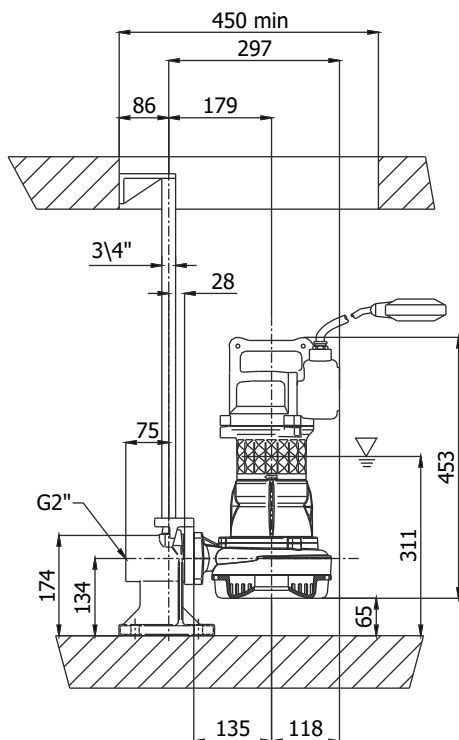
Curva caratteristica - Performance curve - Courbe caractéristique  
Kennlinie - Curva característica - Характеристическая кривая



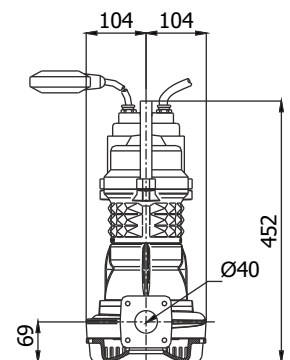
Power supply	1ph 230V 50Hz
R.P.M.	2850
Free passage (mm)	6
Discharge (mm)	DN 40
Max Weight (Kg)	31



Curve N°	Code	Type	MOTOR			ATEX code
			Rated power P2 (kW)	Rated current I (A)	Starting current Is (A)	
1	7000904	G272M3D1-J6AB1	1,1	6,6	24,4	-
2	7009018	G272M3D2-J6AB1	1,1	6,6	24,4	-

Dimensioni - Dimensions - Dimensions - Abmessungen - Dimensiones - Габариты (mm)



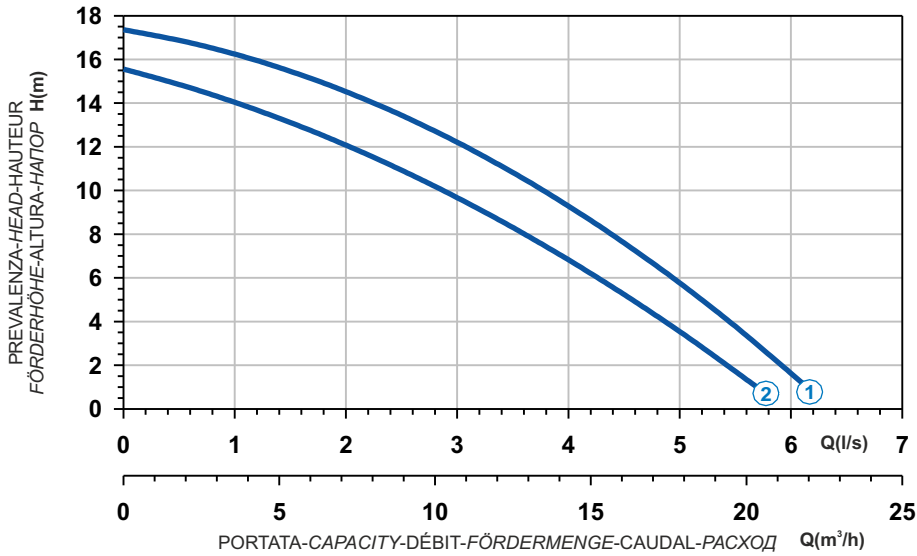
▽ LIVELLO MINIMO DI SOMMERSIBILITÀ  
MINIMUM SUBMERSIBLE LEVEL  
NIVEAU MINIMUM D'IMMERSION  
MINDESTWASSERSTAND  
NIVEL SUMERGIBLE MÍNIMO  
МИНИМАЛЬНАЯ ГЛУБИНА ПОГРУЖЕНИЯ




 Ghisa EN-GJL-250  
 Fonte EN-GJL-250  
 Hierro fundido EN-GJL-250

 Cast Iron EN-GJL-250  
 Grauguss EN-GJL-250  
 Чугун EN-GJL-250

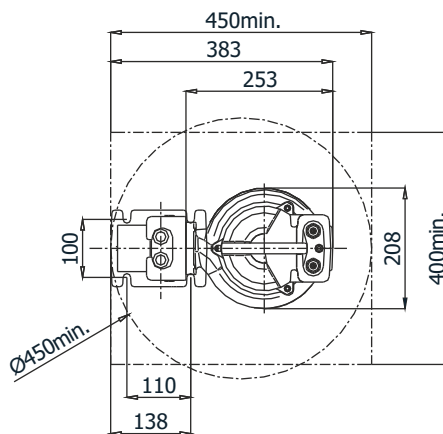
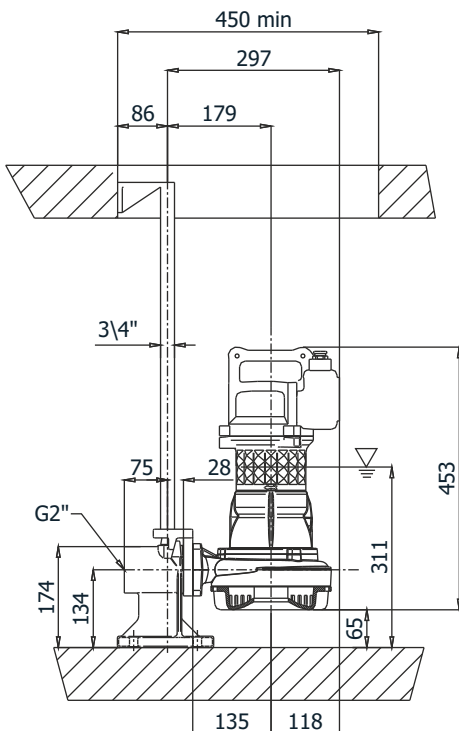
**Curva caratteristica - Performance curve - Courbe caractéristique**  
**Kennlinie - Curva característica - Характеристическая кривая**



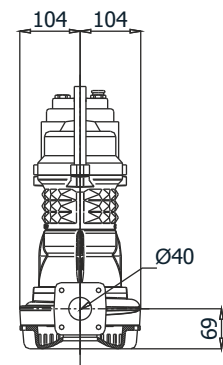
Curve N°	Code	Type	MOTOR			ATEX code 
			Rated power P2 (kW)	Rated current I (A)	Starting current Is (A)	
1	7000951	G272T3D1-J6AA0	1,4	2,7	13,2	-
2	7009017	G272T3D2-J6AA0	1,1	2,4	11,8	-

Power supply	3ph 400V-50Hz
R.P.M.	2850
Free passage (mm)	6
Discharge (mm)	DN 40
Max Weight (Kg)	31

**Dimensioni - Dimensions - Dimensions - Abmessungen - Dimensiones - Габариты (mm)**



▽ LIVELLO MINIMO DI SOMMERGIBILITÀ  
 MINIMUM SUBMERSIBLE LEVEL  
 NIVEAU MINIMUM D'IMMERSION  
 MINDESTWASSERSTAND  
 NIVEL SUMERGIBLE MÍNIMO  
 МИНИМАЛЬНАЯ ГЛУБИНА ПОГРУЖЕНИЯ



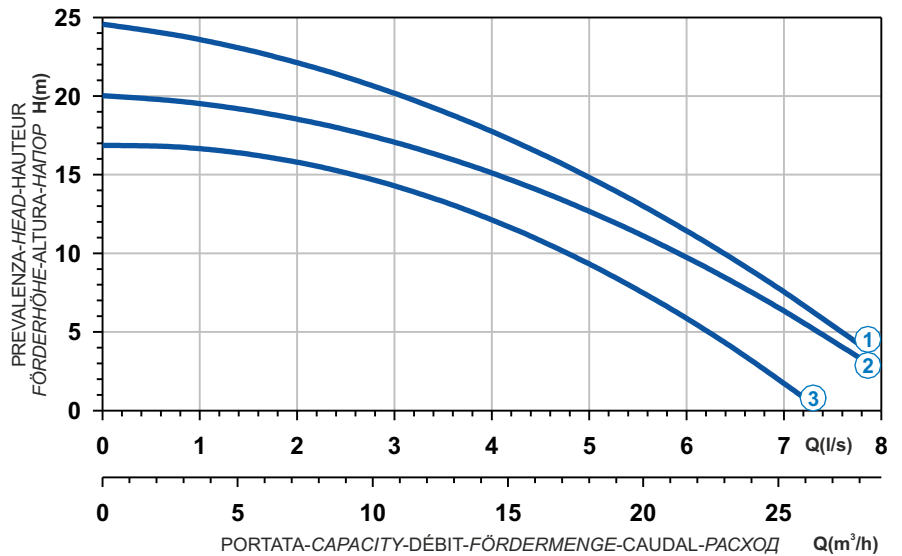




- Ghisa EN-GJL-250
- Fonte EN-GJL-250
- Hierro fundido EN-GJL-250

- Cast Iron EN-GJL-250
- Grauguss EN-GJL-250
- Чугун EN-GJL-250

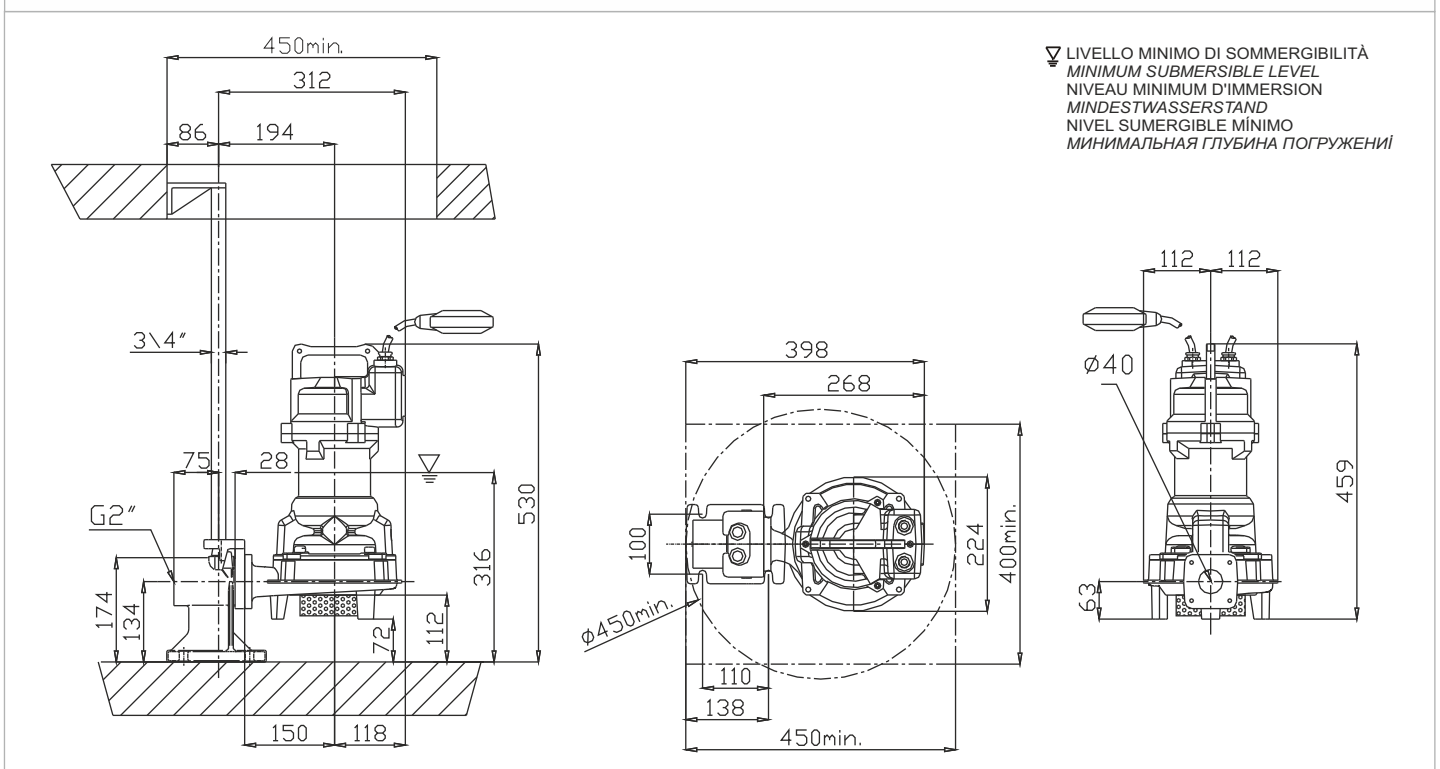
Curva caratteristica - Performance curve - Courbe caractéristique  
Kennlinie - Curva característica - Характеристическая кривая






Power supply	1ph 230V-50Hz
R.P.M.	2850
Free passage (mm)	6
Discharge (mm)	DN 40
Max Weight (Kg)	38

Curve N°	Code	Type	MOTOR			ATEX code
			Rated power P2 (kW)	Rated current I (A)	Starting current Is (A)	
1	7003536	G271M6D1-J6AB1	1,9	11,4	62,7	7002810
2	7003535	G271M6D2-J6AB1	1,5	9	33,3	7003547
3	7003534	G271M6D3-J6AB1	1,1	6,6	24,4	7003548

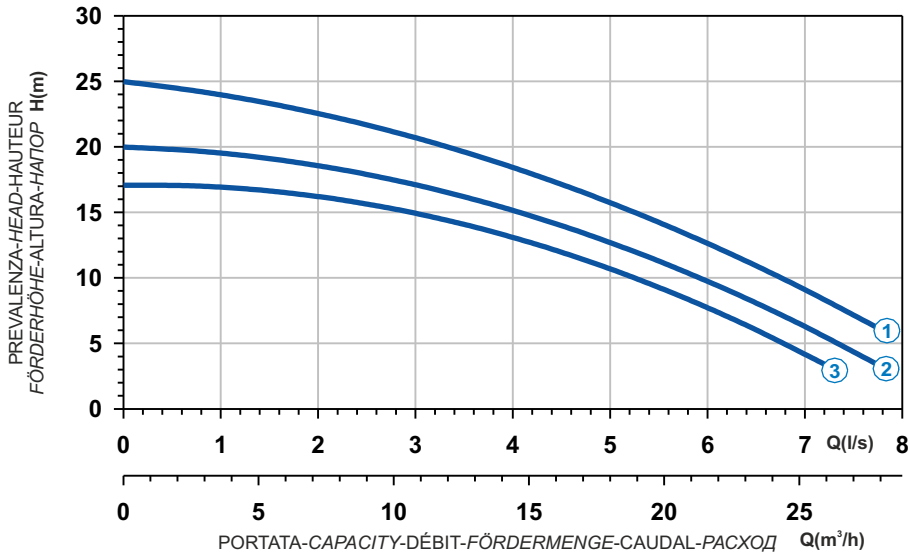
Dimensioni - Dimensions - Dimensions - Abmessungen - Dimensiones - Габариты (mm)




 Ghisa EN-GJL-250  
 Fonte EN-GJL-250  
 Hierro fundido EN-GJL-250

 Cast Iron EN-GJL-250  
 Grauguss EN-GJL-250  
 Чугун EN-GJL-250

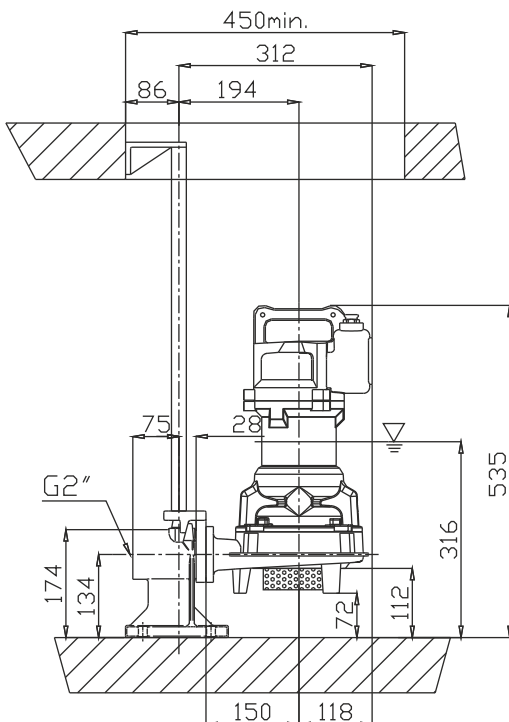
**Curva caratteristica - Performance curve - Courbe caractéristique  
Kennlinie - Curva característica - Характеристическая кривая**



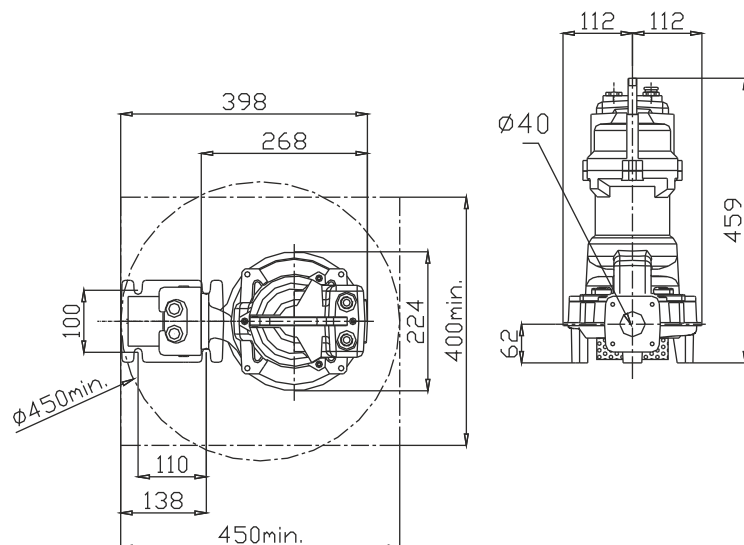
Curve N°	Code	Type	MOTOR			ATEX code 
			Rated power P2 (kW)	Rated current I (A)	Starting current Is (A)	
1	7003398	G271T6D1-J6AA0	2,4	4,5	26,6	7003443
2	7003432	G271T6D2-J6AA0	1,8	3,5	17,2	7003442
3	7003433	G271T6D3-J6AA0	1,6	3,1	15,2	7003441

Power supply	3ph 400V 50Hz
R.P.M.	2850
Free passage (mm)	6
Discharge (mm)	DN 40
Max Weight (Kg)	38

**Dimensioni - Dimensions - Dimensions - Abmessungen - Dimensiones - Габариты (mm)**



▽ LIVELLO MINIMO DI SOMMERGIBILITÀ  
 MINIMUM SUBMERSIBLE LEVEL  
 NIVEAU MINIMUM D'IMMERSION  
 MINDESTWASSERSTAND  
 NIVEL SUMERGIBLE MINIMO  
 МИНИМАЛЬНАЯ ГЛУБИНА ПОГРУЖЕНИЯ

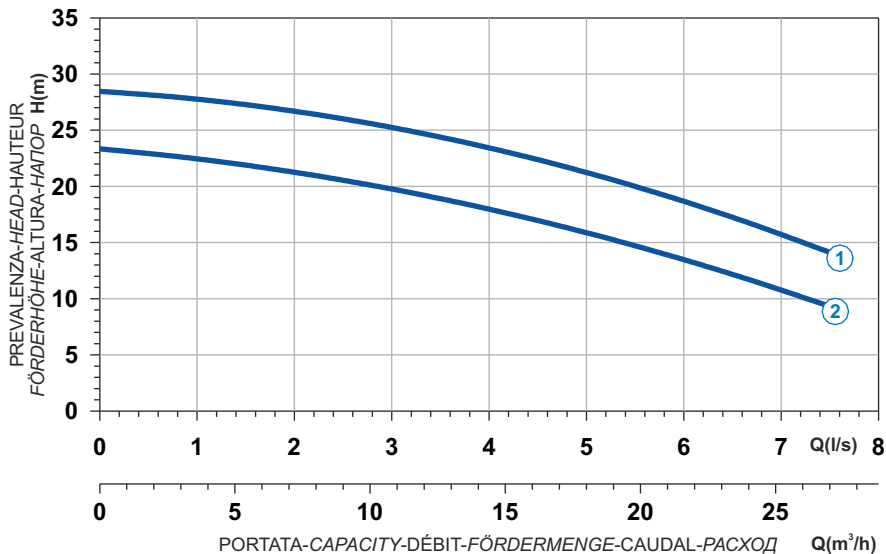




- Ghisa EN-GJL-250
- Fonte EN-GJL-250
- Hierro fundido EN-GJL-250

- Cast Iron EN-GJL-250
- Grauguss EN-GJL-250
- Чугун EN-GJL-250

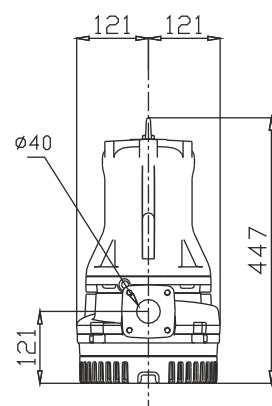
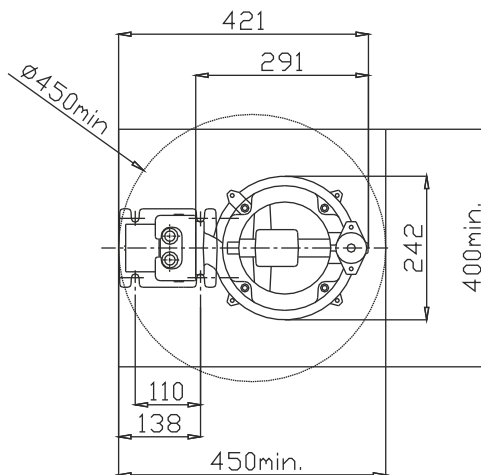
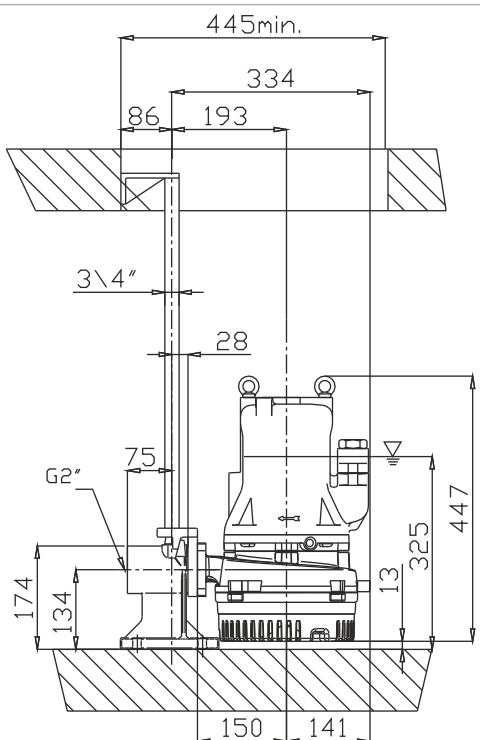
**Curva caratteristica - Performance curve - Courbe caractéristique  
Kennlinie - Curva característica - Характеристическая кривая**



Power supply	3ph 400V 50Hz
R.P.M.	2850
Free passage (mm)	7
Discharge (mm)	DN 40
Max Weight (Kg)	52




Curve N°	Code	Type	MOTOR			ATEX code
			Rated power P2 (kW)	Rated current I (A)	Starting current Is (A)	
1	7003488	G209T6D1-J7AA0	3,1	5,8	34,2	7003489
2	7003540	G209T6D2-J7AA0	3,1	5,8	34,2	7002631

**Dimensioni - Dimensions - Dimensions - Abmessungen - Dimensiones - Габариты (mm)**



▽ LIVELLO MINIMO DI SOMMERSIBILITÀ  
MINIMUM SUBMERSIBLE LEVEL  
NIVEAU MINIMUM D'IMMERSION  
MINDESTWASSERSTAND  
NIVEL SUMERGIBLE MÍNIMO  
МИНИМАЛЬНАЯ ГЛУБИНА ПОГРУЖЕНИЯ



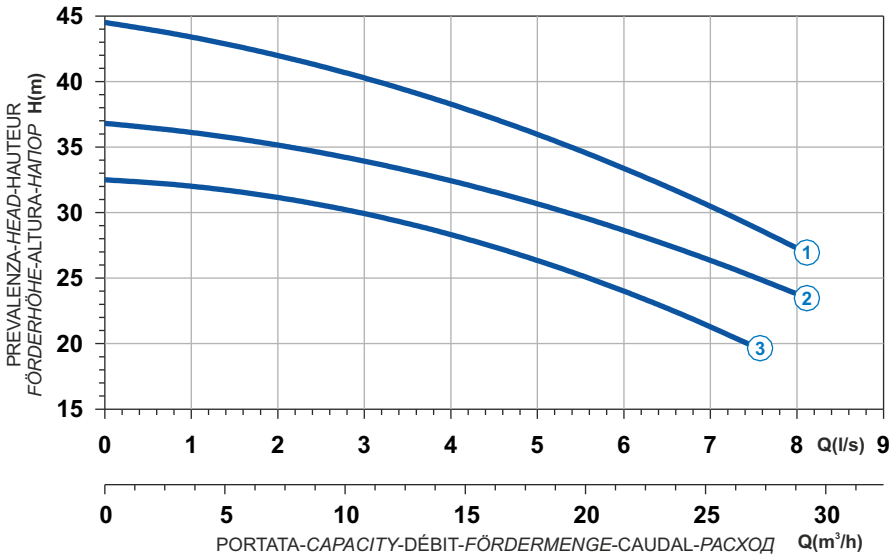
 Ghisa EN-GJL-250  
 Fonte EN-GJL-250  
 Hierro fundido EN-GJL-250


 Cast Iron EN-GJL-250  
 Grauguss EN-GJL-250  
 Чугун EN-GJL-250



D

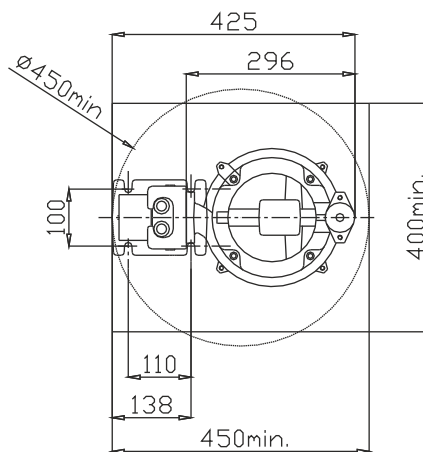
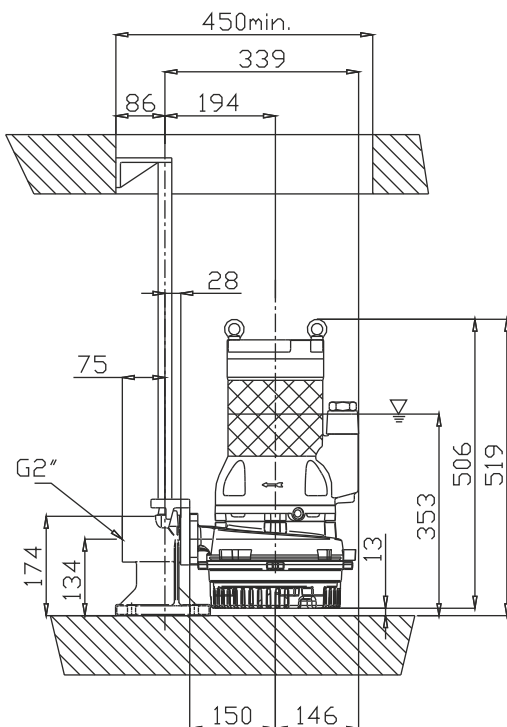
Curva caratteristica - Performance curve - Courbe caractéristique  
Kennlinie - Curva característica - Характеристическая кривая



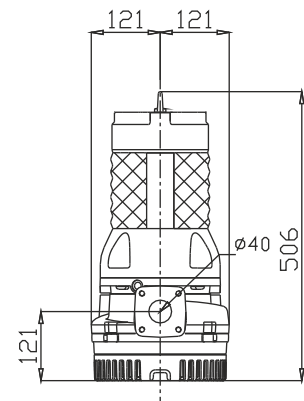
Curve N°	Code	Type	MOTOR			ATEX code 
			Rated power P2 (kW)	Rated current I (A)	Starting current Is (A)	
1	7003480	G210R6D1-J7AA2	6	10,9	64,3	7003481
2	7003484	G210R6D3-J7AA2	5	9,1	53,7	7003485
3	7003486	G210R6D4-J7AA2	4,2	7,7	45,4	7003487

Power supply	3ph 400/690V 50Hz
R.P.M.	2850
Free passage (mm)	7
Discharge (mm)	DN 40
Max Weight (Kg)	68

Dimensioni - Dimensions - Dimensions - Abmessungen - Dimensiones - Габариты (mm)



▽ LIVELLO MINIMO DI SOMMERGIBILITÀ  
 MINIMUM SUBMERSIBLE LEVEL  
 NIVEAU MINIMUM D'IMMERSION  
 MINDESTWASSERSTAND  
 NIVEL SUMERGIBLE MÍNIMO  
 МИНИМАЛЬНАЯ ГЛУБИНА ПОГРУЖЕНИЯ

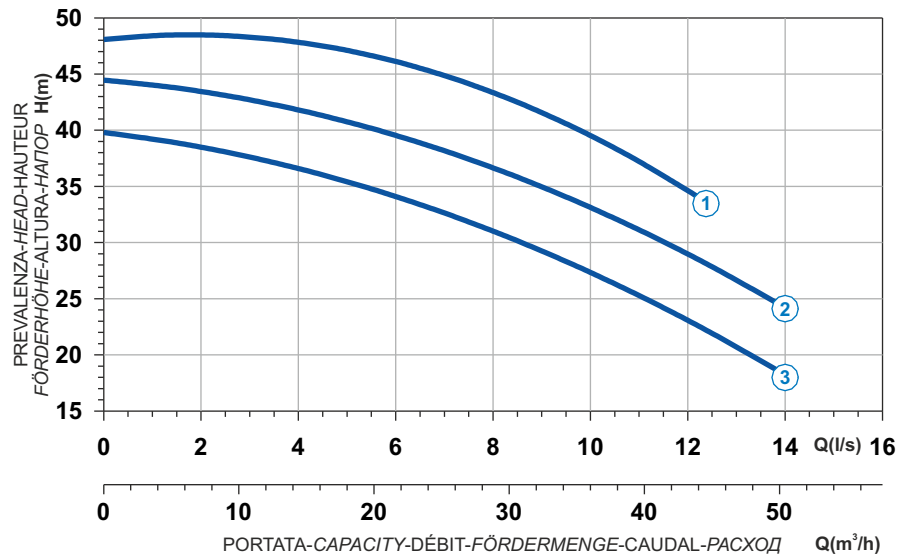




Ghisa EN-GJL-250  
 Fonte EN-GJL-250  
 Hierro fundido EN-GJL-250

Cast Iron EN-GJL-250  
 Grauguss EN-GJL-250  
 Чугун EN-GJL-250

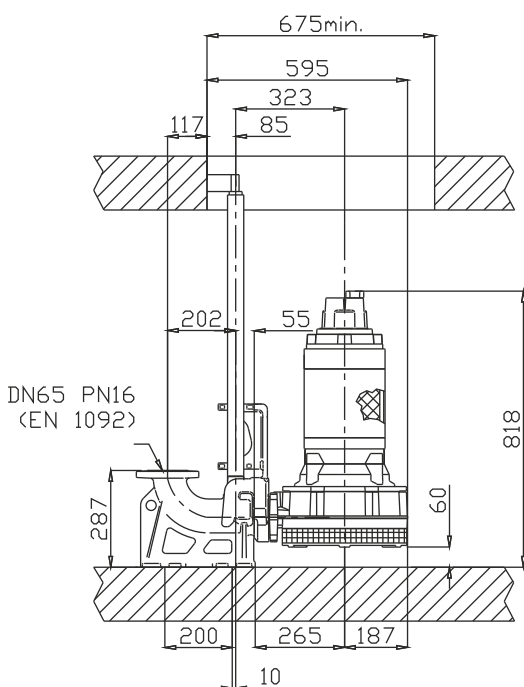
**Curva caratteristica - Performance curve - Courbe caractéristique  
Kennlinie - Curva característica - Характеристическая кривая**



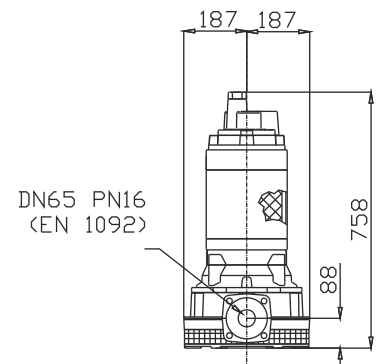
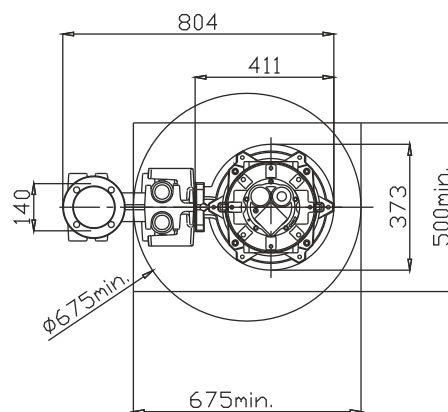
Power supply	3ph 400/690V 50Hz
R.P.M.	2850
Free passage (mm)	8
Discharge (mm)	DN 65
Max Weight (Kg)	176

Curve N°	Code	Type	MOTOR			ATEX code
			Rated power P2 (kW)	Rated current I (A)	Starting current Is (A)	
1	7008687	G211R6D4-L8AA2	10	18	106	7000810
2	7002748	G211R6D1-L8AA2	9	16,2	95,6	7009205
3	7002760	G211R6D2-L8AA2	7,5	13,5	79,7	7002069




**Dimensioni - Dimensions - Dimensions - Abmessungen - Dimensiones - Габариты (mm)**




▽ LIVELLO MINIMO DI SOMMERSIBILITÀ  
 MINIMUM SUBMERSIBLE LEVEL  
 NIVEAU MINIMUM D'IMMERSION  
 MINDESTWASSERSTAND  
 NIVEL SUMERGIBLE MÍNIMO  
 МИНИМАЛЬНАЯ ГЛУБИНА ПОГРУЖЕНИЯ

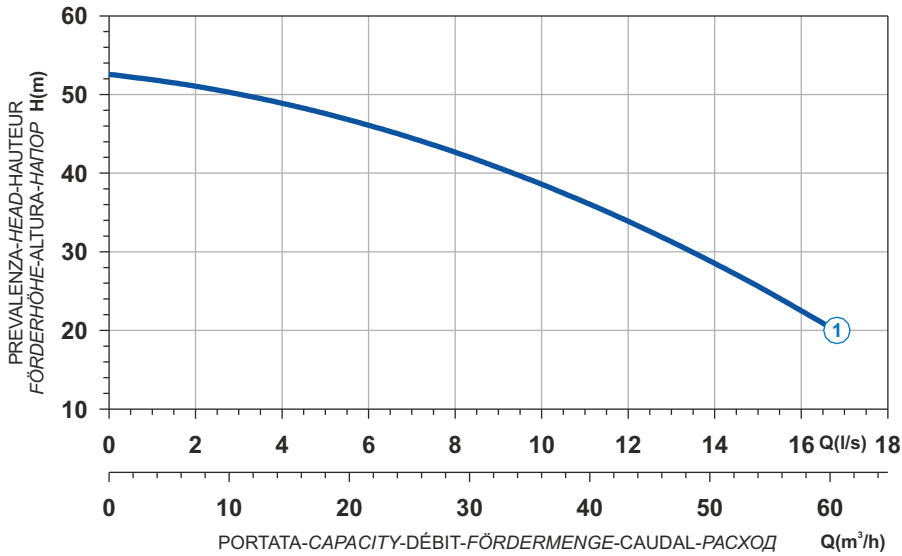



Versione disponibile con mantello di raffreddamento - Type available also with cooling jacket  
 Version disponible avec chemise de refroidissement - Ausführung auch mit Kühlmantel lieferbar  
 Disponible también con camisa de refrigeración - Вариант доступен с рубашкой охлаждения

 Ghisa EN-GJL-250  
 Fonte EN-GJL-250  
 Hierro fundido EN-GJL-250

 Cast Iron EN-GJL-250  
 Grauguss EN-GJL-250  
 Чугун EN-GJL-250

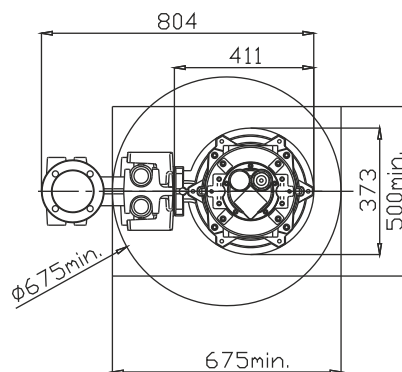
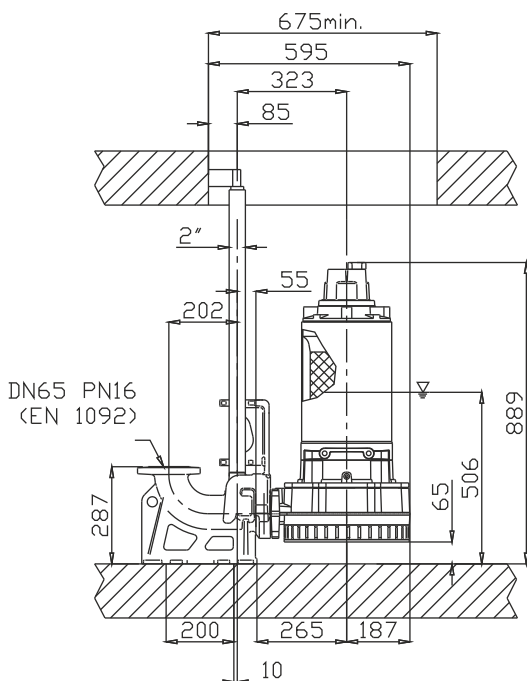
**Curva caratteristica - Performance curve - Courbe caractéristique  
Kennlinie - Curva característica - Характеристическая кривая**



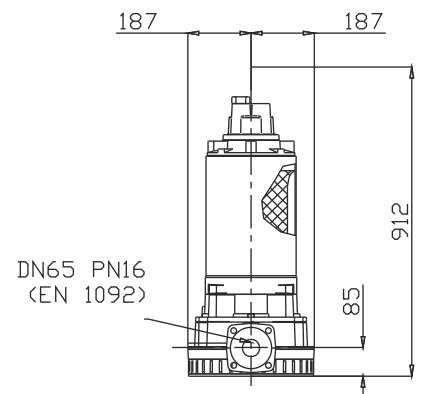
Curve N°	Code	Type	MOTOR			ATEX code 
			Rated power P2 (kW)	Rated current I (A)	Starting current Is (A)	
1	7001365	G213R6D7-L8AA2	11	19,9	117,4	7005855

Power supply	3ph 400/690V 50Hz
R.P.M.	2850
Free passage (mm)	8
Discharge (mm)	DN 65
Max Weight (Kg)	195

**Dimensioni - Dimensions - Dimensions - Abmessungen - Dimensiones - Габариты (mm)**






▽ LIVELLO MINIMO DI SOMMERGIBILITÀ  
 MINIMUM SUBMERSIBLE LEVEL  
 NIVEAU MINIMUM D'IMMERSION  
 MINDESTWASSERSTAND  
 NIVEL SUMERGIBLE MÍNIMO  
 МИНИМАЛЬНАЯ ГЛУБИНА ПОГРУЖЕНИЯ



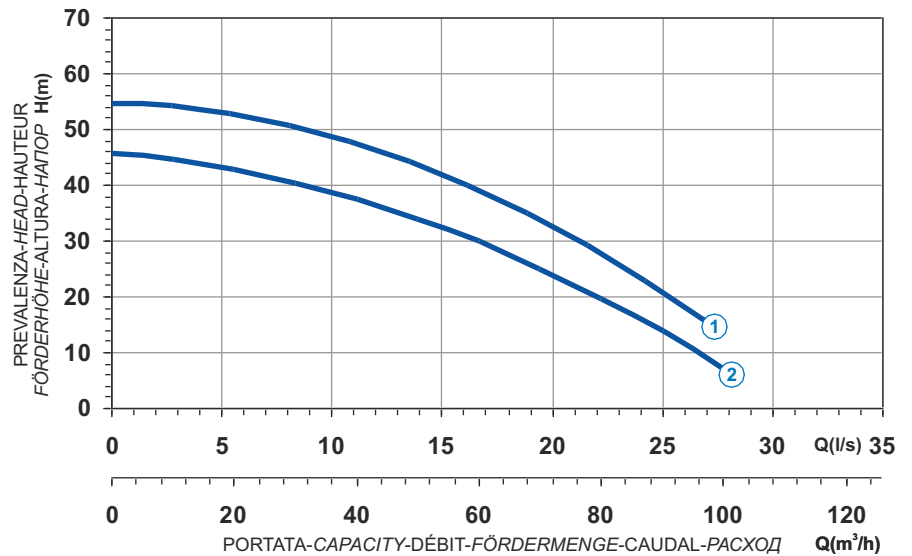
Versione disponibile con mantello di raffreddamento - Type available also with cooling jacket  
 Version disponible avec chemise de refroidissement - Ausführung auch mit Kühlmantel lieferbar  
 Disponible también con camisa de refrigeración - Вариант доступен с рубашкой охлаждения




 Ghisa EN-GJL-250  
 Fonte EN-GJL-250  
 Hierro fundido EN-GJL-250

 Cast Iron EN-GJL-250  
 Grauguss EN-GJL-250  
 Чугун EN-GJL-250

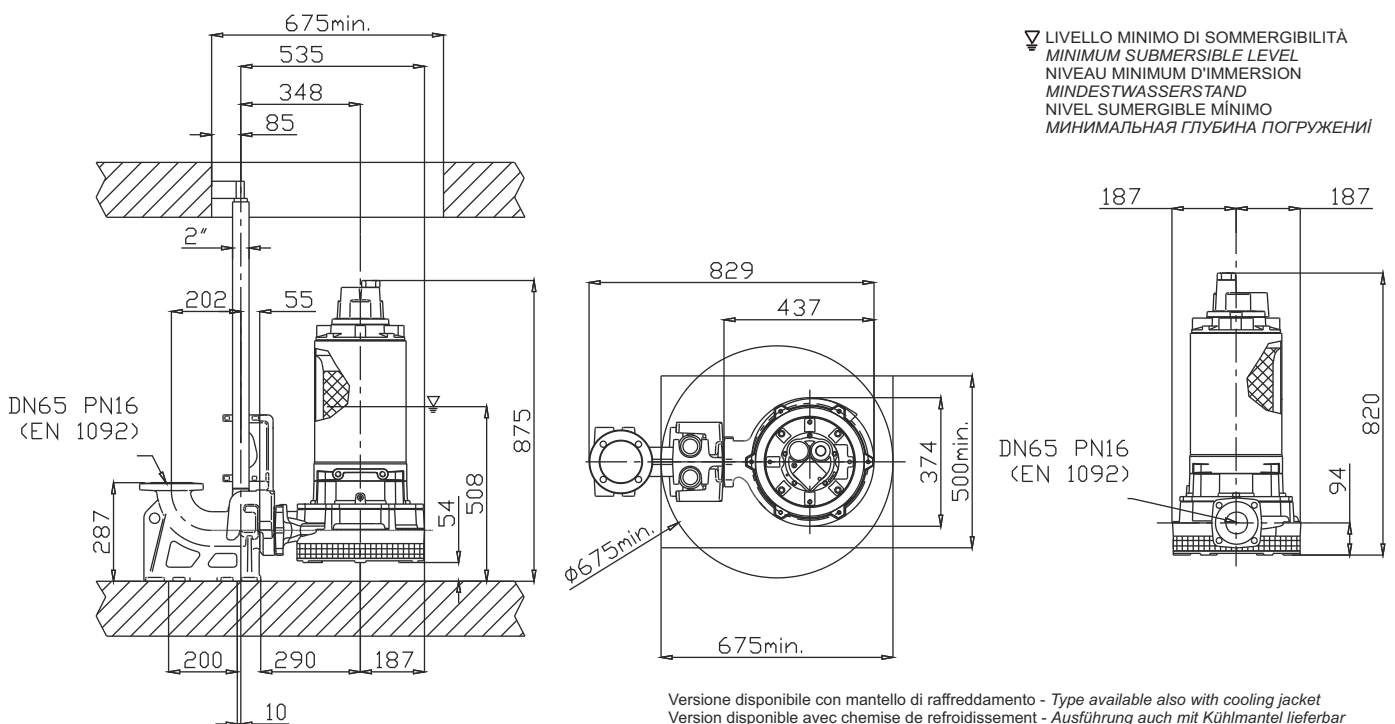
Curva caratteristica - Performance curve - Courbe caractéristique  
 Kennlinie - Curva característica - Характеристическая кривая






Power supply	3ph 400/690V 50Hz
R.P.M.	2850
Free passage (mm)	10
Discharge (mm)	DN 65
Max Weight (Kg)	205

Curve N°	Code	Type	MOTOR			ATEX code 
			Rated power P2 (kW)	Rated current I (A)	Starting current Is (A)	
1	7000213	G213R4D2-L10AA2	16,6	29,8	176	7007100
2	7006259	G213R4D4-L10AA2	14,9	26,8	158	7007102

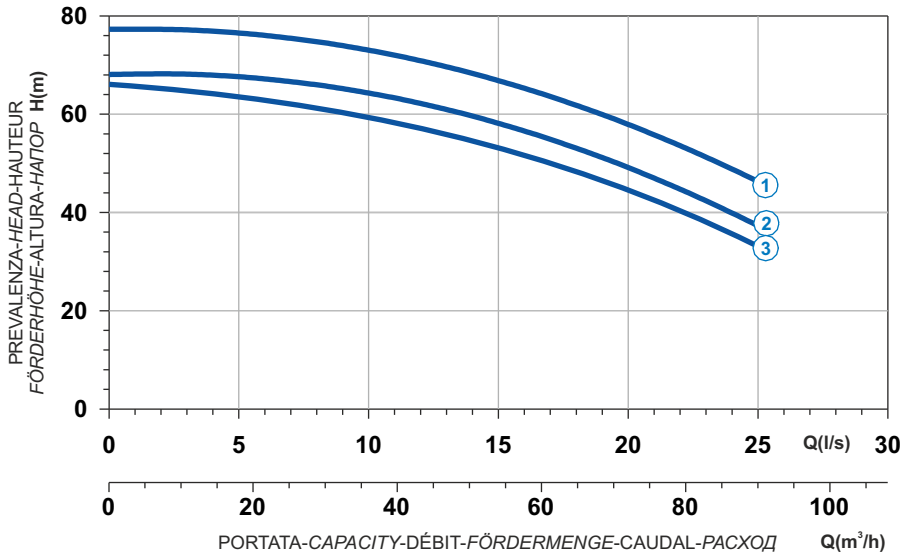
### Dimensioni - Dimensions - Dimensions - Abmessungen - Dimensiones - Габариты (mm)



 Ghisa EN-GJL-250  
 Fonte EN-GJL-250  
 Hierro fundido EN-GJL-250


 Cast Iron EN-GJL-250  
 Grauguss EN-GJL-250  
 Чугун EN-GJL-250

**Curva caratteristica - Performance curve - Courbe caractéristique**  
**Kennlinie - Curva característica - Характеристическая кривая**

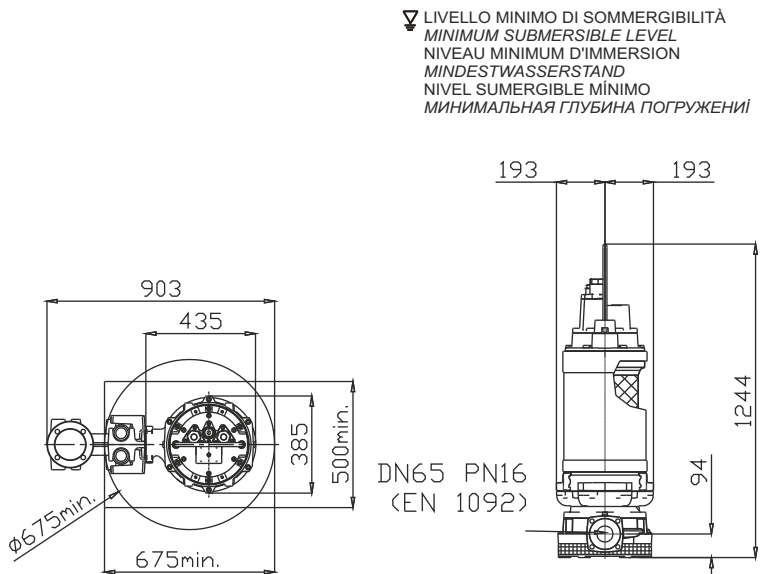
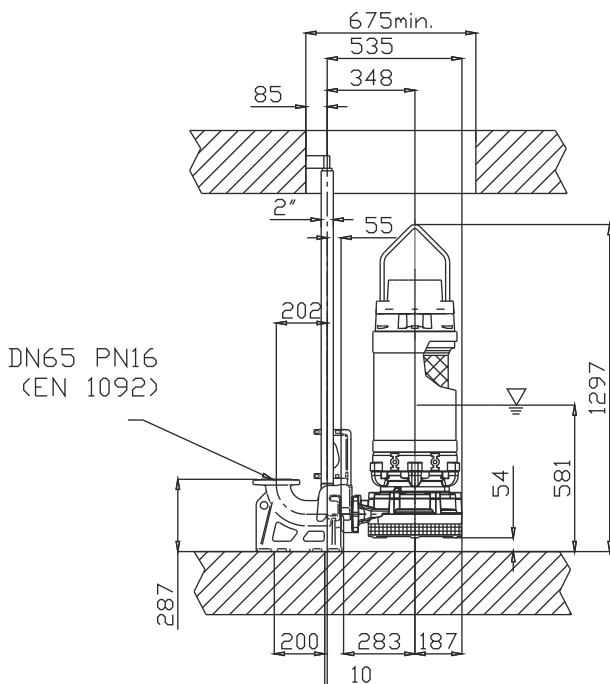


D

Power supply	3ph 400/690V 50Hz
R.P.M.	2850
Free passage (mm)	10
Discharge (mm)	DN 65
Max Weight (Kg)	350

Curve N°	Code	Type	MOTOR			ATEX code 
			Rated power P2 (kW)	Rated current I (A)	Starting current Is (A)	
1	7002213	G216R4D1-L10AA2	27	46,9	277	7007622
2	7002691	G216R4D2-L10AA2	25,1	43,6	257	7007557
3	7002706	G216R4D3-L10AA2	22,4	38,9	230	7007258

**Dimensioni - Dimensions - Dimensions - Abmessungen - Dimensiones - Габариты (mm)**



Versione disponibile con mantello di raffreddamento - Type available also with cooling jacket  
 Version disponible avec chemise de refroidissement - Ausführung auch mit Kühlmantel lieferbar  
 Disponible también con camisa de refrigeración - Вариант доступен с рубашкой охлаждения