



SpeedFace-V3LM1

Linux-Based Hybrid-Biometric Access Control & Time and Attendance Terminal with Visible Light Facial Recognition



Facial Recognition



RFID



Fingerprint



QR Code



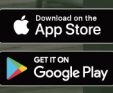
IP65 dust & waterproof rating

Compatible with

ZKBio CVAccess

Compatible with

ZKBio Zlink



SpeedFace-V3LM1 Series

SpeedFace-V3LM1 is an efficient Linux-based access control terminal, utilizing visible light technology for a comprehensive security management.

This terminal provides dual authentication methods, including facial recognition and fingerprint verification. Also, SpeedFace-V3LM1 is equipped with an ultimate anti-spoofing algorithm for facial recognition against all types of fake photos and videos attack.

Additionally, there are different versions of SpeedFace-V3LM1 to satisfy your needs. SpeedFace-V3LM1 [QR] comes with a QR code module, while the SpeedFace-V3LM1 [RFID] supports RFID cards verification function. The USB facial recognition extension reader KF1000-U is compatible with SpeedFace-V3LM1, offering a two-way verification and facial recognition access control management.

SpeedFace-V3LM1 series is also compatible with ZKBio CVAccess and ZKBio Zlink Mobile APP & ZKBio Zlink-Web when switching to BEST protocol.

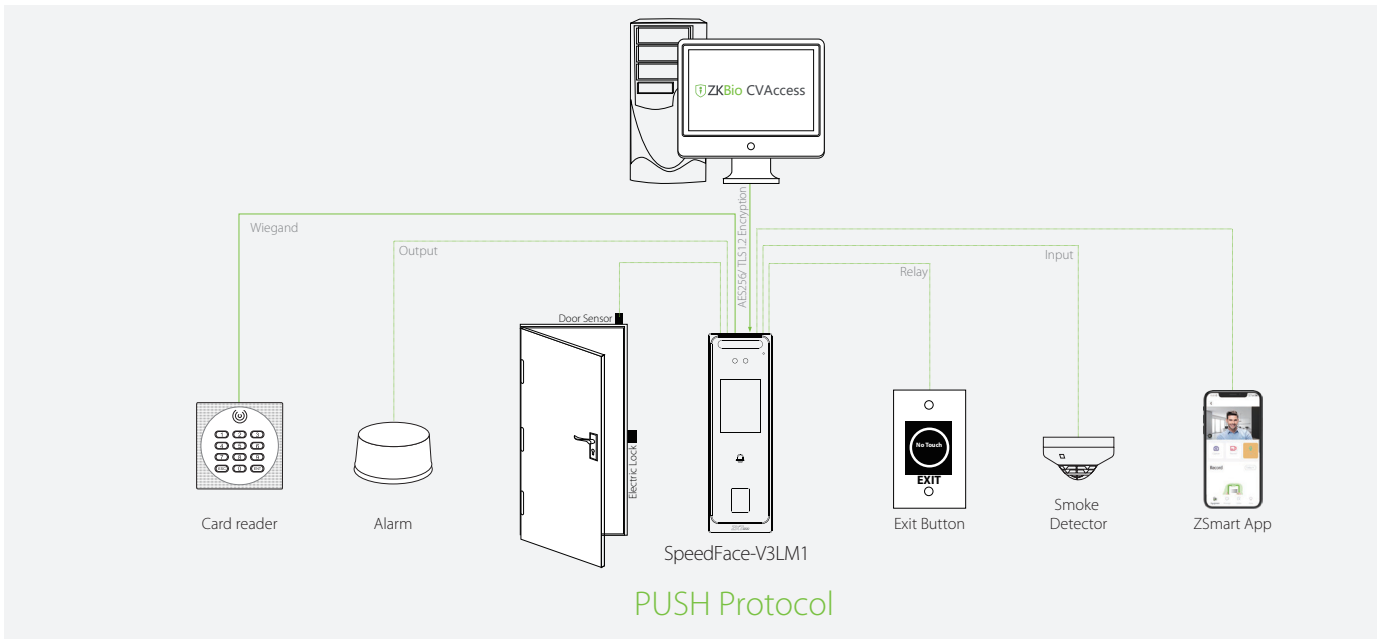
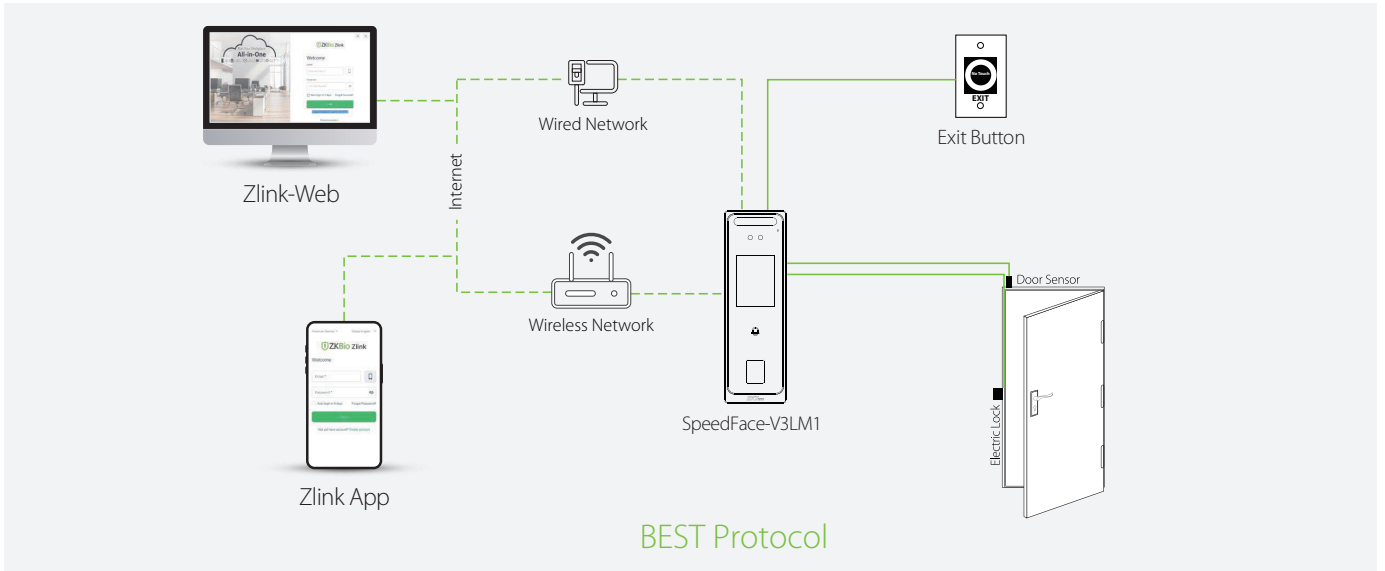
Features

- An IP65 protection rating with waterproof and dustproof, can fully operate under extreme weather
- Multiple authentication methods: facial recognition, fingerprint, scramble QR code and RFID cards verification
- Available card modules: 125kHz ID card / 13.56MHz IC card
- Hidden supplement light design with adjustable brightness
- On board web server for system configuration
- High capacity for necessary record storage. Offers 200,000 transaction logs (Facial templates: 500 / Fingerprint capacity: 3,000 / RFID card capacity: 3,000)

Specifications

Model	SpeedFace-V3LM1
Display	2.4-inch touch Screen(240*320)
Camera	Binocular Camera@ 1MP
Operation System	Linux
Hardware	1.2GHz Dual Core CPU 256MB RAM/512MB ROM 1MP Binocular Camera ; Adjustable LED Supplement Light
Authentication Method	Fingerprint / Face / Card / Password (Virtual Keypad)
Fingerprint Template Capacity	3,000 (1:N) (Optional: 5,000) 3,000 (1:1) (Optional: 5,000)
Face Template Capacity	500 (1:N) (Optional: 1,500) 500 (1:1) (Optional: 1,500)
Card Capacity	3,000 (1:N) (Optional: 10,000) 3,000 (1:1) (Optional: 10,000)
Transaction Capacity	200,000
Biometric Verification Speed	less than 1 sec (Facial Recognition)
Touchless Biometric Recognition Distance	0.5m to 2m (Facial Recognition)
False Acceptance Rate (FAR) %	FAR ≤ 0.01% (Visible Light Facial Recognition) FAR ≤ 0.0001% (Fingerprint; ZKFingerprint V10.0)
False Rejection Rate (FRR) %	FRR ≤ 0.02% (Visible Light Facial Recognition) FRR ≤ 0.01% (Fingerprint: ZKFingerprint V10.0)
Biometric Algorithm	ZKFace 3.5 ZKFingerprint V10.0
Card Type	ID Card@125 kHz (Optional) IC Card@13.56 MHz (Optional)
QR Code	QR code, Bar code, PDF417(Optional), Data matrix(Optional), MicroPDF417(Optional), Aztec(Optional)
Communication	TCP/IP *1, Wi-Fi(Optional), Wiegand Input *1, Wiegand Output *1, RS485: ZKTeco RS485*1, Auxiliary Input, Electric Lock*1, Door Sensor*1, Exit Button*1, Alarm*1, Doorbell*1,
Standard Functions	ADMS, DST, 14-digit User ID, Access Levels, Groups, Holidays, Anti passback, Record Query, Tamper Switch Alarm, Multiple Verification Methods
Power Supply	12V 3A
Operating Temperature	-5°C to 45°C
Operating Humidity	10% to 90% RH (Non-condensing)
Dimensions	188x60x21 mm (L*W*H)
Gross Weight	0.8kg
Net Weight	0.3kg
Supported Software	Software: ZKBio CVAccess Mobile App: ZKBio Zlink / ZSmart Cloud Service: ZKBio Zlink
Installation	Wall-mount (Compatible with Single Gang-Box)
Ingress Protection Rating	IP65
Certifications	ISO14001, ISO9001, CE, FCC

Configuration



Dimensions (mm)

