

## LITHIUM IRON PHOSPHATE (LIFEPO4) BATTERY LP1500 Series

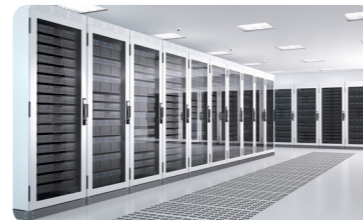
0.64~5.12KWH

The Must LP1500 SERIES LiFePO4 battery is fit for E-mobility, Energy Storage System, Defense & Security, telecom outdoor applications, renewable energy systems, and other harsh environment applications.



- 6000 cycles @ 80% DOD, 25 °C for effectively lower total of ownership cost.
- Safe, reliable and long life
- Support series or parallel connection
- Battery Management System (BMS) is incorporated against abuse.
- Superior charge/discharge efficiency
- Low maintenance batteries with stable chemistry.
- Extreme heat tolerance
- Lithium batteries provide more Wh/Kg while also being up to 1/3 the weight of its SLA equivalent.
- Support Bluetooth and APP to view battery information (optional)

### Application



Technical Data		LP15-1250	LP15-12100	LP15-12200	LP15-2450	LP15-24100	LP15-24200
Nominal Voltage		12.8V			25.6V		
Nominal Capacity		50Ah	100Ah	200Ah	50Ah	100Ah	200Ah
Nominal energy		640Wh	1280Wh	2560Wh	1280Wh	2560Wh	5120Wh
Life Cycles		6000 cycles @ 80% DOD, 25°C					
Recommended Charge Voltage		14.6V			29.2V		
Recommended Charge Current		20A					
End Of Discharge Voltage		10V			20V		
Standard Method	Charge	10A	20A	40A	10A	20A	40A
	Discharge	25A	50A	100A	25A	50A	100A
Maximum Continuous Current	Charge	25A	50A	100A	50A	60A	100A
	Discharge	50A	100A	100A	100A	100A	100A
BMS Cut-Off Voltage	Charge	15.4 V (3.85V/Cell)			30.8 V (3.85V/Cell)		
	Discharge	9.2 V (2s) (2.3V/Cell)			18.4 V (2s) (2.3V/Cell)		
Temperature	Charge	0 ~ 45°C					
	Discharge	-20 ~ 55°C					
Storage Temperature		-5~35°C					
Shipment voltage		≥12.8V			≥25.6V		
Case Material		ABS+PC					
Machine Dimension (H*W*D) (mm)		260*167*210	339*185*218	502*186*243	522*240*218	502*186*243	522*240*218
Package Dimension (W*H*D) (mm)		carton box /	385*230*260	520*215*280	/	520*215*280	545*285*288
N.W (kg)		7.5	12	21	22.5	20	37
G.W (kg)		carton box /	13	22	/	21	38
Charge Retention And Capacity Recovery Capability		Standard charge the battery, and then put aside at room temperature for 28d or 55°C for 7d, Charge retention rate≥90%, Recovery rate of charge≥90%					
Warranty		5 years					
Certification & Standards		CE-EMC (EN 61000-6-3+A1+AC EN IEC 61000-6-1); UN38.3/ MSDS					

\* Variations in dimensions and weights may occur due to production batches.