

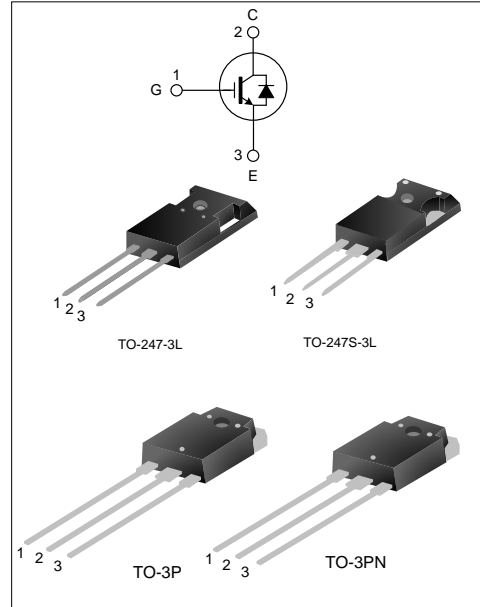
60A, 600V FIELD STOP IGBT

DESCRIPTION

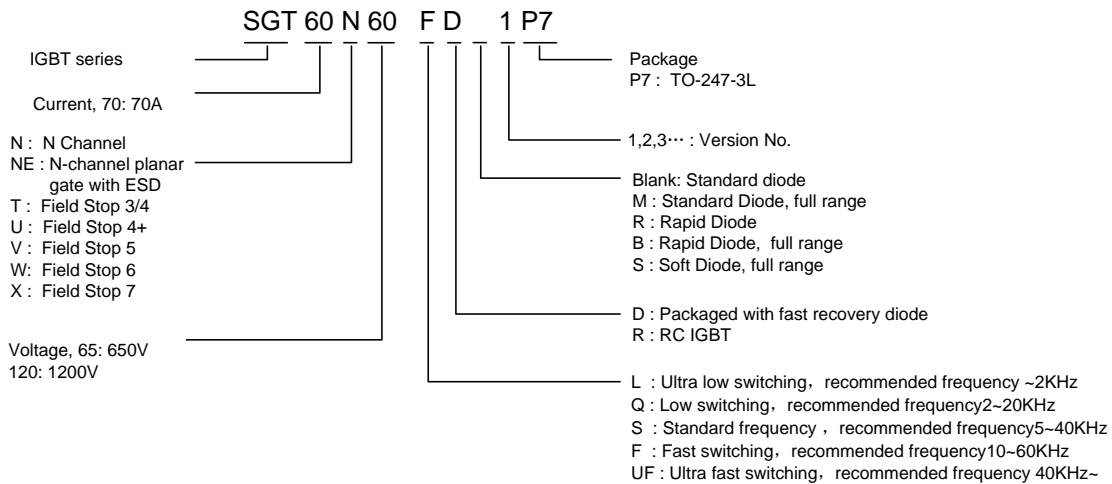
SGT60N60FD1PN/P7/PS/PT adopts Field Stop IGBT technology, offer the optimum performance for induction Heating, UPS, SMPS and PFC application.

FEATURES

- ◆ 60A, 600V, $V_{CE(sat)(typ.)}=2.2V@I_C=60A$
- ◆ Low conduction loss
- ◆ Fast switching
- ◆ High input impedance



NOMENCLATURE



ORDERING INFORMATION

Part No.	Package	Marking	Hazardous Substance Control	Packing Type
SGT60N60FD1PN	TO-3P	60N60FD1	Pb free	Tube
SGT60N60FD1P7	TO-247-3L	60N60FD1	Pb free	Tube
SGT60N60FD1PS	TO-247S-3L	60N60D1	Pb free	Tube
SGT60N60FD1PT	TO-3PN	60N60FD1	Pb free	Tube



ABSOLUTE MAXIMUM RATINGS (T_C = 25°C UNLESS OTHERWISE NOTED)

Characteristics		Symbol	Ratings	Units
Collector to Emitter Voltage		V _{CE}	600	V
Gate to Emitter Voltage		V _{GE}	±20	V
Collector Current	T _C =25°C	I _C	120	A
	T _C =100°C		60	
Pulsed Collector Current		I _{CM}	180	A
Maximum Power Dissipation (T _C =25°C)		P _D	321	W
Operating Junction Temperature		T _J	-55~+175	°C
Storage Temperature Range		T _{stg}	-55~+175	°C

THERMAL CHARACTERISTICS

Characteristics	Symbol	Ratings	Units
Thermal Resistance, Junction to Case(IGBT)(TO-3P)	R _{θJC}	0.39	°C/W
Thermal Resistance, Junction to Case(FRD)(TO-3P)	R _{θJC}	1.10	°C/W
Thermal Resistance, Junction to Ambient(TO-3P)	R _{θJA}	40	°C/W

ELECTRICAL CHARACTERISTICS OF IGBT(T_C=25°C, UNLESS OTHERWISE NOTED)

Characteristics	Symbol	Test conditions	Min.	Typ.	Max.	Units
Collector to Emitter Breakdown Voltage	BV _{CE}	V _{GE} =0V, I _C =250uA	600	--	--	V
C-E Leakage Current	I _{CEs}	V _{CE} =600V, V _{GE} =0V	--	--	200	μA
G-E Leakage Current	I _{GES}	V _{GE} =20V, V _{CE} =0V	--	--	±400	nA
G-E Threshold Voltage	V _{GE(th)}	I _C =250uA, V _{CE} =V _{GE}	4.0	5.0	6.5	V
Collector to Emitter Saturation Voltage	V _{CE(sat)}	I _C =60A, V _{GE} =15V	--	2.2	2.7	V
		I _C =60A, V _{GE} =15V, T _C =125°C	--	2.6	--	V
Input Capacitance	C _{ies}	V _{CE} =30V	--	2850	--	pF
Output Capacitance	C _{oes}	V _{GE} =0V	--	294	--	
Reverse Transfer Capacitance	C _{res}	f=1MHZ	--	85	--	
Turn-On Delay Time	T _{d(on)}	V _{CE} =400V I _C =60A R _g =10Ω	--	36	--	ns
Rise Time	T _r		--	142	--	
Turn-Off Delay Time	T _{d(off)}		--	193	--	
Fall Time	T _f		--	136	--	
Turn-On Switching Loss	E _{on}	V _{GE} =15V	--	3.72	--	mJ
Turn-Off Switching Loss	E _{off}	Inductive Load,	--	1.77	--	
Total Switching Loss	E _{st}		--	5.49	--	
Total Gate Charge	Q _g	V _{CE} =400V, I _C =60A, V _{GE} =15V	--	179	--	nC
Gate to Emitter Charge	Q _{ge}		--	23	--	
Gate to Collector Charge	Q _{gc}		--	100	--	

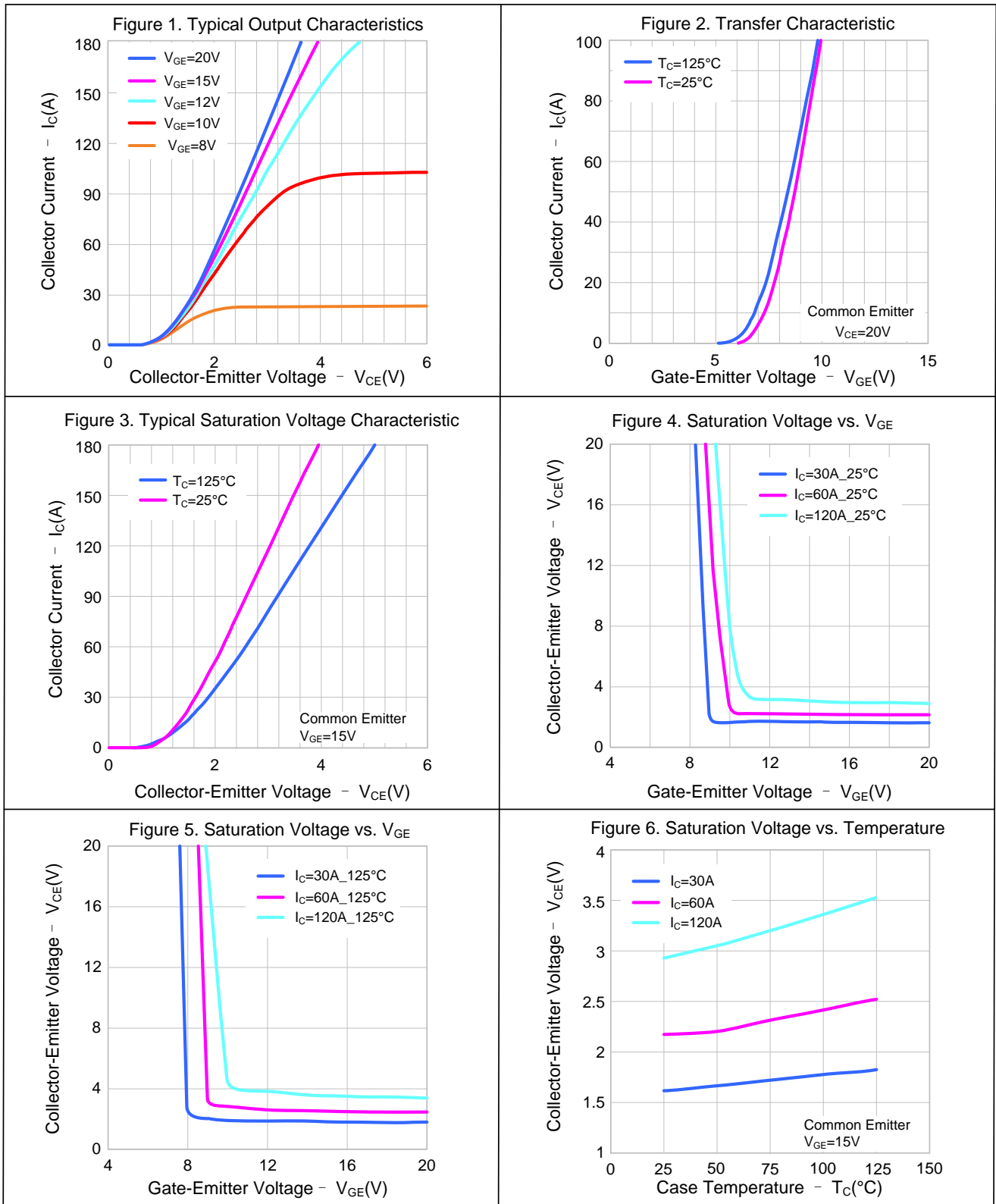


ELECTRICAL CHARACTERISTICS OF FRD(T_C=25°C UNLESS OTHERWISE NOTED)

Characteristics	Symbol	Test conditions	Min.	Typ.	Max.	Units
Diode Forward Voltage	V _{FM}	I _F =30A, T _C =25°C	--	1.9	2.6	V
		I _F =30A, T _C =125°C	--	1.5	--	
Diode Reverse Recovery Time	T _{rr}	I _{ES} =30A, dI _{ES} /dt=200A/μs	--	38	--	ns
Diode Reverse Recovery Charge	Q _{rr}	I _{ES} =30A, dI _{ES} /dt=200A/μs	--	85	--	nC

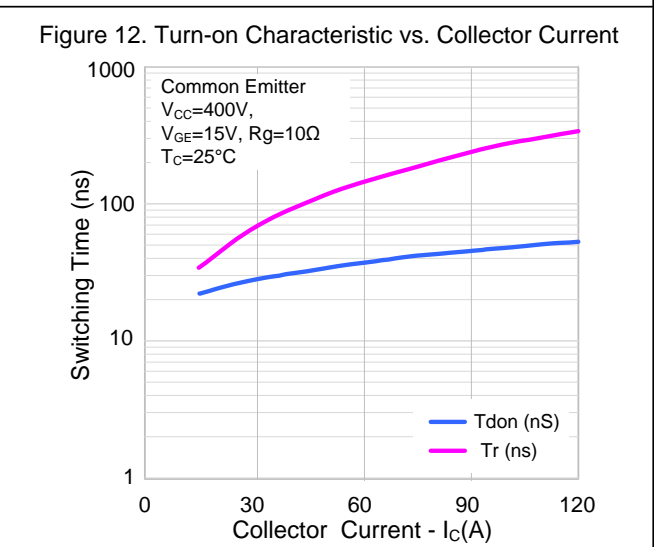
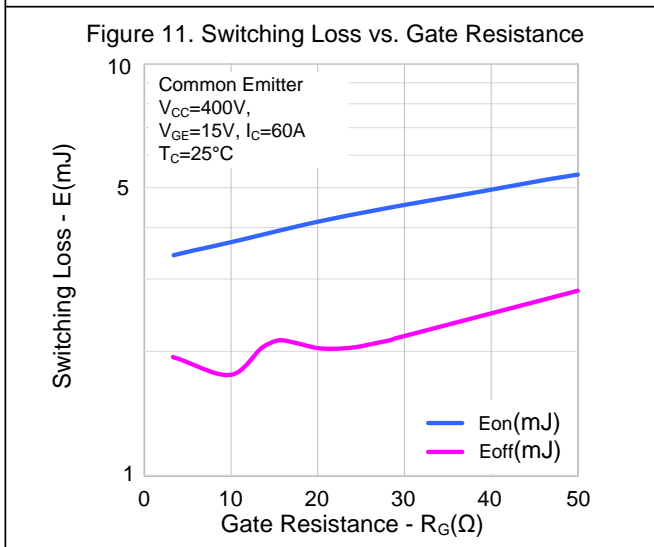
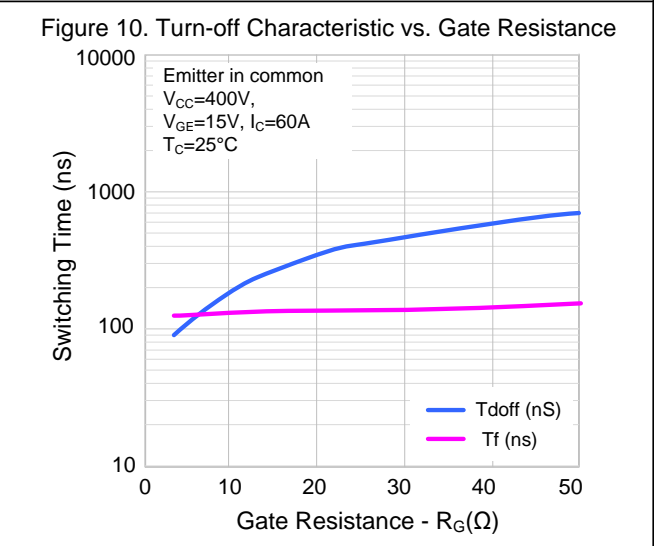
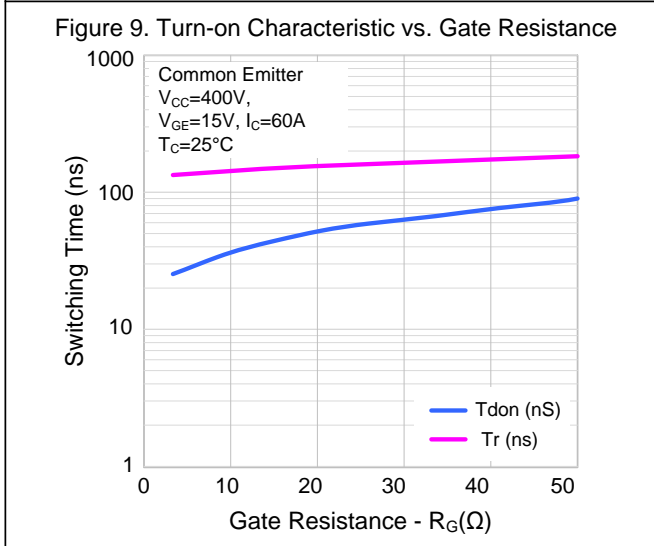
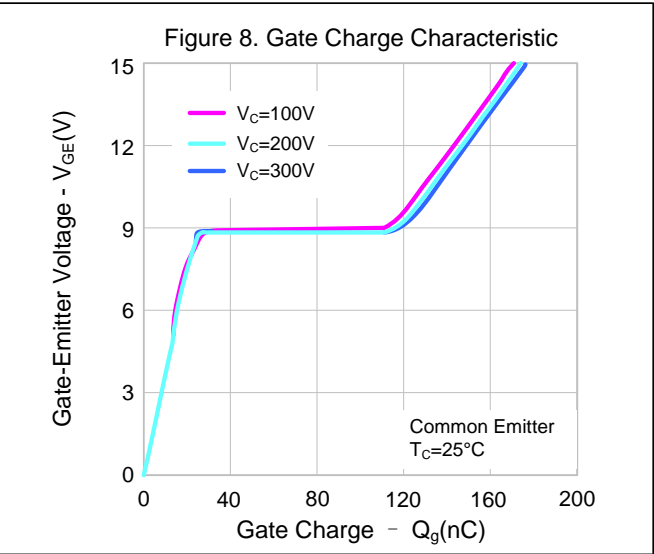
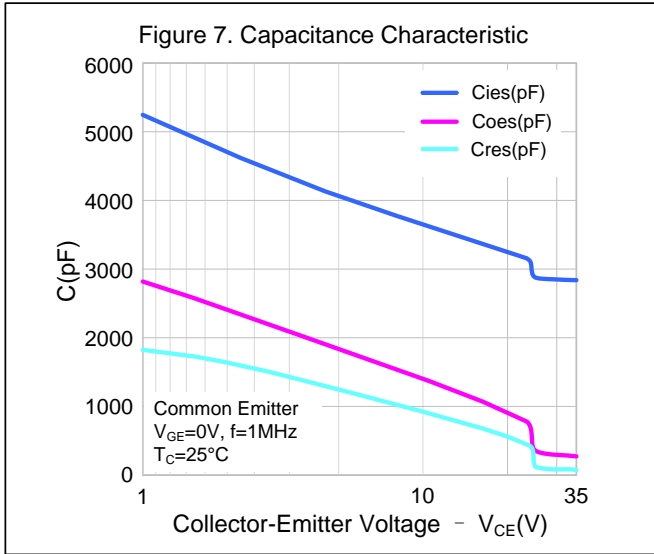


TYPICAL CHARACTERISTICS CURVE





TYPICAL CHARACTERISTICS CURVE (CONTINUED)





TYPICAL CHARACTERISTICS CURVE (CONTINUED)

Figure 13. Turn-off Characteristic vs. Collector Current

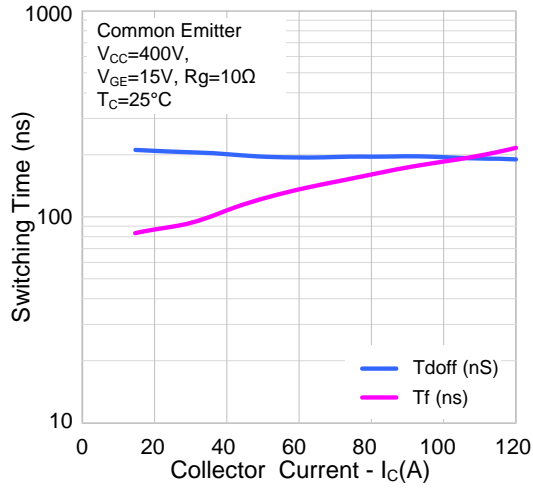


Figure 14. Switching Loss vs. Collector Current

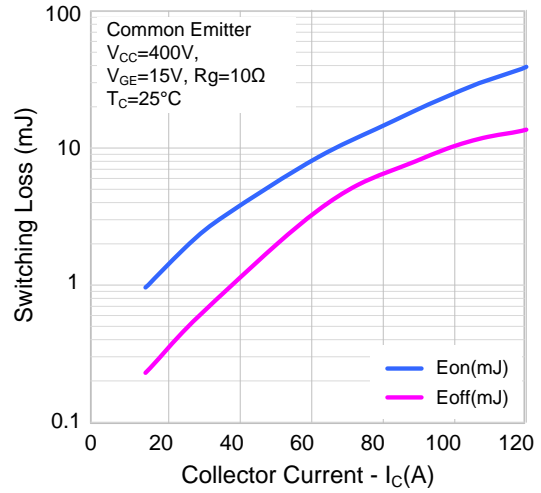


Figure 15. Forward Characteristic

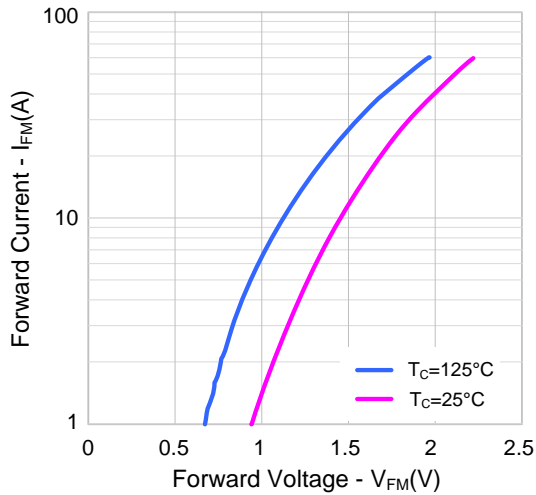


Figure 16. Reverse Recovery Time vs. Forward Current

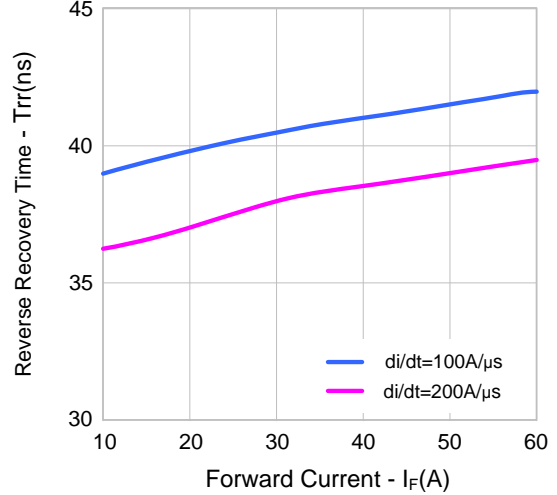


Figure 17. Reverse Recovery Charge vs. Forward Current

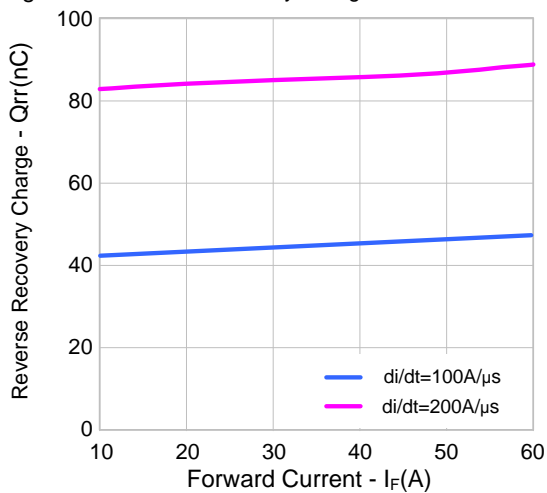
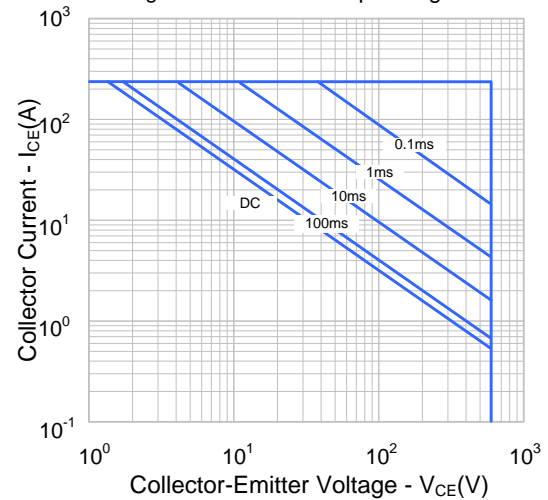


Figure 18. Max. Safe Operating Area





TYPICAL CHARACTERISTICS CURVE (CONTINUED)

Figure 19. Square Wave Impedance Simulation (IGBT)

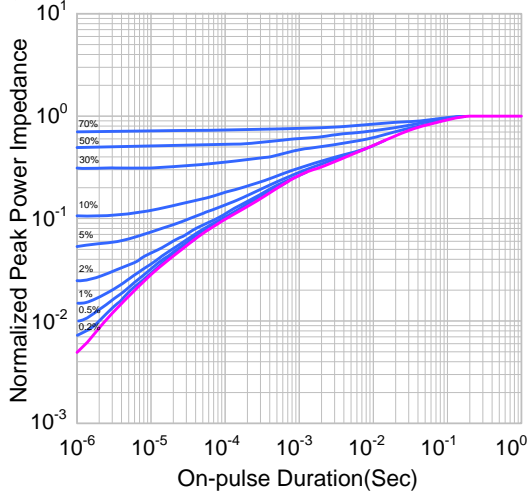
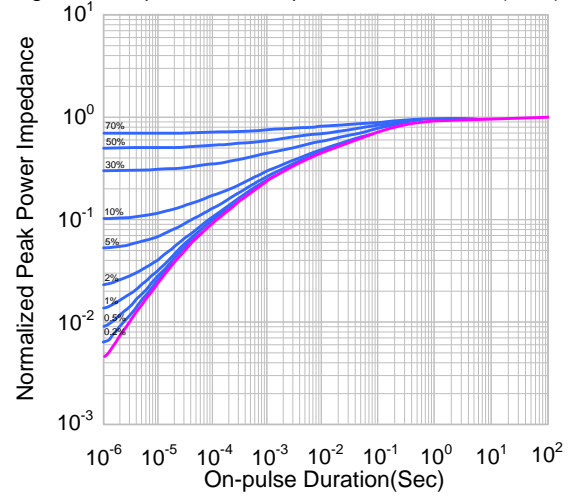


Figure 20. Square Wave Impedance Simulation (FRD)





PACKAGE OUTLINE

TO-3P Unit: mm

SYMBOL	MILLIMETER		
	MIN	NOM	MAX
A	4.4	—	5.2
C1	1.2	—	1.8
A1	1.2	—	2.0
b	0.7	1.0	1.3
b1	2.7	3.0	3.3
b2	1.7	2.0	2.3
D	15.0	15.5	16.0
C	0.4	0.6	0.8
F2	8.5	—	10.0
e	5.45 TYP		
L1	22.6	—	23.6
L	39.0	—	41.5
L2	19.5	—	21.0

TO-247-3L Unit: mm

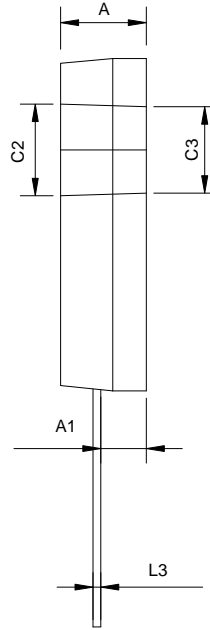
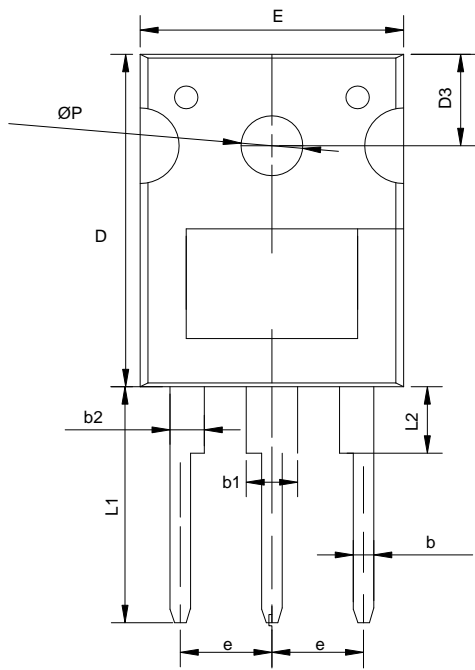
SYMBOL	MILLIMETER		
	MIN	NOM	MAX
A	4.80	5.00	5.20
A1	2.21	2.41	2.59
A2	1.85	2.00	2.15
b	1.11	—	1.36
b2	1.91	—	2.25
b4	2.91	—	3.25
c	0.51	—	0.75
D	20.80	21.00	21.30
E	15.50	15.80	16.10
E2	4.40	5.00	5.20
e	5.44 BSC		
L	19.72	19.92	20.22
L1	—	—	4.30
Q	5.60	5.80	6.00



PACKAGE OUTLINE(CONTINUED)

TO-247S-3L

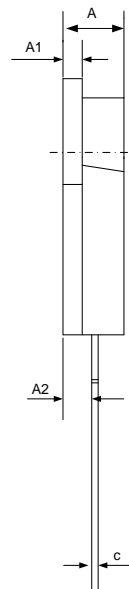
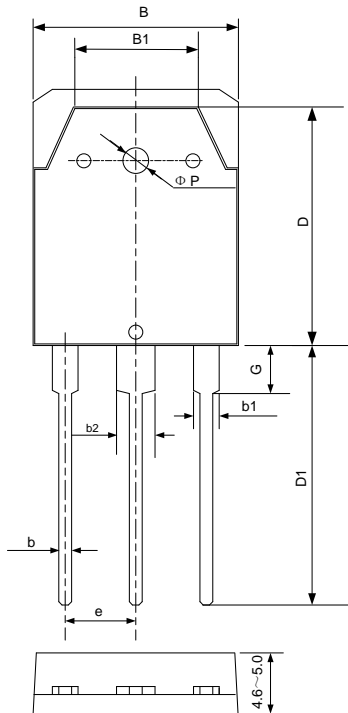
Unit: mm



SYMBOL	MILLIMETER		
	MIN	NOM	MAX
A	4.80	5.00	5.20
A1	2.30	2.50	2.70
b	1.10	1.20	1.30
b1	2.90	3.10	3.30
b2	1.90	2.10	2.30
c2	5.50	6.00	6.50
c3	4.95	5.10	5.25
D	19.00	20.00	21.00
D3	5.30	5.50	5.70
e	5.34	5.44	5.54
E	15.40	15.60	15.80
L1	14.40	14.60	14.80
L2	3.85	4.00	4.15
L3	0.35	0.50	0.65
ØP	3.40	3.60	3.80

TO-3PN

Unit: mm



SYMBOL	MILLIMETER		
	MIN	NOM	MAX
A	4.60	4.80	5.00
A1	1.30	1.50	1.70
A2	2.20	2.40	2.60
b	0.80	1.00	1.20
b1	1.80	2.00	2.20
b2	2.90	3.10	3.30
B	15.20	15.60	16.00
B1	9.10	9.30	9.50
c	0.50	0.60	0.70
D	18.30	18.50	18.70
D1	19.00	19.50	20.00
e	5.25	5.45	5.65
G	2.80	3.00	3.20
ØP	3.00	3.20	3.40



Important notice :

- The instructions are subject to change without notice! Customers should obtain the latest relevant information before placing orders and should verify that such information is complete and current.
- Our products are consumer electronic products, and / or civil electronic products.
- When using our products, please do not exceed the maximum rating of the products, otherwise the reliability of the whole machine will be affected. There is a certain possibility of failure or malfunction of any semiconductor product under specific conditions. The buyer is responsible for complying with safety standards and taking safety measures when using our products for system design, sample and whole machine manufacturing, so as to avoid potential failure risk that may cause personal injury or property loss.
- It is strongly recommended to identify the trademark when buying our products. Please contact us if there is any question.
- When exporting, using and reselling our products, buyer must comply with the international export control laws and regulations of China, the United States, the United Kingdom, the European Union and other countries & regions.
- Product promotion is endless, our company will wholeheartedly provide customers with better products!
- Website: <http://www.silan.com.cn>

Part No.: SGT60N60FD1PN/P7/PS/PT

Document Type: Datasheet

Copyright: HANGZHOU SILAN MICROELECTRONICS CO.,LTD

Website: <http://www.silan.com.cn>

Rev.: 1.7

Revision History:

1. Add package outline of TO-3PN
-

Rev.: 1.6

Revision History:

1. Add package outline of TO-247S-3L
-

Rev.: 1.5

Revision History:

1. Modify Package stereogram and Important notice
-

Rev.: 1.4

Revision History:

1. Update the package outline of TO-247-3L
-

Rev.: 1.3

Revision History:

1. Modify the Max Value of Junction Temperature
-

Rev.: 1.2

Revision History:

1. Modify annotation of Fig.13
-

Rev.: 1.1

Revision History:

1. Modify the characteristics
-

Rev.: 1.0

Revision History:

1. First release
-
-