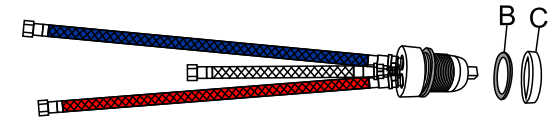
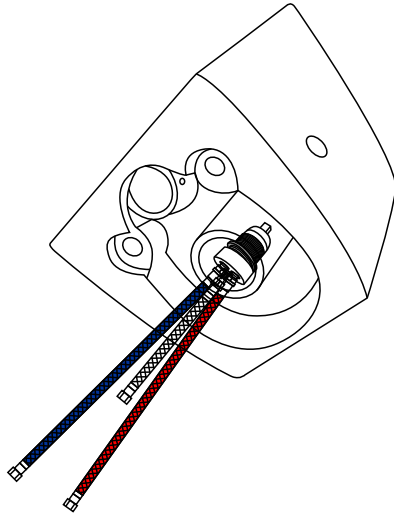


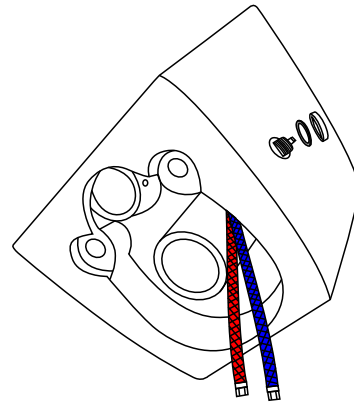
1. A Connect hot water pipe/cold water pipe/  
nozzle inlet pipe correspondingly.



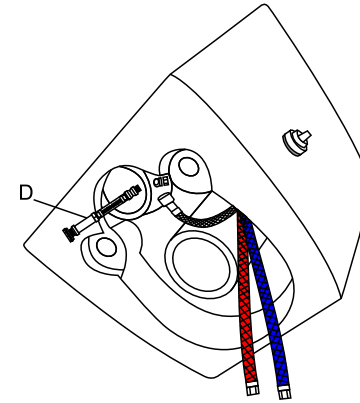
2. Unscrew A and remove  
a black rubber gasket (B+C)



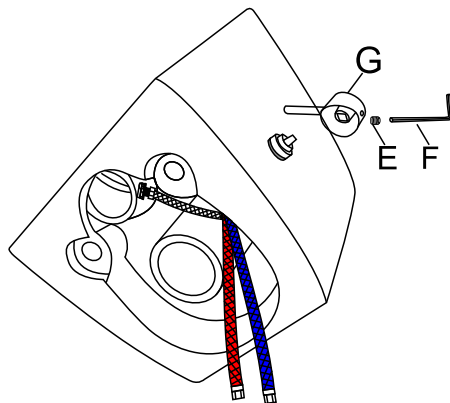
3. A passes through the side hole of the toilet.



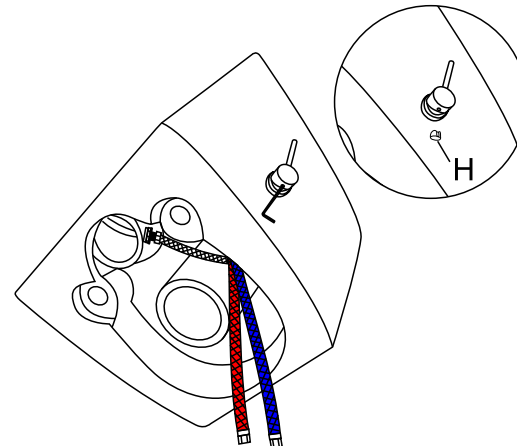
4. Install the black rubber gasket (B+C)  
and tighten it



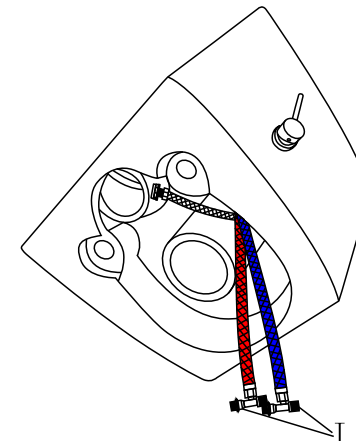
5. Tighten the nozzle water inlet pipe (D)  
after connecting it to the washing nozzle



6. Screw the screw (E) to the handle (G)  
with a 7-character wrench (F).

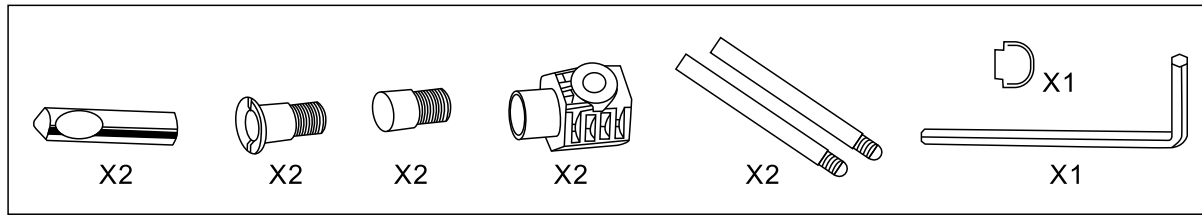


7. Install the handle (G) on A, tighten it with  
a 7-character wrench (F),  
and cover it with a decorative cover (H).



8. The inlet angle valve (I) one side connected  
with the cold/hot water pipe and  
another side connected water inlet pipe

# COMPONENTI



# INSTALLAZIONE

