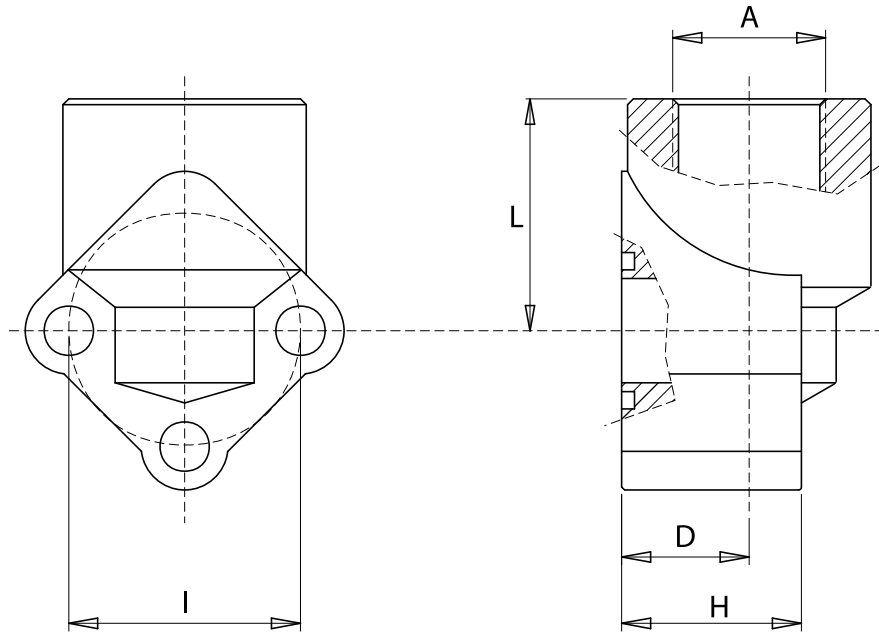


Materiale: alluminio
Material: aluminium



| Press. max bar | Tipo Type | Gruppo pompa Pump size | A BSP | I | D | H | L | N. fori Fixing holes | Viti Screws | O-Rings |
|----------------|-----------|------------------------|--------|-------|------|----|----|----------------------|-------------|---------|
| 180 | RP05-038 | 0.5 | 3/8" | 26 | 18 | 24 | 30 | 3 | M5x35 | 2056 |
| 180 | RP05-012 | 0.5 | 1/2" | 26 | 18 | 24 | 30 | 3 | M5x35 | 2056 |
| 180 | RP1-038 | 1 | 3/8" | 30 | 18 | 26 | 30 | 3 | M6x35 | 121 |
| 180 | RP1-012 | 1 | 1/2" | 30 | 18 | 26 | 30 | 3 | M6x35 | 121 |
| 180 | RP2-012 | 2 | 1/2" | 40 | 20 | 31 | 40 | 3 | M8x45 | 130 |
| 180 | RP2-034 | 2 | 3/4" | 40 | 20 | 31 | 40 | 3 | M8x45 | 130 |
| 180 | RP3-034 | 3 | 3/4" | 51÷56 | 26 | 43 | 46 | 3 | M10x60 | 4118 |
| 180 | RP3-100 | 3 | 1" | 51÷56 | 26 | 43 | 46 | 3 | M10x60 | 4118 |
| 180 | RP35-114 | 3.5 | 1 1/4" | 62 | 33.5 | 17 | 57 | 2 | M12x35 | 4143 |
| 180 | RP4-112 | 4 | 1 1/2" | 72.5 | 38 | 17 | 64 | 2 | M12x35 | 4175 |

Esempio codice di ordinazione - Ordering example

RP 1 - 012 - M

Raccordo
Coupling

Viti metriche, rondelle, O-Rings
Metrical screws, washers, O-Rings
(zincate bianche - white zinc plated)