

E1 Zoom

Reolink E1 Zoom is also doing well at night, with 10pcs IR LEDs to cover up to 40ft in low-light conditions. It catches a glimpse of your house in Super HD. Or zoom in to see the details of what you care, without image impairment.

1. Specs



1	Daylight Sensor
2	10 IR LEDs
3	Lens
4	Status LED
5	Built-in Mic
6	Reset Button
7	Micro SD Card Slot



1	Speaker
2	Power

Status Light

Status Light	Camera Status
Solid Blue	Camera is starting up/ WiFi connection succeeded
Blinking Blue	WiFi is not configured/ WiFi connection failed

2. Setup and Install

Set up the Camera

What's in the Box

Note: The package content may vary and update with different version and platforms, please take the below information only for a reference. And the actual package content are subject to the latest information on the product selling page.

E1 Zoom



E1 Zoom *1



Mounting Plate *1



Quick Start Guide*1



Power Adapter*1



Mounting Template *1



Surveillance Sticker*1



Pack of Screws*1

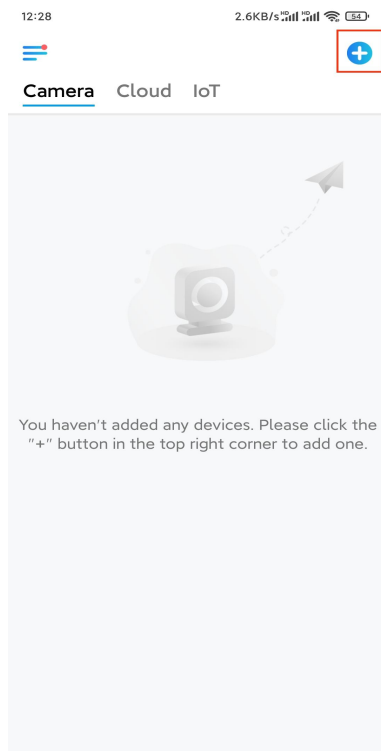


Reset Needle*1

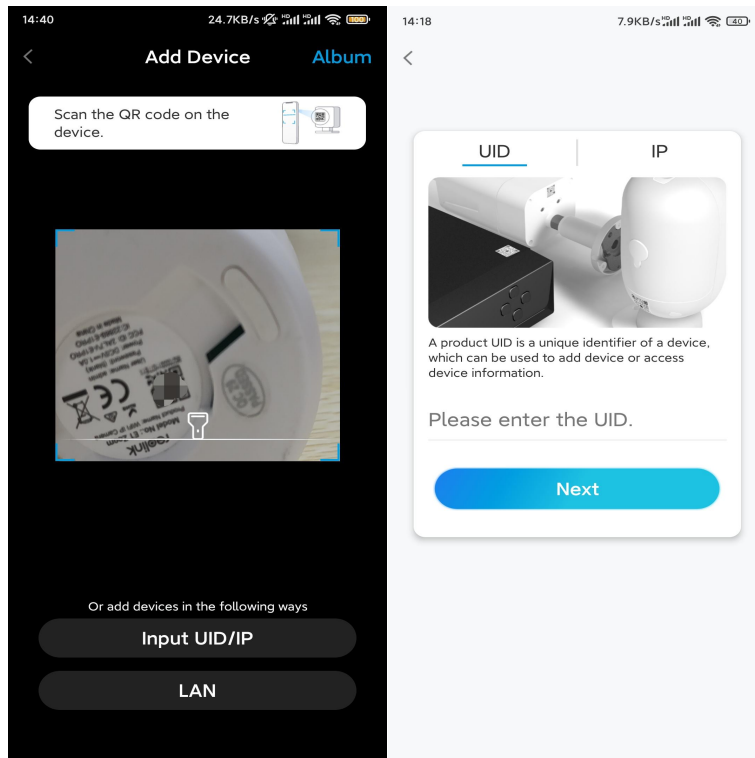
Set up the Camera on the App

You may follow the steps below to set up the camera.

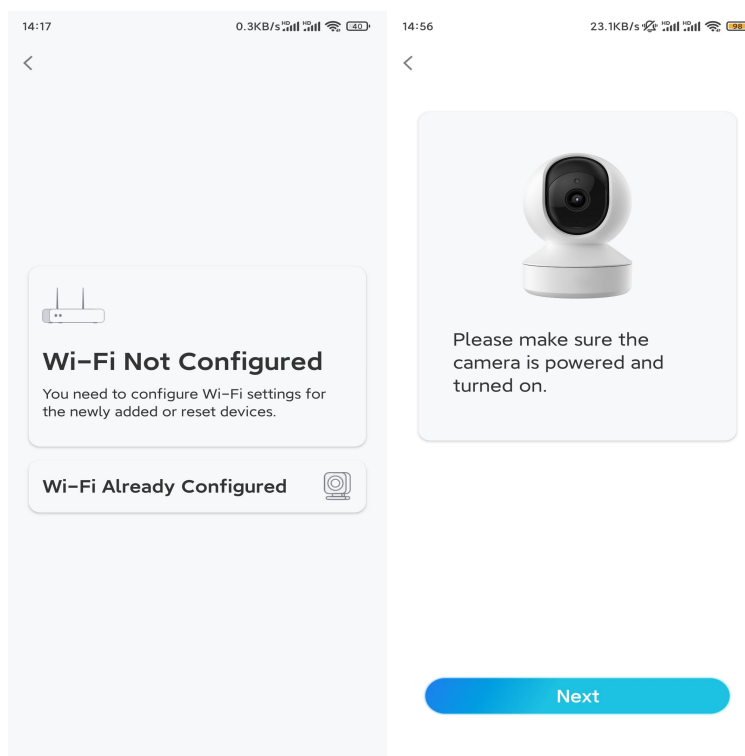
Step 1. Tap the icon  in the top right corner to start the initial setup.



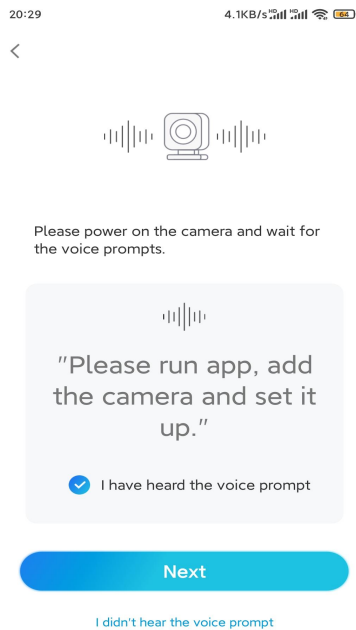
Step 2. Scan the QR code on the back of the camera. You could also tap **Input UID/IP** and enter the UID (16-digit characters under the QR code of the camera). Then tap **Next**.



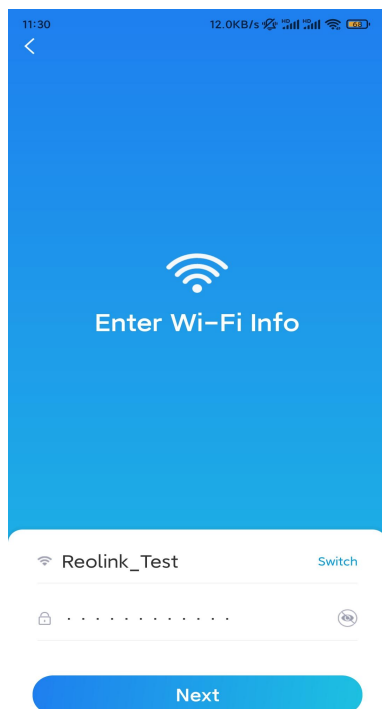
Step 3. Tap **Wi-Fi Not Configured**. Make sure your camera stays powered on and tap **Next**.



Step 4. If you hear the voice prompts as shown in the picture or a repeated ding sound, tick correspondingly and tap **Next**.



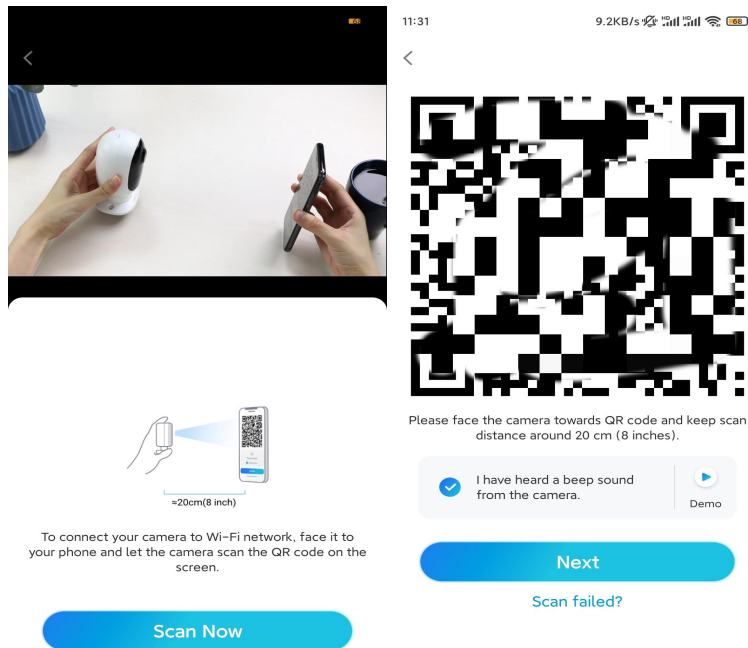
Step 5. Enter the WiFi password of the selected WiFi network and tap **Next**.



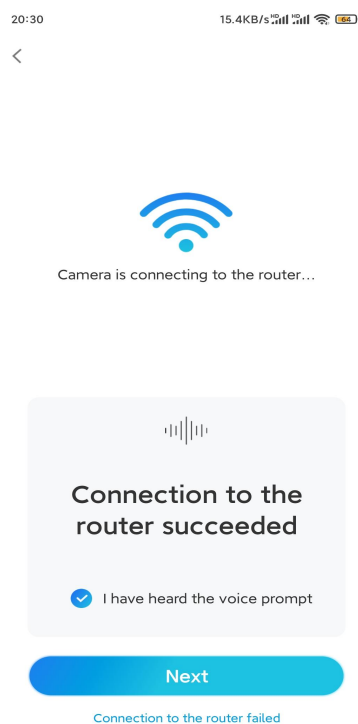
Note: E1 Zoom support a 2.4 GHz or 5GHz WiFi network of your choice.

Step 6. Tap **Scan Now**. Place the QR code on your phone in front of the camera's lens at a distance of about 20 cm (8 inches) and let the camera scan the QR code.

After hearing a beep sound, tick correspondingly and tap **Next**.

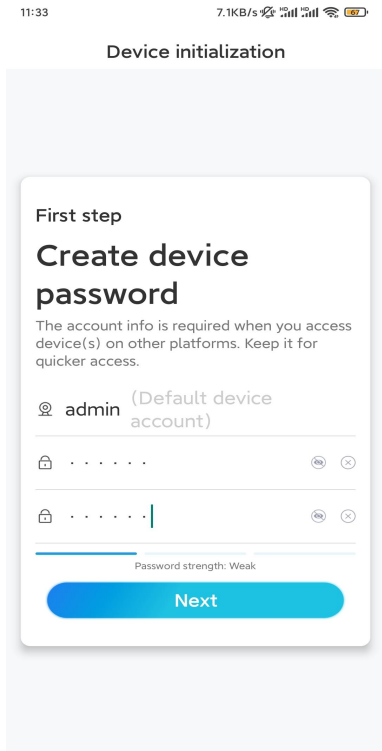


Step 7. Wait around 60 seconds for the camera to connect to the router. If you hear "connection to the router succeeded", tick correspondingly and tap **Next**.

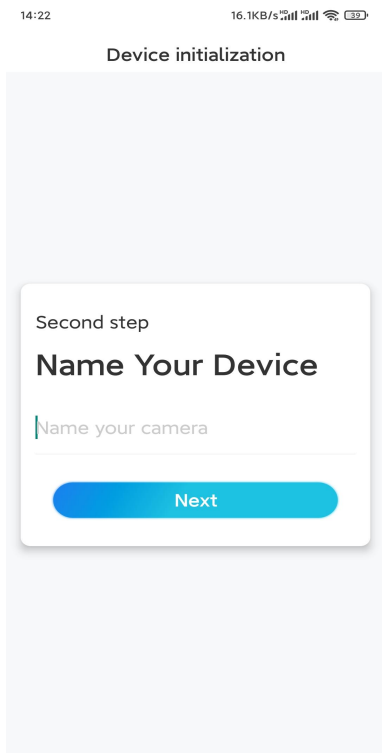


Note: If you heard the voice prompt "Connection to the router failed", please make sure you've entered the WiFi information correctly in the previous step.

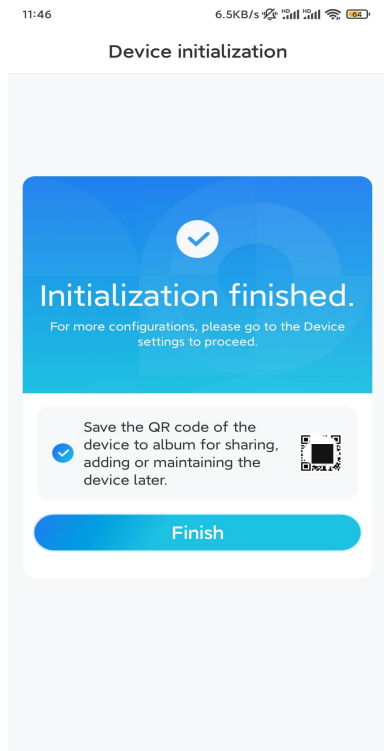
Step 8. Create the password for your camera. Then tap **Next**.



Step 9. Name your camera. Then tap **Next**.



Step 10. Initialization finished. You can start using your camera now.

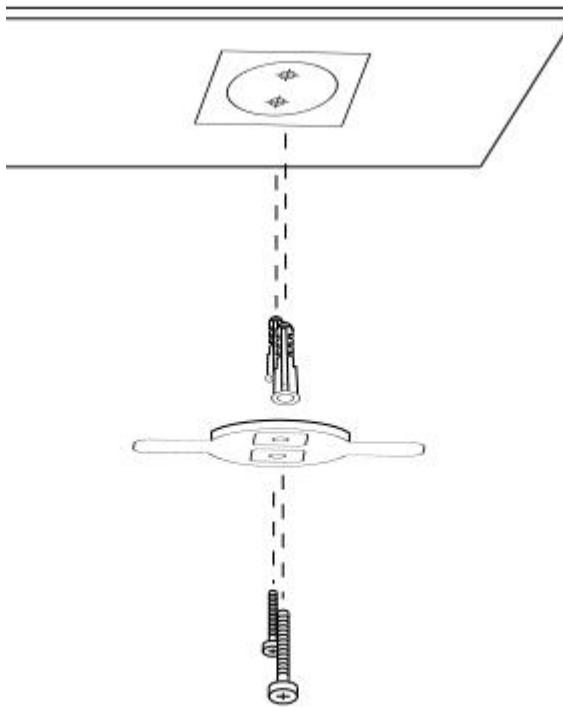


Install the Camera

Here is a guide on how to install the camera to the ceiling.

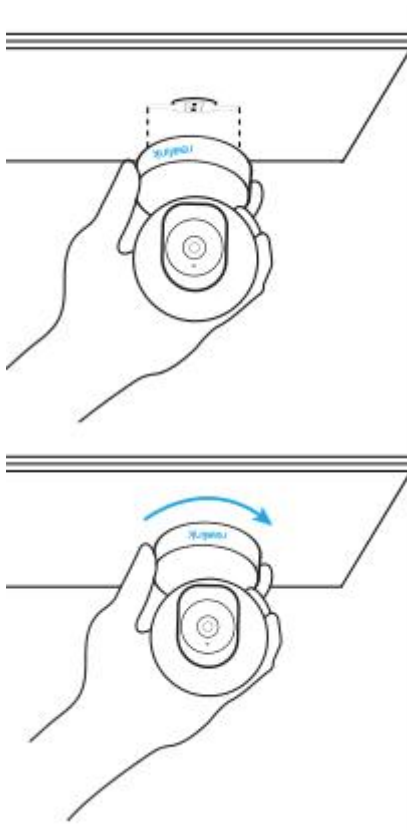
Step 1. Install the Mounting Plate.

- Drilling two screw holes on the wall according to the mounting hole template.
- Insert the two plastic anchors into the holes in the wall.
- Secure the base unit in place by tightening the screws into the plastic anchors.



Step 2. Attach the Camera.

Align the camera with the bracket, then turn the camera unit clockwise to lock it in position.



Notes:

- To remove it from the ceiling, turn the camera counterclockwise.

- In case your camera is mounted upside down, its picture shall be rotated as well. Please go to **Device Settings** > **Display** on Reolink App/Client and click **Flip Vertical** to adjust the image.