

RLC-842A

RLC-842A is equipped with person/vehicle detection and pet detection (beta) technology, and it can smartly discern the shapes of people, vehicles, and pets. Trivial objects' movements will be ignored so as to reduce false alarms. You can always get accurate alerts about important events.

1. Specs



1	Metal Aluminum Case
2	IR LEDs
3	High Definition Lens
4	Daylight Sensor



1	Power
2	Reset Button
3	Network
4	Waterproof Lid

2. Setup and Install

Set up the Camera

What's in the Box

Note: The package content may vary and update with different version and platforms, please take the below information only for a reference. And the actual package content are subject to the latest information on the product selling page.

RLC-842A



RLC-842A*1



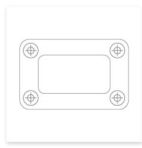
1m Network Cable*1



Quick Start Guide*1



Surveillance Sticker*1



Mounting Template *1



Pack of Screws*1

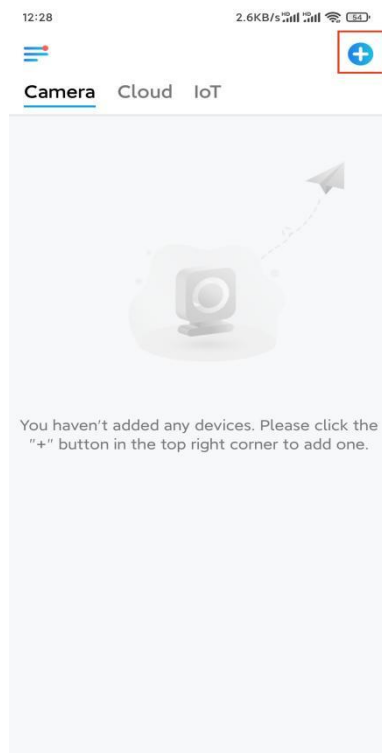


Waterproof Lid *1

Set up the Camera on the App

Here is a guide on how to initially set up the camera via Reolink App.

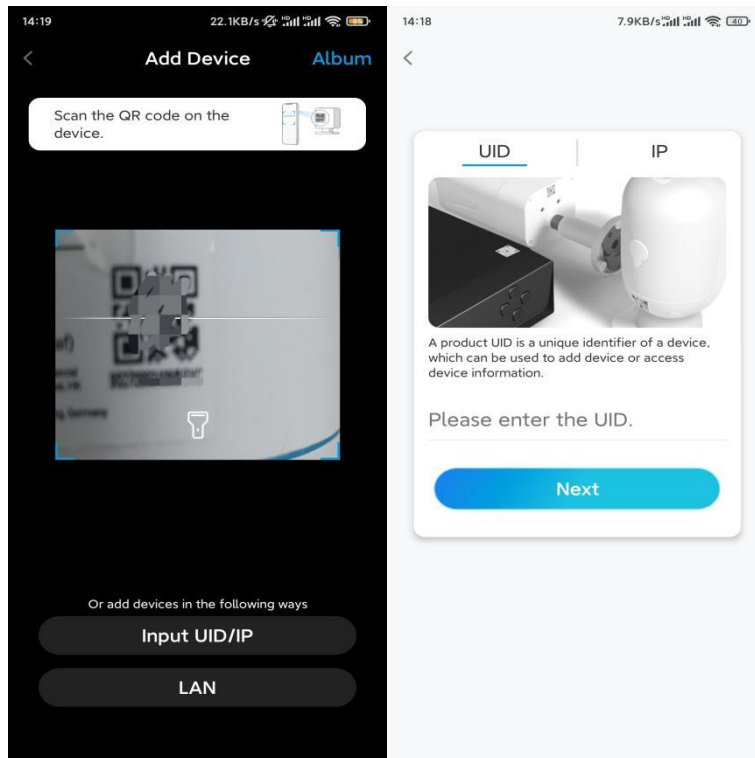
Step 1. Tap the icon  in the top right corner.



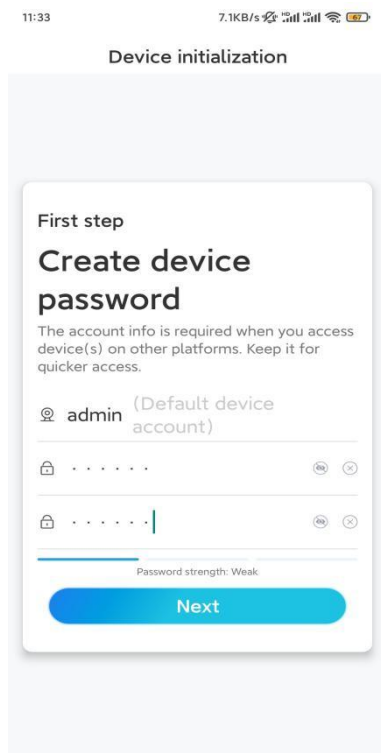
Note: If you've enabled the **Add Device Automatically** option on the App's Settings page, you can tap this device on the **Devices** page and turn to **Step 3** directly.

Step 2. Scan the QR code on the back of the camera. You may tap **Light** to enable a flashlight when setting up the camera in a dark environment.

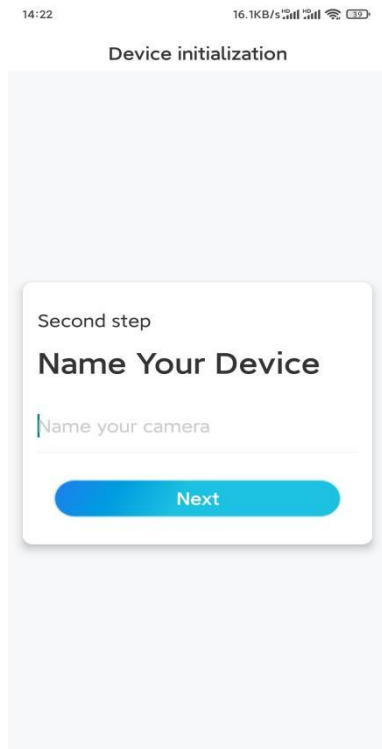
If the phone doesn't respond, please tap **Input UID/IP** and then manually type in the UID (16-digit characters under the QR code of the camera). Then tap **Next**.



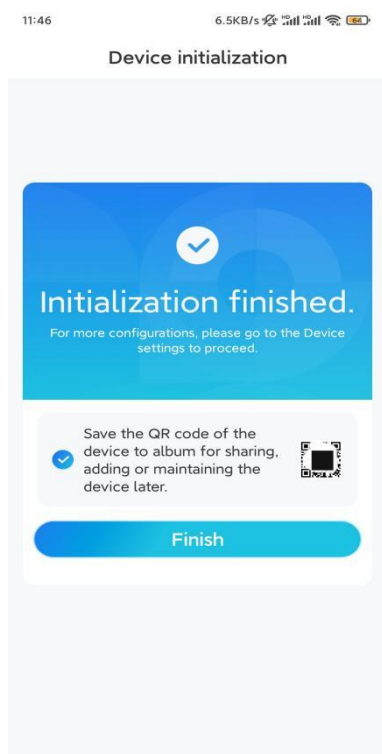
Step 3. Create a login password for your camera. Then tap **Next**.



Step 4. Name your camera. Then tap **Next**.



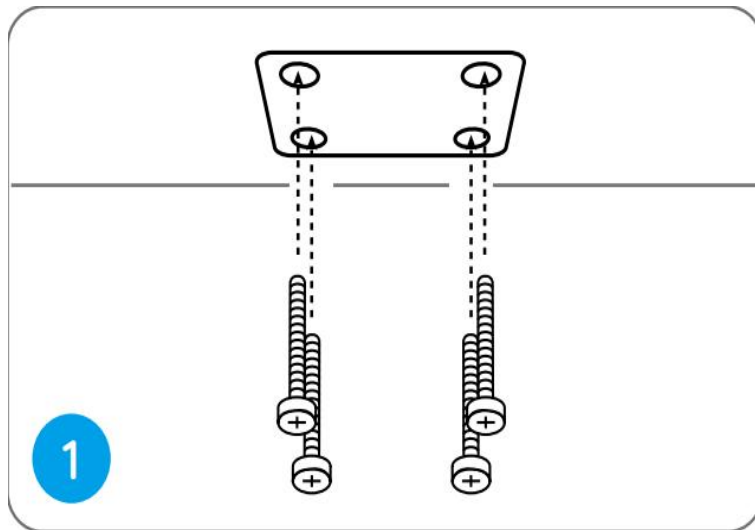
Step 5. Initialization finished! You can start live viewing now.



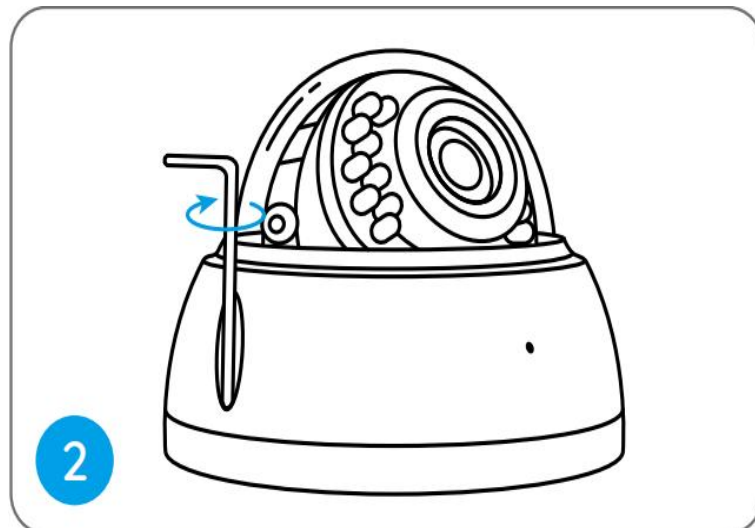
Install the Camera

Please follow the steps below to install the camera.

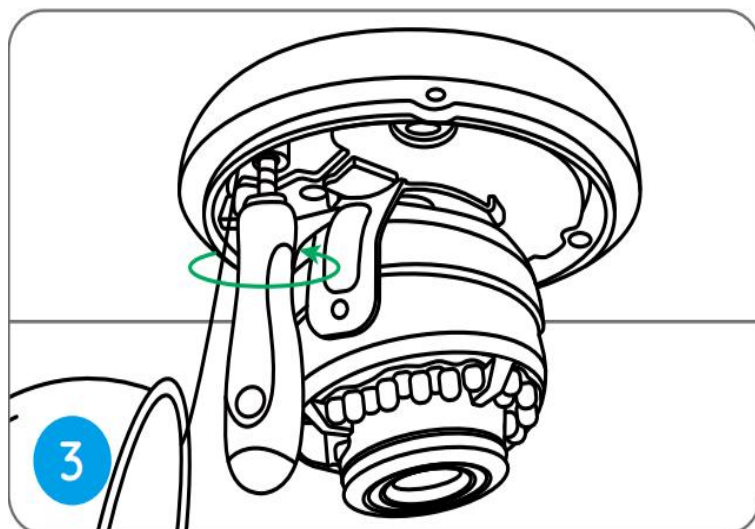
Step 1. Put the mounting template on the ceiling and drill holes at the indicated locations.



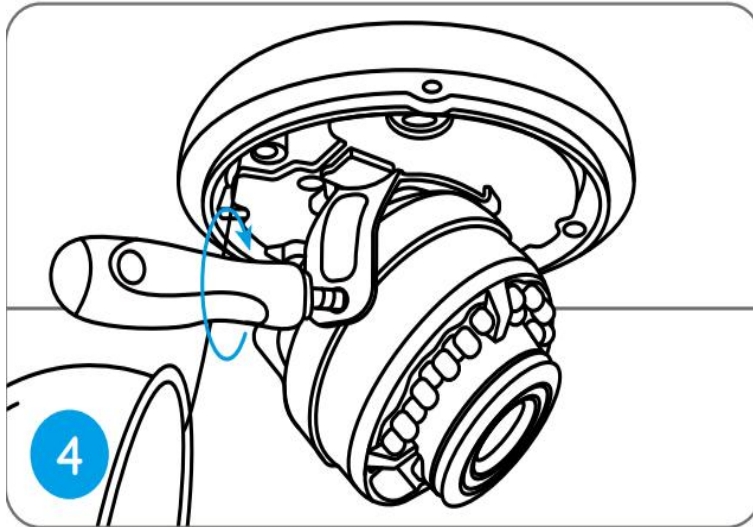
Step 2. Screw the dome cover off with the mounting wrench.



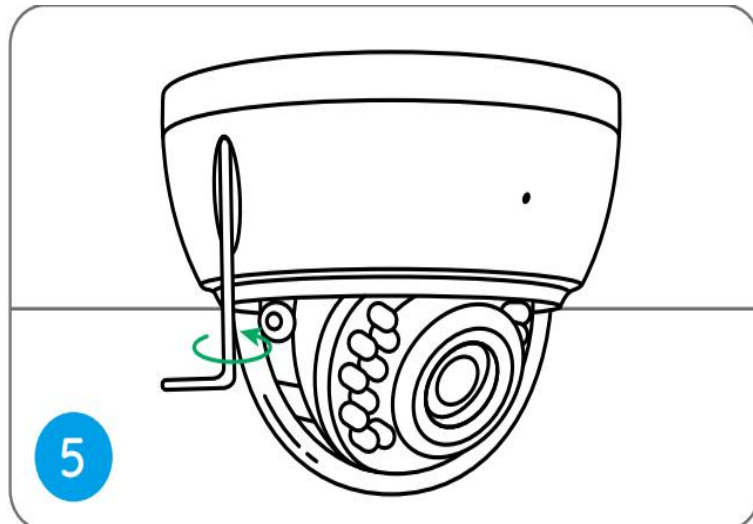
Step 3. Screw the camera to the ceiling.



Step 4. Loosen the two screws on both sides of the camera and adjust the camera viewing angle.



Step 5. Tighten the screws and screw the cover back to the camera.



Done! You've successfully mounted the camera.