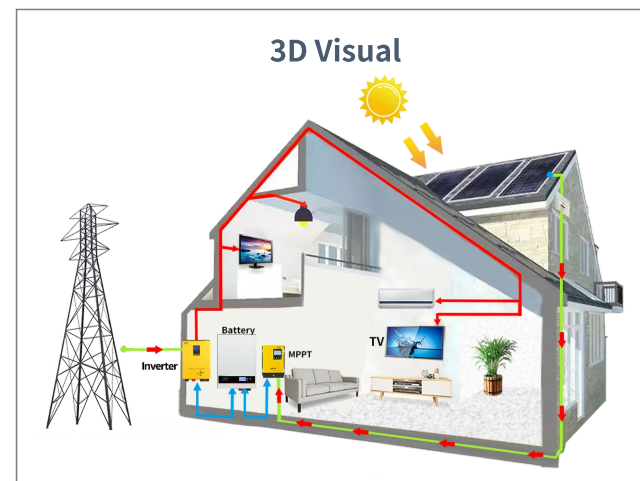
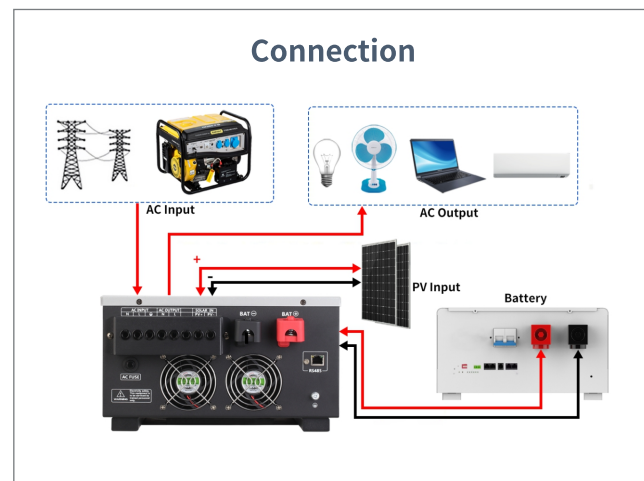


Lifepo4 Battery HIGEE120 16S Series



Power Wall

- 120AH 51.2V 6.1KWH
- 100A Discharge Current
- 80A Big Charge Current



Technical Specification

Model:	HIGEE-120 16S
Rate Capacity	120AH
Energy Power	6.1KWH
type	Lifepo4 Battery
Life Cycles	6000times
Rate Voltage	51.2Vdc
High voltage protection	56VDC
Low voltage protection	44.8VDC
Charge Voltage	58VDC
Max Charge current	80A
Max Discharge Current	100A
Product Size	610X420X230mm
NW	60KG
packing size	680X500X370MM
GW	70KG

*Product Specifications Are Subject To Change Without Further Notice