

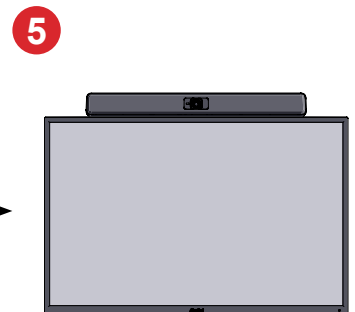
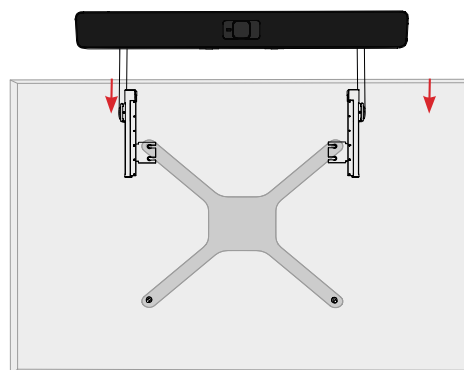
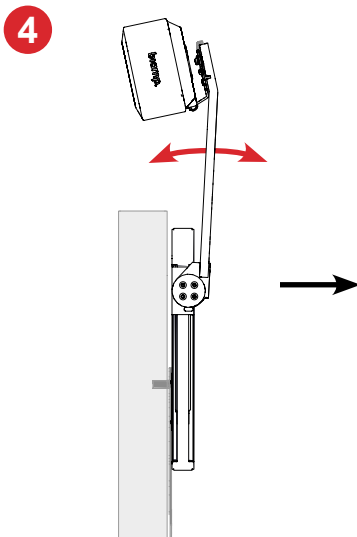
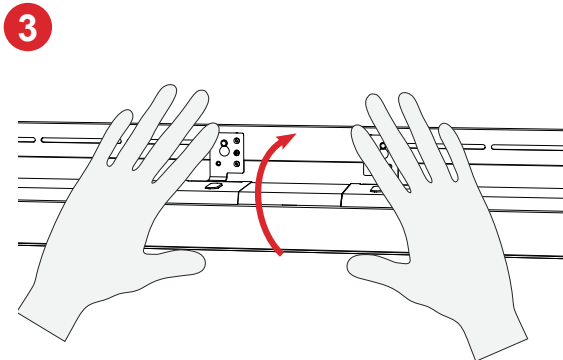
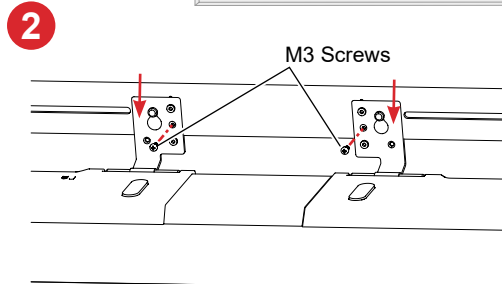
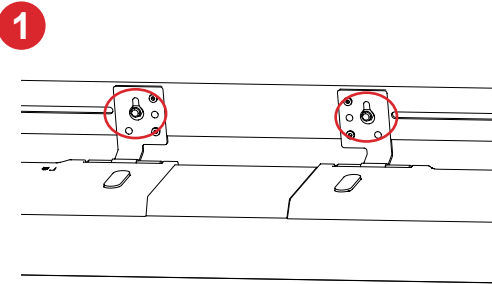
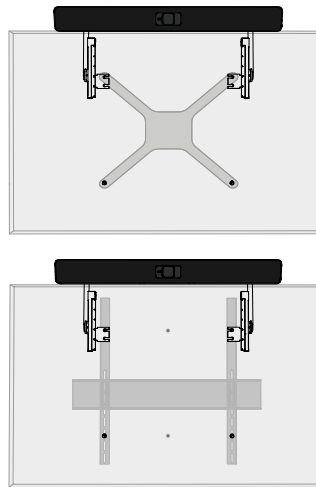
## CONFIGURATION 2 (continued - Bar above the TV using the TV/VESA attachment)

### Bar Attachment to PMA 2000-DM

1. Fold the hinge brackets up and hang the bar on the crossbar knobs.
2. Secure with an M3 screw on each bracket (circled).
3. Rotate the bar up. See adjustment notes at right.
4. Grasp the bar and crossbar in the middle. Move it forward or back for best directionality, and push it down against the display.
5. Installation is complete.

#### Hardware

- M3 Screws x2
- From Parlé bar table stand or wall plate removal*



#### Bar Adjustment

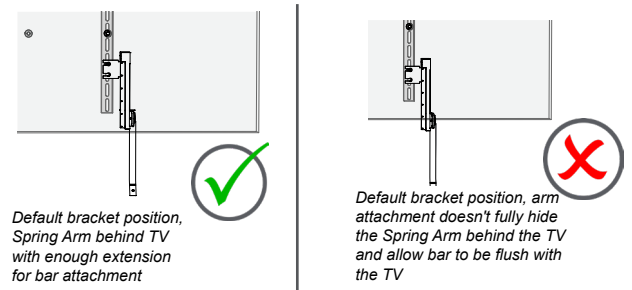
- When rotating the bar up and down, grasp the center with 2 hands close to the plastic lens and rotate with equal force.
- Don't twist the bar from the ends, rotate the bar beyond the mechanical stops, or move it side-to-side while adjusting the angle.
- When extending the bar, move it up or down slowly, especially near its maximum extension.

### CONFIGURATION 3 (Bar below the TV - Kit connection to VESA vertical rails)

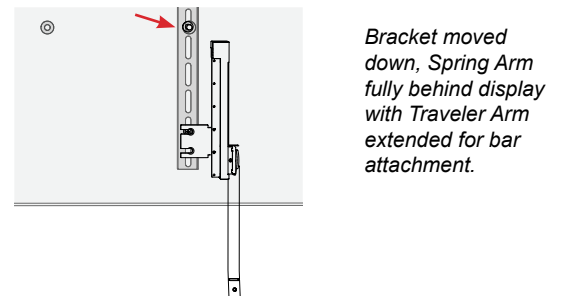
Attachment to the vertical rails is suggested either for ease of installation access, or when the VESA-display attachment points are too far away from the edge of the display for the Traveler Arms to extend past the edge. Use the M6 nuts, M6 bolts and M8 washers shown on the next page to attach the configured arms to the rails.

Hold one Spring Arm behind the TV with the bracket aligning with the expected attachment to the vertical rails. The Spring Arm should extend almost to, but not past the edge of the display, and the Traveler Arm should extend at least 102 mm (4") beyond that edge to allow for bar attachment.

- If the Spring Arm extends past the edge of the TV, continue below to [change the bracket position](#).
- If the Spring Arm is behind the TV and the Traveler Arm extends the minimum amount, [attach the arms](#) to the rails.



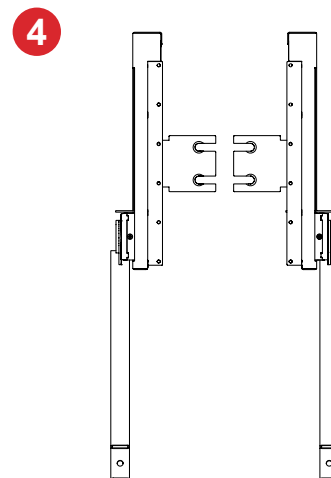
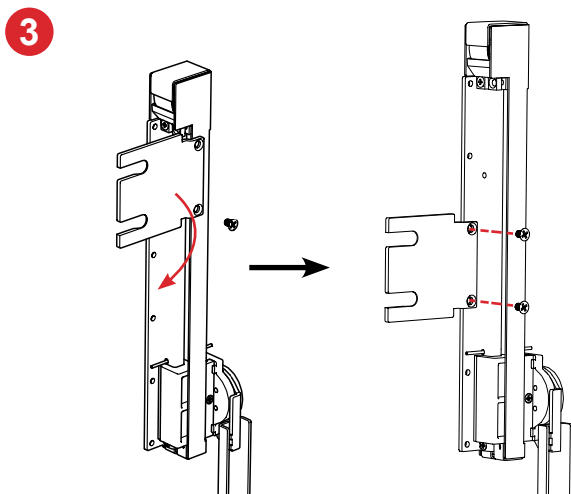
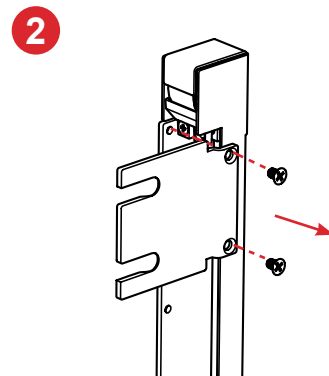
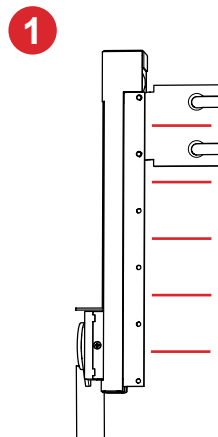
Red arrow indicates VESA connection to the display



### Change Bracket Position on Spring Arm

There are 5 positions for the bracket.

1. Determine the best position for the bracket.
2. From the back of the Spring Arm, unscrew the bracket, reserving the screws for reattachment.
3. Reposition the bracket, and reattach. Fully tighten both connections.
4. Repeat for the other arm. Both brackets must be at the same position on the Spring Arms.

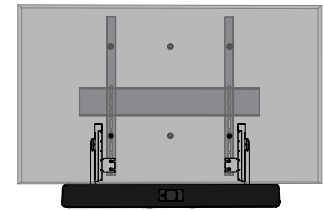


## CONFIGURATION 3 (continued - Bar below the TV / Kit connection to vertical rails)

### Arm Attachment to VESA Vertical Rails

Use the hardware noted at right to attach the configured arms to the rails.

1. Position each bracket against the flat side of the rail (between the rail and the display). The nut and flat washer will sit inside the rail channel. The arms can be positioned either to the outside (recommended) or inside of the rails, and must be at the same height. The Spring Arm portion of the arm must be fully behind the TV.
2. Insert each screw into the upper notch in the bracket, through the rail, then secure with the flat washer and nut as shown.
3. Ensure the arms are hanging parallel with the VESA rails, and tighten the circled connections.



#### Kit parts

- Configured arms x2

#### Hardware

- M6 x 12 Flat Head Screws x2
- M6 Nuts x2
- M8 Flat Washers x2



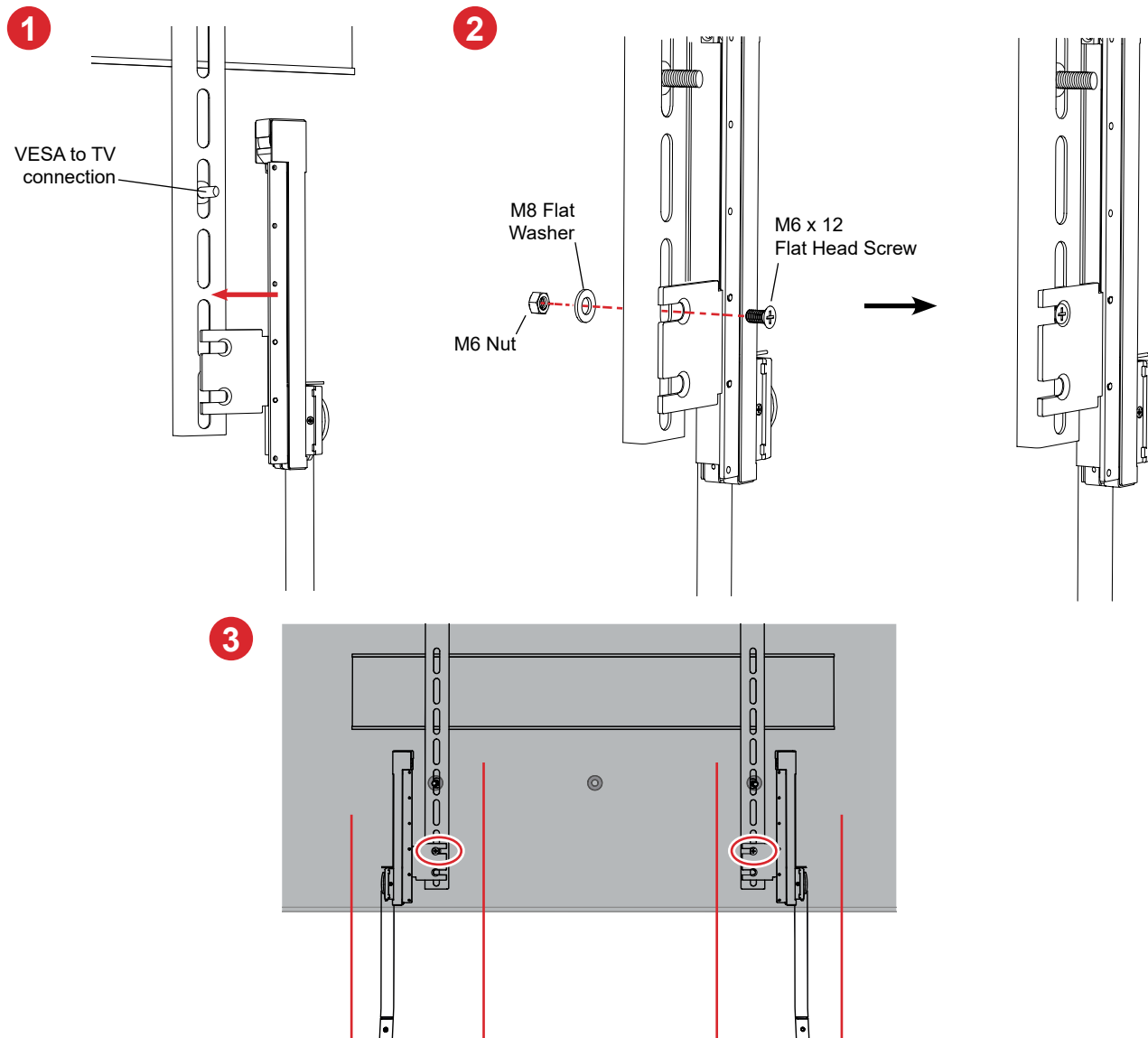
M6 x 12  
Flat Head  
Screw



M6 Nut



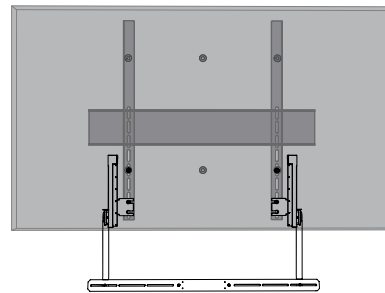
M8 Flat  
Washer



## CONFIGURATION 3 (continued - Bar below the TV / Kit connection to vertical rails)

### Crossbar Attachment

1. Fit the crossbar into the small notches in the Traveler Arms (as shown). Center and loosely screw the crossbar to each arm.
2. With the arms parallel to each other and the crossbar parallel to the edge of the display, fully tighten the screws holding the arms to the TV (circles).
3. Center the crossbar and tighten the screws holding it to the arms (arrows).

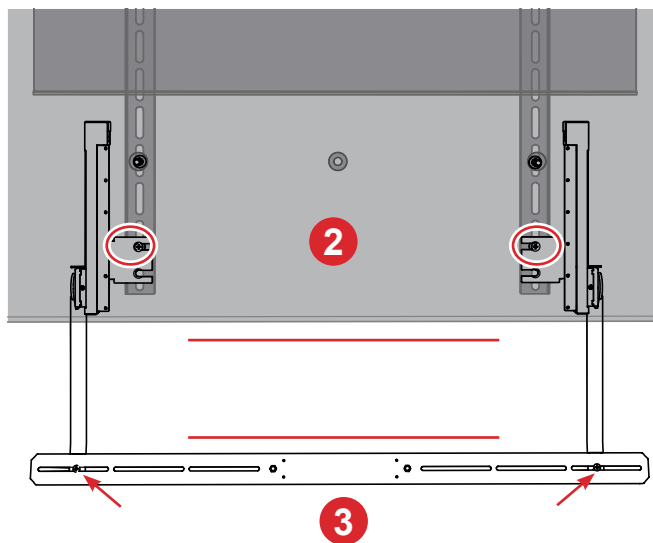
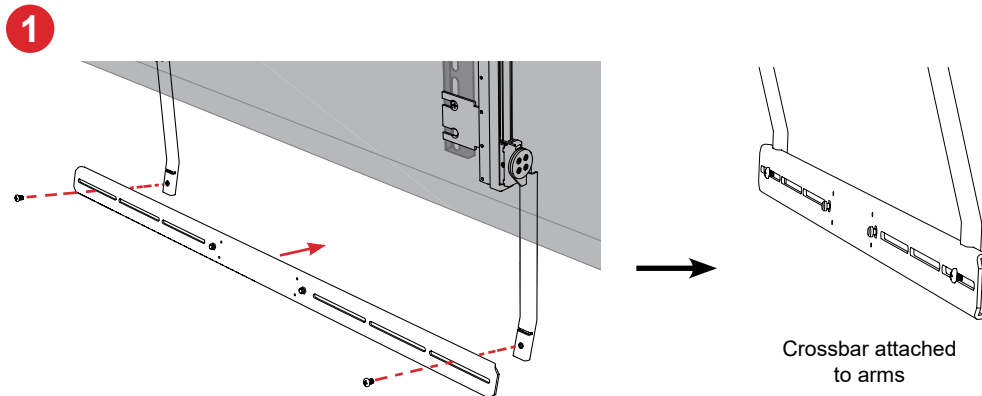


#### Kit parts

- Crossbar x1
- (M5 Screws) x2



M5 x 8  
PH Screw

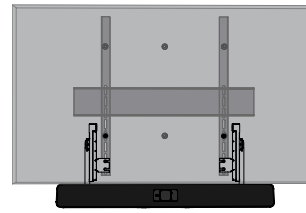




## CONFIGURATION 3 (continued - Bar below the TV / Kit connection to vertical rails)

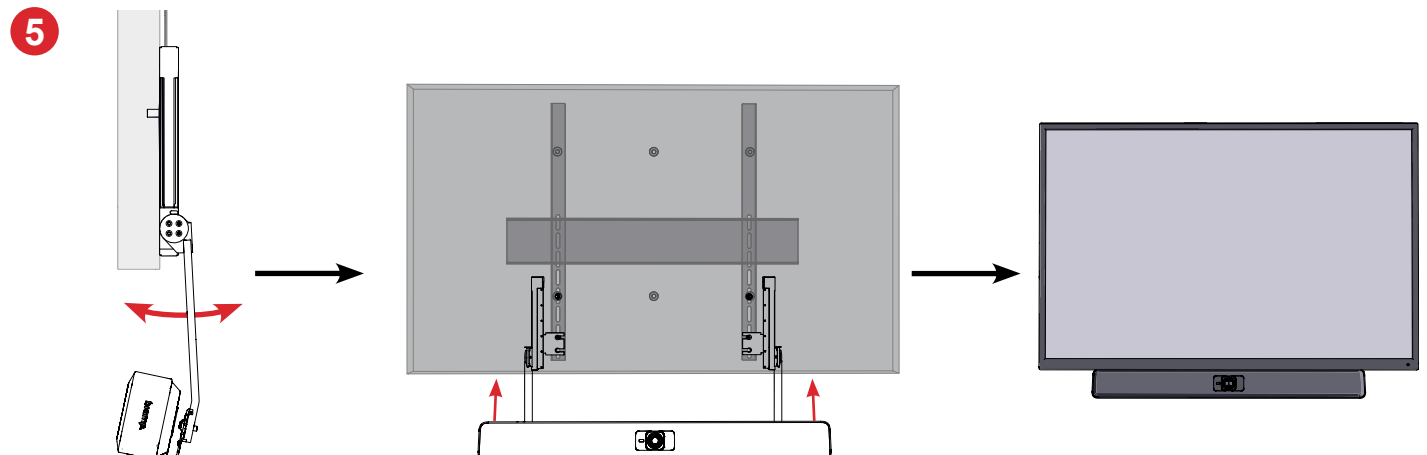
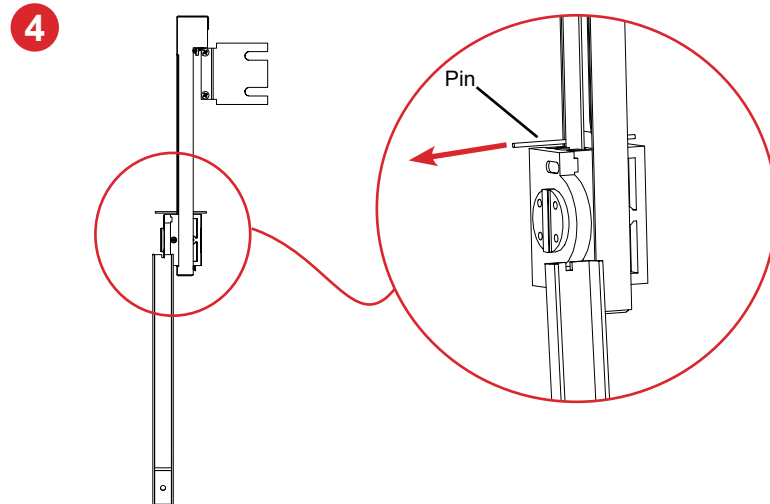
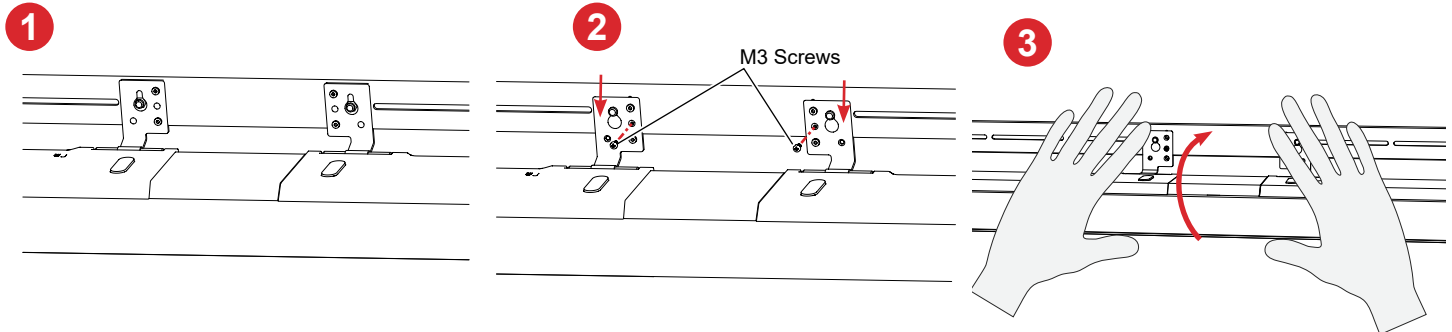
### Bar Attachment

1. Fold the hinge brackets up and hang the bar on the crossbar knobs.
2. Pull the bar down slightly to capture the knobs, and secure with an M3 screw on each bracket (circled).
3. Rotate the bar up. See adjustment notes below right.
4. Remove the pins holding the arms in the extended position. The pins can be discarded.
5. Grasp the bar/crossbar in the middle to move it forward or backward to better align with the audience. Push the bar up against the display. Installation is complete.



### Hardware

- M3 Screws x2
- From *Parlé* bar stand or plate removal



### Bar Adjustment

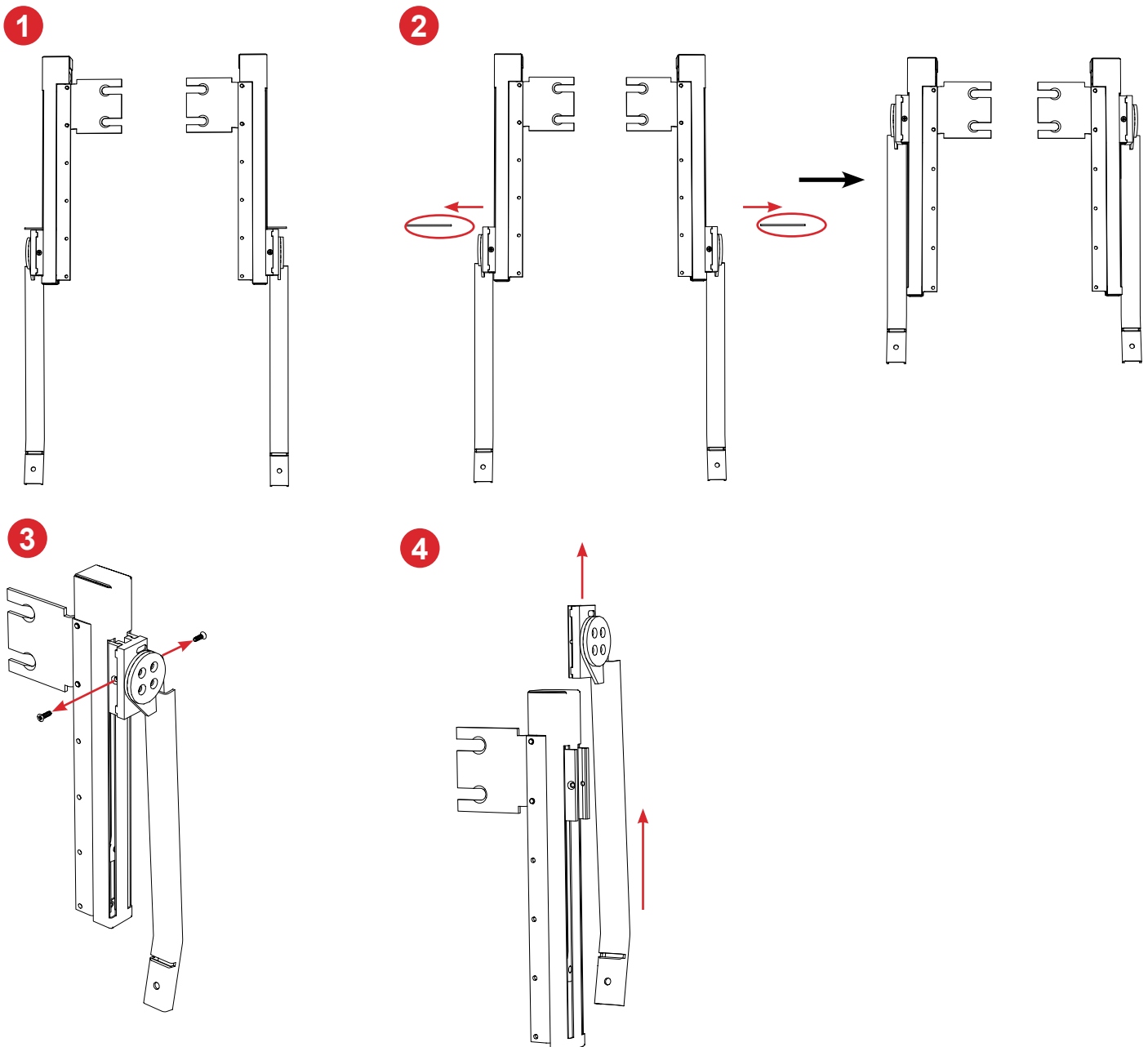
- When rotating the bar up and down, grasp the center with 2 hands close to the plastic lens and rotate with equal force.
- Don't twist the bar from the ends, rotate the bar beyond the mechanical stops, or move it side-to-side while adjusting the angle.
- When extending the bar, move it up or down slowly, especially near its maximum extension.

## CONFIGURATION 4 (Bar above the TV / Kit connection to vertical rails)

### Change arm configuration

The arms ship configured for below-the-screen mounting. The arms need to be reconfigured to preserve the tension spring action function when mounted above the TV. To do this, the lower portion of each arm (Traveler Arm) must be removed, flipped, and reattached to the opposite Spring Arm.

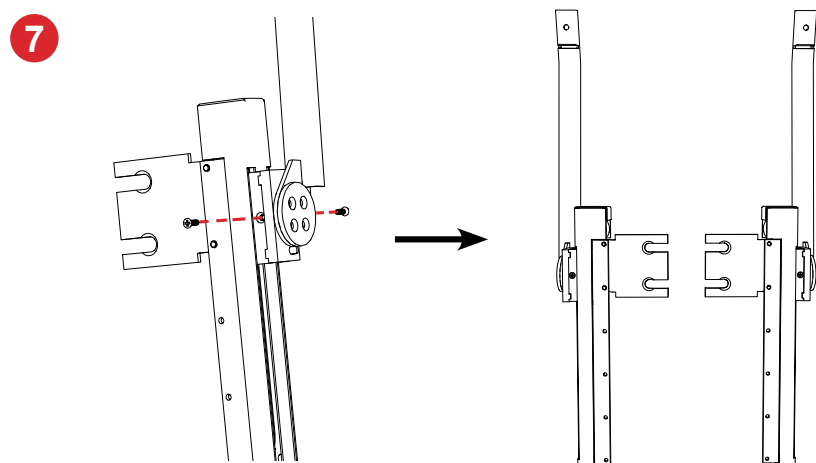
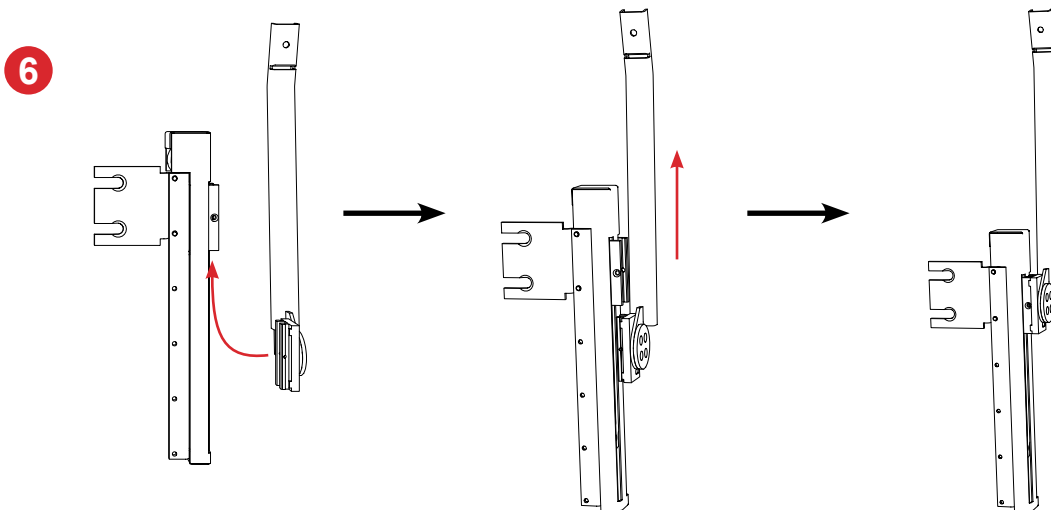
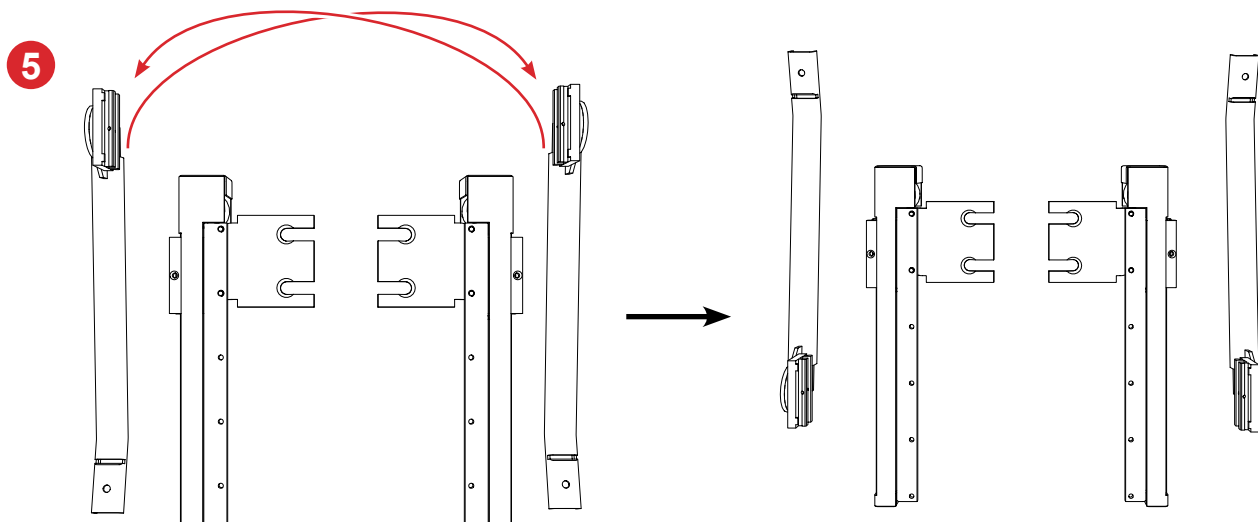
1. Place the arms side by side as shown.
2. Remove the pins holding the Traveler Arms extended. Move the Traveler Arms up if the spring doesn't pull it up automatically. Pins can be discarded.
3. Remove screws holding each Traveler Arm (front and back). Reserve for reattachment.
4. Slide each Traveler Arm up to remove it.



## CONFIGURATION 4 (continued - Bar above the TV / Kit connection to vertical rails)

### Change arm configuration (continued)

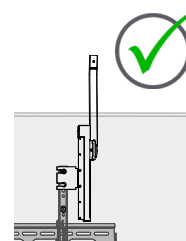
5. Turn each arm 180° and place next to the opposite Spring Arm as shown.
6. Slide each carriage up into the Spring Arm
7. Reinstall screws on both sides to secure.



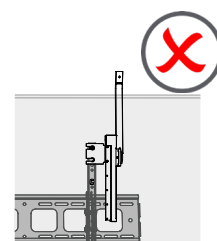
## CONFIGURATION 4 (continued - Bar above the TV / Kit connection to vertical rails)

Hold one Spring Arm behind the TV with the bracket level with an upper hole on the VESA vertical rails, aligning the upper slot with that rail hole. The Spring Arm should extend almost to, but not past the upper edge of the display, and the Traveler Arm should extend at least 102 mm (4") above that edge to allow for bar attachment.

- If the Spring Arm extends past the upper edge of the TV, continue below to [change the bracket position](#).
- If the Spring Arm is behind the TV and the Traveler Arm extends the minimum amount, [attach the arms](#) to the TV.



Bracket repositioned to keep Spring Arm behind TV with enough extension for bar attachment



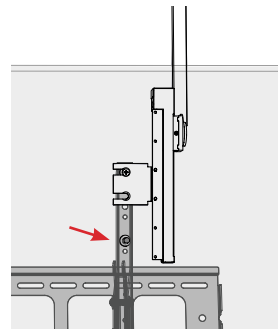
Default bracket position, not enough room for bar attachment

### Change Bracket Position on Spring Arm

There are 5 positions for the bracket.

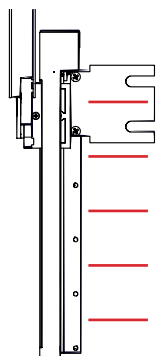
1. Determine the best position for the bracket to ensure the Spring Arm is behind the TV.
2. From the back of the Spring Arm, unscrew the bracket, reserving the screws for reattachment.
3. Reposition the bracket, and reattach. Fully tighten both connections.
4. Repeat for the other arm. Both brackets must be at the same position on the Spring Arms.

Red arrow indicates VESA connection to the display



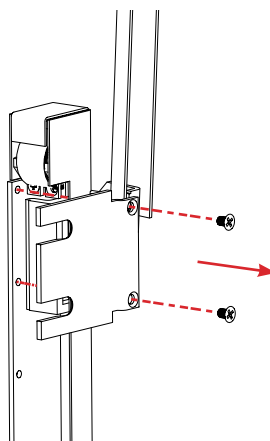
Bracket moved down on Spring Arm to keep it behind display with Traveler Arm extended for bar attachment.

1

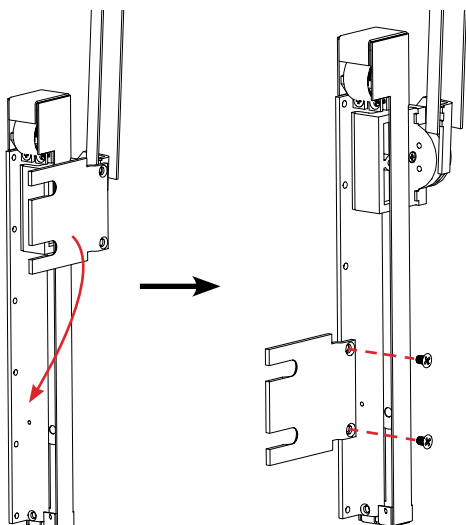


Position bracket on arm (5) places available

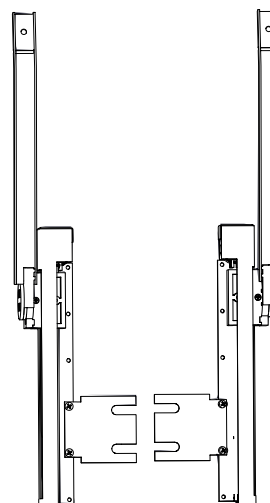
2



3



4

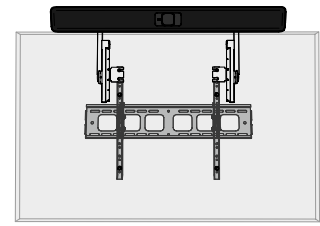


## CONFIGURATION 4 (continued - Bar above the TV / Kit connection to vertical rails)

### Arm Attachment to VESA Vertical Rails

Use the hardware noted at right to attach the configured arms to the rails.

1. Position each bracket against the flat side of the rail (between the rail and the TV). The nut and flat washer will sit inside the rail channel. The arms can be positioned either to the outside (recommended) or inside of the rails, and must be at the same height. The Spring Arm portion of the arm must be fully behind the TV.
2. Insert each screw into the upper notch in the bracket, through the rail, then secure with the flat washer and nut as shown.
3. Ensure the arms are hanging parallel with the VESA rails, and tighten the circled connections.



#### Kit parts

- Configured arms x2

#### Hardware

- M6 x 12 Flat Head Screws x2
- M6 Nuts x2
- M8 Flat Washers x2



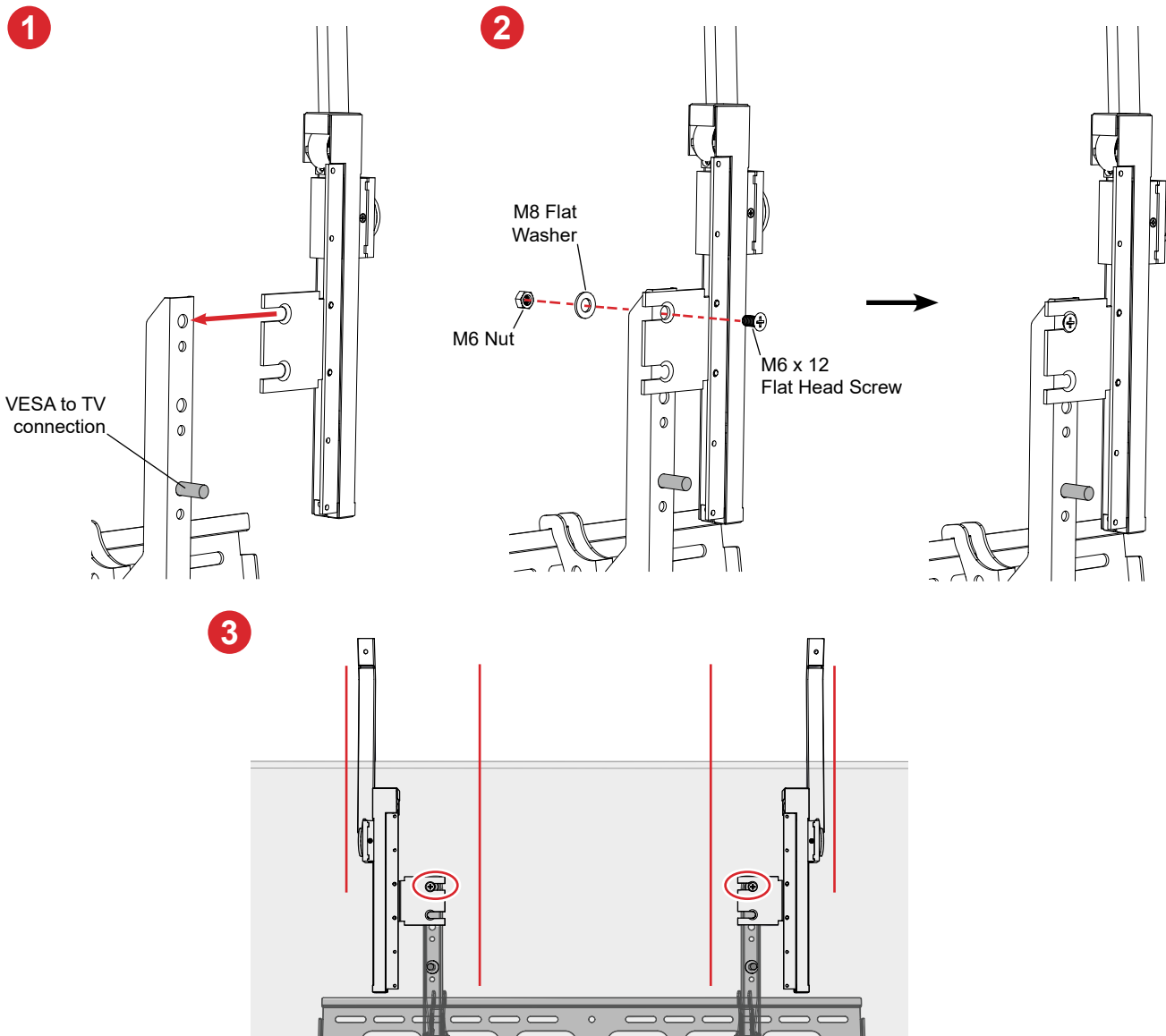
M6 x 12  
Flat Head  
Screw



M6 Nut



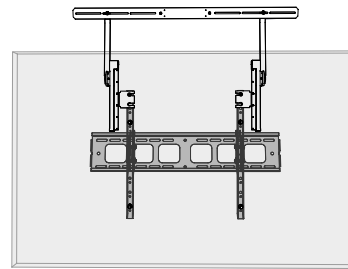
M8 Flat  
Washer



## CONFIGURATION 4 (continued - Bar above the TV / Kit connection to vertical rails)

### Crossbar Attachment

1. Fit the crossbar into the small notches in the Traveler Arms (as shown). Center and loosely screw the crossbar to each arm.
2. With the arms parallel to each other and the crossbar parallel with the edge of the display, fully tighten the screws holding the arms to the TV (circles).
3. Center the crossbar and tighten the screws holding it to the arms (arrows).

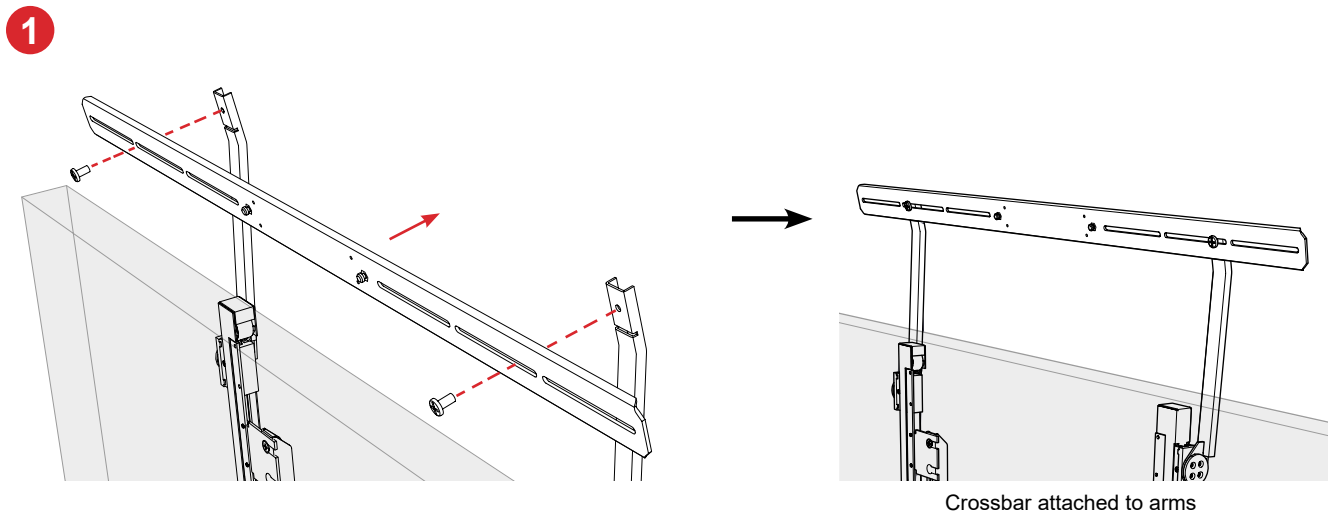


#### Kit parts

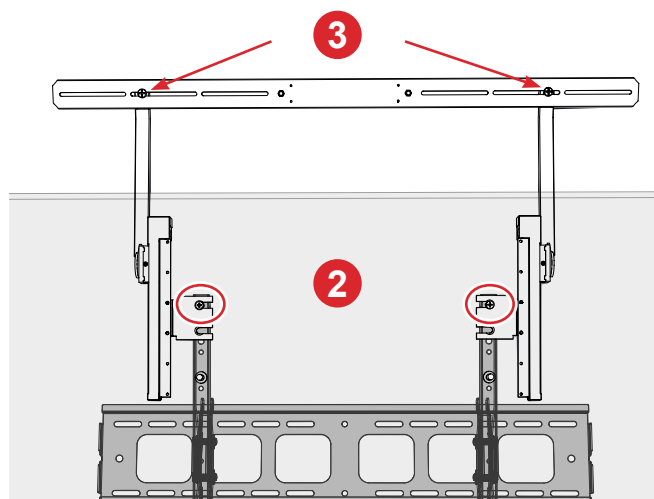
- Crossbar x1
- (M5 Screws) x2



M5 x 8  
PH Screw



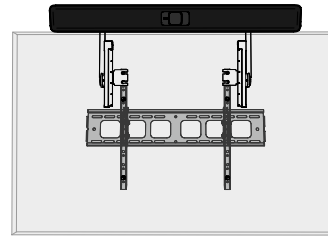
Crossbar attached to arms



## CONFIGURATION 4 (continued - Bar above the TV / Kit connection to vertical rails)

### Bar Attachment

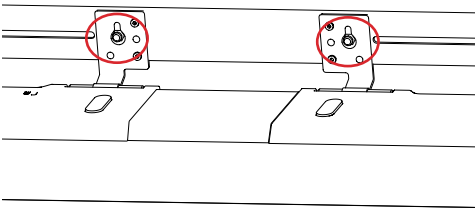
1. Fold the hinge brackets up and hang the bar on the crossbar knobs.
2. Secure with an M3 screw on each bracket (circled).
3. Rotate the bar up. See adjustment notes below right.
4. Grasp the bar / crossbar in the middle to move it forward or back for best directionality, and push it down against the display.
5. Installation is complete.



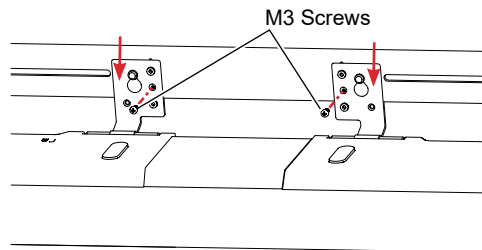
#### Hardware

- M3 Screws x2
- From Parlé bar table stand or wall plate removal*

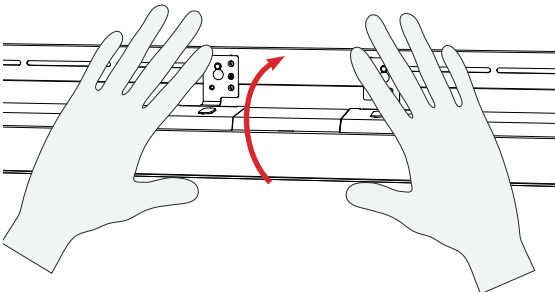
1



2



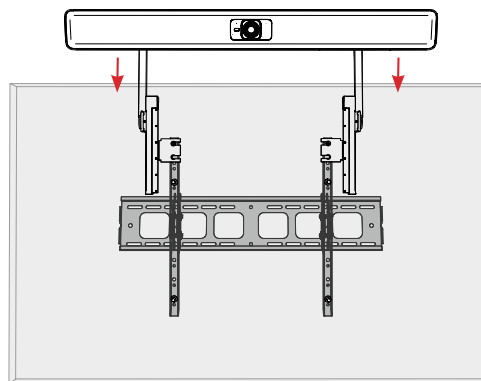
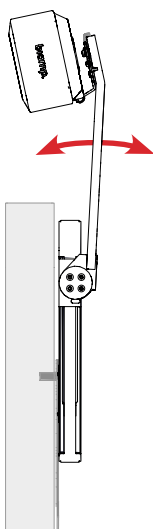
3



#### Bar Adjustment

- When rotating the bar up and down, grasp the center with 2 hands close to the plastic lens and rotate with equal force.
- Don't twist the bar from the ends, rotate the bar beyond the mechanical stops, or move it side-to-side while adjusting the angle.
- When extending the bar, move it up or down slowly, especially near its maximum extension.

4



5



## CONFIGURATION 5 (Bar below the TV / Low Profile VESA mount)

### Low Profile VESA mounts (Add spacers)

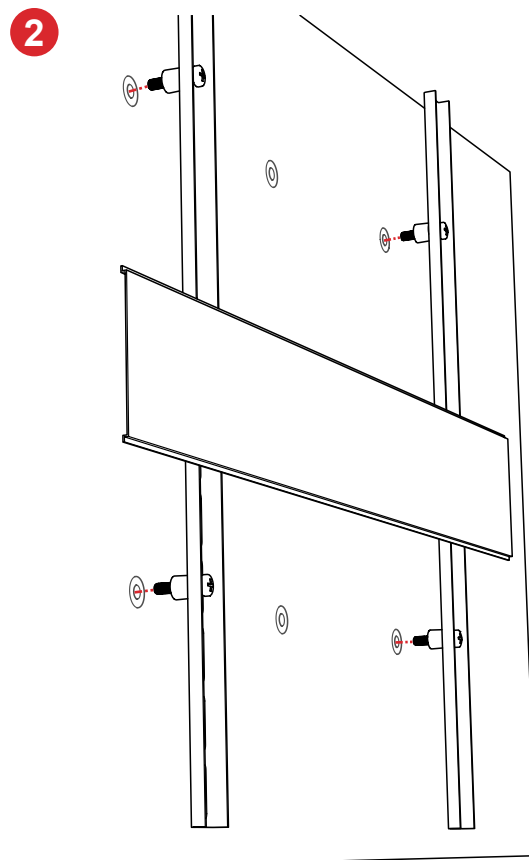
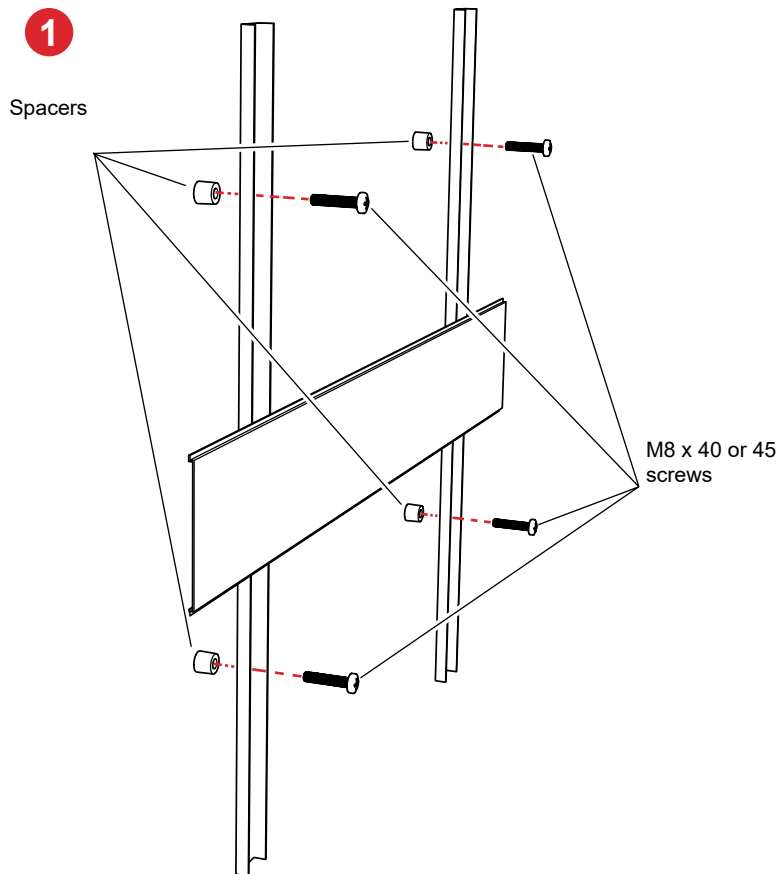
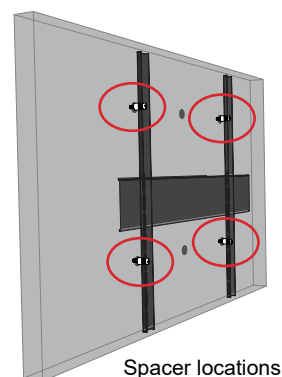
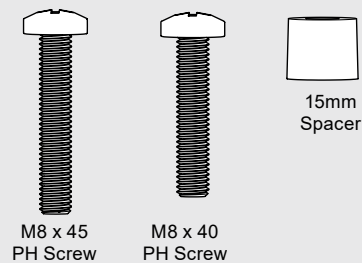
If there isn't enough space to accommodate the depth of the kit arms between the TV and VESA mount, spacers need to be installed at each of the four TV-to-VESA attachment points (circled at right). This process is also applicable with X-type low profile VESA mounting systems. The TV must be removed from the VESA mount first before adding the spacers.

1. Replace the mounting screws with either the 40 or 45 mm M8 screws. Insert each through the VESA mount (from the rear) and add a spacer to each screw. Use the same length screw for all four connections.
2. If the screws will still be accessible after the TV is on the wall, reinstall the TV, but leave about 3 mm (.12") space open between either the lower or upper set of spacers and the TV (where the kit arms will be located).

**Note:** Depending upon the type of VESA mounting system, it may be easier to install the arms on the appropriate screws prior to reattaching the TV to the wall. If that is the case - follow the installation steps in either Configuration 1 or 2 until the crossbar is loosely attached to the arms before attaching the TV and kit assembly to the wall.

#### Parts and Hardware

Spacers x4  
M8 x 40 Screws x4 OR  
M8 x 45 Screws x4

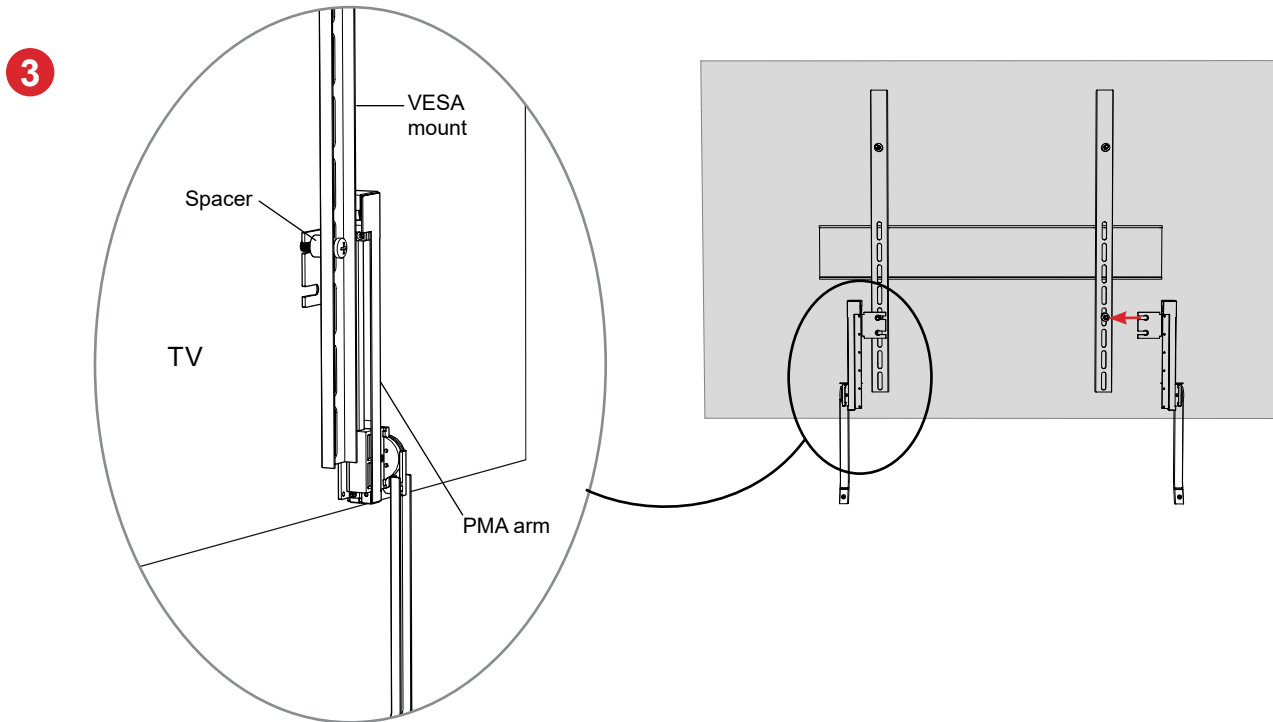




## CONFIGURATION 5 (continued - Bar below the TV / Low Profile VESA mount)

- The Parl  bar can be installed below or above the display. Follow the appropriate instructions to install the bar.

**Note:** The arms should always be inserted between the spacer and the TV (see example below)



- Install bar below the display - go to [Configuration 1](#) (pages 4-7)  
Install the bar above the display - go to [Configuration 2](#) (pages 8-13)



[Configuration 1](#)



[Configuration 2](#)

## CONTACT US

Email: [support@biamp.com](mailto:support@biamp.com)

Warranty: [biamp.com/legal/warranty-information](http://biamp.com/legal/warranty-information)

Web: [support.biamp.com](http://support.biamp.com)

Safety & Compliance: [biamp.com/compliance](http://biamp.com/compliance)



A: 9300 S.W. Gemini Drive Beaverton, OR 97008 USA

W: [www.biamp.com](http://www.biamp.com)

11SEP2023