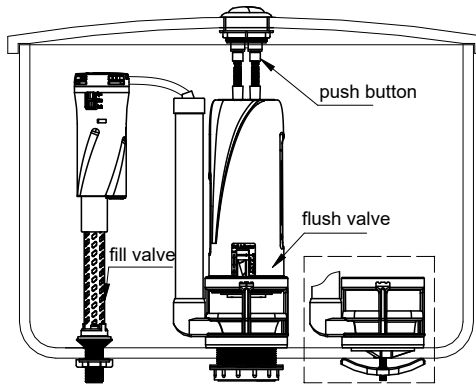


INSTRUCTION

1. Profile

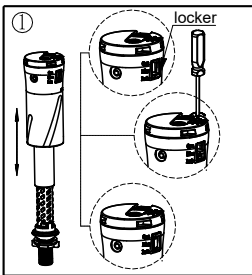


2. Steps

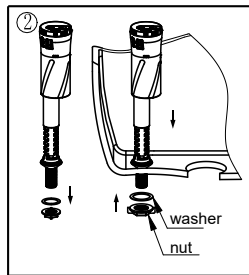
1) Preparation

Please clean the tank and pipe concerned if it is old one.

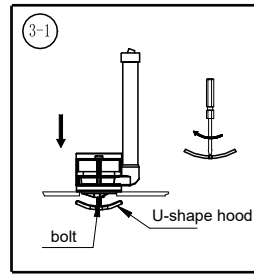
2) Installation



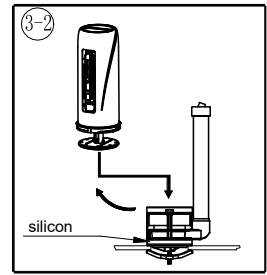
Moving the locker to OPEN position for quick adjustment to required height. Moving the locker to LOCK position, the height is fixed. If need accurate adjustment, then move it to MICRO position, and then adjust with a screw-driver (1.8mm per level)



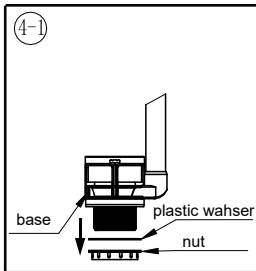
Twist the nut and washer from fill valve. Put the fill valve into inlet hole inside from cistern tank, then tight washer and nut. Then adjust the fill valve to the proper position.



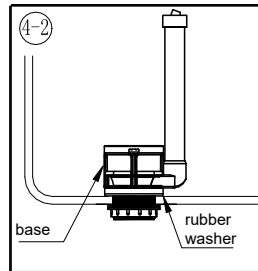
Put the base in vertical position, then use screw-driver to tight the base.



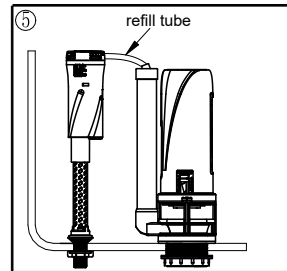
Put flush valve into base.



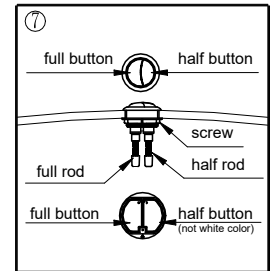
Twist plastic washer and nut from flush base.



Put base into outlet hole, and adjust to proper direction. Tight the plastic washer and nut. Finally confirm the rubber washer should be well connected with outlet hole.



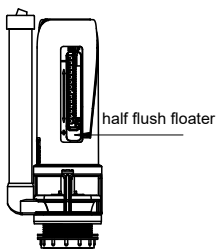
Refill tube connect the refilling hole and flush valve groove on overflow pipe.



Adjust the push button's direction and make sure the full rod touch the full button, half rod touch half button. Then tight screw.

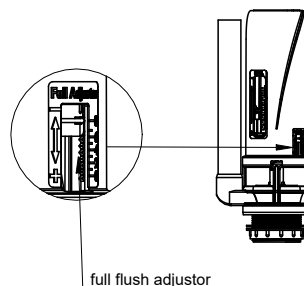
3. Adjust flush volume

1) Adjust half flush volume



The fixed position of half flush floater (HFF) decide the half flush volume (HFV). When the HFF is at the bottom, the HFV is the largest. When the HFF is at the highest, the HFV is the least. The higher the HFF, the half flush water level is higher, then HFV is less.

2) Adjust full flush volume



The fixed position of full flush floater (FFF) decide the full flush volume (FFV). When the FFF is at the bottom, the FFV is the largest. When the FFF is at the highest, the FFV is the least. The higher the FFF, the full flush water level is higher, then FFV is less;

If the FFV is set to the bottom: The window size of full flush adjustor (FFA) decide the full flush volume (FFV). FFA move upwards, the open window is bigger, FFV is less. FFA move downwards, the open window is smaller, FFV is more.