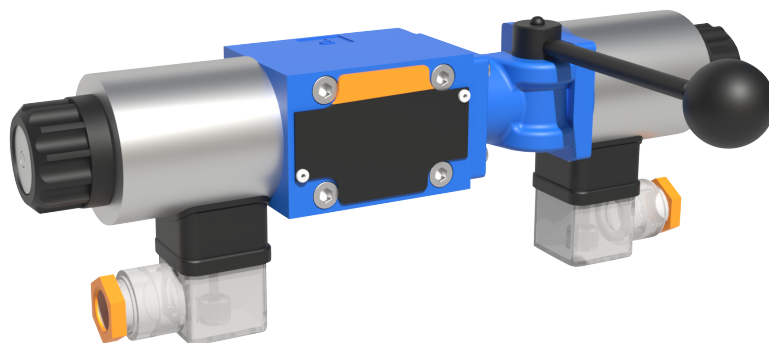




**SOLENOID OPERATED
DIRECTIONAL CONTROL VALVES**

TYPE WEMM 6(10)



WWW.OLEDDINAMICAMOZIONI.IT

WEMM 6(10)

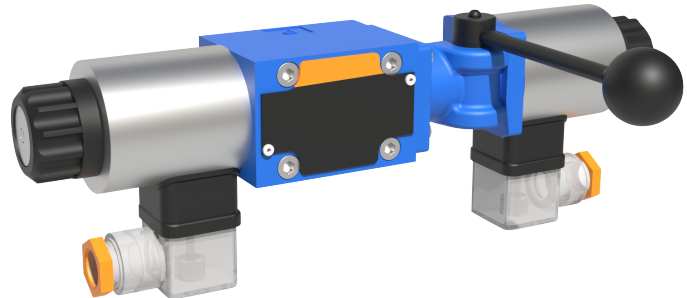
SOLENOID OPERATED
DIRECTIONAL CONTROL VALVES

DISTRIBUTORI
OLEODINAMICI



INTRODUCTION

WEMM 6(10) SERIES DIRECTIONAL CONTROL VALVES ARE SOLENOID OPERATED DIRECTIONAL SPOOL VALVES WITH MANUAL CONTROL LEVER. THESE VALVES ARE USED TO THE START, STOP AND DIRECTION OF FLOW.

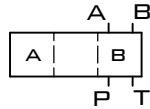


TECHNICAL DATA

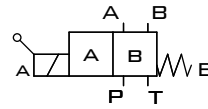
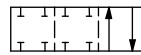
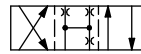
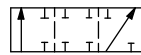
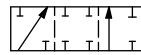
SIZE		6	10
MAX. FLOW RATE (L/MIN)		80	120
OPERATING PRESSURE (MPa)	A, B, P PORTS	35	
	T PORT	21	
VALVE BODY (MATERIAL)		CASTING PHOSPHATING SURFACE	

SCHEMES

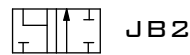
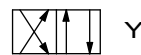
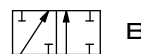
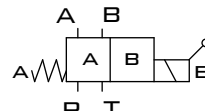
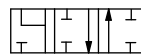
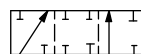
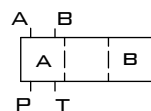
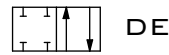
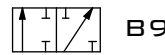
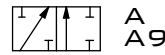
SCHEMES OF 2-POSITION DIRECTIONAL SPOOL VALVES
VERSIONS WITH POSITIONS A, B



WORKING AND
INDIRECT POSITIONS



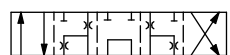
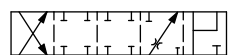
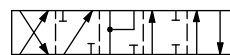
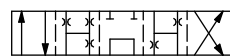
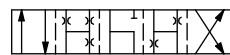
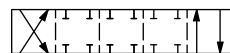
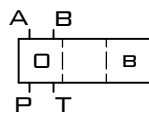
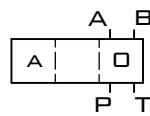
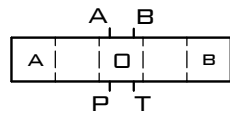
WORKING
POSITIONS



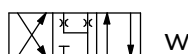
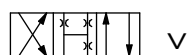
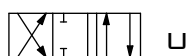
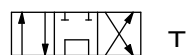
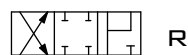
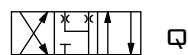
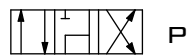
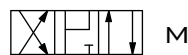
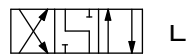
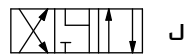
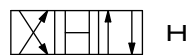
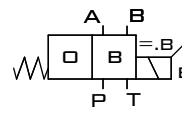
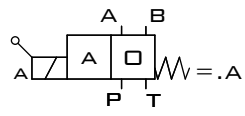
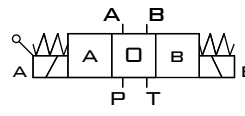


SCHEMES

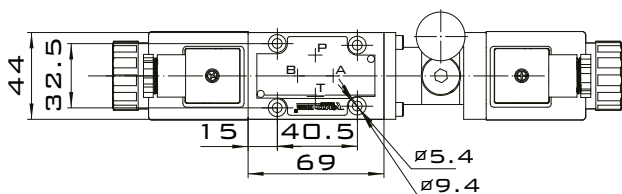
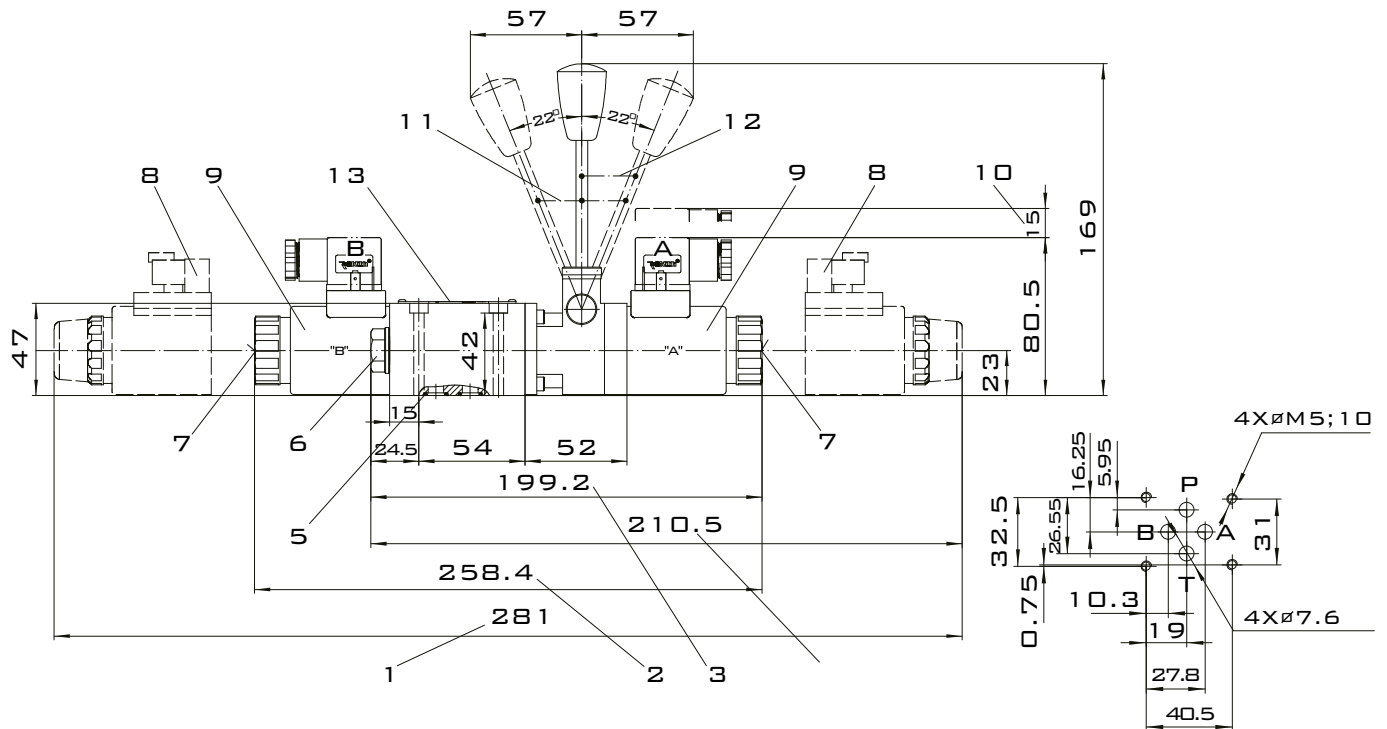
WORKING AND INDIRECT POSITIONS



WORKING POSITIONS



SUBPLATE INSTALLATION DIMENSIONS



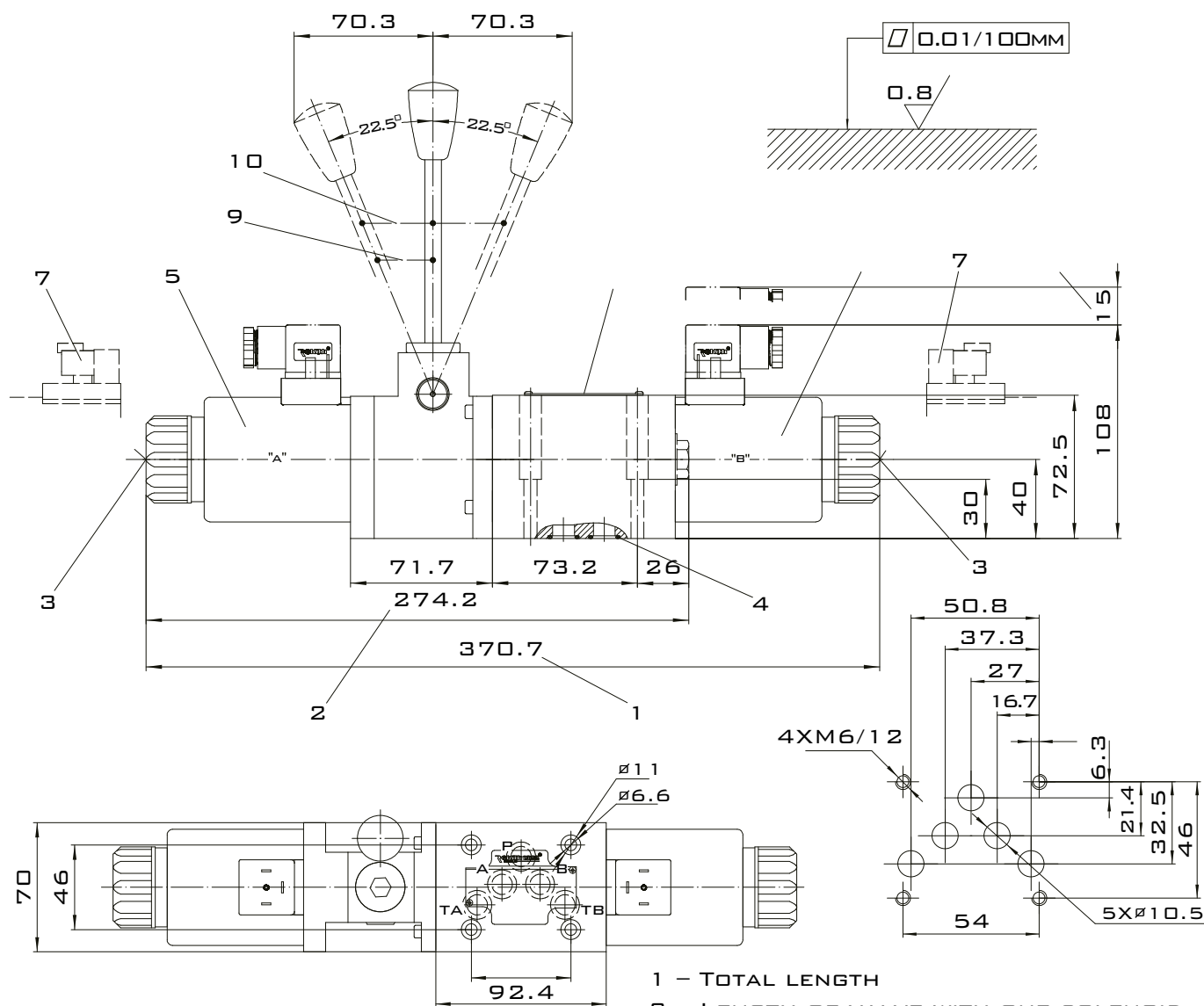
SUBPLATES

SUBPLATES MUST BE ORDERED IN ACCORDANCE TO THE TYPE OF THE SUBPLATE, TAKING INTO CONSIDERATION DIMENSIONS OF THREADED CONNECTIONS ACCORDING TO DATA SHEET:

G341/01 (G1/4"); G341/02 (M14X1.5)
G342/01 (G3/8"); G342/02 (M18X1.5)
G502/01 (G1/2"); G502/02 (M22X1.5)

- 1 - LENGTH WITH DEUTSCH DT04-2P TYPE CONNECTOR
- 2 - LENGTH WITH PLUG-IN-CONNECTOR: TYPE ISO 4400 (DIN 43650 - A)
- 3 - LENGTH OF VALVE WITH ONE SOLENOID (PLUG-IN-CONNECTOR)
- 4 - LENGTH OF VALVE WITH ONE SOLENOID (DT04-2P CONNECTOR)
- 5 - O-RING 9,25 X 1,78 - 4 PCS/SET
- 6 - BOLT IN ONE SOLENOID VALVE
- 7 - MANUAL OVERRIDE
- 8 - DEUTSCH DT04-2P TYPE CONNECTOR
- 9 - SOLENOID
- 10 - SPACE REQUIRED TO REMOVE THE PLUG
- 11 - SECOND SWITCHING POSITION
- 12 - THIRD SWITCHING POSITION

SUBPLATE INSTALLATION DIMENSIONS



SUBPLATES

SUBPLATES MUST BE ORDERED IN ACCORDANCE TO THE TYPE OF THE SUBPLATE, TAKING INTO CONSIDERATION DIMENSIONS OF THREADED CONNECTIONS ACCORDING TO DATA SHEET:
G66/O1 (G3/8"); G66/O2 (M18X1.5)
G67/O1 (G1/2"); G67/O2 (M22X1.5)
G534/O1 (G3/4"); G534/O2 (M27X1.5)

- 1 - TOTAL LENGTH
- 2 - LENGTH OF VALVE WITH ONE SOLENOID
- 3 - MANUAL OVERRIDE
- 4 - O-RING 9,25 x 1,78 - 4 PCS/SET
- 5 - SOLENOID
- 6 - NAMEPLATE BOLT IN ONE SOLENOID VALVE
- 7 - DEUTSCH DTD4-2P TYPE CONNECTOR
- 8 - SPACE REQUIRED TO REMOVE THE PLUG
- 9 - SECOND SWITCHING POSITION
- 10 - THIRD SWITCHING POSITION



DISTRIBUTORI
OLEODINAMICI

WEMM 6(10)

SOLENOID OPERATED
DIRECTIONAL CONTROL VALVES

ORDER CODE

	WEMM				J	C													
--	------	--	--	--	---	---	--	--	--	--	--	--	--	--	--	--	--	--	--

3 = 3 - WAY
4 = 4 - WAY

6 = 6 SIZE
10 = 10 SIZE

SPOOL TYPE

6X = 60 - 69 SERIES
3X = 30 - 39 SERIES

J = LAND-BASED

C = STANDART SOLENOID

NO CODE = NBR SEALS
V = FKM SEALS

NO CODE = WITHOUT THROTTLE INSERT

B08 = TROTTLE 0.8 MM

B10 = TROTTLE 1.0 MM

B12 = TROTTLE 1.2 MM

Z5L = SQUIRE PLUGS WITH LAMP

N9 = WITH CONCEALED HAND EMERGENCY

G12 = DC12V

G24 = DC24V

W220 = 220V, 50HZ/60HZ

W220R = 220V