



megamount 35FWS / 35

AUTOMATIC TYRE CHANGER
WITH LOCKING CAPACITY
UP TO 25"

HPX
WS

UP to
25"

**BEAD
BREAKER**
UP TO 12"



**DOUBLE
SPEED**
— 2X —


10 bar

Latest generation of Hofmann Megaplan Tyre Changers, designed and manufactured in Italy. With an emphasis on build quality and ergonomics, key features such as intelligently designed turntable, removeable pedal box, and super-duty fully-automatic operation can be enjoyed as standard across all models.



megamount 35FWS / 35

AUTOMATIC TYRE CHANGER
WITH LOCKING CAPACITY
UP TO 25"



UP to
25"

Locking capacity up to 25"

The sturdy square-shaped self-centring turntable has a clamping capacity from 10" to 25" and is characterized by the opposing jaw clamping system with 80 mm diameter cylinders that adapt to all types of rims. The toothed jaws ensure effective clamping also from inside the wheel.



BEAD
BREAKER
UP TO 12"

Bead breaker up to 12"

Ergonomic bead breaker system which enables to operate on large wheels up to 12" width.

Double rotation system

Motor with dual rotation clockwise and counterclockwise and double speed controlled by pedal.
400V/50-60Hz/3ph motor.

DOUBLE
SPEED
— 2X —

Inflating gun

Professional tyre pressure gun with manometer. For a tyre pressure up to max 10 bar.

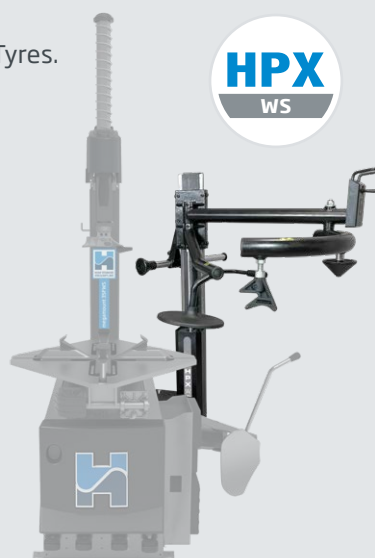
10 bar

HELPING DEVICE SYSTEM HPX-WS

Megamount35FWS is supplied with HPX-WS as standard.

Useful to operate on particularly hard and large-sized Run-Flat and UHP Tyres.

HPX
WS



Standard accessories



Bead lever

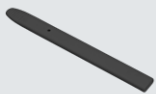


Front head protection (x2)



Rear head protection (x2)

Optional accessories



Plastic lever protection



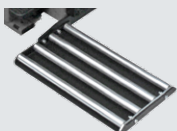
Bead breaker blade protection



4 jaws ALU protection kit



Wheel lift



Roller board



External inflating kit



Run Flat clamp



Jaws for motorcycle wheels 14" ÷ 24"



Jaws for scooter wheels 8" ÷ 14"

Versions on request

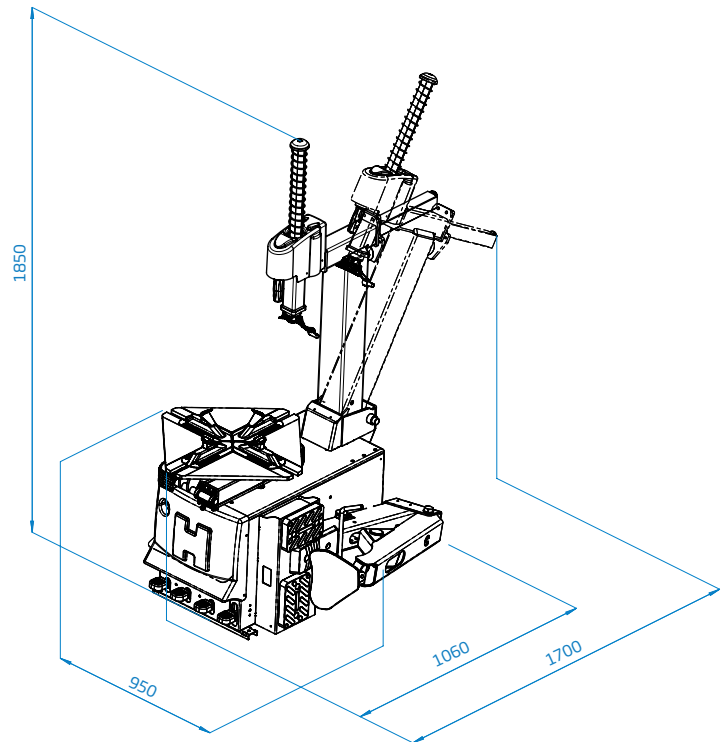
TI version: with an effective inflation device for bead seating integrated in clamping jaws

Pedal-operated inflating version: with manometer and CE-certified inflation pressure limiter

Single speed version: 400V/50-60Hz/3ph

Single speed version: 110V/60Hz/1ph

Single speed version: 220V/50-60Hz/1ph



Technical Data

Clamping capacity	10" ÷ 25" (min ÷ max)
Internal clamping	12" - 25"
External clamping	10" - 22"
Max wheel diameter	1000 mm (39")
Max wheel width	310 mm (12")
Bead breaker force	15000 N
3-Phase	0.75 kW 400V - 50/60 Hz (2 speed)
Turntable speed	8 - 16 rpm (3ph - 2 speed)
Operating pressure	8 - 10 bar (116 - 145 psi)
Noise level	< 70 ± 3 dB (A)
Net weight	210 kg



HOFMANN MEGAPLAN GmbH
Hüttenstrasse 7 - 67550 Worms - Germany
T +49 (0)6242 913 6666 - hm-mail@hofmann-megaplan.com
www.hofmann-megaplan.com