

HYVA HT-TIPPING VALVE SAE

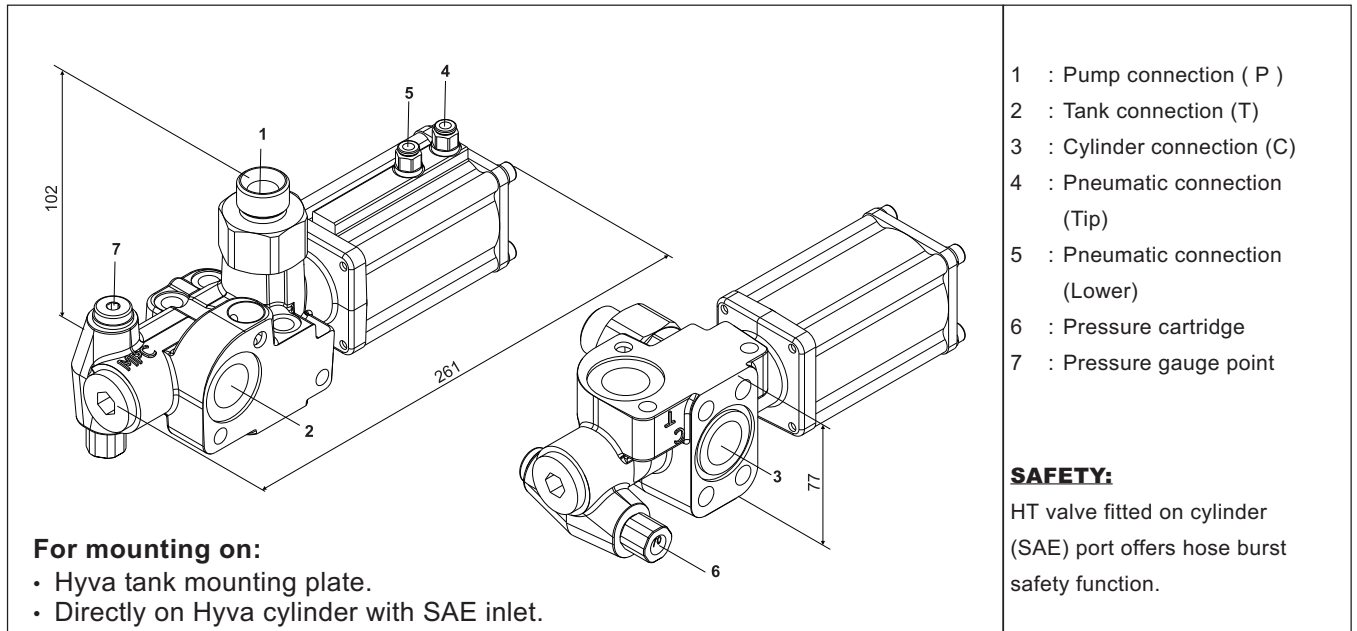


PROPORTIONAL SAE TIPPING VALVE - AIR OPERATING

Hyva

tipping valve type: HT 1150-valve single pressure-3/4" SAE

page # 1 / 2



For mounting on:

- Hyva tank mounting plate.
- Directly on Hyva cylinder with SAE inlet.

- 1 : Pump connection (P)
- 2 : Tank connection (T)
- 3 : Cylinder connection (C)
- 4 : Pneumatic connection (Tip)
- 5 : Pneumatic connection (Lower)
- 6 : Pressure cartridge
- 7 : Pressure gauge point

SAFETY:

HT valve fitted on cylinder (SAE) port offers hose burst safety function.

types

Part no.	description	max. pressure
147 67 213	TIP VALVE HT-SAE-1150-135-P3/4"	135
147 67 215	TIP VALVE HT-SAE-1150-150-P3/4"	150
147 67 217	TIP VALVE HT-SAE-1150-170-P3/4"	170
147 67 219	TIP VALVE HT-SAE-1150-190-P3/4"	190
147 67 222	TIP VALVE HT-SAE-1150-220-P3/4"	220
147 67 225	TIP VALVE HT-SAE-1150-250-P3/4"	250
147 67 228	TIP VALVE HT-SAE-1150-280-P3/4"	280
147 67 235	TIP VALVE HT-SAE-1150-350-P3/4"	350

(Mounting kits are not included)

specifications

type	: Spool valve with pressureless bypass in neutral. Oil flow in lowering position is proportional with pneumatic pilot pressure.
hydraulic connections	: P, T & C = G3/4"
max. peak pressure	: 350 bar
pneumatic pilot pressure	: 6-10 bar
max. advised flow	: 150 L/min. (see Δp -Q characteristic)
max. pressure on T-conn.	: 15 bar
filtration	: $\leq 25 \mu m$ (ISO 18/13)
oil types	: mineral oil (DIN 51524 / 51525)
viscosity range	: 12 / 100 mm ² /s
temperature range	: -25 / + 80 °C
mass	: 3.7 kg

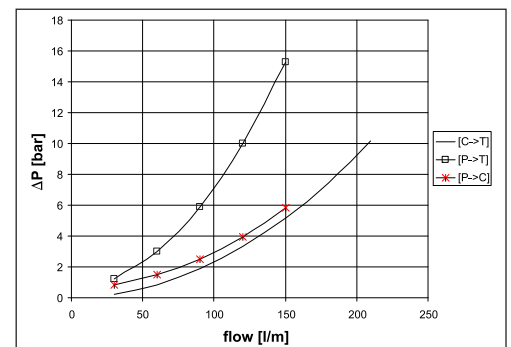
general information

- Mount the valve according to the Hyva mounting instructions.
- Use the correct washers and adapters in the ports to prevent housing deformation. Do not use adapters with tapered threads.
- To further prevent deformation of the valve housing, the mounting plate surface or block must be completely flat and plane.
- Do not weld to the valve.

Δp - Q characteristic

viscosity 30 mm²/s 50°C

This characteristic shows the pressure drop in relation to the flow.



mounting

Direct mounting on the cylinder SAE inlet.

- Use the 4 bolt mounting kit (part nr 14735162).
- Before mounting the valve, remove the plastic plug from the return opening.
- Grease the o-ring lightly before mounting it in the recess, so that it stays in place.
- Mount the valve to the cylinder inlet with the M10 Allen bolts and washers from the mounting kit. Torque: 45 Nm.

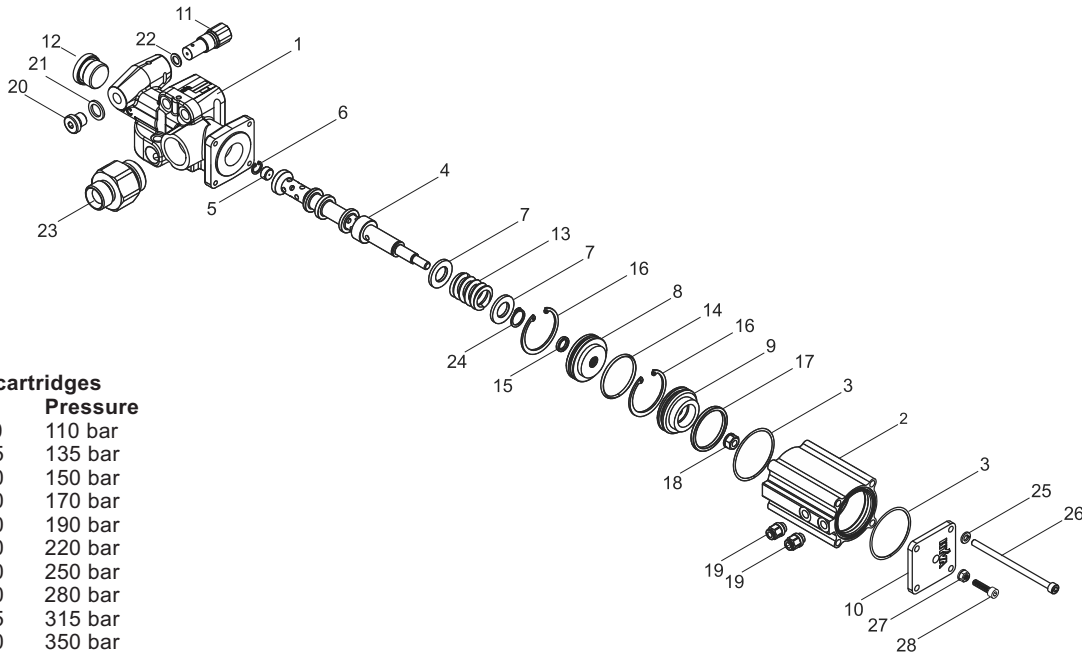
HYVA HT-TIPPING VALVE SAE



PROPORTIONAL SAE TIPPING VALVE - AIR OPERATING

Hyva tipping valve type: HT 1150-valve single pressure-3/4" SAE

page # 2 / 2



Pressure cartridges

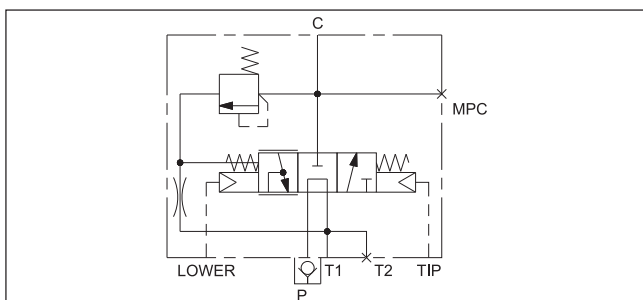
Part no.	Pressure
147 72 110	110 bar
147 72 135	135 bar
147 72 150	150 bar
147 72 170	170 bar
147 72 190	190 bar
147 72 220	220 bar
147 72 250	250 bar
147 72 280	280 bar
147 72 315	315 bar
147 72 350	350 bar

spare parts

No.	Part no.	Description	Qty.
1	147 67 6050	HT-S valve house machined	1
2	147 67 6055	HT-S aluminium head	1
3	012 26 200	O-ring	2
4	147 67 6060	HT-S plunger	1
5	147 67 6065	HT-S closing screw	1
6	017 45 015	circlip	1
7	147 67 6066	HT-S spring disk	2
8	148 45 005	closing plate for PT-valve	1
9	148 45 007	piston air cylinder	1
10	147 67 6070	HT-S cover	1
11	147 71 ...	cartridge pressure relief	1
12	148 45 024	plug	1
13	147 67 6067	HT-S spring	1
14	148 45 013	O-ring	1

No.	Part no.	Description	Qty.
15	148 45 018	quadring	1
16	148 45 019	circlip	2
17	148 45 020	quadring	1
18	148 45 015	sealing nut M8 for PT-valve	1
19	148 10 517	air coupling 1/8"	2
20	148 45 039	plug	1
21	012 06 813	bonded seal	1
22	012 06 840	bonded seal	1
23	147 39 980	non return valve	1
24	150 29 046	circlip	1
25	150 22 015	washer spring	4
26	150 13 639	bolt HSHC	4
27		sealing nut M6	1
28		allenkey bolt M6	1

hydraulic symbol of the HT valve



repair of the tipping valve

The valve should be dismantled in a clean area and using the appropriate tools.

All parts should be thoroughly cleaned before assembly.

The closing plug (pos. 8) is difficult to remove; so we advise to order the air cylinder set. If you want to remove the closing plug yourself; you will need special tools; please ask Hyva for the extended repair instruction.

- O-ring set: (pos. 3,14,15 & 17) = 148 44 010
- Air cylinder set (pos. 2, 8, 14, 15 & 16) = 148 45 103

for specification see page # 1