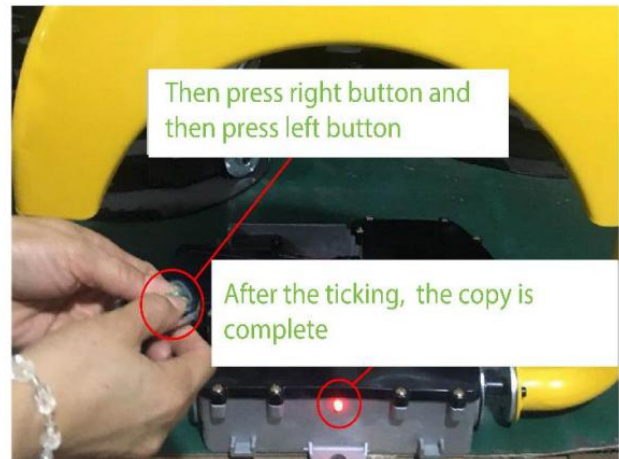
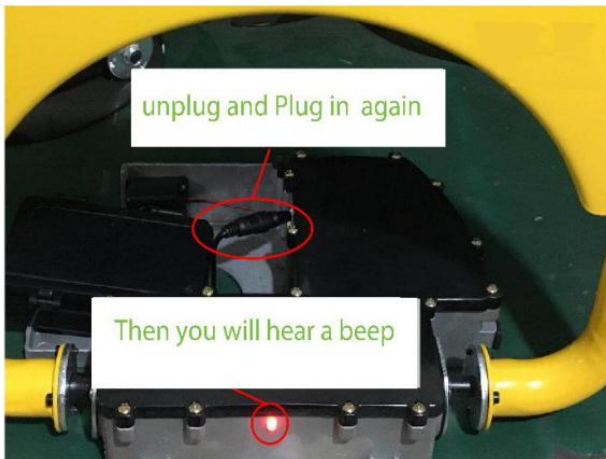


## FAQ for Parking Lock

### About the remote Control

**Q:**How to copy and delete code for **Plock1**?

#### Copy



#### Delete code



**Q:**How many remote controls can be copy at the same time with one **plock1**?

**A:**30 PCS in total.(Please be reminded that using remote simultaneously is not recommended due to signal interference)

**Q:**What if you lose your remote control or broken?

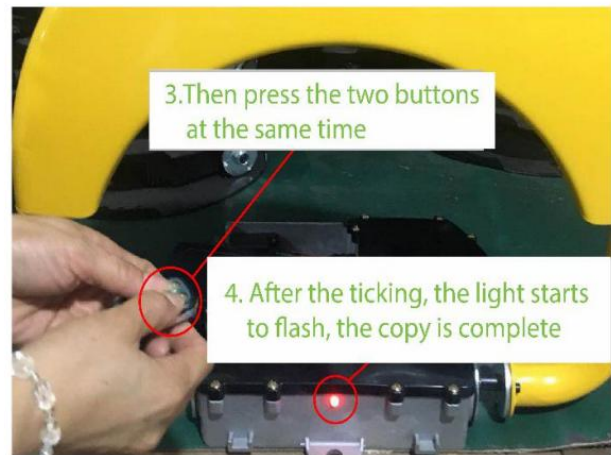
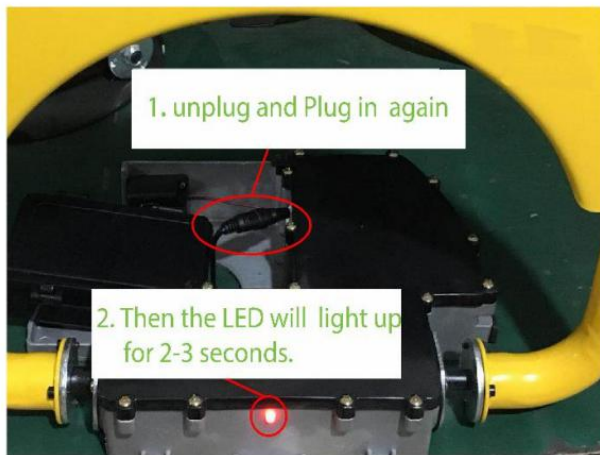
**A:**It is generally recommended to use the manufacturer's standard remote control, please contact to your supplier.

**Q:**What if you need 2 or more remote control?

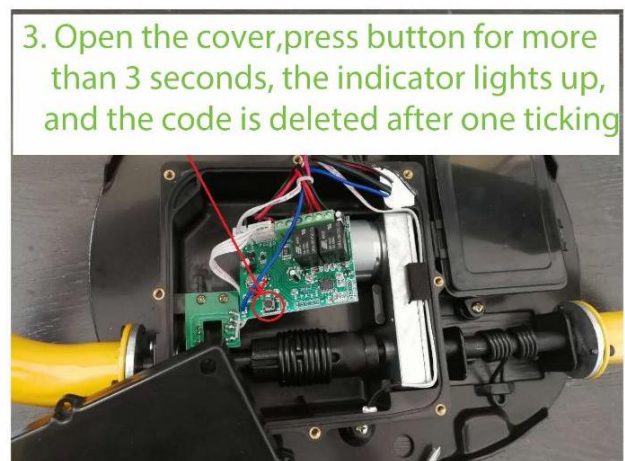
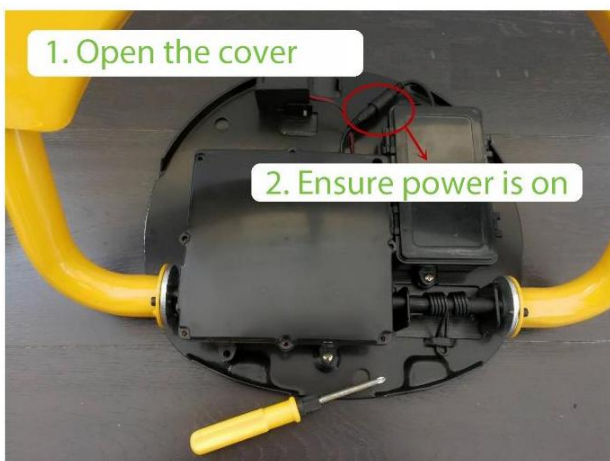
**A:**please buy another one and then copy to use.

**Q:**How to copy and delete code for **Plock2**?

### Copy



### Delete code



**Q:** How many remote controls can be copy at the same with time with one **Plock 2**?

**A:** 30 pcs in total of both sensor and remote.(Please be reminded that using sensor and remote simultaneously is not recommended due to signal interference)

**Q:** What if you lose your remote control or broken?

**A:**It is generally recommended to use the manufacture's standard remote control,please contact your supplier.

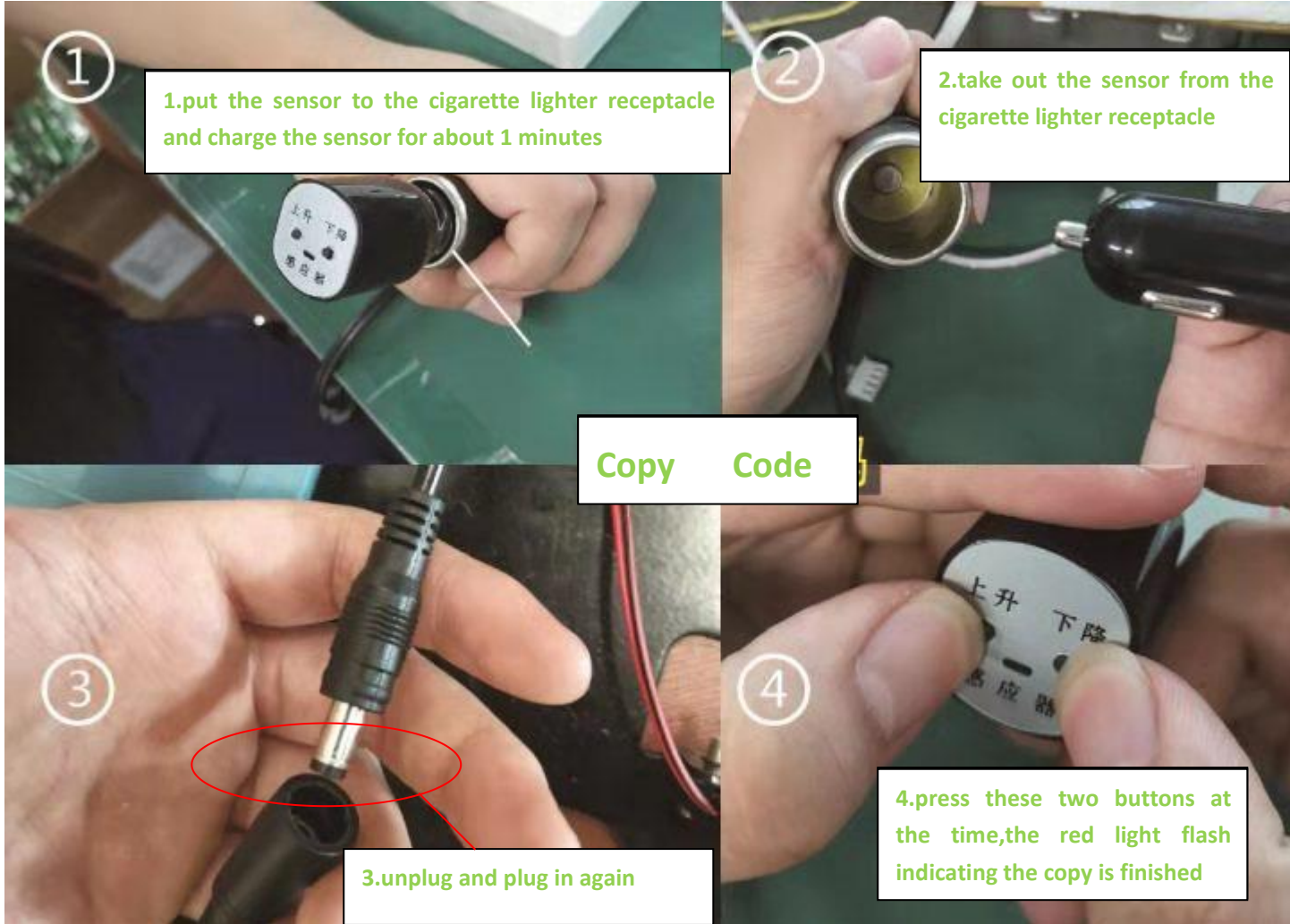
**Q:**What if you need 2 or more remote control?

**A:**please buy another and then copy to use.

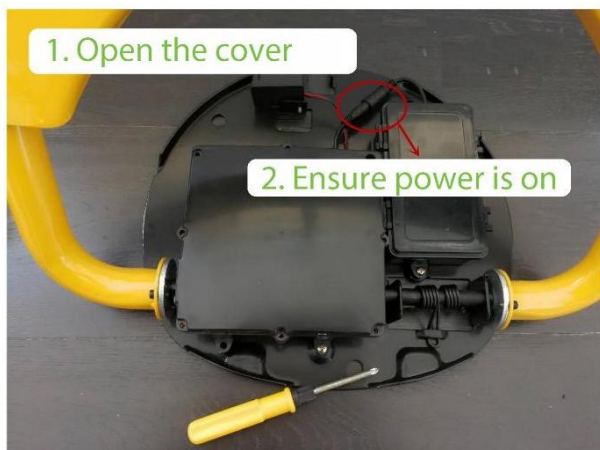
## About the Sensor

Q:How to copy and delete code for sensor of Plock 2?

### Copy



### Delete code



Note: this operation will also delete the code for the remote control.

Q:How many sensor or remote can be matched at the same time with one Plock2?

A:30 pcs in total of both sensor and remote.(Please be reminded that using sensor and remote simultaneously is not recommended due to signal interference)

Q:What if you lose your sensor or broken?

A: It is generally recommended to use the manufacturer's standard sensor,please contact your supplier.

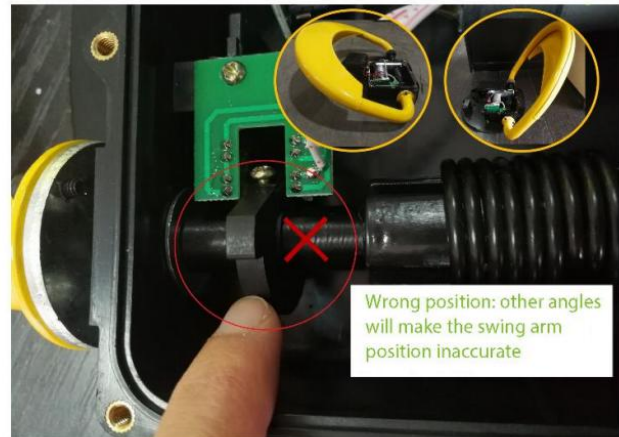
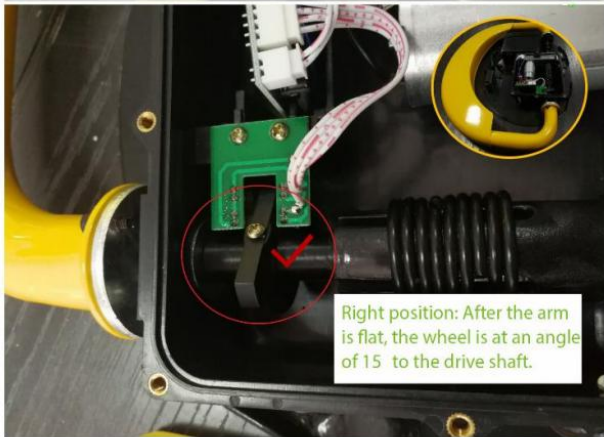
Q:What if you need 2 or more sensors?

A:It is not recommended to use two sensors for one parking lock,because they will interfere with each other.

## About the Arm

How to reset your arm if the arm it's not in place?

### Correction



**Correction**

1. After the power is cut off, lay the swing arm flat and loosen the fixing screws on the wheel.
2. Turn the wheel to make it 15 degrees to the drive shaft
3. After power-on, use the remote control to make the swing arm raises and fall, and observes the position.
4. Fine-tuning the wheel according to the position of the swing arm by use the same operation
5. Tighten the screws after correction

**Q:**How high is the swing arm? Can it be applied to car model such as SUV?

**A:**420mm high,and most European cars have a ground clearance of 100-140mm,most Japanese and Korean cars are 140-180mm,and SUV generally are 180-220mm,So it can be applied to most car models

## About the Battery

The factory default is not equipped with batteries.

**A:**Recommended: LR20 alkaline dry battery(D×4)

(Four times a day can be used 6-8 months,depend on the environment and conditions of use)

**If you want to use the rechargeable battery, and Battery interface matching wiring port**

**A:**Recommended: 6V 7AH,6V 10AH,6V 5AH

(Four times a day can be used 6-8 months,depend on the environment and the battery capacity,and rechargeable battery need to charge once every 3 months)

**Q:**when should you change the battery?

**A:**when the dry battery power decreases and drops to 5.0V,press the remote control up button.During the swing arm rise,the indicator light flashes and the alarm is intermittently alarmed.Remind the user to prepare to replace the dry battery and can continue to use until the rocker moves too slowly.

## About the Keys

Q:what if you lose your key?

A: Please buy a new one with Lock cylinder, and change your old lock cylinder(Please contact the unlocking worker for replacement)

## About the Alarm

Q:How high is the decibel?

A:The specification of the speaker is 80 decibel.

Q:When will the alarm be triggered?

A:An alarm will be triggered if the arm of the lock is being pushed and pulled by external forces.And if the battery is low,alarm will be triggered when the arm rise.

## How to Maintain

You should regularly clean the surface of the dust and garbage,try to ensure that the parking lock clean and dry.

Q:What if your parking lock is soaked in the water for a while?

A:You should open the cover(the inside one), can be use after drying

## How to install

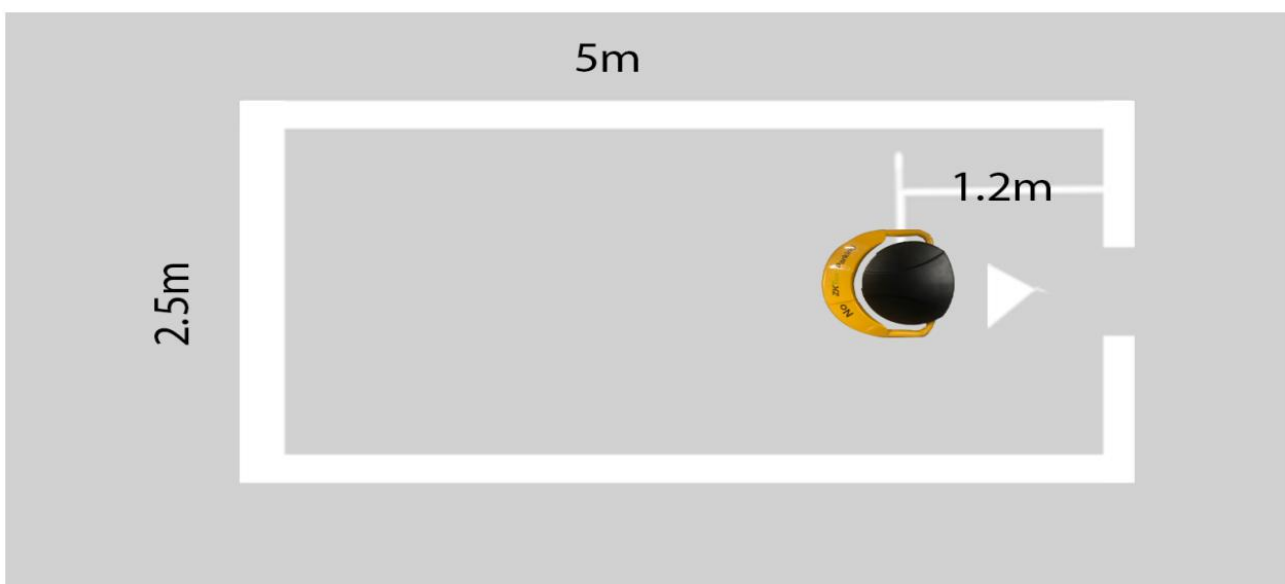
### Installation tool:

Impact drill,drill bit No.12,No.8 expansion screw,hex wrench,ordinary hammer.



**Geological requirements:**The ground should be leveled.If your parking space is muddy,you need to use cement to build a parking lock like the size of 380×360×100mm (length,width and height) to install.

Vehicles entering and leaving the parking space cannot touch the parking lock.It is recommended to install in the middle position between 1.2m and 1.5m in the parking space.The specific installation position is shown in Figure1-1



### Installation step:

1. Pull up the parking lock arm,unlock and remove the top cover.
2. Determine the parking lock installation position and place the parking lock on the position.



3. Use pen to mark the three holes to confirm drilling positions.



4. According to the position of the three mounting holes,with the model M12 drill bit,drill three diameter 12mm,50mm deep hole,and knock the expansion bolt M8 into the hole,and then remove the nuts.



5. Thread the three holes through the expansion bolt and tighten the nuts



6. Connect the battery plug and lock the top cover.

7. Start operating the parking lot. If the parking lock operates normally, that is, the installation is completed.