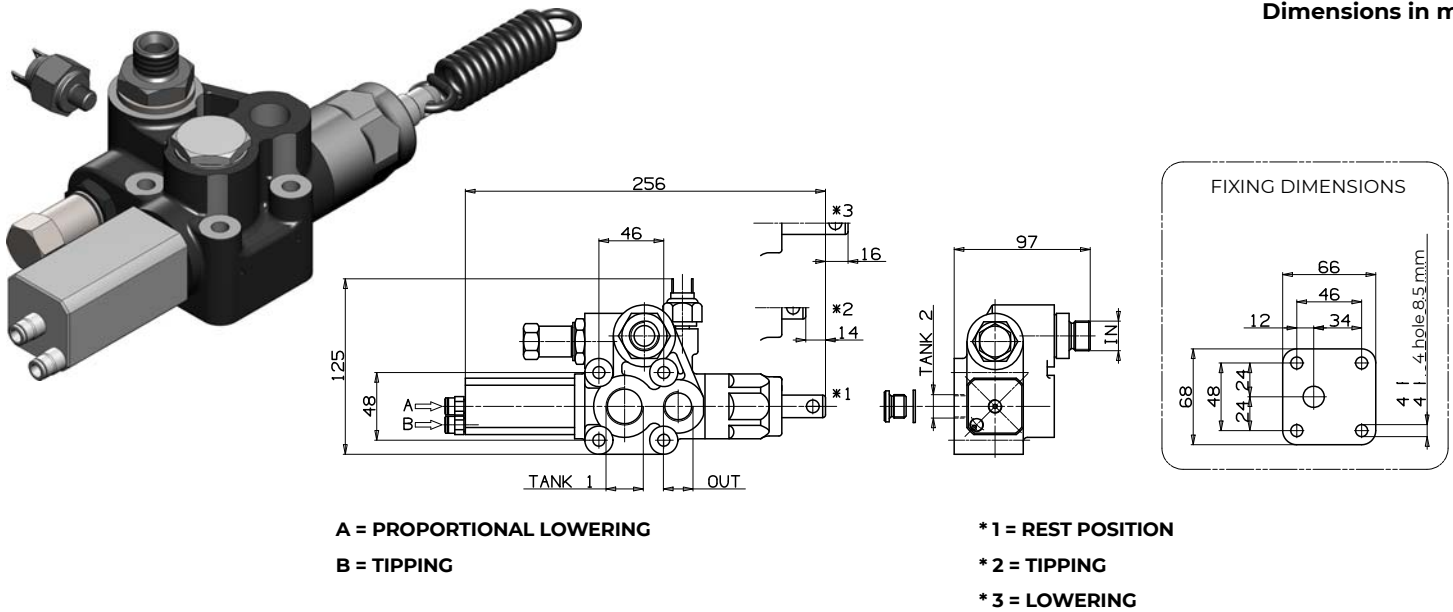


Dimensions in mm



Specifications

Type	14767620	14767622
IN ISO 228	G 1/2"	G 1/2"
TANK 1 ISO 228	G 3/4"	G 3/4"
TANK 2 ISO 228	G 3/8"	G 3/8"
OUT ISO 228	G 1/2"	G 1/2"
Standard pressure setting	140 bar	170 bar
Max pressure setting	300 bar	300 bar
FLOW l/min	80	80
WEIGHT kg	2.5	2.5

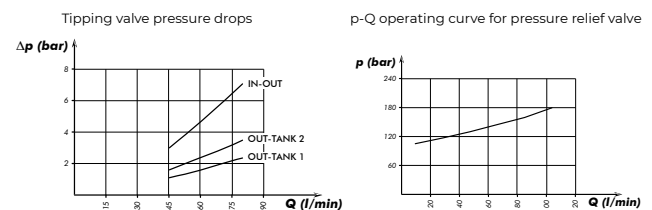
Pneumatic proportional tipping valve to suit medium-light duty tipper trucks. Operated by pneumatic switch series LAM (fast and slow lowering) or by proportional cab controls (proportional lowering).
Open center hydraulic scheme according to CE standards.

- Built-in check and adjustable safety valves (direct type).
- Nodular cast-iron body for pressure up to 400 bar.
- Either Chassis or tank (DSP kit) mounting options.
- Mechanical Direct End-of-stroke with anti-shock spring.
- Ready for pressure signal switch mounting.
- Cataphoresis coated body and nickel spool.
- Compact size.
- Guaranteed for oil temperature range -25÷80 °C, viscosity range 12÷100 cSt and oil filtering 25 µm.

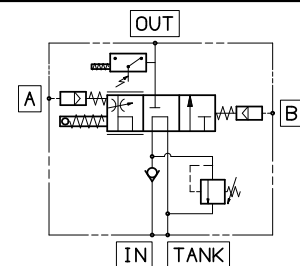
General Info

- Mount the valve according to the Hyva mounting instructions.
- Use the correct washers and adapters in the ports to prevent housing deformation.
- Do not use adapters with tapered threads.
- To further prevent deformation of the valve housing, the mounting plate surface or block must be completely flat and plane.
- Do not weld to the valve.
- Max. torque for bolts to mount the valve is 25 Nm.

Δ p - Q characteristic



Hydraulic Circuit Diagram



Valves are factory preset, the pressure can be set to another value in line with given valve specification and setting instruction TIPPING VALVES-0007.

Optional

Part.no	Description
021416010	Pressure switch