

HYVA CYLINDER

714 05 281



type: UMB 149-5-0980-K258-50-3/4"-HC

tipping weight: 13-23 ton

page # 1 / 2

Stage diameters 149 129 110 91 72	front view cylinder		<table border="0"> <tr><td>A</td><td>205</td></tr> <tr><td>ØC</td><td>170</td></tr> <tr><td>G¹</td><td>425</td></tr> <tr><td>I</td><td>167</td></tr> <tr><td>K¹</td><td>258</td></tr> <tr><td>M¹</td><td>99</td></tr> <tr><td>ØP</td><td>100</td></tr> <tr><td>ØQ</td><td>65</td></tr> <tr><td>S</td><td>187</td></tr> <tr><td>ØW</td><td>50</td></tr> <tr><td>X</td><td>45</td></tr> </table>	A	205	ØC	170	G ¹	425	I	167	K ¹	258	M ¹	99	ØP	100	ØQ	65	S	187	ØW	50	X	45
A	205																								
ØC	170																								
G ¹	425																								
I	167																								
K ¹	258																								
M ¹	99																								
ØP	100																								
ØQ	65																								
S	187																								
ØW	50																								
X	45																								

¹including 20 mm pull-out [tol. -5; +30 mm]

²cylinder is delivered including oil inlet swivel adapter and cup

specifications

total stroke ¹	980 mm
dry weight cylinder only	57 kg
total volume	10.8 L
working volume	9.9 L
maximum pressure	220 bar
maximum pump flow	61 l/min
maximum allowable thrust first stage ³	20.0 ton
oil inlet	3/4" BSP

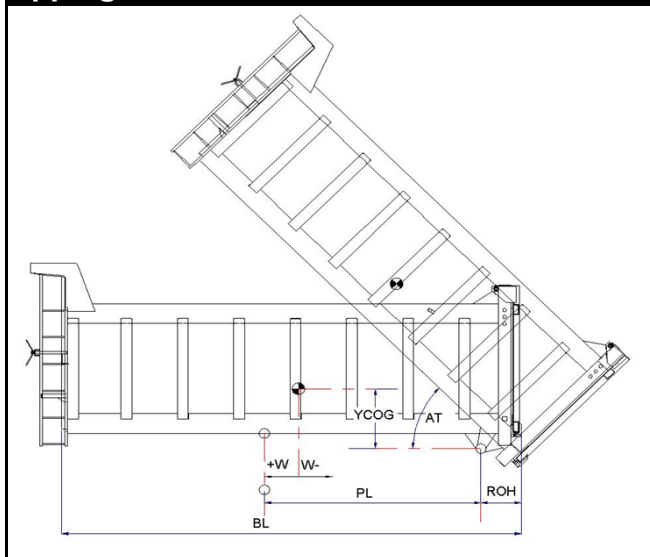
technical notes

This cylinder is a lifting device only and may not be used as a structural member or be subjected to side load. Sideload and/or poor alignment might result in cylinder leakage. Hyva therefore strongly recommends the use of a cradle, even in instances where the cylinder only tips to the rear or to the side. The cylinder is painted black RAL9005. For suitable hydraulic oils, please refer to data sheet OIL-0011. For details of available brackets and cradles, please refer data sheet 015BRA06.

Detailed calculations can be made using the HYVA Tipper Program, freely available from tipper.hyva.com.

³The cylinder thrust on the first stage (from the HYVA Tipper Program) must not exceed the maximum allowable (see specifications above).

tipping view



tipping weight

PL	1280	mm	1130				
YCOG	600	mm	600				
ROH	600	mm	600				
BL	4180	3760	3420	mm	3840	3460	3150
CYL w.r.t. COG (W)	-210	0	170	mm	-190	0	160
	Tipping weight for full stroke of 46°			Tipping weight for full stroke of 52°			
Tipping weight	13	16	21	ton	15	19	23
	Tipping weight for second last stage, up to 37°			Tipping weight for 2nd last stage, up to 42°			
Tipping weight	17	20	23	ton	17	20	23

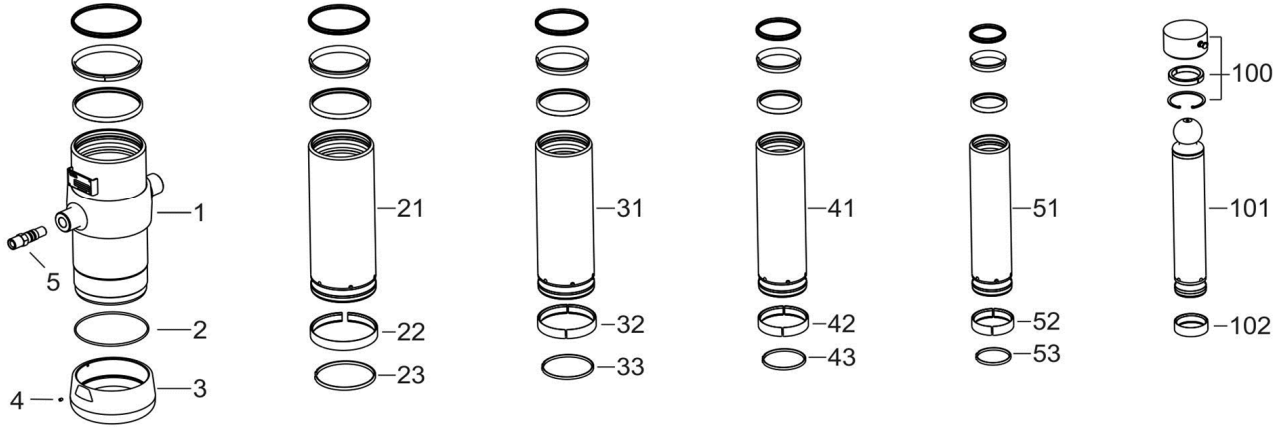
HYVA CYLINDER

714 05 281

type

UMB 149-5-0980-K258-50-3/4"-HC

page # 2 / 2



Spare part list

Pos	Part no.	Description	Qty.
1	73506100	BASE 169-0298-N0159	1
2	01226709	O-RING 165 X 4 NBR 70 SHORE	1
3	73101040	THREADED BOTTOM UM 169	1
4	01792571	LOCKING SCREW M6X12 INT. HEX. DIN 916	1
5	73103002	OIL INLET ADAPTOR UM 3/4"OT+O-RING	1
21	73605101	STAGE 149-0298-HC	1
22	71807149 K	SLIDER FL 149	1
23	71812149 K	LIFTRING FL 149/HP 150	1
31	73604101	STAGE 129-0298-HC	1
32	71807129 K	SLIDER FL 129/GF 129 (2 X 1/2)	1
33	71812129 K	LIFTRING FL 129/HP 129	1
41	73603101	STAGE 110-0298-HC	1
42	71807110 K	SLIDER FL 110/GF 110 (2 X 1/2)	1
43	71812110 K	LIFTRING FL 110	1
51	73602101	STAGE 091-0298-HC	1
52	71807091 K	SLIDER FL 091 (2 X 1/2)	1
53	71812091 K	LIFTRING FL 091	1

Spare part list

Pos	Part no.	Description	Qty.
100	01745102	RETAINER KIT UMB D.65	1
101	73401101	PISTON B 072-0338-HC	1
102	71807072 K	SLIDER FL 072 (2 X 1/2)	1

Seal kit complete

Part no.	Description
719 04 550K	Complete packset: Consists of all packsets with packset grease and o-ring.