

HYVA CYLINDER

714 05 389



type: UMB 149-3-1360-K265-50-3/4"-HC

tipping weight: 22-29 ton

page # 1 / 2

Stage diameters 149 129 110	front view cylinder		A 205 ØC 170 G¹ 706 I 441 K¹ 265 M¹ 106 ØP 110 ØQ 75 S 449 ØW 50 X 45
---	---------------------	--	---

¹including 20 mm pull-out [tol. -5; +30 mm]

²cylinder is delivered including oil inlet swivel adapter and cup

specifications

total stroke ¹	1360 mm
dry weight cylinder only	79 kg
total volume	19.6 L
working volume	18.1 L
maximum pressure	220 bar
maximum pump flow	143 l/min
maximum allowable thrust first stage ³	25.0 ton
oil inlet	3/4" BSP

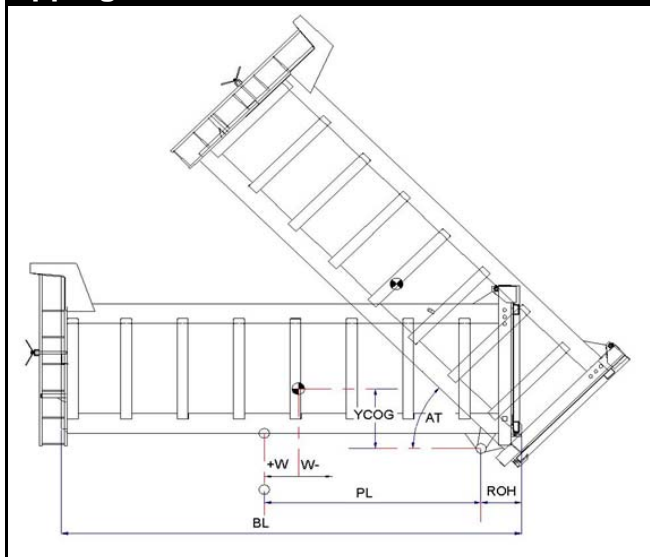
technical notes

This cylinder is a lifting device only and may not be used as a structural member or be subjected to side load. Sideload and/or poor alignment might result in cylinder leakage. Hyva therefore strongly recommends the use of a cradle, even in instances where the cylinder only tips to the rear or to the side. The cylinder is painted black RAL9005. For suitable hydraulic oils, please refer to data sheet OIL-0011. For details of available brackets and cradles, please refer data sheet 015BRA06.

Detailed calculations can be made using the HYVA Tipper Program, freely available from tipper.hyva.com.

³The cylinder thrust on the first stage (from the HYVA Tipper Program) must not exceed the maximum allowable (see specifications above).

tipping view



tipping weight

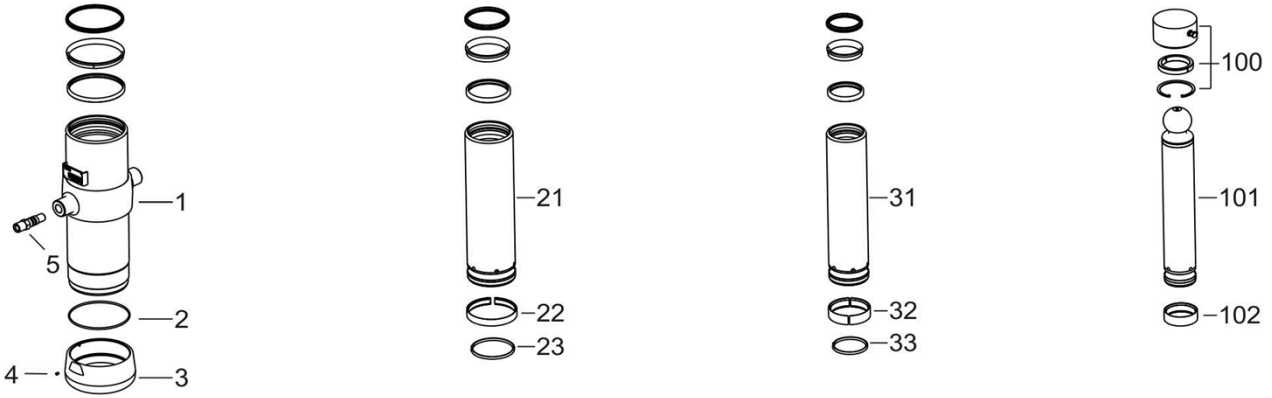
PL	1770	mm	1570				
YCOG	600	mm	600				
ROH	600	mm	600				
BL	5270	4740	4310	mm	4820	4340	3950
CYL w.r.t. COG (W)	-260	0	220	mm	-240	0	200
	Tipping weight for full stroke of 46°				Tipping weight for full stroke of 52°		
Tipping weight	22	25	28	ton	22	25	29
	Tipping weight for second last stage, up to 31°				Tipping weight for 2nd last stage, up to 35°		
Tipping weight	22	25	28	ton	22	25	29

HYVA CYLINDER

714 05 389

type UMB 149-3-1360-K265-50-3/4"-HC

page # 2 / 2



Spare part list

Pos	Part no.	Description	Qty.
1	73506200	BASE 169-0358-N0159	1
2	01226709	O-RING 165 X 4 NBR 70 SHORE	1
3	73101040	THREADED BOTTOM UM 169	1
4	01792571	LOCKING SCREW M6X12 INT. HEX. DIN 916	1
5	73103002	OIL INLET ADAPTOR UM 3/4"OT+O-RING	1
21	73605201	STAGE 149-0358-HC	1
22	71807149 K	SLIDER FL 149	1
23	71812149 K	LIFTRING FL 149/HP 150	1
31	73604201	STAGE 129-0358-HC	1
32	71807129 K	SLIDER FL 129/GF 129 (2 X 1/2)	1
33	71812129 K	LIFTRING FL 129/HP 129	1

Spare part list

Pos	Part no.	Description	Qty.
100	01745103	RETAINER KIT UMB D.75	1
101	73401201	PISTON B 072-0398-HC	1
102	71807110 K	SLIDER FL 110/GF 110 (2 X 1/2)	1

Seal kit complete

Part no.	Description
719 04 531K	Complete packset: Consists of all packsets with packset grease and o-ring.