



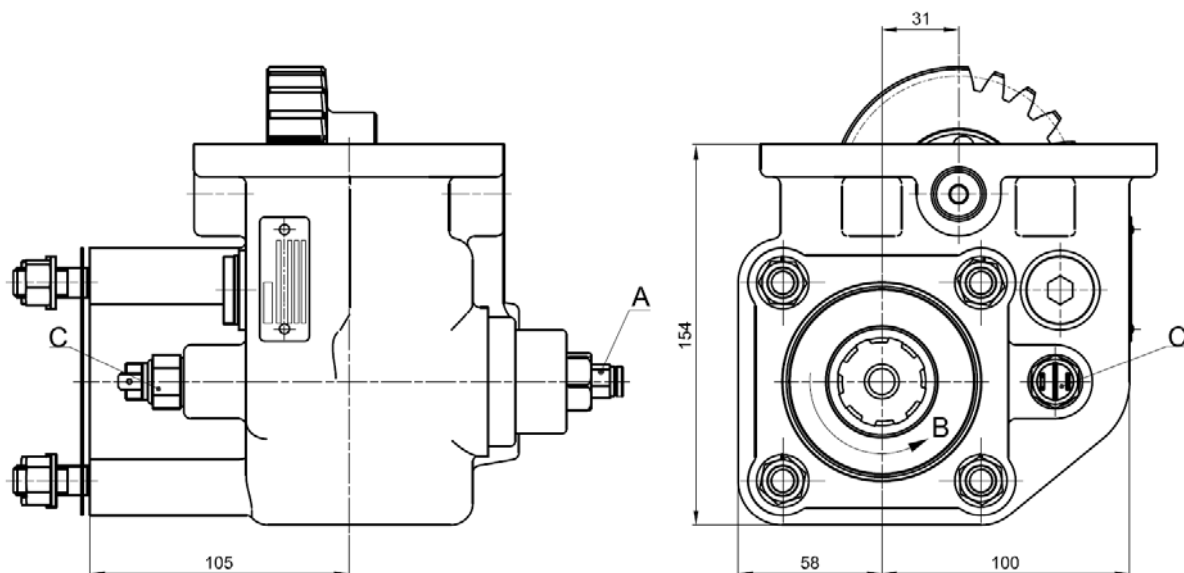
Power Take Offs

Ref. TF18002P

KAMAZ

14 ; 15 - ISO 7653 (EN)

Main Dimensions



A – Pneumatic connection

B – Pump rotation

C – Option: Electric sensor with mechanical driving Ref. TF18002PS

(Dimensions in mm)

Main Data

Continuous Torque (Nm)	320
Intermittent Torque (Nm)	400
Power (at 1000 r.p.m)	48 C.V. / 35 Kw
Mounting Position	Right
Pump Rotation	Right Hand
Weight (Kg)	13
Engine to PTO ratio	
Kamaz 14 1 : 0.690	
Kamaz 15 High: 1 : 0.847 Normal: 1 : 0.690	

CTI TF18002P 1110-1

ABER is constantly engaged in improving its products and, therefore, reserves itself the right to modify without any further notice the characteristics shown. The gear boxes are in constant change; therefore, ABER is not to be held responsible for any damage resulting from wrong application or application of outdated material.



ABER - Embraiaçes e Comandos Hidráulicos - A. B. LDA

Rua Francisco de Almeida, Nº 30 – Vila Nova da Telha – 4470 MAIA - Portugal

Telephone: +351.22.9438070 Fax: +351.22.9420823 e-mail: aber@aber.pt <http://www.aber.pt>

1/1