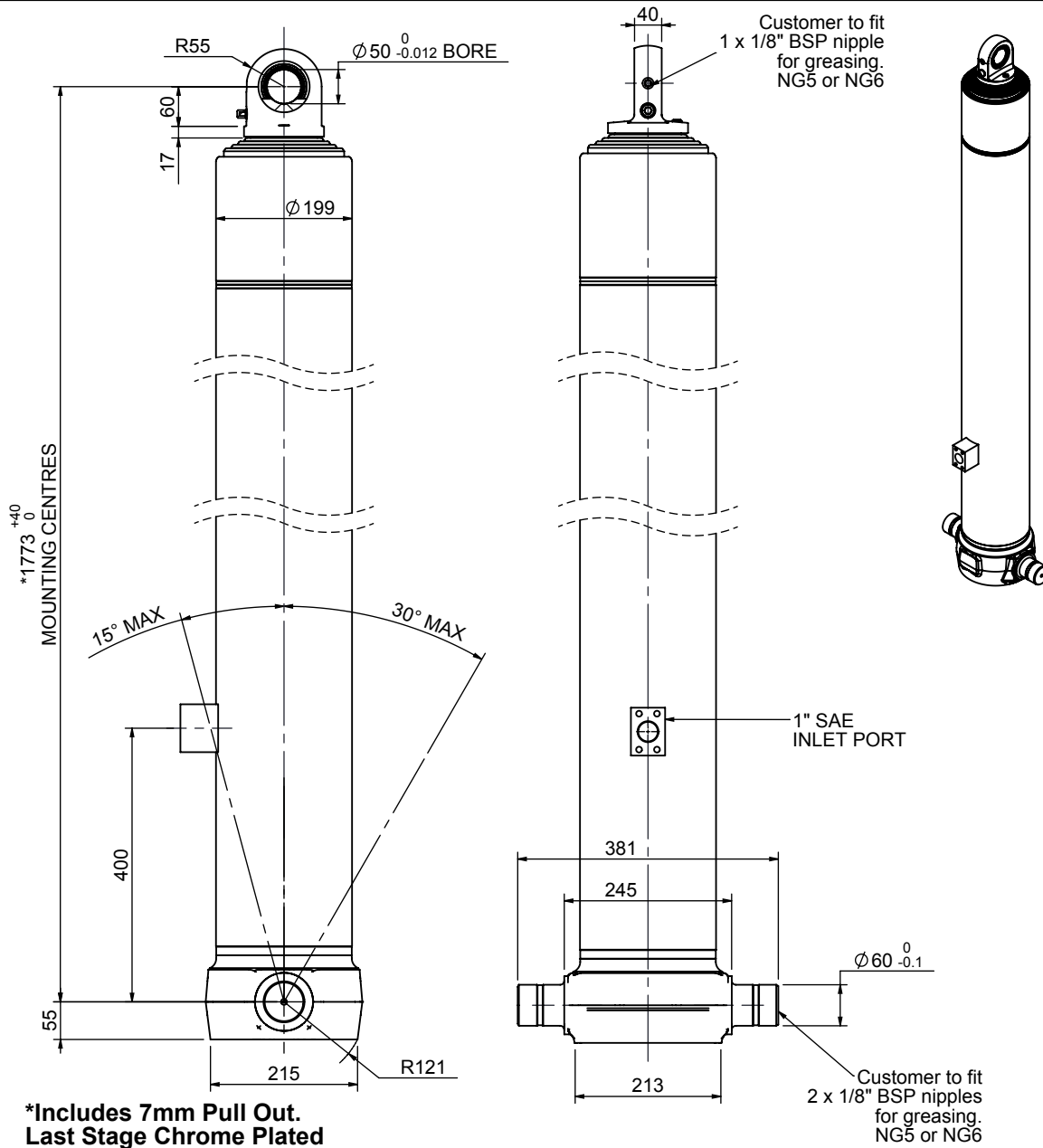


Cylinder 5 stage front end with spherical eye

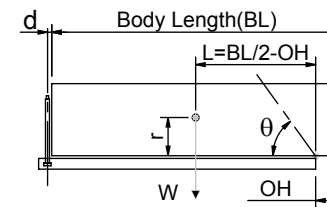


*Includes 7mm Pull Out.
Last Stage Chrome Plated

CS17LS57033S40K02D-203

SPECIFICATION		TIPPING CAPACITY : 23-30 TONNES***		
Stage	Diameter	Length	Stroke	Swept Volume
-	-	-	-	-
0	199	1725	-	-
1	176	1690	1470	36
2	155	1690	1487	28
3	136	1690	1497	22
4	117	1690	1512	16
5	98	1690	1067	8
Total (+5/-10)			7033	110
Final stroke reduced by	450	Priming Volume		23.8
Cylinder Mass (Kg)	242	Total Volume (Litres)		133.8
Maximum Pressure (Bar)	190	Max. first stage thrust		200 KN

***TIPPING CAPACITY AT WORKING PRESSURE



BODY LENGTH (BL)						OH
9000		9500		10000		
25	48°	24	45°	23	42°	150
28	50°	26	47°	25	44°	450
30	52°	28	48°	26	45°	750

d = 0; r = 900; Working Pressure 110 bar

For guidance only;

Higher working pressures and tipping capacities may be possible.

To check your application email - applications@edbro.co.uk

NOTES

1. This cylinder is for lifting purposes only and side load conditions should be avoided
2. Cylinder is painted in black primer paint to RAL9005
3. Refer to www.edbro.com for;-
 - Bracket details
 - Installation instructions that must be observed
 - Correct oil selection
 - An explanation of tipping capacity



JOST UK Ltd
Edbro House, Nelson Street, Bolton, England, BL3 2JJ
Tel +44 (0) 1204 528888 Fax +44 (0) 1204 531957
Email: sales@jost-world.com Web: www.edbro.com

Technical Specifications are subject to change without notice
Date Created/Updated: 28 June 2018
Refer www.edbro.com to confirm latest specification
All dimensions are in 'mm', unless otherwise stated