

HYVA CYLINDER

714 05 429



type: UMB 149-4-1500-K265-50-3/4"-HC

tipping weight: 18-28 ton

page # 1 / 2

Stage diameters 149 129 110 91	front view cylinder		A 205 ØC 170 G¹ 612 I 347 K¹ 265 M¹ 106 ØP 110 ØQ 75 S 357 ØW 50 X 45
--	---------------------	--	---

¹including 20 mm pull-out [tol. -5; +30 mm]

²cylinder is delivered including oil inlet swivel adapter and cup

specifications

total stroke ¹	1500 mm
dry weight cylinder only	75 kg
total volume	18.9 L
working volume	17.4 L
maximum pressure	220 bar
maximum pump flow	98 l/min
maximum allowable thrust first stage ³	25.0 ton
oil inlet	3/4" BSP

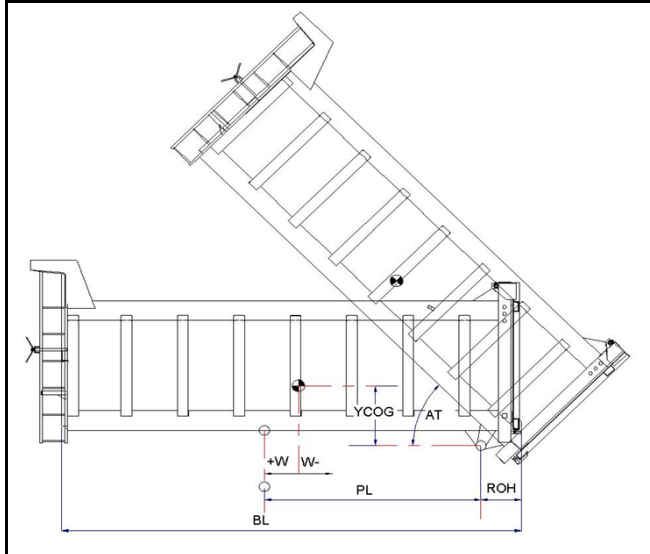
technical notes

This cylinder is a lifting device only and may not be used as a structural member or be subjected to side load. Sideload and/or poor alignment might result in cylinder leakage. Hyva therefore strongly recommends the use of a cradle, even in instances where the cylinder only tips to the rear or to the side. The cylinder is painted black RAL9005. For suitable hydraulic oils, please refer to data sheet OIL-0011. For details of available brackets and cradles, please refer data sheet 015BRA06.

Detailed calculations can be made using the HYVA Tipper Program, freely available from tipper.hyva.com.

³The cylinder thrust on the first stage (from the HYVA Tipper Program) must not exceed the maximum allowable (see specifications above).

tipping view



tipping weight

PL	1960			mm	1730		
YCOG	600			mm	600		
ROH	600			mm	600		
BL	5690	5120	4650	mm	5180	4660	4240
CYL w.r.t. COG (W)	-280	0	230	mm	-260	0	210
	Tipping weight for full stroke of 46°				Tipping weight for full stroke of 52°		
Tipping weight	18	21	25	ton	19	23	28
	Tipping weight for second last stage, up to 35°				Tipping weight for 2nd last stage, up to 39°		
Tipping weight	22	25	28	ton	22	25	28

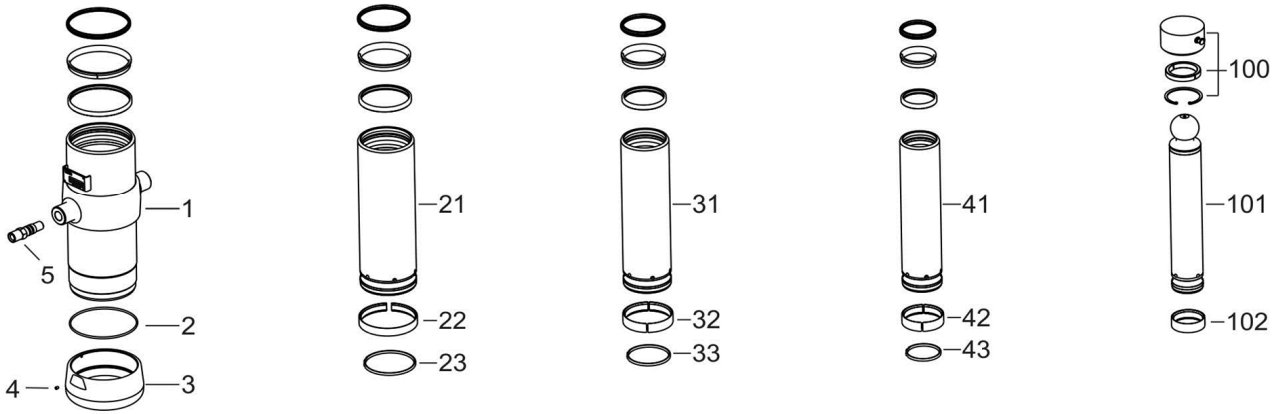
HYVA CYLINDER

714 05 429

type

UMB 149-4-1500-K265-50-3/4"-HC

page # 2 / 2



Spare part list

Pos	Part no.	Description	Qty.
1	73506500	BASE 169-0478-N0159	1
2	01226709	O-RING 165 X 4 NBR 70 SHORE	1
3	73101040	THREADED BOTTOM UM 169	1
4	01792571	LOCKING SCREW M6X12 INT. HEX. DIN 916	1
5	73103002	OIL INLET ADAPTOR UM 3/4"OT+O-RING	1
21	73605501	STAGE 149-0478-HC	1
22	71807149 K	SLIDER FL 149	1
23	71812149 K	LIFTRING FL 149/HP 150	1
31	73604501	STAGE 129-0478-HC	1
32	71807129 K	SLIDER FL 129/GF 129 (2 X 1/2)	1
33	71812129 K	LIFTRING FL 129/HP 129	1
41	73603501	STAGE 110-0478-HC	1
42	71807110 K	SLIDER FL 110/GF 110 (2 X 1/2)	1
43	71812110 K	LIFTRING FL 110	1

Spare part list

Pos	Part no.	Description	Qty.
100	01745103	RETAINER KIT UMB D.75	1
101	73402501	PISTON B 091-0520-HC	1
102	71807091 K	SLIDER FL 091 (2 X 1/2)	1

Seal kit complete

Part no.	Description
719 04 540K	Complete packset: Consists of all packsets with packset grease and o-ring.