

HYVA CYLINDER

714 04 429



type: UMB 129-4-1500-K205-45-1/2"-HC

tipping weight: 11-20 ton

page # 1 / 2

Stage diameters 129 110 91 72	front view cylinder 	A 175 ØC 150 G ¹ 601 I 396 K ¹ 205 M ¹ 99 ØP 100 ØQ 65 S 403 ØW 45 X 45
---	-------------------------	--

¹including 20 mm pull-out [tol. -5; +30 mm]

²cylinder is delivered including oil inlet swivel adapter and cup

specifications

total stroke ¹	1500 mm
dry weight cylinder only	60 kg
total volume	13.7 L
working volume	12.4 L
maximum pressure	220 bar
maximum pump flow	61 l/min
maximum allowable thrust first stage ³	17.5 ton
oil inlet	1/2" BSP

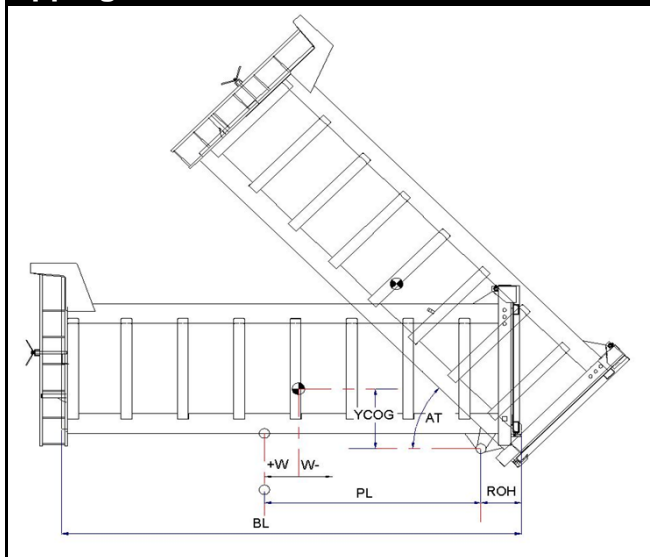
technical notes

This cylinder is a lifting device only and may not be used as a structural member or be subjected to side load. Sideload and/or poor alignment might result in cylinder leakage. Hyva therefore strongly recommends the use of a cradle, even in instances where the cylinder only tips to the rear or to the side. The cylinder is painted black RAL9005. For suitable hydraulic oils, please refer to data sheet OIL-0011. For details of available brackets and cradles, please refer data sheet 015BRA06.

Detailed calculations can be made using the HYVA Tipper Program, freely available from tipper.hyva.com.

³The cylinder thrust on the first stage (from the HYVA Tipper Program) must not exceed the maximum allowable (see specifications above).

tipping view



tipping weight

PL	1960			mm	1730		
YCOG	500			mm	500		
ROH	500			mm	500		
BL	5470	4920	4470	mm	4960	4460	4050
CYL w.r.t. COG (W)	-270	0	220	mm	-250	0	200
	Tipping weight for full stroke of 46°				Tipping weight for full stroke of 52°		
Tipping weight	11	13	15	ton	12	14	16
	Tipping weight for second last stage, up to 35°				Tipping weight for 2nd last stage, up to 39°		
Tipping weight	15	18	20	ton	15	18	20

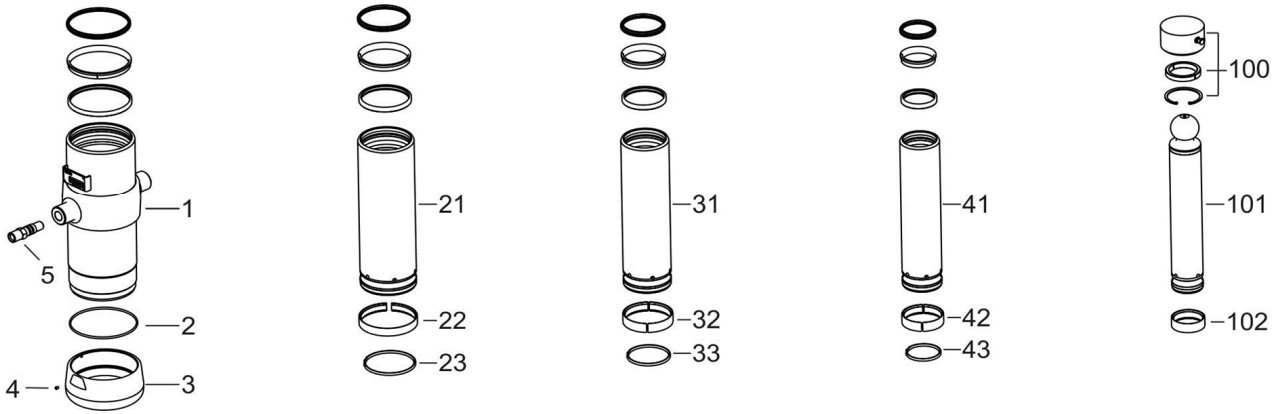
HYVA CYLINDER

714 04 429

type

UMB 129-4-1500-K205-45-1/2"-HC

page # 2 / 2



Spare part list			
Pos	Part no.	Description	Qty.
1	73505500	BASE 149-0478-N0106	1
2	01226680	O-RING 145 X 4 70 SHORE	1
3	73101030	THREADED BOTTOM UM 149	1
4	01792571	LOCKING SCREW M6X12 INT. HEX. DIN 916	1
5	73103000	OIL INLET ADAPTOR UM 1/2"OT+O-RING	1
21	73604501	STAGE 129-0478-HC	1
22	71807129 K	SLIDER FL 129/GF 129 (2 X 1/2)	1
23	71812129 K	LIFTRING FL 129/HP 129	1
31	73603501	STAGE 110-0478-HC	1
32	71807110 K	SLIDER FL 110/GF 110 (2 X 1/2)	1
33	71812110 K	LIFTRING FL 110	1
41	73602501	STAGE 091-0478-HC	1
42	71807091 K	SLIDER FL 091 (2 X 1/2)	1
43	71812091 K	LIFTRING FL 091	1

Spare part list			
Pos	Part no.	Description	Qty.
100	01745102	RETAINER KIT UMB D.65	1
101	73401501	PISTON B 072-0518-HC	1
102	71807072 K	SLIDER FL 072 (2 X 1/2)	1

Seal kit complete	
Part no.	Description
719 04 440K	Complete packset: Consists of all packsets with packset grease and o-ring.