

* incl. 20 [-5; +30] mm pull out

3D model is available on request or www.hyva.com

Specifications		Max. pump flow		Tipping time	
Max. working pressure	280 bar	With KO ¹	102 L/min	With KO ¹	9 sec
Weight	64 kg	With KO ¹ below -20°C	71 L/min	With KO ¹ below -20°C	13 sec
Working volume	16 L			Allowable lowering time	9 sec
Total volume	18 L				
Max. cyl. load (start tipping)	230 kN				

Technical notes

- This cylinder is a lifting device only. • It should not be used as a structural member and should not be subjected to side loads. • Tipping valve must have a pressure relief at the cylinder port set not higher than max. working pressure. • Verify max. cyl. load.
- Working temperature range is between -40°C and +80°C. • Cylinder is painted grey (DB7350) with a min. thickness conforming to the 480 hours neutral salt spray test as per ISO 9227. • Retainer kit: 73202311K • Cradle UH type 1 • ¹ (Hyva) knock-off is required.

Related documentation

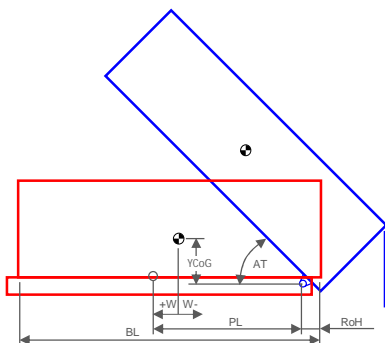
Cradle and bracket options:	015BRA19
Inlet adapters:	HPADAP02
Mounting instructions:	CYL-0043
Oil specifications:	OIL-0011
Spec sheet explanation:	CYL-0041

Configuration

Extension	1	2	3	4	5	6	7	8	9	10	11	Total
Effective diameter [mm]	129	110	93									1661
Stroke* [mm]	539	560	562									

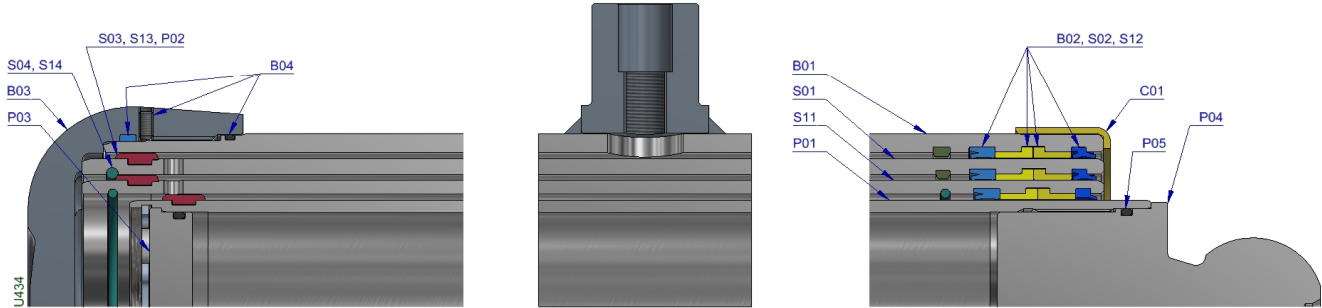
Tipping weight

For detailed tipping calculations please refer to: <https://tipper.hyva.com>



BL	body length [mm]		4400			4200			4000			
W	cyl. w.r.t. CoG [mm]	0	100	200		0	100	200	0	100	200	
PL	pivot length [mm]	1700	1800	1900		1600	1700	1800	1500	1600	1700	
ROH	rear overhang [mm]		500				500			500		
YCOG	vert. pos. CoG [mm]		500				500			500		
At	tip. angle full stroke	59	55	52		62	59	55	66	62	59	
At	tip. angle at stage 110	39	37	35		41	39	37	44	41	39	
	tipping weight	23	23	23		23	23	23	23	23	23	

Tipping weight [ton] at maximum pressure of 280 bar for a vertically mounted cylinder.



Pos.	Part no.	Description	Qty.
P01	73427761	PISTON UH 093-0662-HC	1
P02	73203093K	SLIDER UL 093 (2 X 1/2) A35 L=18	1
P03	73202240K	BOTTOM PLATE SET PISTON UL / UH 093	1
P04	73202045	SPHERE UH 60 FOR PISTON 093	1
P05	70260215K	O-RING 78.97 X 3.53 MM NBR	1

Pos.	Part no.	Description	Qty.
------	----------	-------------	------

S11	73624761	STAGE UH 110-0662-HC	1
S12	73207111K	PACKSET UH 110 - LONG	1
S13	73203110K	SLIDER UL 110 (2 X 1/2) A22-A35 L=18	1
S14	73110110K	INNER STOPRING/LIFTRING UL 110	1

S01	73625761	STAGE UH 129-0662-HC	1
S02	73207130K	PACKSET UH 129 - LONG	1
S03	73203129K	SLIDER FL 129 (2 X 1/2) A22-A35 L=18	1
S04	73110129K	INNER STOPRING/LIFTRING UL 129	1

B01	73524700	BASE UH 149-0653-N0274	1
B02	73207150K	PACKSET UH 149 - LONG	1
B03	73201149K	THREADED BOTTOM UH 149	1
B04	73201649K	REPAIR KIT THREADED BOTTOM UH 149	1

C01	71838994	DUST COVER UM 129	1
-----	----------	-------------------	---

Seal kit complete

73208133K	Consists of all packsets with packset grease and O-rings
-----------	--

Notes

The inner stopring and piston bottom are pre-mounted on spare bases, stage and pistons. Therefore, when ordering new tubes, it is not required to order these parts separately.

For repair instructions see: CYL-0044. Serial no. is located on type plate and above or below trunnion at inlet side.