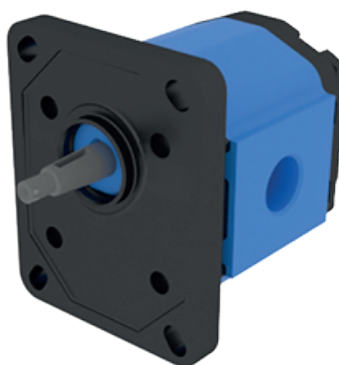




GEAR PUMPS

MODEL GHP



WWW.OLEDDINAMICAMOZIONI.IT

GHP1

GEAR PUMPS
GROUP 1

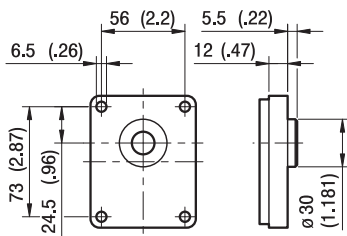
POMPE AD INGRANAGGI



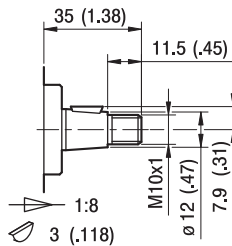
GHP1 SERIES

TYPE	DISPLACEMENT CM ³ / REV	FLOW AT 1500 REV/MIN LITRES/ MIN	MAXIMUM PRESSURE			MAXIMUM SPEED RPM
			P1 BAR	P2 BAR	P3 BAR	
GHP1-D-2	1.4	2.0	270	290	310	6000
GHP1-D-3	2.1	2.9	270	290	310	6000
GHP1-D-4	2.8	3.9	270	290	310	5000
GHP1-D-5	3.5	4.9	270	290	310	5000
GHP1-D-6	4.1	5.9	270	290	310	4000
GHP1-D-7	5.2	7.4	260	275	290	4000
GHP1-D-9	6.2	8.8	260	275	290	3800
GHP1-D-11	7.6	10.8	230	245	260	3200
GHP1-D-13	9.3	13.3	210	225	240	2600
GHP1-D-16	11.0	15.7	200	215	230	2200
GHP1-D-20	13.8	19.7	180	195	210	1800

FLANGE

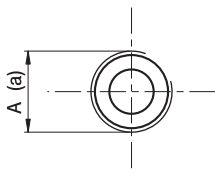


SHAFTS



MAX TORQUE: 100 NM

PORTS



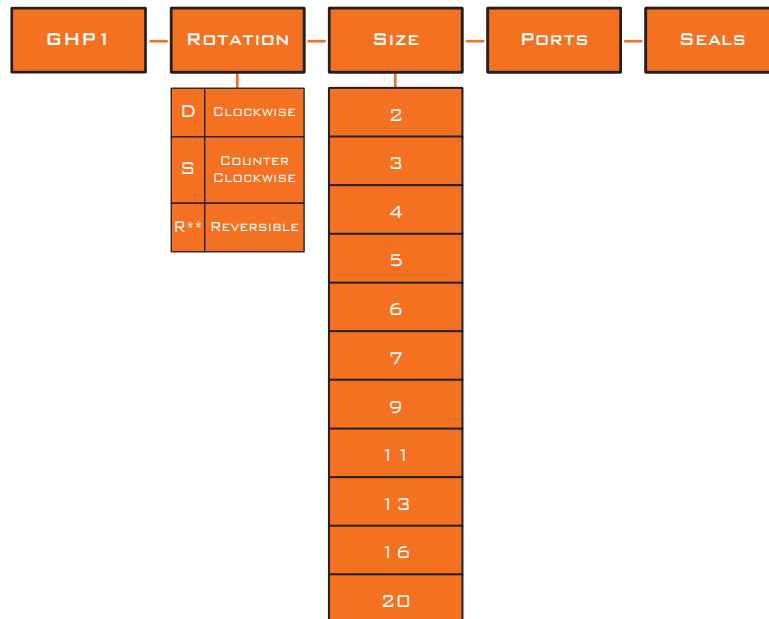
FG

TYPE	INLET	OUTLET
	A	A
GHP1...2 TO GHP1...5	G ³ / ₄	G ³ / ₄
GHP1...6 TO GHP1...20	G ¹ / ₂	G ¹ / ₂

TIGHTENING TORQUES FOR G¹/₂ FITTING: 50 NM. TIGHTENING TORQUES FOR G³/₄ FITTING: 35 NM. PLEASE CHECK WITH THE FITTINGS SUPPLIERS.



ORDER CODE



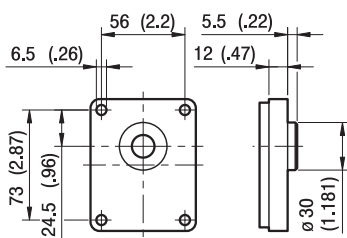
EXAMPLE

GHP1-D-2-FG-V = CLOCKWISE ROTATION, 1.4 CC/REV, EUROPEAN FLANGE, 1:8 TAPERED SHAFT, THREADED PORTS (FG), HIGH TEMPERATURE SEALS (V).

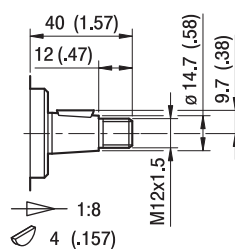
GHP2 SERIES

TYPE	DISPLACEMENT CM ³ /REV	FLOW AT 1500 REV/MIN LITRES/ MIN	MAXIMUM PRESSURE			MAXIMUM SPEED RPM
			P1 BAR	P2 BAR	P3 BAR	
GHP2-D-6	4.5	6.4	280	295	310	4000
GHP2-D-9	6.4	9.1	280	295	310	4000
GHP2-D-10	7.0	10.0	280	295	310	4000
GHP2-D-12	8.3	11.8	280	295	310	3500
GHP2-D-13	9.6	13.7	280	295	310	3000
GHP2-D-16	11.5	16.4	280	295	310	4000
GHP2-D-20	14.1	20.1	260	275	290	4000
GHP2-D-22	16.0	22.8	260	275	290	4500
GHP2-D-25	17.9	25.5	260	275	290	3600
GHP2-D-30	21.1	30.1	230	245	260	3200
GHP2-D-34	23.7	33.7	230	245	260	3000
GHP2-D-37	25.5	36.4	210	225	240	2800
GHP2-D-40	28.2	40.1	200	215	230	2500
GHP2-D-50	35.2	50.2	160	175	190	2500

FLANGE

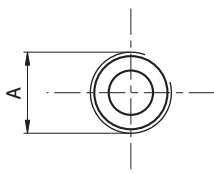


SHAFTS



MAX TORQUE: 200 NM

PORTS



FG

TYPE	INLET	OUTLET
	A	A
HP2...6 TO GHP2...16	G $\frac{1}{2}$	G $\frac{1}{2}$
GM2...20 TO GHM2..40	G $\frac{3}{4}$	G $\frac{1}{2}$

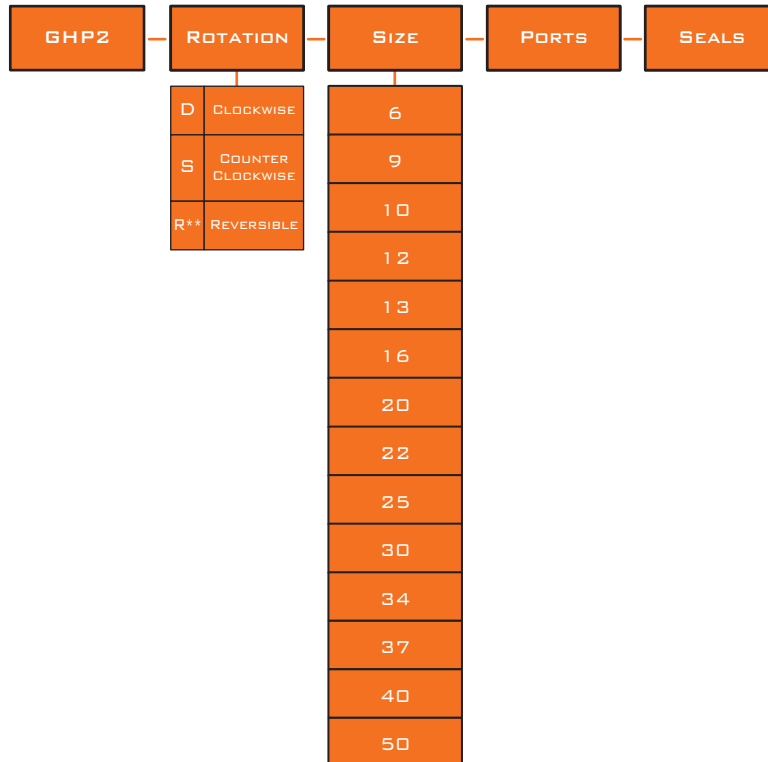
TIGHTENING TORQUES FOR G1/2 FITTING: 50 NM.

TIGHTENING TORQUES FOR G3/4 FITTING: 60 NM.

PLEASE CHECK WITH THE FITTINGS SUPPLIERS.



ORDER CODE



EXAMPLE

GHP2-D-25-FG-V = CLOCKWISE ROTATION, 17.9 CC/REV, EUROPEAN FLANGE, 1:8 TAPERED SHAFT, THREADED PORTS (FG), HIGH TEMPERATURE SEALS (V).

GHP3

GEAR PUMPS
GROUP 3

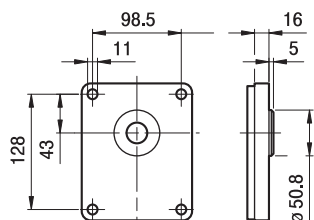
POMPE AD INGRANAGGI



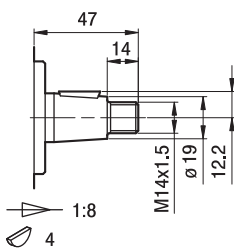
GHP3 SERIES

TYPE	DISPLACEMENT	FLOW AT 1500 REV/MIN	MAXIMUM PRESSURE			MAXIMUM SPEED
			P1	P2	P3	
	CM ³ / REV	LITRES/ MIN	BAR	BAR	BAR	RPM
GHP3-D-30	20	29	280	295	310	3500
GHP3-D-33	22	31	280	295	310	3500
GHP3-D-40	26	37	280	295	310	3000
GHP3-D-50	33	48	270	285	300	3000
GHP3-D-60	39	56	260	275	290	3000
GHP3-D-66	44	62	250	265	280	2800
GHP3-D-80	52	74	230	245	260	2400
GHP3-D-94	61	87	210	225	240	2800
GHP3-D-110	71	101	200	215	230	2500
GHP3-D-120	78	112	180	195	210	2300
GHP3-D-135	87	124	160	175	190	2000

FLANGE

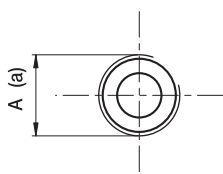


SHAFTS



MAX TORQUE: 300 NM

PORTS



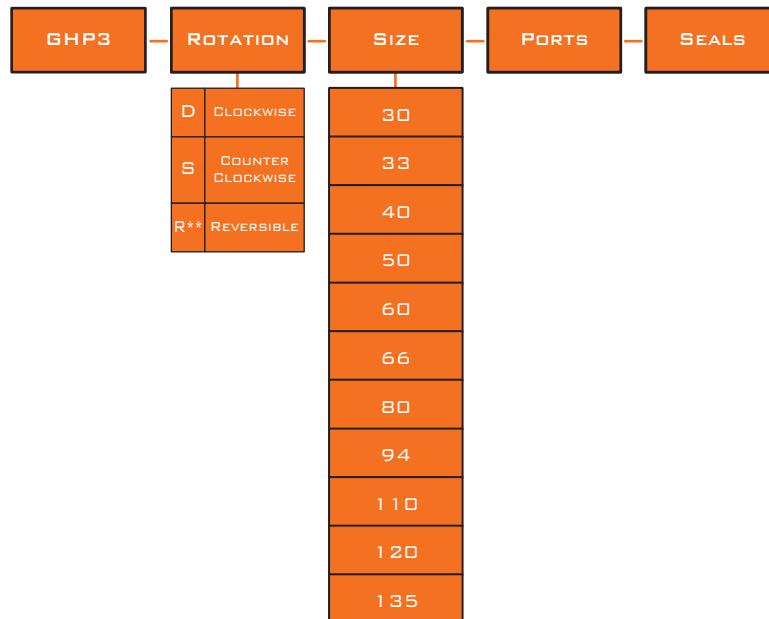
FG

TYPE	INLET	OUTLET
GHP3...30 TO GHP3...33	A	A
GHP3...40 TO GHP3...60	G $\frac{3}{4}$	G $\frac{3}{4}$
GHP3...66 TO GHP3...94	G1	G1
GHP3...110 TO GHP3...135	G1 $\frac{1}{2}$	G1 $\frac{1}{2}$

TIGHTENING TORQUES FOR G $\frac{3}{4}$ FITTING: 60 NM. TIGHTENING TORQUES FOR G1 FITTING: 70 NM. TIGHTENING TORQUES FOR G1 $\frac{1}{4}$ FITTING: 80 NM. TIGHTENING TORQUES FOR G1 $\frac{1}{2}$ FITTING: 90 NM. PLEASE CHECK WITH THE FITTINGS SUPPLIERS.



ORDER CODE



EXAMPLE

GHP3-D-50-FG-V = CLOCKWISE ROTATION, 33 CC/REV, EUROPEAN FLANGE, 1:8 TAPERED SHAFT, THREADED PORTS (FG), HIGH TEMPERATURE SEALS (V).