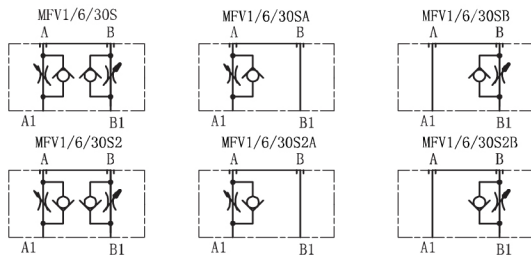


# MFV

## MFV SERIES MODULAR THROTTLE CHECK VALVES



### SYMBOL

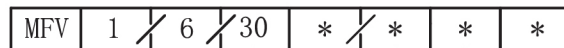


MFV series modular check/throttle valves are used to restrict flow in one direction while allowing free-flow .

### Technical data

Model	MFV
Max flow rate (L/min)	40
Operating pressure (MPa)	31.5
Valve body ( Material ) Surface treatment	casting phosphating surface
Oil cleanliness	NAS class 1638 ISO4406 class 20/18/15

### Ordering Details



Model

Threaded connections 1=G3/8

Size: 6

Series number 30 = Size6

S=Meter-in control;S2=Meter-out control

For further details

No code=NBR seals  
V=FPM seals

No code = A and B ports with throttle valves  
A = A ports with throttle valve  
B = B ports with throttle valve

External Dimensions and Fittings

