

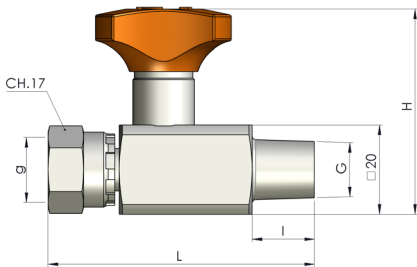


I rubinetti esclusori sono normalmente utilizzati a protezione del manometro. Doppia funzione:  
- Smorzare lo shock della pressione in fase di apertura  
- Isolare lo strumento dalla linea in pressione  
Il dado girevole permette al manometro di essere orientato a piacimento e la presenza dell'OR al suo interno impedisce il trafilemento di fluidi tra il manometro e l'esclusore.

The gauge-isolator valves are normally used to protect the pressure gauge with a double function:  
- To dampen the pressure surge during the opening  
- To isolate the instrument from the system's pressure line  
The gauge can be oriented thanks to the rotating swivel nut and the internal o-ring here inserted prevents any fluid leakage between the gauge and the fitting.

### Esclusore attacco diritto girevole

#### Gauge-isolator valve swivel straight connection



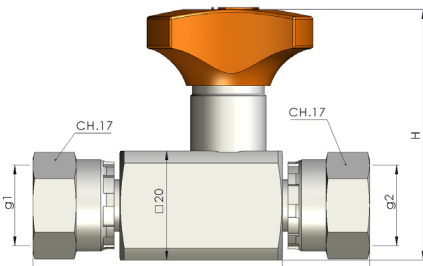
G	g	H	L	I	PN [bar]	Codice/Ref.
ISO 7/1 R 1/4" *	ISO 228 G1/4" #	46	60	14	400	ES180ZL
ISO 228 G1/4" 60°	ISO 228 G1/4" #	46	60	14	400	ES180G14ZL

#Tenuta per manometro con o-ring/  
gauge sealing with o-ring

\* Disponibili in acciaio inossidabile/ Available in Stainless steel

### Esclusore attacco diritto doppia femmina girevole

#### Gauge-isolator valve double swivel straight connection



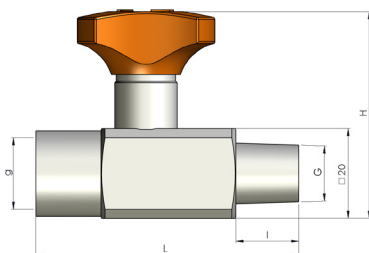
g1	g2	H	L	I	PN [bar]	Codice/Ref.
ISO 228 G1/4" **	ISO 228 G1/4" #	46	62	16	400	ES18GZL
ISO 228 G1/4" #	ISO 228 G1/4" 60°	46	55.5	16	400	ES18GFZL

#Tenuta per manometro con o-ring/  
gauge sealing with o-ring

\* Disponibili in acciaio inossidabile/ Available in Stainless steel

### Esclusore attacco diritto fisso

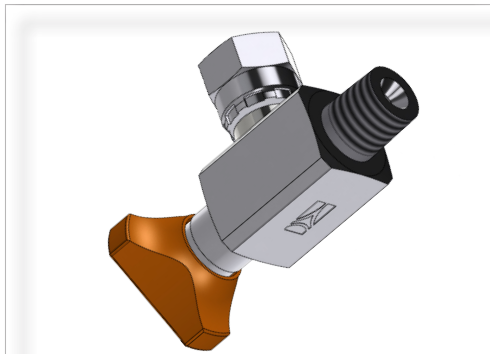
#### Gauge-isolator valve fixed straight connection



G	g	H	L	I	PN [bar]	Codice/Ref.
ISO 7/1 R 1/4"	ISO 228 G1/4"	46	58.5	14	400	ES18FZL
ISO 7/1 R 1/4"	ISO 7/1 R 1/4"	46	58.5	14	400	ES18FRZL
1/4" - 18 NPTF	1/4" - 18 NPTF	46	58.5	14	400	ES18FNZL



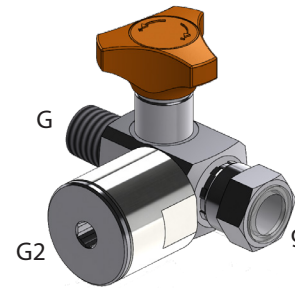
Caratteristiche generiche / General features



- Zincato superfilamente
- Identificazione produttore attraverso il logo
- Coppia di serraggio con manometro = 15Nm
- Superficially zinc-plated
- Manufacturer's identification through our logo
- Tightening torque with gauge = 15Nm

Esclusore attacco 3 vie

Gauge-isolator valve 3-way connection

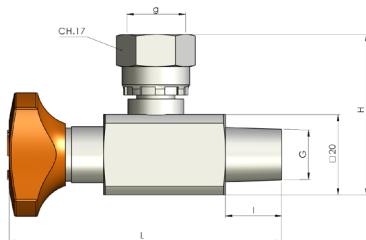


G	g	G2	PN [bar]	Codice/Ref.
ISO 7/1 R 1/4"	ISO 228 G1/4" #	ISO 228 G1/2"	400	ES180G12Z

#Tenuta per manometro con o-ring/  
gauge sealing with o-ring

Esclusore attacco 90°

Gauge-isolator valve 90° connection



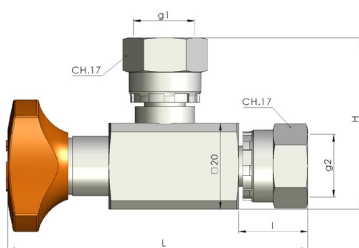
G	g	H	L	I	PN [bar]	Codice/Ref.
ISO 7/1 R 1/4" *	ISO 228 G1/4" #	40	68	14	400	ES090ZL
ISO 228 G1/4" 60°	ISO 228 G1/4" #	40	68	14	400	ES090G14ZL

#Tenuta per manometro con o-ring/  
gauge sealing with o-ring

\* Disponibili in acciaio inossidabile/ Available in Stainless steel

Esclusore attacco 90° doppia femmina girevole

Gauge-isolator valve 90° double swivel connection



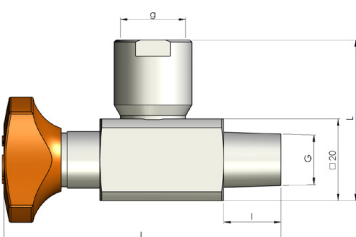
g1	g2	H	L	I	PN [bar]	Codice/Ref.
ISO 228 G1/4" **	ISO 228 G1/4" #	40	68	16	400	ES09GZL
ISO 228 G1/4" #	ISO 228 G1/4" 60°	40	68	16	400	ES09GFZL

#Tenuta per manometro con o-ring/  
gauge sealing with o-ring

\* Disponibili in acciaio inossidabile/ Available in Stainless steel

Esclusore attacco fisso 90°

Gauge-isolator valve fixed 90° connection



G	g	H	L	I	PN [bar]	Codice/Ref.
ISO 7/1 R 1/4"	ISO 228 G1/4"	40	68	14	400	ES09FZL
1/4" - 18 NPTF	1/4" - 18 NPTF	40	68	14	400	ES09FNZL