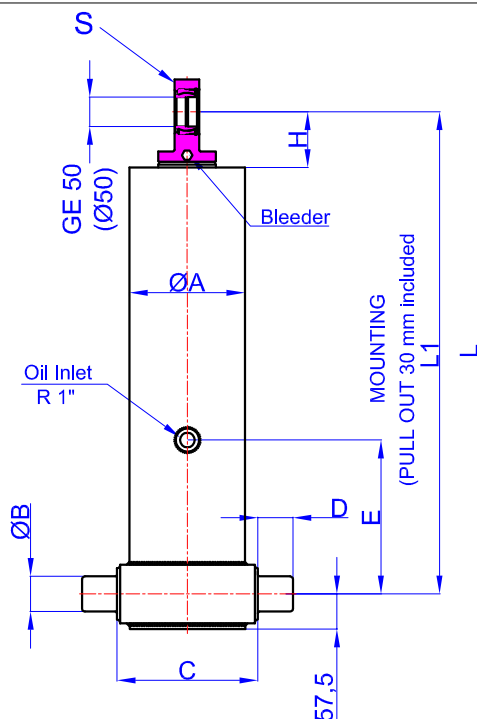


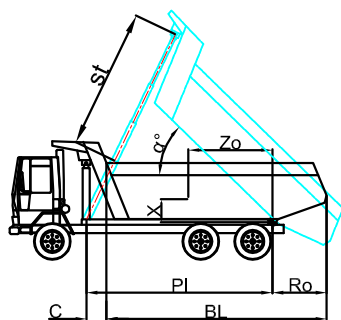
**GHS 155 x 4 x 5140 C**

**Stock Code : 43155451403**  
**Reference No : 01-001**



- A : 175 mm
- B : 60 mm
- C : 215 mm
- D : 60 mm
- E : 350 mm
- H : 95 mm
- L : 1600 mm
- \*L1 : 1630 mm
- S : 42 mm

\* Inc 30 mm pull out :  
 tolerance +20 -0  
 Hard Chromed all stages  
 Working Pressure : 170 Bar  
 Max. Working Pressure : 190 Bar  
 All Cylinder Materials are St  
 52 Cold Drawn Tubes



STAGE	1	2	3	4	5	6	7	8	TOTAL
EFFECTIVE DIAMETER (mm)	Ø154,5	Ø135	Ø116	Ø98					
STROKE	1285	1285	1285	1285					5140
OIL DISPLACEMENT (L)	25,5	19,5	14,5	10,5					78,5
THRUST AT 170 BAR (TONS)	31	24	18	12					

BL (body length)	6600			6400			6200		
Ro (rear overhang)	200	500	800	200	500	800	200	500	800
alpha°	45	47	50	46	49	52	48	51	54
Ycog (vert. pos. centre of gravity)	600								
PI (Pivot length)	33	37	42	34	38	43	35	39	46
alpha° = st x 60 / PI	36	40	47	37	42	50	39	44	53
	39	45	54	41	48	59	43	51	63
st	4950	4935	5000	4906	4981	5026	4960	5015	5040

Weight : 196 Kg

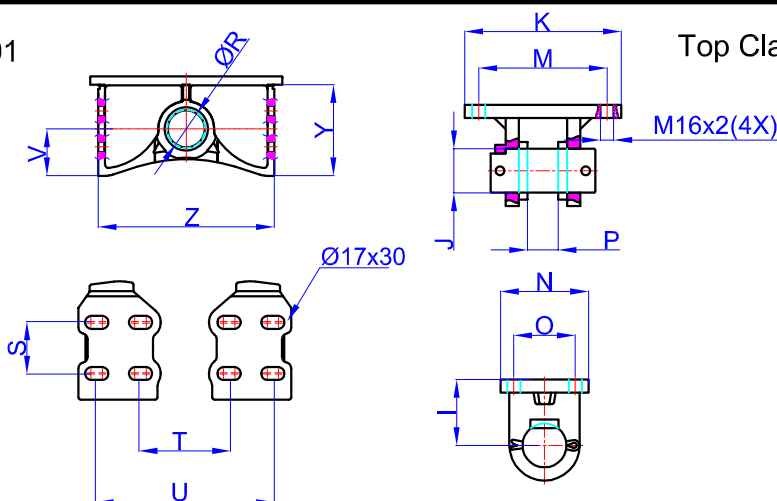
Drawing No : 43155451403-02-001

**Bracket : 47000017-0001**

- R : 60,8 mm
- S : 70 mm
- T : 193 mm
- U : 313 mm
- V : 76 mm
- Y : 148 mm
- Z : 286 mm

\* Bracket are optional

Weight : 9,5 Kg



**Top Clavis : 47000026-02-002**

- I : 85 mm
- J : 50 mm
- K : 216 mm
- M : 184 mm
- N : 125 mm
- O : 95 mm
- P : 39 mm

\* Bracket are optional