



**INNOVATION
DEVELOP ENTERPRISING**

奋力创新 开拓进取



温岭市力拓机电有限公司

地址：浙江省台州市温岭市城南镇中心城区

WENLING LITUO MECHANICAL & ELECTRICAL CO.,LTD.

Add: Centre of Chengnan Town, Wenling, Taizhou, Zhejiang

Tel:+86-576-8629 5188 8629 5189 Fax:+86-576-8628 5389

Mob:+86-189 6859 5188 136 7668 3688 E-mail:lituojidian@163.com

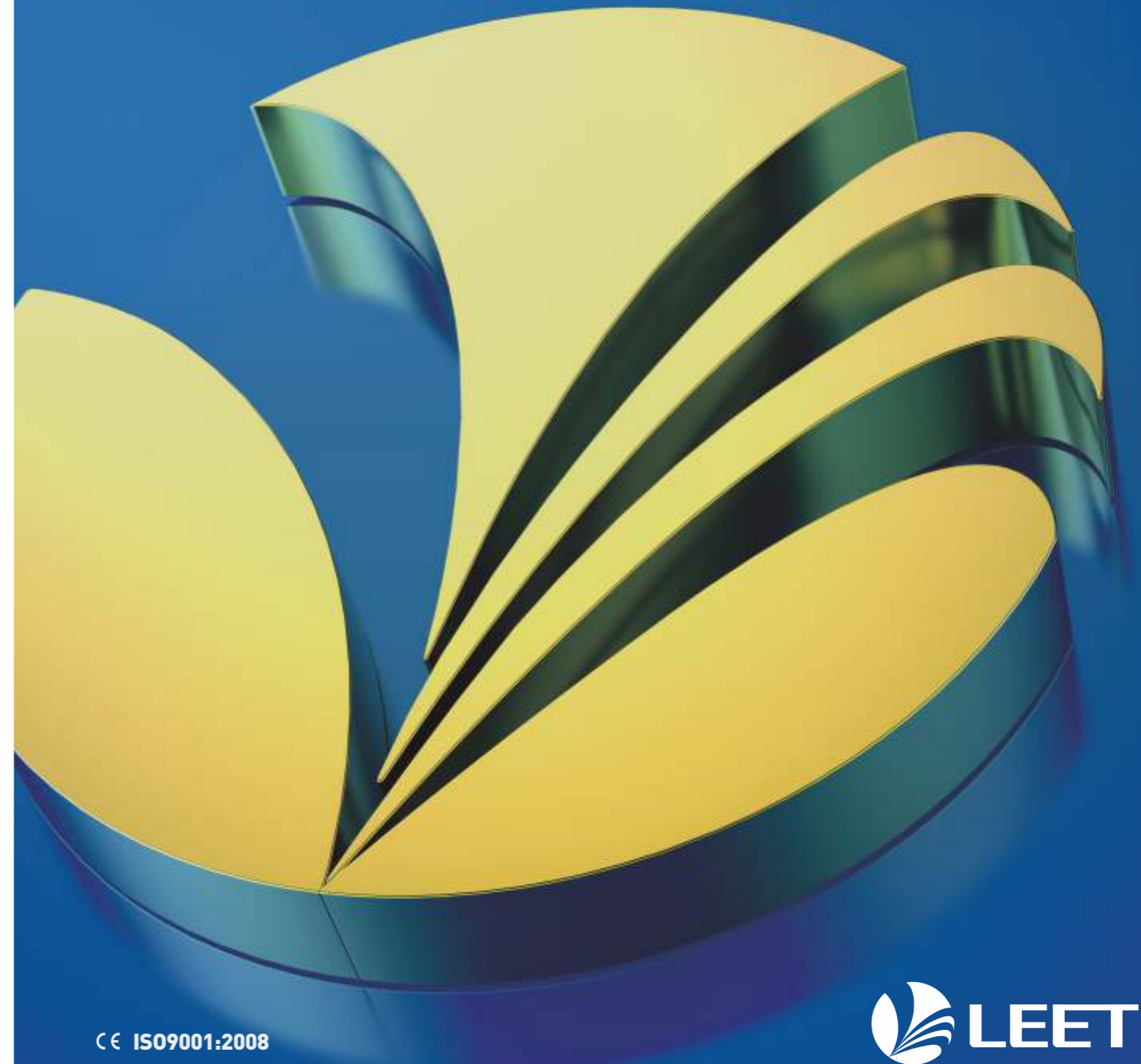
www.lituojd.com

注：本目录内所有系列产品说明、数据和实际之间可能存在误差，请以实际产品为准。如有更改，恕不另行通知。

Note: this directory all series of products, there may be errors between data and actual, please refer to our actual product.
Are subject to change without prior notice.

LITUO

MECHANICAL & ELECTRICAL
CO.,LTD. 温岭市力拓机电有限公司



CE ISO9001:2008



LITUO

China

力拓中国

WENLING + LITUO

奋力创新，开拓进取

BRIEF INTRODUCTION

企业简介

温岭市力拓机电有限公司位于风景秀丽、交通便利的海滨新兴城市浙江台州，是一家专业从事真空泵和制冷工具的研究、开发、制造、销售为一体的现代化企业，拥有一支十多年从事研发、生产真空泵的专业团队和先进的检测、实验设备。公司秉承“奋力创新，开拓进取”的企业宗旨，坚持“精益求精，争创一流”的质量方针，建立了一套完整的生产和质量管理体系。我公司生产的真空泵，从产品性能乃至外观设计均达到国际先进水平。产品广泛应用于制冷维修、印刷机械、医疗器械、电子、真空包装、气体分析、热塑成型等行业，畅销国内并出口欧美、日韩和台湾等多个国家和地区。

公司本着“客户至上”服务理念。产品深受国内外广大客户青睐。我们将继续以“质量第一、用户至上、质优价廉”为宗旨，立志树立精益求精的企业形象。

本公司竭诚为广大客户提供最佳服务，敬请各界客商来电来函联系业务，我们愿与你共同发展、共创辉煌。

Wenling Lituomechanical&electrical Co.,Ltd. Is a professional in vacuum pumps and refrigeration tools research, development, manufacturing, sales as one of the modern enterprises. We have a professional team which has engaged in RND the vacuum pump for more than 10years. Our company is rich in technology resource and advanced inspection testing equipment. With our company proverb"technology lead developing, quality strength viability"and quality principle of"aborative production, excellent quality, continuance improving and assure satisfaction",now formed perfect quality system. Our pumps have been already reached international standard level from external appearance to functional performance. Our goods is mainly applied in many fields, such as refrigeration maintain, printing machine, medical equipment, vacuum packing, gas analyze and thermoplastic molding etc,. The market has been extended to many countries and areas, such as Europe, America, Japan, Korea and Taiwan etc.

Our company proverb is "Customers and market oriented".We sincerely welcome to cooperation with customers form abroad and home. And hope to establish long-term partnership and resplendence!



Product Catalog



“Sincere service Reliable quality”

PROFESSIONAL & CONTROL 专业·控制

公司在生产过程当中严格按照国际质量体系标准执行；生产部门在领料时须进行产前检验，生产过程中每一道工序须进行检验，工序完成后须对产品进行全方位性能检测。

Companies in the production process in strict accordance with international quality system standards, production departments in the picking must carry out prenatal inspection, the production process of each process must be inspected, after the completion of the process must be a full range of product performance testing.

- XZ系列真空泵 XZ series vacuum pump 01
- 新冷媒系列真空泵 New refrigerant series vacuum pump 03
- R32系列真空泵 R32 series vacuum pump 04
- 迷你真空泵 Mini vacuum pump 05
- LWP系列活塞式无油真空泵 LWP series piston type oilless vacuum pump 06
- 配件系列 Accessories series 07
- 高压清洗泵 High pressure cleaning pump 08
- LRC系列冷媒回收机 LRC series refrigerant recovery machine 09
- LRR系列冷媒回收机 LRR series refrigerant recovery machine 10
- LES系列冷媒电子秤 LES series refrigerant scales 11
- LMG系列冷媒表 LMG series manifold gauge 12
- 快速割刀 Fast cutter 13
- 高精扩管器 LTT-808 high precision tube expander 14
- 胀管器系列 Expander series 15
- 工具系列 Tools series 16
- 真空计 Vacuum gauge 18
- 检漏仪 Leak detector 18



Product features 产品特点

整体式缸体结构：更高精密度，更高极限真空

电源插座：可便于与各种电源连接

电源调节开关：请在操作前确认开关设置在正确的位置：110V或220V

Integral block structure: higher precision, higher limit vacuum

Power outlets: Easy connection to a variety of power supplies

Power adjustment switch: Make sure the switch is set in the correct position: 110V or 220V before operation



双频双压真空泵
Dual Voltage Vacuum Pump



常规系列真空泵
Conventional Series Vacuum Pump



XZ SERIES VACUUM PUMP

XZ系列真空泵

单级真空泵技术参数 Single Stage Vacuum Pump Technical Parameters

型号 Model	额定电压 Voltage	抽气速率 Flow Rate	极限压力 Ultimate Vacuum	电机功率 Motor	加油量 Oil Capacity	外形尺寸 Dimensions	重量 Weight	进气口连接螺纹 Inlet Port
XZ-1A/C	220V ~ /50Hz 110V ~ /60Hz	50L/Min 1.8CFM 56L/Min 2.0CFM	2Pa 150micron	180W 1/4HP	200ml	270 × 120 × 225mm	5.2kg	7/16"-20UNF 1/4"SAE
XZ-1.5A/C	220V ~ /50Hz 110V ~ /60Hz	70L/Min 2.5CFM 84L/Min 3.0CFM	2Pa 150micron	180W 1/4HP	200ml	270 × 120 × 225mm	5.4kg	
XZ-2A/C	220V ~ /50Hz 110V ~ /60Hz	100L/Min 3.5CFM 114L/Min 4.0CFM	2Pa 150micron	250W 1/3HP	340ml	275 × 120 × 235mm	6.2kg	
XZ-2.5A/C	220V ~ /50Hz 110V ~ /60Hz	128L/Min 4.5CFM 142L/Min 5.0CFM	2Pa 150micron	250W 1/3HP	340ml	275 × 120 × 235mm	6.5kg	7/16"-20UNF 5/8"-18UNF 1/4&3/8"SAE
XZ-3A/C	220V ~ /50Hz 110V ~ /60Hz	170L/Min 6.0CFM 198L/Min 7.0CFM	2Pa 150micron	370W 1/2HP	450ml	320 × 135 × 250mm	8.6kg	
XZ-4A/C	220V ~ /50Hz 110V ~ /60Hz	226L/Min 8.0CFM 254L/Min 9.0CFM	2Pa 150micron	550W 3/4HP	800ml	370 × 148 × 265mm	12.5kg	
XZ-5A/C	220V ~ /50Hz 110V ~ /60Hz	283L/Min 10CFM 340L/Min 12CFM	2Pa 150micron	750W 1HP	950ml	390 × 148 × 265mm	14.5kg	

双级真空泵技术参数 Dual Stage Vacuum Pump Technical Parameters

型号 Model	额定电压 Voltage	抽气速率 Flow Rate	极限压力 Ultimate Vacuum	电机功率 Motor	加油量 Oil Capacity	外形尺寸 Dimensions	重量 Weight	进气口连接螺纹 Inlet Port
2XZ-0.5A/C	220V ~ /50Hz 110V ~ /60Hz	42L/Min 1.5CFM 50L/Min 1.8CFM	2 × 10 ⁻¹ Pa 15micron	180W 1/4HP	200ml	270 × 120 × 225mm	6kg	7/16"-20UNF 1/4"SAE
2XZ-1A/C	220V ~ /50Hz 110V ~ /60Hz	70L/Min 2.5CFM 84L/Min 3.0CFM	2 × 10 ⁻¹ Pa 15micron	250W 1/3HP	270ml	275 × 120 × 235mm	6.8kg	
2XZ-1.5A/C	220V ~ /50Hz 110V ~ /60Hz	100L/Min 3.5CFM 114L/Min 4.0CFM	2 × 10 ⁻¹ Pa 15micron	250W 1/3HP	270ml	275 × 120 × 235mm	7.2kg	
2XZ-2A/C	220V ~ /50Hz 110V ~ /60Hz	128L/Min 4.5CFM 142L/Min 5.0CFM	2 × 10 ⁻¹ Pa 15micron	370W 1/2HP	360ml	320 × 135 × 250mm	8.8kg	7/16"-20UNF 5/8"-18UNF 1/4&3/8"SAE
2XZ-3A/C	220V ~ /50Hz 110V ~ /60Hz	170L/Min 6.0CFM 198L/Min 7.0CFM	2 × 10 ⁻¹ Pa 15micron	550W 3/4HP	650ml	370 × 148 × 265mm	13.8kg	
2XZ-4A/C	220V ~ /50Hz 110V ~ /60Hz	226L/Min 8.0CFM 254L/Min 9.0CFM	2 × 10 ⁻¹ Pa 15micron	750W 1HP	650ml	370 × 148 × 265mm	14.8kg	
2XZ-5A/C	220V ~ /50Hz 110V ~ /60Hz	283L/Min 10CFM 340L/Min 12CFM	2 × 10 ⁻¹ Pa 15micron	750W 1HP	750ml	390 × 148 × 265mm	15.5kg	

NEW REFRIGERANT SERIES VACUUM PUMP

新冷媒系列真空泵

Product features 产品特点

适用于R410a、R407C、R1234a、R12、R22冷媒
防返流电磁阀：断电后保护系统真空度，不回流
高精度真空表：真空显示更精准

Suitable for R410a, R407C, R1234a, R12, R22 refrigerant
Anti-reflux solenoid valve: protection system vacuum after power failure, no reflux
High precision vacuum gauge; more accurate vacuum display



技术参数 Technical parameters

型号 Model	级数 Pole No	额定电压 Voltage	抽气速率 Flow Rate	极限压力 Ultimate Vacuum	电机功率 Motor	加油量 Oil Capacity	外形尺寸 Dimensions	重量 Weight	进气口连接螺纹 Inlet Port
XZ-1B-SV	单级 Single Stage	220V~/50Hz	42L/Min 1.5CFM	2Pa 150micron	150W 1/5HP	160ml	255 × 105 × 205mm	4.4kg	7/16"-20UNF 5/8"-18UNF 1/4"SAE 3/8"SAE
XZ-1A/C-SV		220V~/50Hz	50L/Min 1.8CFM	2Pa 150micron	180W 1/4HP	200ml	270 × 120 × 225mm	5.4kg	
XZ-1.5A/C-SV		220V~/50Hz	70L/Min 2.5CFM	2Pa 150micron	180W 1/4HP	200ml	270 × 120 × 225mm	5.6kg	
XZ-2A/C-SV		220V~/50Hz	100L/Min 3.5CFM	2Pa 150micron	250W 1/3HP	340ml	275 × 120 × 235mm	6.4kg	
2XZ-2A/C-SV	双级 Dual Stage	220V~/50Hz	128L/Min 4.5CFM	2 × 10 ⁻¹ Pa 15micron	370W 1/2HP	360ml	320 × 135 × 250mm	9kg	
2XZ-4A/C-SV		220V~/50Hz	226L/Min 8.0CFM	2 × 10 ⁻¹ Pa 15micron	750W 1HP	650ml	370 × 148 × 265mm	15kg	

R32 SERIES VACUUM PUMP

R32系列真空泵

Product features 产品特点

适用于R32、1234yf冷媒
封闭式开关,确保无火花
电机采用电子离心开关启动,更可靠

For R32, 1234yf refrigerant
Electronic Switch, ensures no spark.
The motor is activated by electronic centrifugal switch, which is more reliable.



技术参数 Technical parameters

型号 Model	级数 Pole No	额定电压 Voltage	抽气速率 Flow Rate	极限压力 Ultimate Vacuum	电机功率 Motor	加油量 Oil Capacity	外形尺寸 Dimensions	重量 Weight	进气口连接螺纹 Inlet Port
XZ-1A/C-R32	单级 Single Stage	220V~/50Hz 110V~/60Hz	50L/Min 1.8CFM 56L/Min 2.0CFM	2Pa 150micron	180W 1/4HP	200ml	270 × 120 × 225mm	5.2kg	7/16"-20UNF 1/4"SAE
XZ-1.5A/C-R32		220V~/50Hz 110V~/60Hz	70L/Min 2.5CFM 84L/Min 3.0CFM	2Pa 150micron	180W 1/4HP	200ml	270 × 120 × 225mm	5.4kg	
XZ-2A/C-R32		220V~/50Hz 110V~/60Hz	100L/Min 3.5CFM 114L/Min 4.0CFM	2Pa 150micron	250W 1/3HP	340ml	275 × 120 × 235mm	6.2kg	
XZ-3A/C-R32		220V~/50Hz 110V~/60Hz	170L/Min 6.0CFM 198L/Min 7.0CFM	2Pa 150micron	370W 1/2HP	450ml	320 × 135 × 250mm	8.6kg	
2XZ-1A/C-R32	双级 Dual Stage	220V~/50Hz 110V~/60Hz	70L/Min 2.5CFM 84L/Min 3.0CFM	2 × 10 ⁻¹ Pa 15micron	250W 1/3HP	270ml	275 × 120 × 235mm	6.8kg	7/16"-20UNF 1/4"SAE
2XZ-2A/C-R32		220V~/50Hz 110V~/60Hz	170L/Min 6.0CFM 198L/Min 7.0CFM	2 × 10 ⁻¹ Pa 15micron	550W 3/4HP	650ml	370 × 148 × 265mm	13.8kg	7/16"-20UNF 5/8"-18UNF 1/4&3/8"SAE

MINI VACUUM PUMP

迷你真空泵

Product features 产品特点

高效电机：效率高，重量轻

High Efficiency Motor: High Efficiency, Light Weight



技术参数 Technical Parameters

型号 Model	额定电压 Voltage	抽气速率 Flow Rate	极限压力 Ultimate Vacuum	电机功率 Motor	加油量 Oil Capacity	外形尺寸 Dimensions	重量 Weight	进气口连接螺纹 Inlet Port
XZ-0.5B	220V~ /50Hz 110V~ /60Hz	34L/Min 1.2CFM 42L/Min 1.5CFM	3Pa 225micron	150W 1/5HP	160ml	255 × 105 × 205mm	4kg	7/16"-20UNF 1/4"SAE
XZ-1B	220V~ /50Hz 110V~ /60Hz	42L/Min 1.5CFM 50L/Min 1.8CFM	3Pa 225micron	150W 1/5HP	160ml	255 × 105 × 205mm	4.2kg	

LWP SERIES PISTON TYPE OILLESS VACUUM PUMP

LWP系列活塞式无油真空泵



技术参数 Technical Parameters

型号 Model	LWP-550	
额定电压 / Voltage	220V~ /50Hz	110V~ /60Hz
抽气速率 / Flow Rate	5L/Min@ -80Kpa 80L/Min@ 0Kpa	7L/Min@ -8Kpa 90L/Min@ 0Kpa
最大压力 / Max pressure	98Kpa	
电机功率 / Motor	560W 3/4HP	
转速 / Speed	1410rpm/min	
热保护器 / Oil Capacity	135 ± 5℃	
外形尺寸 / Dimensions	271 × 128 × 190mm	
重量 / Weight	9kg	
进气口连接螺纹 / Inlet Port	G1/4"	



技术参数 Technical Parameters

型号 Model	LWP-750	
额定电压 / Voltage	220V~ /50Hz	110V~ /60Hz
抽气速率 / Flow Rate	8L/Min@ -80Kpa 100L/Min@ 0Kpa	10L/Min@ -8Kpa 120L/Min@ 0Kpa
最大压力 / Max pressure	98Kpa	
电机功率 / Motor	750W 1HP	
转速 / Speed	1410rpm/min	
热保护器 / Oil Capacity	135 ± 5℃	
外形尺寸 / Dimensions	271 × 128 × 190mm	
重量 / Weight	10kg	
进气口连接螺纹 / Inlet Port	G1/4"	



技术参数 Technical Parameters

型号 Model	LWP-1200	
额定电压 / Voltage	220V~ /50Hz	110V~ /60Hz
抽气速率 / Flow Rate	30L/Min@ -80Kpa 200L/Min@ 0Kpa	40L/Min@ -8Kpa 220L/Min@ 0Kpa
最大压力 / Max pressure	98Kpa	
电机功率 / Motor	1200W 1.5HP	
转速 / Speed	1410rpm/min	
热保护器 / Oil Capacity	135 ± 5℃	
外形尺寸 / Dimensions	305 × 156 × 288mm	
重量 / Weight	17kg	
进气口连接螺纹 / Inlet Port	G1/4"	



技术参数 Technical Parameters

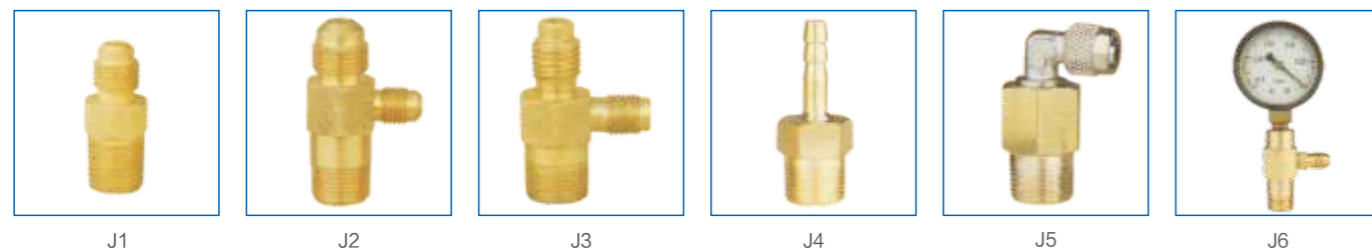
型号 Model	LWP-1500	
额定电压 / Voltage	220V~ /50Hz	110V~ /60Hz
抽气速率 / Flow Rate	50L/Min@ -80Kpa 80L/Min@ 0Kpa	60L/Min@ -8Kpa 320L/Min@ 0Kpa
最大压力 / Max pressure	98Kpa	
电机功率 / Motor	1500W 2HP	
转速 / Speed	1410rpm/min	
热保护器 / Oil Capacity	135 ± 5℃	
外形尺寸 / Dimensions	305 × 156 × 288mm	
重量 / Weight	19kg	
进气口连接螺纹 / Inlet Port	G1/4"	



项 Item	描述 Description	项 Item	描述 Description
LP01	国内二插 China plug	LP06	美式插头 America plug
LP02	国内三插 China plug	LP07	日本插头 Japan plug
LP03	欧式插头 Europe plug	LP08	英式插头 Britain plug
LP04	南非插头 South Africa plug	LP09	意大利插头 Italy plug
LP05	澳大利亚插头 Australia plug	LP10	阿根廷插头 Argentina plug



型号 Model	LPO-46
粘度 Viscosity	41.4 ~ 50.6mm ² /s
粘度指数 Viscosity Index	101
闪点 Flash Point	240°C
倾点 Pour Point	-10°C
类型 Type	矿物油 Mineral Oil



项 Item	描述 Description	项 Item	描述 Description
J1	1/4"SAE	J4	1/4"Tube
J2	1/4&3/8"SAE	J5	1/4"Tube(Locked With M12 × 1Nut)
J3	1/4"SAE 1/2"Acme	J6	1/4"SAE Vacuum Gauge

HIGH PRESSURE CLEANING PUMP

高压清洗泵

使用案例 Use case



建筑工地
Construction sites



空调外机清洗
Air conditioning external cleaning



餐厅清洁
Restaurant cleaning



园林树木
Garden trees



技术参数 Technical parameters

型号 Model	LTQ-3.5
额定电压 / Voltage	220V ~ /50Hz
吸水量 / Pumpage	3.5L/Min
常用压力 / Working pressure	3.9Mpa
电机功率 / Motor	550W
冷却方式 / Cooling	风冷 Air Cooled

Product features 产品特点

清洗汽车发动机、空调机、印刷机、农业机械、建筑工地用具等；
清洁食品工厂设备，餐厅清洗，园林树木等之消毒；
各种管道配管、阀门、容器等耐压测试，各种破坏性测试和制造水压用。

Cleaning the car engine, air conditioning machine, printing machine, agricultural machinery and equipment, construction tools, etc.
Clean food factory equipment, cleaning the restaurant, Disinfection of garden trees;
Pressure testing of various pipelines, valves, containers, All kinds of destructive test and pressure.

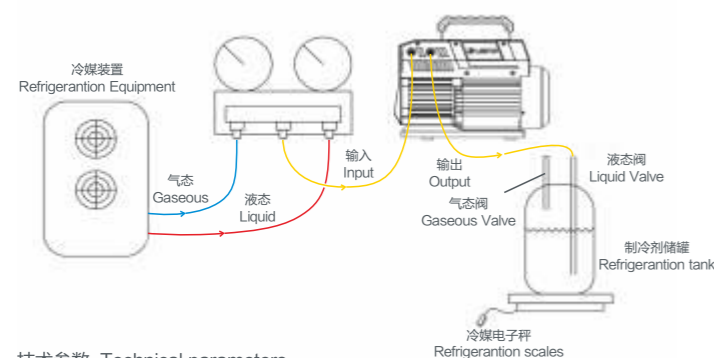
LRC SERIES REFRIGERANT RECOVERY MACHINE

LRC系列冷媒回收机

Product features 产品特点

- 便携 / Portable
- 轻量化 / Light Weight
- 小体积 / minute Extension
- 高可靠 / Most Reliable
- 无火花运行 / No-spark Operation

冷媒回收机使用方法 Refrigerant Recovery Machine Usage



技术参数 Technical parameters

型号 Model	LRC-24A-11	LRC-24A-22
电源Power	220V~/50Hz	110V~/60Hz
电机Motor	3/4HP AC	3/4HP AC
转速Speed	1450rpm	1750rpm
压缩机Compressor	无油润滑、风冷、活塞式 Oil-Less、Air-Cooled、Piston Style	
高压保护High Pressure Shut-off	38.5bar/559psi	
操作温度Operating Temperature	0°C ~ 40°C (32° F to 104° F)	
尺寸Size	320mm × 140mm × 250mm	
净重Net Weight	10.8Kg	

回收速率 Recovery Rate

型号 Model	气态Vapor		液态Liquid		推拉Push-pull Liquid	
	50Hz	60Hz	50Hz	60Hz	50Hz	60Hz
R22	0.23kg/min(0.50lb/min)	0.27kg/min(0.59lb/min)	3.42kg/min(7.53lb/min)	4.02kg/min(8.86lb/min)	12.16kg/min(26.79lb/min)	14.3kg/min(31.52lb/min)
R134a	0.19kg/min(0.42lb/min)	0.22kg/min(0.49lb/min)	4.60kg/min(10.15lb/min)	5.41kg/min(11.94lb/min)	12.24kg/min(26.95lb/min)	14.4kg/min(31.70lb/min)
R410A	0.27kg/min(0.60lb/min)	0.32kg/min(0.70lb/min)	3.01kg/min(6.63lb/min)	3.54kg/min(7.80lb/min)	9.89kg/min(21.81lb/min)	11.64kg/min(25.66lb/min)
R407C	0.20kg/min(0.45lb/min)	0.24kg/min(0.53lb/min)	3.66kg/min(8.08lb/min)	4.31kg/min(9.50lb/min)	11.24kg/min(24.77lb/min)	13.22kg/min(29.14lb/min)



LRR SERIES REFRIGERANT RECOVERY MACHINE

LRR系列冷媒回收机

Product features 产品特点

- ◆ 拉杆式设计携带方便 / Pull rod design, convenient for taking out
- ◆ 自动清除残留制冷剂设计 / Automatic residue removal refrigerant design
- ◆ 高可靠 / Most Reliable

技术参数 Technical parameters

型号 Model	LRR12A		LRR24A				
适用制冷剂Refrigerants	III类 (Category III) : R-12、R-134a、R-401C、R-500 IV类 (Category IV) : R-22、R-401A、R-401B、R-402B、R-407C、R-407D、R-408A、R-409A、R-411A、R-411B、R-412A、R-502、R-509 V类 (Category V) : R-402A、R-404A、R-407A、R-408B、R-410A、R-507						
电源Power	220V~/50Hz	110V~/60Hz	220V~/50Hz	110V~/60Hz			
电机Motor	3/4HP AC	3/4HP AC	1HP AC	1HP AC			
转速Speed	1450rpm	1750rpm	1450rpm	1750rpm			
压缩机Compressor	无油润滑、风冷、活塞式 Oil-Less、Air-Cooled、Piston Style						
高压保护High Pressure Shut-off	38.5bar/559psi						
操作温度Operating Temperature	0°C ~ 40°C (32° F to 104° F)						
回收速率 Recovery Rate	III类(Category III)	IV类(Category IV)	V类(Category V)	III类(Category III)	IV类(Category IV)	V类(Category V)	
	气态 Vapor	0.2	0.25	0.25	0.4	0.5	0.5
	液态 Liquid	1.6	1.8	2.2	3	3.5	3.5
推拉 Push/pull	4.6	5.6	6.3	7.5	8.5	9.5	
尺寸Size	465mm × 225mm × 360mm						
净重Net Weight	15.5Kg			16.8Kg			



LES SERIES REFRIGERANT SCALES

LES系列冷媒电子秤

Product features 产品特点

- 大底座设计防侧翻
- 底座橡胶防护防碰撞
- 高精度传感器精准测量
- LCD背光显示更清晰
- 秤盘提手式设计方便携带
- 秤盘上含水平珠便于放置水平
- 精准编制冷媒加注回收量报警
- Large base design to prevent backturning
- Base rubber protection against collision
- Precision measurement of high precision sensors
- LCD backlight display is clearer
- Scale handlebar design is easy to carry
- Horizontal beads on scale are easy to place horizontally
- Scale handlebar design is easy to carry



技术参数 Technical parameters

型号 Model	LES-50A	LES-100A	LES-50Ai	LES-100Ai
最大量程 Max Capacity	50Kg (110Lb)	100Kg (220Lb)	50Kg (110Lb)	100Kg (220Lb)
分辨率 Resolution	2g	5g	2g	5g
精度 Accuracy	±0.05%			
连接方式 Connection Mode	有线连接 Cable connection		无线连接 Wireless connection	
电源 Power	4 × AAA电池Batteries		秤盘Scale: 4 × AA电池Batteries 遥控器Handheld: 4 × AAA电池Batteries	
使用温度Operating Temperature	-10℃ ~ 40℃			
秤台尺寸Size	308 × 220mm			

LMG SERIES MANIFOLD GAUGE

LMG系列冷媒表

双表阀 / Manifold Gauge

技术参数 Technical parameters

型号 Model	LMG-2-R22	LMG-2-R410A	LMG-2-R134A
适用冷媒 Refrigerants	R22、R134a、R404A、R407C	R410A、R407C、R134a、R22	R134a
表盘尺寸 Gauge Diameter	Φ68mm		
压力范围 Pressure Scale	-30 ~ 400psi -30 ~ 140psi	0 ~ 800psi -30 ~ 500psi	-30 ~ 400psi -30 ~ 140psi
冷媒管配置 Hose	红&蓝&黄 Red&Blue&Yellow: 1/4"-1/4"	红&蓝: 1/4"-5/16" 黄: 1/4"-1/4" Red&Blue: 1/4"-5/16" Yellow: 1/4"-1/4"	红&蓝&黄 Red&Blue&Yellow: 1/4"-1/4"
冷媒管长度 Standard Length	3 × 120CM		
包装方式 Package	吹塑/吸塑 Blow case/Blister packing		



双表阀 / Manifold Gauge

技术参数 Technical parameters

型号 Model	LMG-1-S-H	LMG-1-S-L
表盘尺寸 Gauge Diameter	Φ68mm	Φ68mm
压力范围 Pressure Scale	-30 ~ 800psi	-30 ~ 500psi
包装方式 Package	吸塑 Blister packing	吸塑 Blister packing



冷媒管 / Refrigerant Hose

技术参数 Technical parameters

型号 Model	LRP-U-R		LRP-U-Y		LRP-U-B	
适用冷媒 Refrigerants	R410A	R22 R134a	R410A	R22 R134a	R410A	R22 R134a
工作压力 Working Pressure	0 ~ 800psi	0 ~ 500psi	0 ~ 800psi	0 ~ 500psi	0 ~ 800psi	0 ~ 500psi
爆破压力 Burst Pressure	4000psi	2500psi	4000psi	2500psi	4000psi	2500psi
接头螺纹 Connection Thread	1/4"-5/16	1/4"-1/4"	1/4"-1/4"	1/4"-1/4"	1/4"-5/16	1/4"-1/4"
长度 Standard Length	120CM					
包装方式 Package	吸塑 Blister packing					



快速接头 Quick Connection



LQC-A-H



LQC-A-L



LQC-H



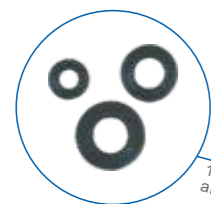
LQC-L

FAST CUTTER

快速割刀

快速切割 锋利耐用

FAST CUTTING, SHARP AND DURABLE



19道工序磨削刀片，锋利耐用
19 step grinding blade, sharp and durable

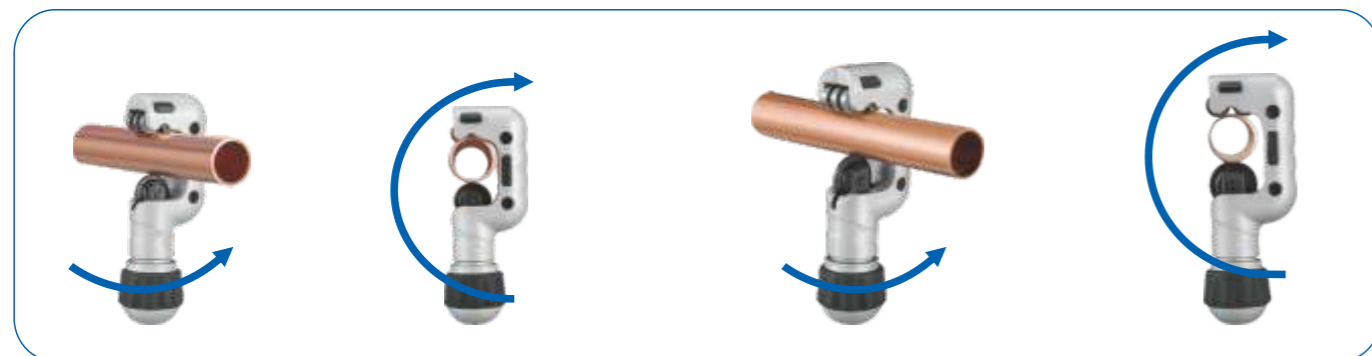


8只滚珠轴承轻松切割
8 ball bearings easily cutting



简易操作示意图

Schematic Diagram Of Simple Operation

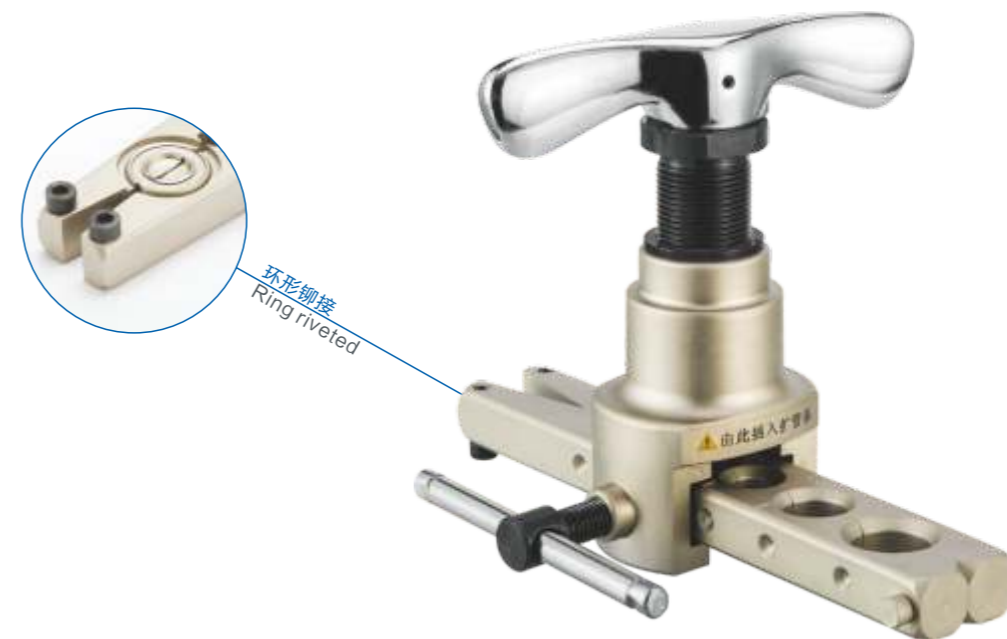


技术参数 Technical parameters

割刀型号 Cutter Model	LT-19	LT-28	LT-32	LT-50
适用管径 Available Pipe Diameter	3~19mm 1/8"~3/4"	4~28mm 1/8"~1-1/8"	5~32mm 3/16"~1-1/4"	6~50mm 1/4"~2"
包装方式 Package	吸塑 Blister packing	吸塑 Blister packing	吸塑 Blister packing	吸塑 Blister packing

LTT-808 HIGH PRECISION TUBE EXPANDER

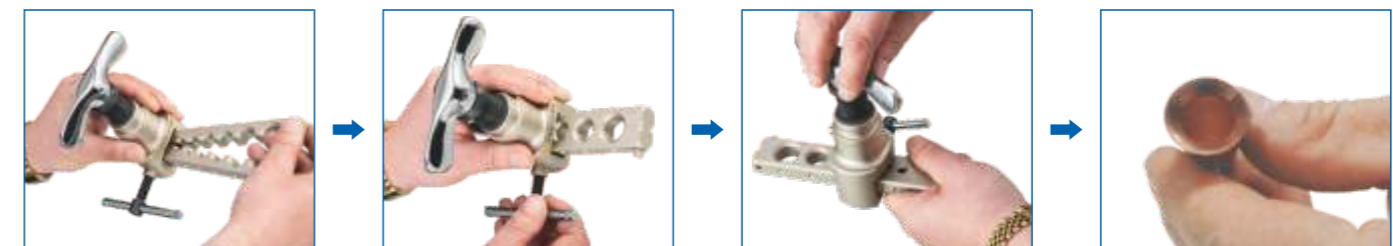
高精扩管器



环形铆接
Ring riveted

环形铆接 精准扩管

CIRCULAR RIVETING, ACCURATE EXPANSION TUBE



技术参数 Technical parameters

割刀型号Cutter Model	LT-28
扩管管径 Flaring diameter	6,8,10,12,16,19mm 1/4",5/16",3/8",5/8",3/4"
包装方式 Package	吹塑 Blow case

LHE SERIES HYDRAULIC EXPANDER

LHE系列液压胀管器



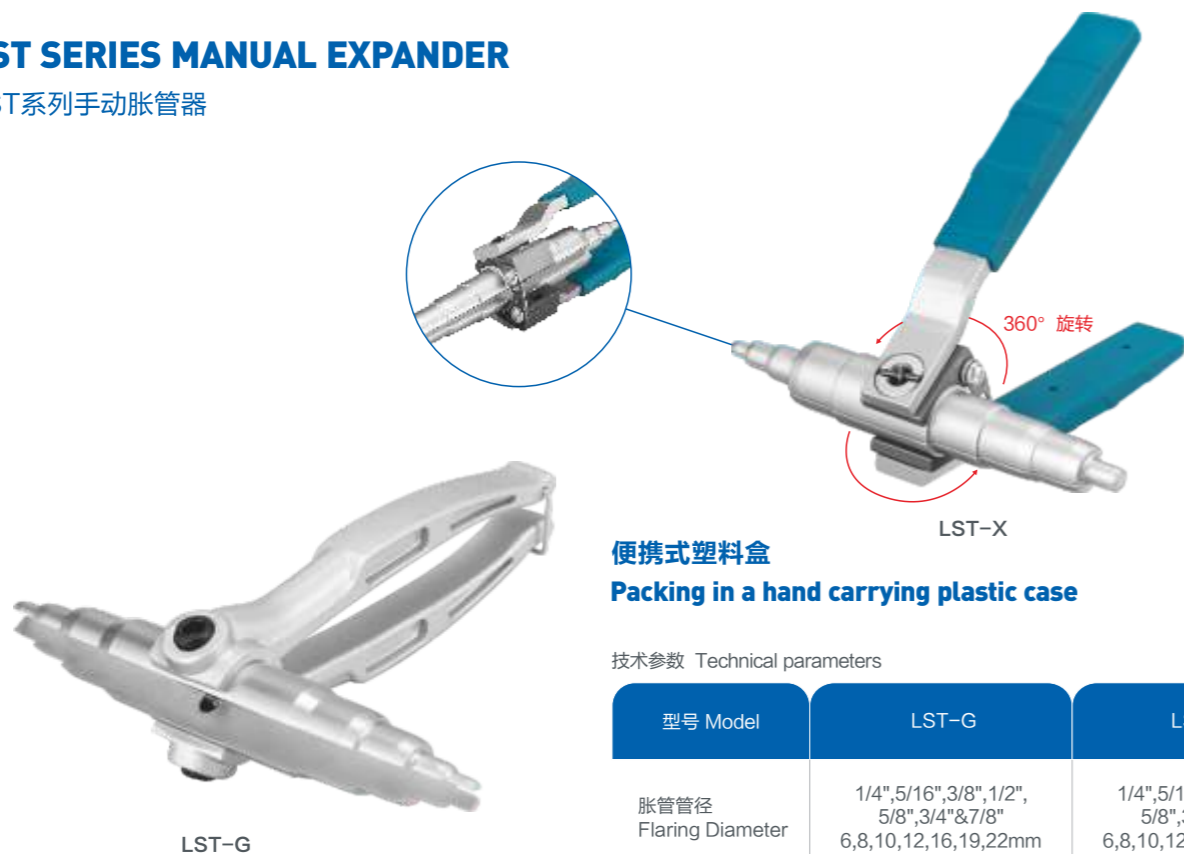
便携式塑料盒 Packing in a hand carrying plastic case

技术参数 Technical parameters

型号 Model	LHE-300L
胀管管径 Flaring Diameter	3/8", 1/2", 5/8", 3/4", 7/8", 1", 1-1/8", 1-1/4", 1-3/8", 1-1/2", 1-5/8", 10, 12, 16, 19, 22, 25, 28, 32, 35, 38 & 42mm
附件 Enclosure	LRT-101/LRT-401/LT-50

LST SERIES MANUAL EXPANDER

LST系列手动胀管器



便携式塑料盒 Packing in a hand carrying plastic case

技术参数 Technical parameters

型号 Model	LST-G	LST-X
胀管管径 Flaring Diameter	1/4", 5/16", 3/8", 1/2", 5/8", 3/4" & 7/8" 6, 8, 10, 12, 16, 19, 22mm	1/4", 5/16", 3/8", 1/2", 5/8", 3/4" & 7/8" 6, 8, 10, 12, 16, 19, 22mm
附件 Enclosure	LRT-401/LT-28	LRT-401/LT-28



COMBINED PIPE BENDER

组合弯管器 LBT-101

技术参数 Technical parameters

型号 Model	LBT-101
规格 Specifications	1/4", 5/16", 3/8", 1/2", 5/8", 3/4" & 7/8" 6, 8, 10, 12, 16, 19, 22mm

PIPE BENDER

弯管器 LBT-201

技术参数 Technical parameters

型号 Model	LBT-201-04	LBT-201-05	LBT-201-06	LBT-201-08
规格 Specifications	1/4" 6mm	5/16" 8mm	3/8" 10mm	1/2" 12mm
弯曲半径 Bend radius	14.2mm	17.5mm	24mm	38mm

PIPE BENDER

弯管器 LBT-202

技术参数 Technical parameters

型号 Model	LBT-202-10	LBT-202-12	LBT-202-14
规格 Specifications	5/8" 16mm	3/4" 8mm	7/8" 22mm
弯曲半径 Bend radius	57.1mm	76.2mm	76.2mm

PIPE BENDER

弯管器 LBT-202N

技术参数 Technical parameters

型号 Model	LBT-202N-08	LBT-202N-10	LBT-202N-12	LBT-202N-14
规格 Specifications	1/2" 12mm	5/8" 16mm	3/4" 19mm	7/8" 22mm
弯曲半径 Bend radius	38mm	57.1mm	76.2mm	84.2mm

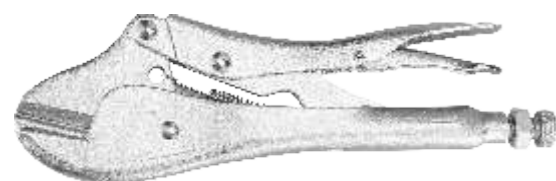


锋利便携 Sharp And Portable

DEBURRER

刮刀 LRT-101

刀片锋利，加工表面光滑度高操作简单，便于携带
Sharp blade, high surface smoothness Easy to operate and carry



轻松封口 Easy Sealing

PINCH OFF PLIER

封口钳 LRT-201

钝化钳口：夹紧有力，能够快速地封闭铜管
力度调节螺母：轻松调整至最佳夹持尺寸
Passivation clamp: Powerful clamp, able to quickly seal copper pipe
Force Adjusting Nut: Easily Adjust to Optimum Holding Size

技术参数 Technical parameters

型号 Model	LRT-201
规格 Specifications	1/8"-3/8" 3-10mm

RATCHET WRENCH

棘轮扳手 LRT-301

技术参数 Technical parameters

型号 Model	LRT-301	LRT-301L	LRT-302	LRT-302L
规格 Specifications	3/16", 1/4", 5/16", 3/8"		3/16", 1/4", 1/2", 9/16"	

DEBURRING APPARATUS

去毛刺器 LRT-401

技术参数 Technical parameters

型号 Model	LRT-401
规格 Specifications	3/16"-1-5/8" 4-42mm

VACUUM GAUGE

真空计 LMV-1

LMV-1是一种无线数字真空装置，用于在填充制冷剂时获得准确的真空测量。它具有专业的真空传感器来精确测试真空。用于检测系统泄漏和真空泵质量。

The LMV-1 is a wireless digital vacuum gauge for obtaining accurate vacuum measurements during filling refrigerants. It features professional vacuum sensor to precisely test vacuum. It is used to test system leak and discern vacuum pump quality.

Product features 产品特点

记录数据并生成报告	Record data and generate report
图表中的数据	Data analysis in graphs
可设定的高压/低压警报	Settable high/low pressure alarms
保护等级IP65	Protection grade IP65

技术参数 Technical parameters

型号 Model	LMV-1
测量范围 Measuring range	0-19000micron
分辨率 Resolution	0-400 1micron, 400-3000 10Micron, 3000-10000 100Micron, 10000-19000 250Micron
准确度 Accuracy	10%
单位 Units	inHg,Torr,psi,mbar,mTorr,Pa,micron,kPa
离线记录 Offline records	9943读数/readings
电源 Power supply	3 AA 电池/batteries
使用时间 Time in use	180h
最大超限 Max.overpressure	27.5bar
工作温度 Operating temperature	-17.8°C ~ -60°C(0°F ~ 140°F)
尺寸 Fitting	1/4" Male Flare
产品尺寸 Product size	127*74*37mm
无线传输距离 Wireless transmission distance	30m



LEAK DETECTOR

检漏仪 LML-1

Product features 产品特点

轻型尼克斯管显示器	Light nixie tube display
符合人体工程学的设计，操作更周到	Ergonomic design, more comfortable in operation
灵活的不锈钢探测棒可以探测到难以到达的地方	Flexible stainless steel probing rod can detect hard-to-reach places
对所有卤素制冷剂（包括氯和氟）作出反应	Responds to all halogen refrigerants (including Chlorine and Fluorine)
随着泵的启动，响应时间和报警时间缩短	With getter pump, response time and alarm clear time is reduced
可更换探针	Replaceable probe

技术参数 Technical parameters

型号 Model	LML-1
灵敏度范围 Sensitivity range	6m
最大泄漏检测 Max.leak detection	3克/年(g/year)
响应时间 Response time	< 3秒(s)
预热时间 Warm-up time	< 10秒(s)
电源 Power supply	3 AA 电池/batteries

