



FU-16

Fiber Unit Thrubeam type

Specifications

Model	FU-16*1	
Optical axis diameter (Standard target to be detected)	ø2.5 mm0.098"	
Beam emitting direction	Side	
Aperture angle	Approx 6°	
Fibre unit length	2 m78.74" free-cut	
Fibre unit diameter	ø1.0	
Minimum bend radius	R10 mm0.394"	
Minimum detectable object	Object with a diameter of 0.1 mm0.004"*2	
Environmental resistance	Ambient temperature	-40 to +70 °C -40 to 158 °F
Weight	Approx. 8 g	

*1 For details on the detecting distance, see the fiber amplifier catalog.

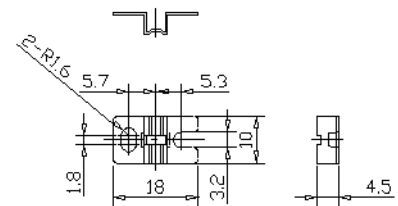
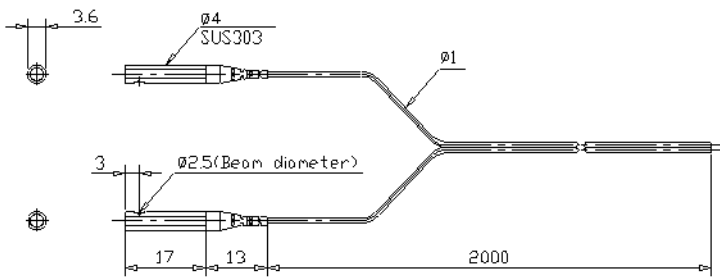
*2 The minimum detectable object is the value when the detecting distance and sensitivity have been set to their optimal state.

Dimensions

* Download CAD file or product manual for larger image/text and more detail.

FU-16

Mounting bracket



t=0.5.SUS304