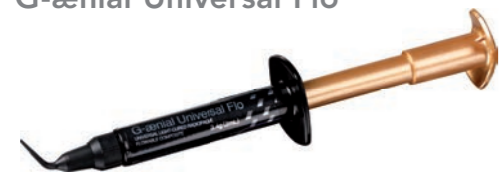


Flowables that go further where others stop

G-ænial Universal Flo



Splinting



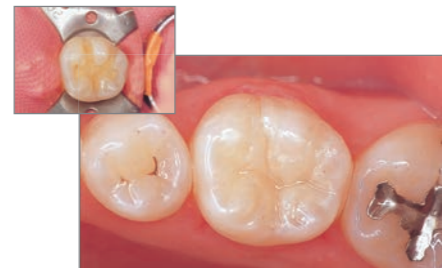
Minimum Intervention cavity



Direct restorations Class I, II, III, IV, V



Dr. J. Tapia Guadix, Spain



Prof. M. Miyazaki, Japan

G-ænial Flo



Liner

Restoration small defects

Fissure sealant

Block undercuts

Tunnel restoration



Dr. J. Sabbagh, Belgium

Discover the **G-ænial** Flowable range



G-ænial Universal Flo

1 x 3.4 g (2mL), 10 dispensing tips, 1 light protective cover
Available in 15 shades: A1, A2, A3, A3.5, A4, B1, B2, B3, C3, AO2, AO3, BW, CV, JE, AE

G-ænial Flo

1 x 3.8 g (2mL), 10 dispensing tips, 1 light protective cover
Available in 8 shades: A1, A2, A3, A3.5, A4, AO2, AO3, CV

GC EUROPE N.V.
Head Office
Researchpark Haasrode-Leuven 1240
Interleuvenlaan 33
B-3001 Leuven
Tel. +32.16.74.10.00
Fax. +32.16.40.48.32
info@gceurope.com
http://www.gceurope.com

GC UNITED KINGDOM Ltd.
12-15, Coopers Court
Newport Pagnell
UK-Bucks. MK16 8JS
Tel. +44.1908.218.999
Fax. +44.1908.218.900
info@uk.gceurope.com
http://uk.gceurope.com



Create æ-motion
with flowables from **GC.**
G-ænial Flo & Universal Flo



Handles like a flowable – Performs like a restorative.



ZOLFEN 6/7 04/12

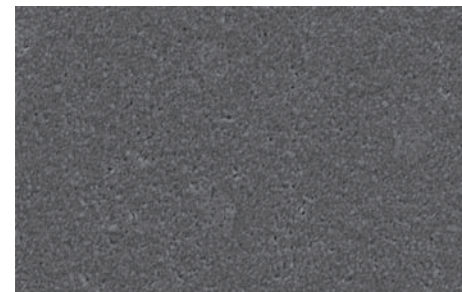
G-ænial Flowables

the Next generation

Looking for a flowable composite with extra indications where optimal handling, long lasting restorations and ideal aesthetics are key requirements? G-ænial Flo and Universal Flo is your answer.

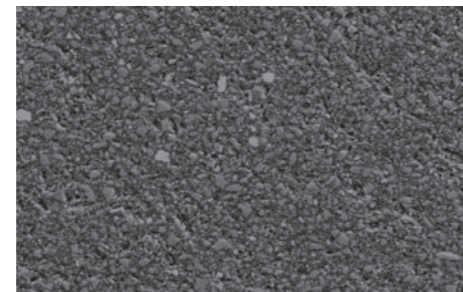
Since their first introduction in 1995, the use of flowable composites has risen rapidly. Users immediately appreciated the advantages of their easy dispensing and smooth placement, characteristics mainly derived from the reduced amount of filler found in these restoratives.

Unfortunately it soon became apparent that the reduced amount of fillers also resulted in a reduction in the physical and mechanical properties of the material, limiting the number of indications for which it could be used.



G-ænial Universal Flo

GC has looked for a solution and created G-ænial Flo and G-ænial Universal Flo; two materials with a unique filler technology. Unlike other flowable composites they have a higher filler load and a homogeneous dispersion of fillers.



G-ænial Flo

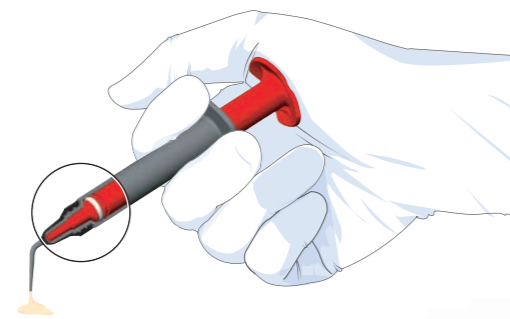
GC R&D Internal Data

The physical properties match those of regular composite materials, opening up the potential for a broader use than standard flowables.

Economical & ergonomic dispensing

Both products are brought to you in a specially designed syringe that offers

- An ergonomic solution: the product is dispensed smoothly while the syringe size is large enough to provide a comfortable grip.
- An easy application: the nozzle surface is textured so that the paste does not stick to it.
- An economical advantage: the residual paste in the syringe is minimal: less than 0.04 mL.



G-ænial Universal Flo

Fluidity – high strength and gloss

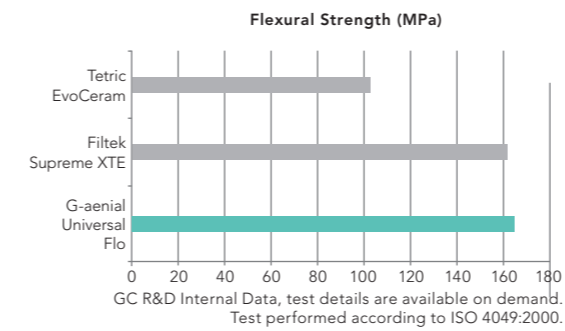
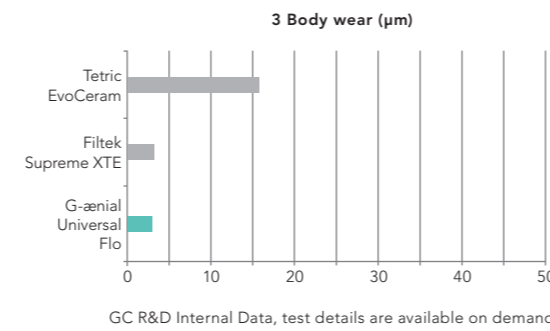
G-ænial Universal Flo offers the exclusive combination of a flowing viscosity, for easy and convenient placement, combined with outstanding physical properties for safe and durable restorations. G-ænial Universal Flo can be used:

- As a direct restorative material for all Class I, II, III, IV and V cavities
- For Minimum Intervention cavities
- For splinting (fixation of mobile teeth)

G-ænial Universal Flo offers a number of intelligent and convenient solutions that take it further than the standard flowables on the market:

Longevity and endurance

One of the major concerns for a dentist when using a flowable material is the longevity and the performance of the material. G-ænial Universal Flo demonstrates the physical performance of a regular composite material but in a flowable consistency. This is possible thanks to the design, amount and dispersion of the fillers.



Fluidity and placement

The viscosity of G-ænial Universal Flo is very carefully balanced in order to provide a material that flows smoothly for easy placement in the cavity. And at the same time the material is also highly thixotropic, not runny and stays neatly in place and holds its shape.



G-ænial Universal Flo

Polishability

G-ænial Universal Flo benefits from a very high gloss rate and gloss retention rate. The speed and ease with which a gloss is obtained is extremely impressive. In actual fact, G-ænial Universal Flo can almost be considered to be a self polishing material.



Gloss rate of unpolished composite. Left sample is G-ænial Universal Flo

On top of all this, G-ænial Universal Flo offers superb invisible aesthetics without any compromises. Thanks to its broad range of 15 shades and 3 different levels of translucencies, it is possible to achieve aesthetic restorations in an easy and smooth manner.

G-ænial Flo



Fluidity – perfect adaptation and high radiopacity

G-ænial Flo is an easy to use, radiopaque flowable composite with all the necessary features to give optimal clinical results:

- As a liner or block undercuts
- In a tunnel preparation
- For restoration of small defects
- As a fissure sealant

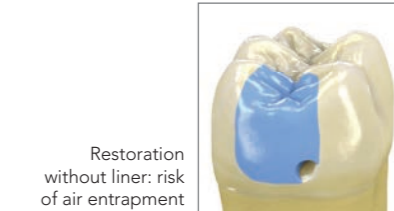
G-ænial Flo offers an intelligent and convenient solution to the problems of traditional flowables:

Wettability and fluidity

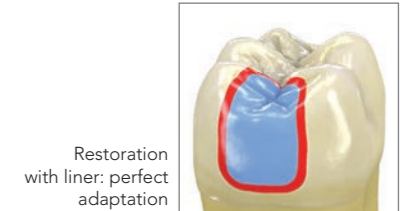
A concern for any dentist when applying the first layer of a composite, is the wettability of the material and the adaptation to the cavity walls. G-ænial Flo allows for an easy and fluid placement. The material benefits from high wettability, allowing perfect adaptation to the cavity walls, avoiding air entrapment.



G-ænial Flo



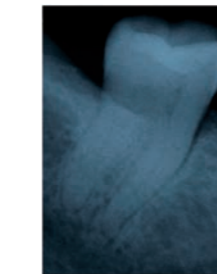
Restoration without liner: risk of air entrapment



Restoration with liner: perfect adaptation

Radiopacity

The radiopacity of G-ænial Flo is about 230% Al, which is higher than enamel, so the material is easily differentiated from the tooth structure allowing easy x-ray follow-up.



Dr. J. Tapia Guadix, Spain

Reliability

Well balanced physical properties that are perfectly adapted to the product's indications.

G-ænial Flo completes the range offering 8 shades including 2 opaque shades. G-ænial Flo is an ideal partner for G-ænial Anterior & Posterior.

