

**Series
USERiN**
High value added cooling tower

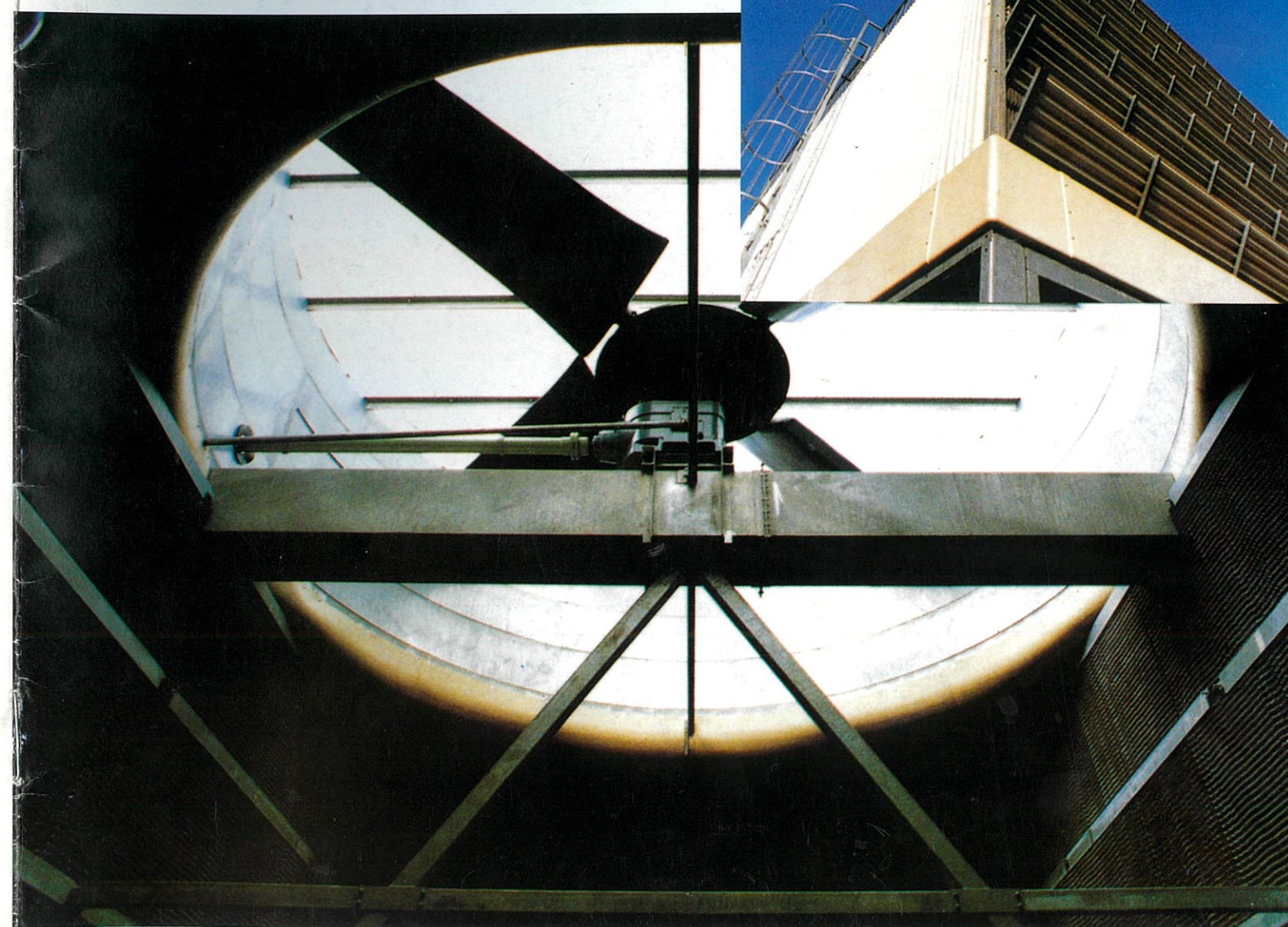
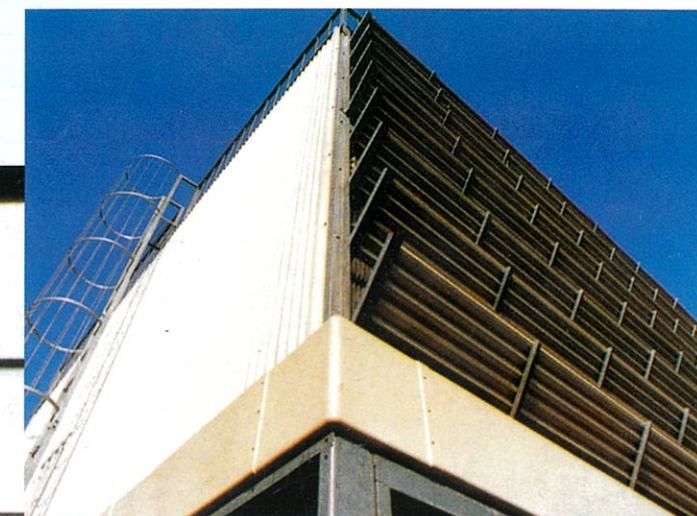
SHINWA HIGH CAPACITY COOLING TOWER

SLC model

Cross Flow Type

SCC model

Counter Flow Type



●Your contact



EBARA SHINWA LTD.

Head office : Kyodo Bldg.2-2, Hatchobori, 4-chome,Chuo-ku,

Tokyo, 104-0032 Japan

Phone : 03-3555-0318

Cable : SHINWA TOWER TOKYO

Telex : 252-3626 SHINWA J

Fax : 03-3552-1513

Factory : Fujisawa, Kawasaki

SHINWA
COOLING TOWER

Shinwa supports technology which is in harmonized with environment



Shinwa has been with cooling towers for 35 years. Since we have excellence technology and experience in manufacturing a very big million refrigerate tons of cooling tower, we can response to any needs and we have also serialized large capacity cooling towers by many characteristics.

Shinwa large capacity cooling tower has been designed base on the following three concepts.

- ① Minimized equipment spaces in order to effectively use of valuable spaces.
- ② Comfortable living space by prior investigating the affect to environments.
- ③ Simplified operation and maintenance by thinking on user stand point.

SHINWA HIGH CAPACITY COOLING TOWER

SLC model

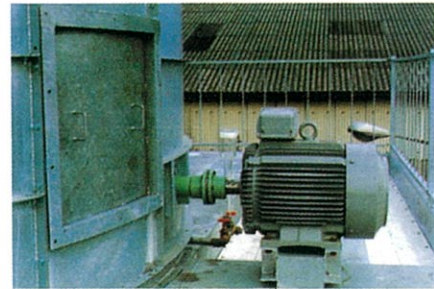
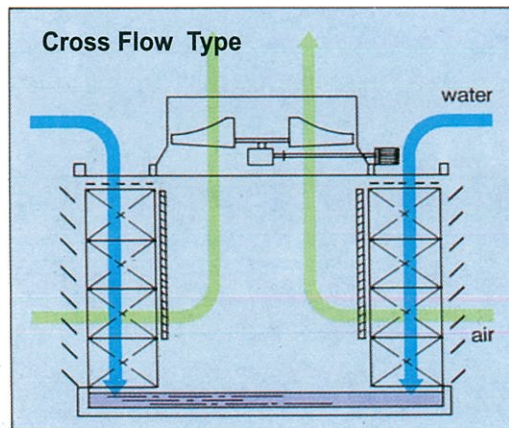
We help in creating amenity environment both for district air and heat center and industrial factory

Distinctive features

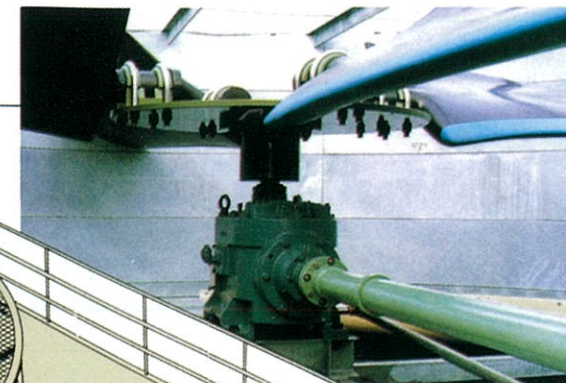
1. By using newly developed fill material, which is a life of a cooling tower, in this model process water volume increase dramatically and equipment space is also reducing.
2. Succeed in new design make the equipment lighter, resin is used in some parts including anti rust treatment making the life last longer.
3. When equip with a dry resin heat exchanger in the tower enable it to act as an auto smoke preventing tower.
4. It is ease to be used as a district air and heat center or industrial factory cooling tower.

Cross flow type

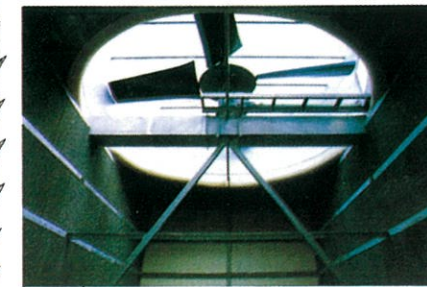
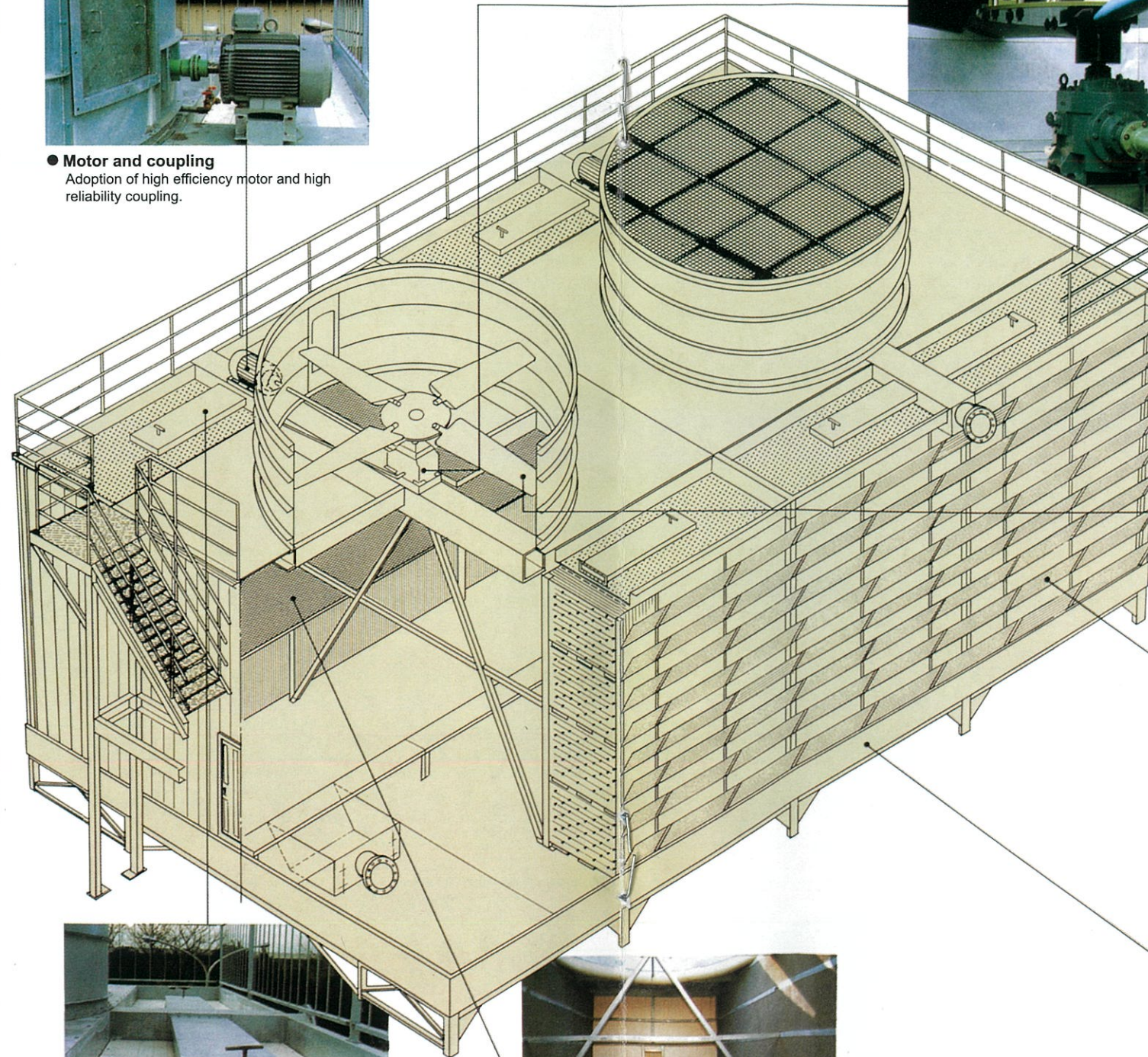
Warm water that flows back to cooling tower will naturally flows from upper warm water tank to the fill material parts by sprinkle. This warm water will contact at right angle with the air which is suck in by a fan through louver. Part of the water will evaporate and loss its latent heat. The water which is cool down in this way will again be supplied to each equipment from the lower part of cooling tower. Warm air will flow up and out to the atmosphere by the fan.



● **Motor and coupling**
Adoption of high efficiency motor and high reliability coupling.



● **Gear reducer**
Adoption of low noise, high quality and long life gear.



● **Big radius fan**
Made from FRP material. The fan is light, water resist and high efficiency.



● **Louver** Not only preventing water but also beautiful appearance.



● **Upper water tank and sprinkle equipment**
Double use of structure materials for upper water tank and sprinkle equipment makes the tower lighter with high efficiency.



● **Eliminator**
Preventing water splash made from PVC.



● **Lower water tank** Made from FRP material excellent durability.

SHINWA HIGH CAPACITY COOLING TOWER

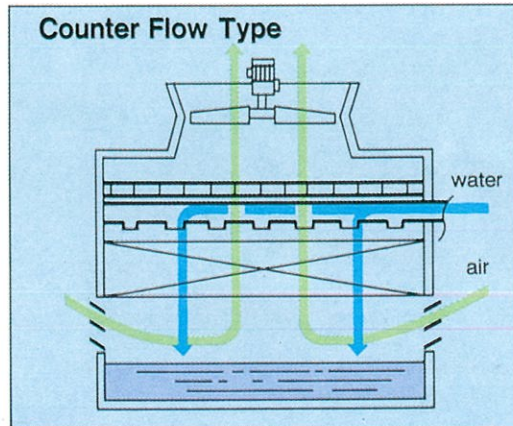
SCC model

Distinctive features

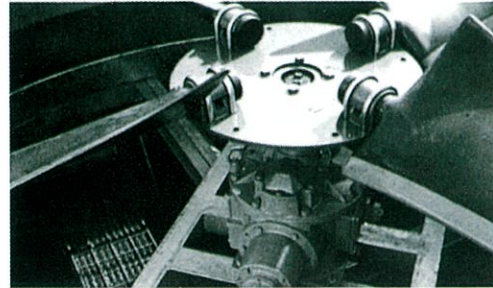
1. Space saving : unlike conventional Cross-flow type, the SCC model does not require space in the fan section.
2. Counter-Flow water and air design increase the heat conductivity efficiency thus reduce the power consumption.
3. Fiber Reinforced Plastic (FRP) construction for the water basin part for durability and easy to maintenance.
4. The Outer Casing material made of PVC for durability yet enhances the appealing exterior look.
5. Perfect for Industrial factory and District air and Heat center system.

Counter flow type

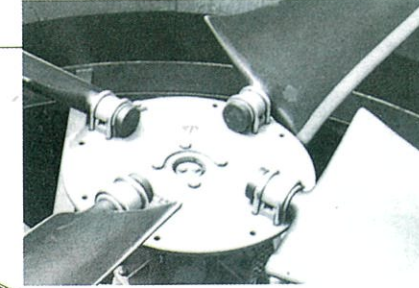
Warm water circulated back into the cooling tower come nozzle which located on the top of "Fill" create the constant cooling water flow. The warm water will mix with the counter-direction airflow which was drawn by the cooling fan from the lower louver. The evaporated water during the process takes the heat away then the cooled water is circulated into the cool water tank in the lower section of the tower which will be supplied to each unit required in the system.



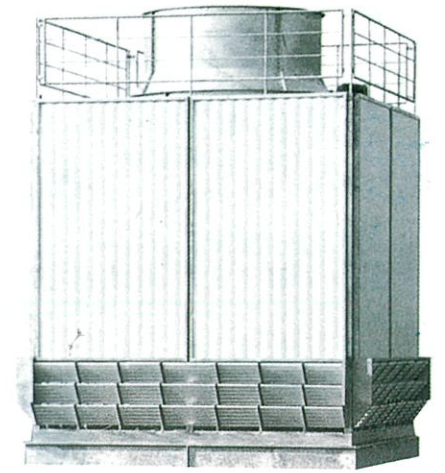
**Less resources, less spaces, low maintenance,
Shinwa thinks together with everybody.**



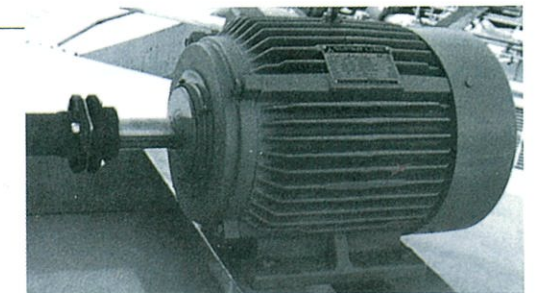
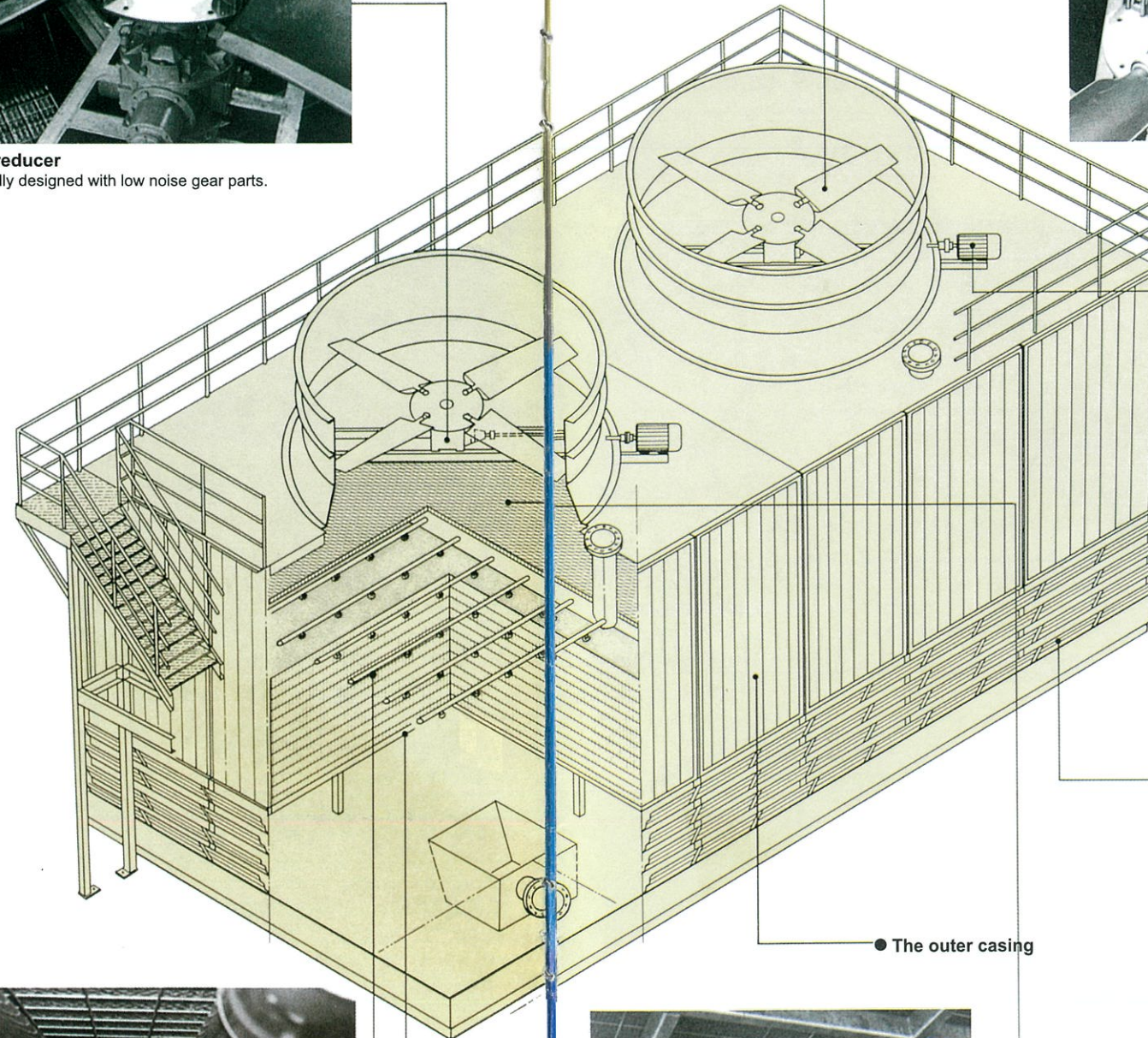
● **Gear reducer**
Specially designed with low noise gear parts.



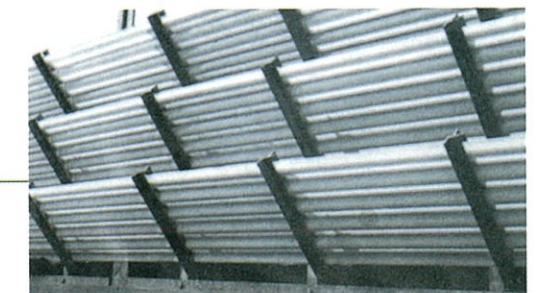
● **Fan**
Highly efficient fan, shaft made of lightweight FRP gives the excellent anti-corrosive ability and waterproof.



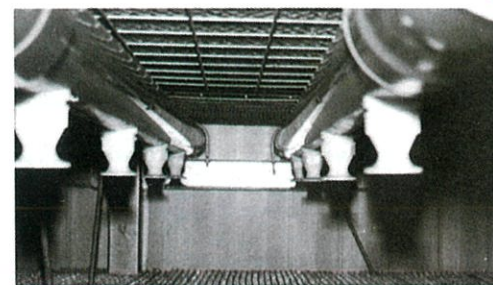
● **The outer casing**
Made of PVC for excellent strength and durability.



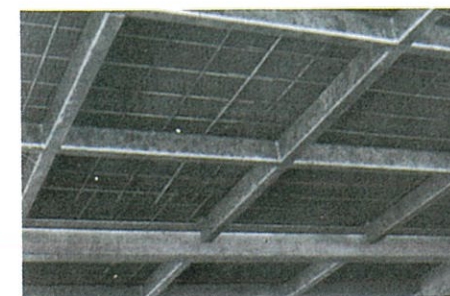
● **Motor & Coupling**
Highly efficient motor with simple construction coupling yet produces high torque ensure reliability and long life.



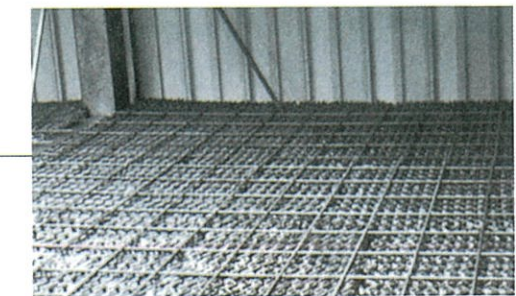
● **Louver**
Made of FRP. special air inlet design secures the unit the water splashing outside.



● **Watering nozzle & Fill**
Nozzle made of Polyester Resin, which was designed and developed to have excellent performance which gives the constant water spray and requires lower pressure force.



● **Fill support**
Made of highly durable Hot-dip galvanized steel.



● **Eliminator**
Made of PVC. designed to reduce water splashing.

● **The outer casing**