



RoHS TEST REPORT

Prepared for :

SHENZHEN VANSU TECHNOLOGY CO., LTD

**Room 1008, 10th Floor, Wangcheng Building, Longguan East Road, Longhua
Street, Longhua District, Shenzhen, China**

Product: Air purifier

Trade Name: N/A

Model Name: XD001, WC001, WT-O20

Date of Test: May 22, 2020 - May 28, 2020

Date of Report: May 28, 2020

Report Number: HK2005200254-1RR

Prepared By :

Shenzhen HUAK Testing Technology Co., Ltd.

**1F, B2 Building, Junfeng Zhongcheng Zhizao Innovation Park, Heping
Community, Fuhai Street, Bao'an District, Shenzhen, China**

TEL: +86-755-2302 9901 FAX: +86-755-2302 9901

E-mail: service@cer-mark.com <http://www.cer-mark.com>



TEST RESULT CERTIFICATION

Applicant : SHENZHEN VANSU TECHNOLOGY CO., LTD
Address : Room 1008, 10th Floor, Wangcheng Building, Longguan East Road, Longhua Street, Longhua District, Shenzhen, China
Manufacturer : SHENZHEN VANSU TECHNOLOGY CO., LTD
Address : Room 1008, 10th Floor, Wangcheng Building, Longguan East Road, Longhua Street, Longhua District, Shenzhen, China
Product name : Air purifier
Product model : XD001, WC001, WT-O20
Trade Name : N/A
Date of Sample Received : May 22, 2020
Testing Period : May 22, 2020 - May 28, 2020

Test Requested:

Based on the verification results of the submitted samples, the results of Lead, Mercury, Cadmium, Hexavalent chromium, Polybrominated biphenyls (PBBs), Polybrominated diphenyl ethers (PBDEs) do not exceed the limits as set by RoHS. Directive 2015/863/EU amending Annex II to Directive 2011/65/EU.

Conclusion

PASS

Prepared by:

Chris Yao

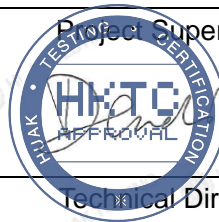
Project Engineer

Checked By:

Judy Qin

Project Supervisor

Approved by:



Technical Director



**** Modified History ****

Revision	Description	Issued Data	Remark
Revision 1.0	Initial Test Report Release	2020/05/28	James Zhou



Test Method:

Heavy Metals and Flame Retardants Content – European Council Directive 2011/65/EU on the Restriction of the Use of Certain Hazardous Substances in Electrical and Electronic Equipment (RoHS)

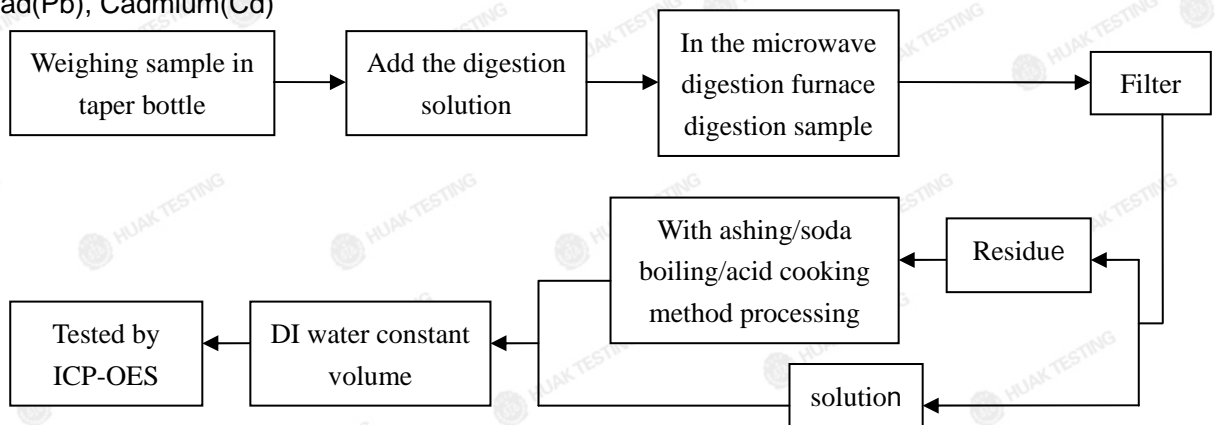
Testing item	Pretreatment method	Measuring instrument	MDL
Lead(Pb)	EN 62321-5:2014 EN 62321-4:2014	ICP-AES	2 mg/kg
Cadmium(Cd)			
Mercury(Hg)			
Chromium(Cr VI)	EN 62321-7-1:2015 EN 62321-7-2:2017 ISO17075-1:2017	UV-Vis	2 mg/kg
PBBs/ PBDEs	IEC 62321-6:2015	GC-MS	5 mg/kg

Phthalates content – European Council Directive 2011/65/EU and Change-Directive 2015/863/EU on the Restriction of the Use of Certain Hazardous Substances in Electrical and Electronic Equipment (RoHS) Test Method: Sample was extracted with organic solvent and then analyzed by Gas Chromatograph Mass Spectrometer.

Testing item	Pretreatment method	Measuring instrument	MDL
DEHP/DBP/BBP/ DIBP	IEC 62321-8:2017	GC-MS	0.003 mg/kg

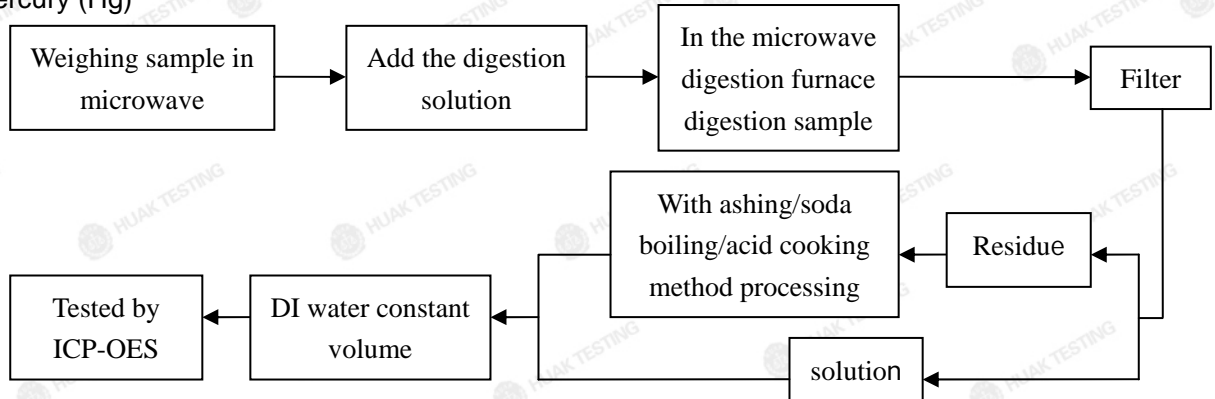
Test Flow:

1. Lead(Pb), Cadmium(Cd)

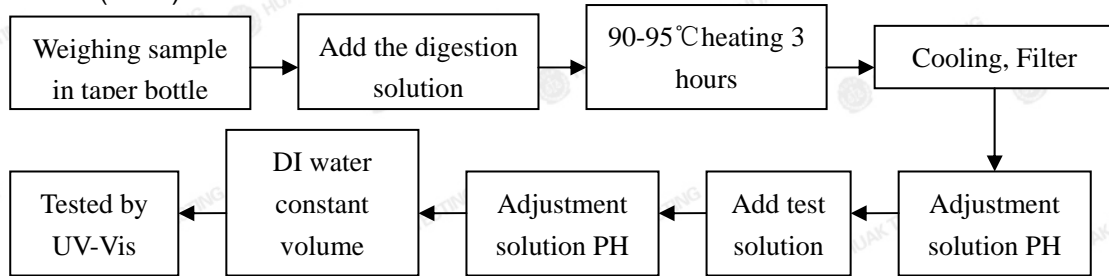




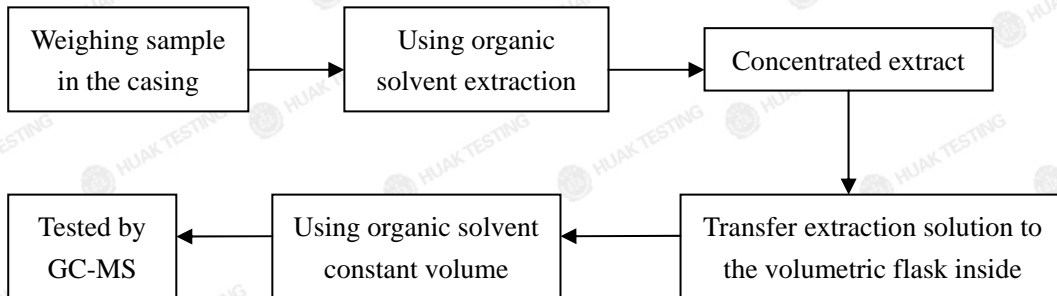
2. Mercury (Hg)



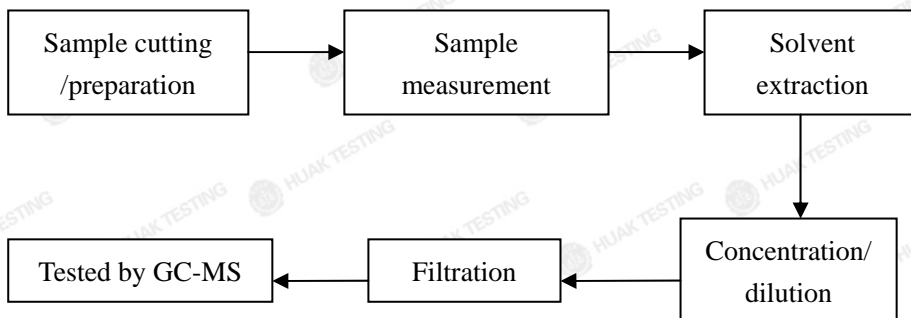
3. Chromium(Cr VI)



4. PBBs/ PBDEs



5. DEHP/ BBP/ DBP/ DIBP



**Test Results:**

Testing Item	Unit	ROHS Limit	Result					
			1	2	3	4	5	6
Lead(Pb)	mg/kg	1000	N.D.	N.D.	N.D.	N.D.	N.D.	N.D.
Cadmium(Cd)	mg/kg	100	N.D.	N.D.	N.D.	N.D.	N.D.	N.D.
Mercury(Hg)	mg/kg	1000	N.D.	N.D.	N.D.	N.D.	N.D.	N.D.
Chromium(Cr VI)	mg/kg	1000	N.D.	N.D.	N.D.	N.D.	N.D.	N.D.
Sum of PBBs/ PBDEs	mg/kg	1000	N.D.	N.D.	N.D.	N.D.	N.D.	N.D.
Monobromobiphenyl	mg/kg	/	N.D.	N.D.	N.D.	N.D.	N.D.	N.D.
Dibromobiphenyl	mg/kg	/	N.D.	N.D.	N.D.	N.D.	N.D.	N.D.
Tribromobiphenyl	mg/kg	/	N.D.	N.D.	N.D.	N.D.	N.D.	N.D.
Tetrabromobiphenyl	mg/kg	/	N.D.	N.D.	N.D.	N.D.	N.D.	N.D.
Pentabromobiphenyl	mg/kg	/	N.D.	N.D.	N.D.	N.D.	N.D.	N.D.
Hexabromobiphenyl	mg/kg	/	N.D.	N.D.	N.D.	N.D.	N.D.	N.D.
Heptabromobiphenyl	mg/kg	/	N.D.	N.D.	N.D.	N.D.	N.D.	N.D.
Octabromobiphenyl	mg/kg	/	N.D.	N.D.	N.D.	N.D.	N.D.	N.D.
Nonabromobiphenyl	mg/kg	/	N.D.	N.D.	N.D.	N.D.	N.D.	N.D.
Decabromobiphenyl	mg/kg	/	N.D.	N.D.	N.D.	N.D.	N.D.	N.D.
Monobromodiphenyl ether	mg/kg	/	N.D.	N.D.	N.D.	N.D.	N.D.	N.D.
Dibromodiphenyl ether	mg/kg	/	N.D.	N.D.	N.D.	N.D.	N.D.	N.D.
Tribromodiphenyl ether	mg/kg	/	N.D.	N.D.	N.D.	N.D.	N.D.	N.D.
Tetrabromodiphenyl ether	mg/kg	/	N.D.	N.D.	N.D.	N.D.	N.D.	N.D.
Pentabromodiphenyl ether	mg/kg	/	N.D.	N.D.	N.D.	N.D.	N.D.	N.D.
Hexabromodiphenyl ether	mg/kg	/	N.D.	N.D.	N.D.	N.D.	N.D.	N.D.
Heptabromodiphenyl ether	mg/kg	/	N.D.	N.D.	N.D.	N.D.	N.D.	N.D.
Octabromodiphenyl ether	mg/kg	/	N.D.	N.D.	N.D.	N.D.	N.D.	N.D.
Nonabromodiphenyl ether	mg/kg	/	N.D.	N.D.	N.D.	N.D.	N.D.	N.D.
Decabromodiphenyl ether	mg/kg	/	N.D.	N.D.	N.D.	N.D.	N.D.	N.D.
Bis-(2-ethylhexyl) Phthalate (DEHP)	mg/kg	1000	N.D.	N.D.	N.D.	N.D.	N.D.	N.D.
Benzylbutyl Phthalate (BBP)	mg/kg	1000	N.D.	N.D.	N.D.	N.D.	N.D.	N.D.
Dibutyl Phthalate (DBP)	mg/kg	1000	N.D.	N.D.	N.D.	N.D.	N.D.	N.D.
Di-isobutyl phthalate (DIBP)	mg/kg	1000	N.D.	N.D.	N.D.	N.D.	N.D.	N.D.

Sample Description:

- 1 Battery
- 2 Ozonator
- 3 Control panel
- 4 ABS plastic
- 5 Fan
- 6 Plastic casing

The results shown in this test report refer only to the sample(s) tested unless otherwise stated and the sample(s) are retained for 30 days only. The document is issued by HUAKE, this document cannot be reproduced except in full with our prior written permission. The more details and the authenticity of the report will be confirmed at <http://www.cer-mark.com>.



Testing Item	Unit	ROHS Limit	Result					
			7	8	9	10	11	12
Lead(Pb)	mg/kg	1000	N.D.	N.D.	N.D.	N.D.	N.D.	N.D.
Cadmium(Cd)	mg/kg	100	N.D.	N.D.	N.D.	N.D.	N.D.	N.D.
Mercury(Hg)	mg/kg	1000	N.D.	N.D.	N.D.	N.D.	N.D.	N.D.
Chromium(Cr VI)	mg/kg	1000	N.D.	N.D.	N.D.	N.D.	N.D.	N.D.
Sum of PBBs/ PBDEs	mg/kg	1000	N.D.	N.D.	N.D.	N.D.	N.D.	N.D.
Monobromobiphenyl	mg/kg	/	N.D.	N.D.	N.D.	N.D.	N.D.	N.D.
Dibromobiphenyl	mg/kg	/	N.D.	N.D.	N.D.	N.D.	N.D.	N.D.
Tribromobiphenyl	mg/kg	/	N.D.	N.D.	N.D.	N.D.	N.D.	N.D.
Tetrabromobiphenyl	mg/kg	/	N.D.	N.D.	N.D.	N.D.	N.D.	N.D.
Pentabromobiphenyl	mg/kg	/	N.D.	N.D.	N.D.	N.D.	N.D.	N.D.
Hexabromobiphenyl	mg/kg	/	N.D.	N.D.	N.D.	N.D.	N.D.	N.D.
Heptabromobiphenyl	mg/kg	/	N.D.	N.D.	N.D.	N.D.	N.D.	N.D.
Octabromobiphenyl	mg/kg	/	N.D.	N.D.	N.D.	N.D.	N.D.	N.D.
Nonabromobiphenyl	mg/kg	/	N.D.	N.D.	N.D.	N.D.	N.D.	N.D.
Decabromobiphenyl	mg/kg	/	N.D.	N.D.	N.D.	N.D.	N.D.	N.D.
Monobromodiphenyl ether	mg/kg	/	N.D.	N.D.	N.D.	N.D.	N.D.	N.D.
Dibromodiphenyl ether	mg/kg	/	N.D.	N.D.	N.D.	N.D.	N.D.	N.D.
Tribromodiphenyl ether	mg/kg	/	N.D.	N.D.	N.D.	N.D.	N.D.	N.D.
Tetrabromodiphenyl ether	mg/kg	/	N.D.	N.D.	N.D.	N.D.	N.D.	N.D.
Pentabromodiphenyl ether	mg/kg	/	N.D.	N.D.	N.D.	N.D.	N.D.	N.D.
Hexabromodiphenyl ether	mg/kg	/	N.D.	N.D.	N.D.	N.D.	N.D.	N.D.
Heptabromodiphenyl ether	mg/kg	/	N.D.	N.D.	N.D.	N.D.	N.D.	N.D.
Octabromodiphenyl ether	mg/kg	/	N.D.	N.D.	N.D.	N.D.	N.D.	N.D.
Nonabromodiphenyl ether	mg/kg	/	N.D.	N.D.	N.D.	N.D.	N.D.	N.D.
Decabromodiphenyl ether	mg/kg	/	N.D.	N.D.	N.D.	N.D.	N.D.	N.D.
Bis-(2-ethylhexyl) Phthalate (DEHP)	mg/kg	1000	N.D.	N.D.	N.D.	N.D.	N.D.	N.D.
Benzylbutyl Phthalate (BBP)	mg/kg	1000	N.D.	N.D.	N.D.	N.D.	N.D.	N.D.
Dibutyl Phthalate (DBP)	mg/kg	1000	N.D.	N.D.	N.D.	N.D.	N.D.	N.D.
Di-isobutyl phthalate (DIBP)	mg/kg	1000	N.D.	N.D.	N.D.	N.D.	N.D.	N.D.

Sample Description:

- 7 On/off keying
- 8 Rubber dust cover
- 9 Rubber blanket
- 10 Wire
- 11 Screw
- 12 PCB

The results shown in this test report refer only to the sample(s) tested unless otherwise stated and the sample(s) are retained for 30 days only. The document is issued by HUAKE, this document cannot be reproduced except in full with our prior written permission. The more details and the authenticity of the report will be confirmed at <http://www.cer-mark.com>.

HUAKE Testing Lab TEL : +86-755 2302 9901 FAX : +86-755 2302 9901 E-mail : service@cer-mark.com

Add: 1/F., Building B2, Junfeng Zhongcheng Zhizao Innovation Park, Heping Community, Fuhai Street, Bao'an District, Shenzhen, Guangdong, China



Testing Item	Unit	ROHS Limit	Result					
			13	14	15	16	17	18
Lead(Pb)	mg/kg	1000	N.D.	N.D.	N.D.	N.D.	/	/
Cadmium(Cd)	mg/kg	100	N.D.	N.D.	N.D.	N.D.	/	/
Mercury(Hg)	mg/kg	1000	N.D.	N.D.	N.D.	N.D.	/	/
Chromium(Cr VI)	mg/kg	1000	N.D.	N.D.	N.D.	N.D.	/	/
Sum of PBBs/ PBDEs	mg/kg	1000	N.D.	N.D.	N.D.	N.D.	/	/
Monobromobiphenyl	mg/kg	/	N.D.	N.D.	N.D.	N.D.	/	/
Dibromobiphenyl	mg/kg	/	N.D.	N.D.	N.D.	N.D.	/	/
Tribromobiphenyl	mg/kg	/	N.D.	N.D.	N.D.	N.D.	/	/
Tetrabromobiphenyl	mg/kg	/	N.D.	N.D.	N.D.	N.D.	/	/
Pentabromobiphenyl	mg/kg	/	N.D.	N.D.	N.D.	N.D.	/	/
Hexabromobiphenyl	mg/kg	/	N.D.	N.D.	N.D.	N.D.	/	/
Heptabromobiphenyl	mg/kg	/	N.D.	N.D.	N.D.	N.D.	/	/
Octabromobiphenyl	mg/kg	/	N.D.	N.D.	N.D.	N.D.	/	/
Nonabromobiphenyl	mg/kg	/	N.D.	N.D.	N.D.	N.D.	/	/
Decabromobiphenyl	mg/kg	/	N.D.	N.D.	N.D.	N.D.	/	/
Monobromodiphenyl ether	mg/kg	/	N.D.	N.D.	N.D.	N.D.	/	/
Dibromodiphenyl ether	mg/kg	/	N.D.	N.D.	N.D.	N.D.	/	/
Tribromodiphenyl ether	mg/kg	/	N.D.	N.D.	N.D.	N.D.	/	/
Tetrabromodiphenyl ether	mg/kg	/	N.D.	N.D.	N.D.	N.D.	/	/
Pentabromodiphenyl ether	mg/kg	/	N.D.	N.D.	N.D.	N.D.	/	/
Hexabromodiphenyl ether	mg/kg	/	N.D.	N.D.	N.D.	N.D.	/	/
Heptabromodiphenyl ether	mg/kg	/	N.D.	N.D.	N.D.	N.D.	/	/
Octabromodiphenyl ether	mg/kg	/	N.D.	N.D.	N.D.	N.D.	/	/
Nonabromodiphenyl ether	mg/kg	/	N.D.	N.D.	N.D.	N.D.	/	/
Decabromodiphenyl ether	mg/kg	/	N.D.	N.D.	N.D.	N.D.	/	/
Bis-(2-ethylhexyl) Phthalate (DEHP)	mg/kg	1000	N.D.	N.D.	N.D.	N.D.	/	/
Benzylbutyl Phthalate (BBP)	mg/kg	1000	N.D.	N.D.	N.D.	N.D.	/	/
Dibutyl Phthalate (DBP)	mg/kg	1000	N.D.	N.D.	N.D.	N.D.	/	/
Di-isobutyl phthalate (DIBP)	mg/kg	1000	N.D.	N.D.	N.D.	N.D.	/	/

Sample Description:

- 13 Chip inductor
- 14 Resistance
- 15 Chip
- 16 Soldering tin

The results shown in this test report refer only to the sample(s) tested unless otherwise stated and the sample(s) are retained for 30 days only. The document is issued by HUAKE, this document cannot be reproduced except in full with our prior written permission. The more details and the authenticity of the report will be confirmed at <http://www.cer-mark.com>.

HUAKE Testing Lab TEL : +86-755 2302 9901 FAX : +86-755 2302 9901 E-mail : service@cer-mark.com

Add: 1/F., Building B2, Junfeng Zhongcheng Zhizao Innovation Park, Heping Community, Fuhai Street, Bao'an District, Shenzhen, Guangdong, China



Notes:

1mg/kg=1ppm = 0.0001%

N.D. = Not Detected (<MDL)

MDL = Method Detection Limit

/=Not Regulated

---=Not Applicable

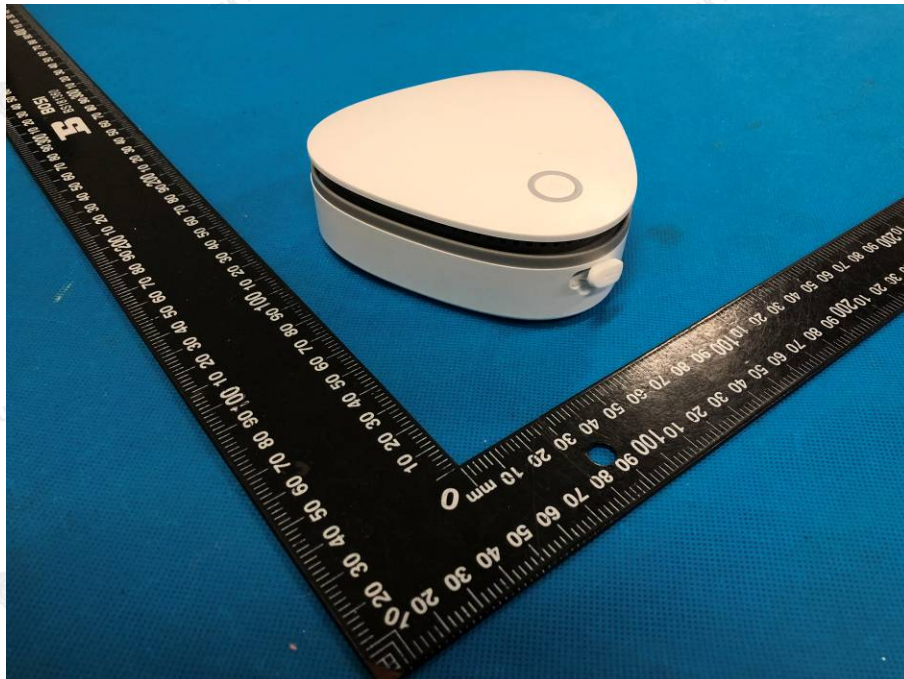
Breakdown of product



Sample photo: 1

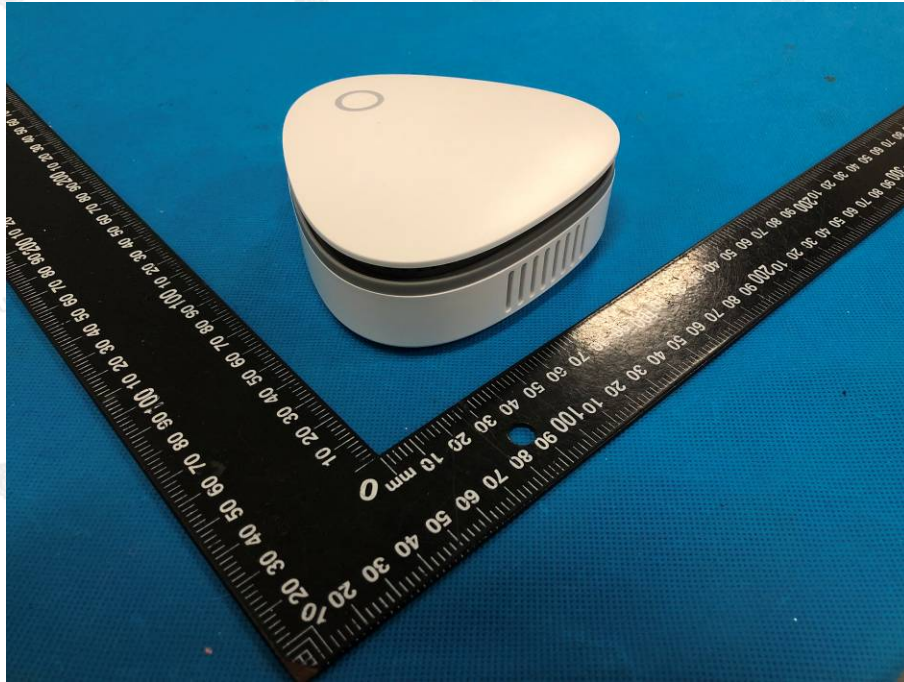


Sample photo: 2





Sample photo: 3



Sample photo: 4



The results shown in this test report refer only to the sample(s) tested unless otherwise stated and the sample(s) are retained for 30 days only. The document is issued by HUAK, this document cannot be reproduced except in full with our prior written permission. The more details and the authenticity of the report will be confirmed at <http://www.cer-mark.com>.

HUAK Testing Lab TEL : +86-755 2302 9901 FAX : +86-755 2302 9901 E-mail : service@cer-mark.com

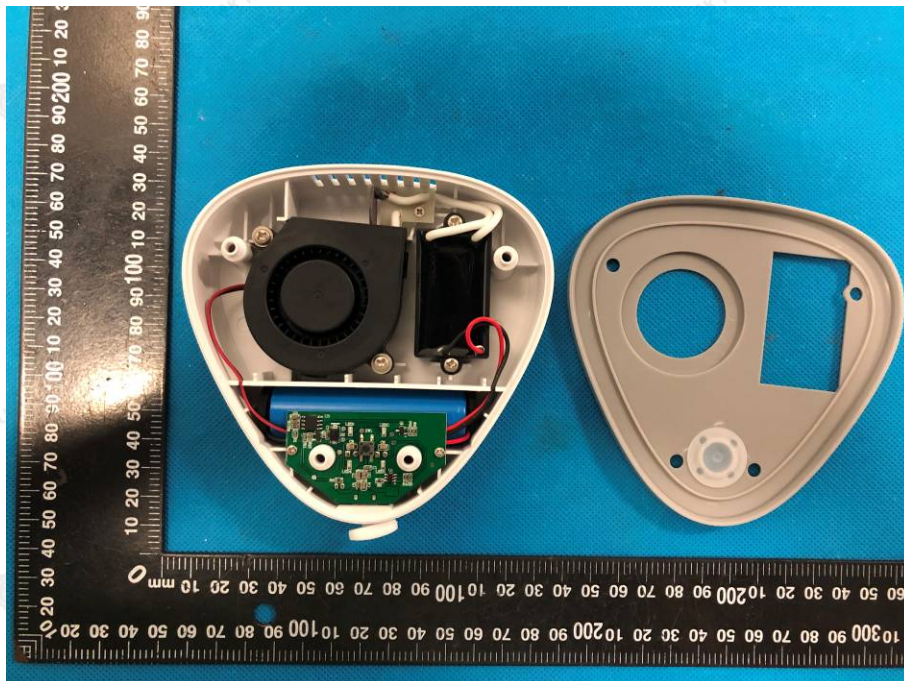
Add: 1/F., Building B2, Junfeng Zhongcheng Zhizao Innovation Park, Heping Community, Fuhai Street, Bao'an District, Shenzhen, Guangdong, China



Sample photo: 5

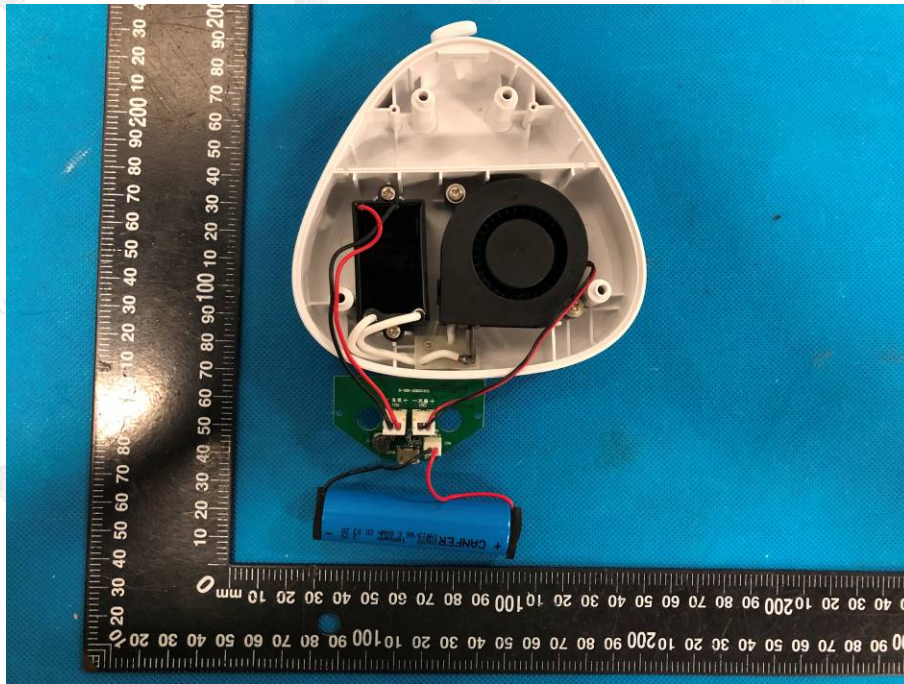


Sample photo: 6

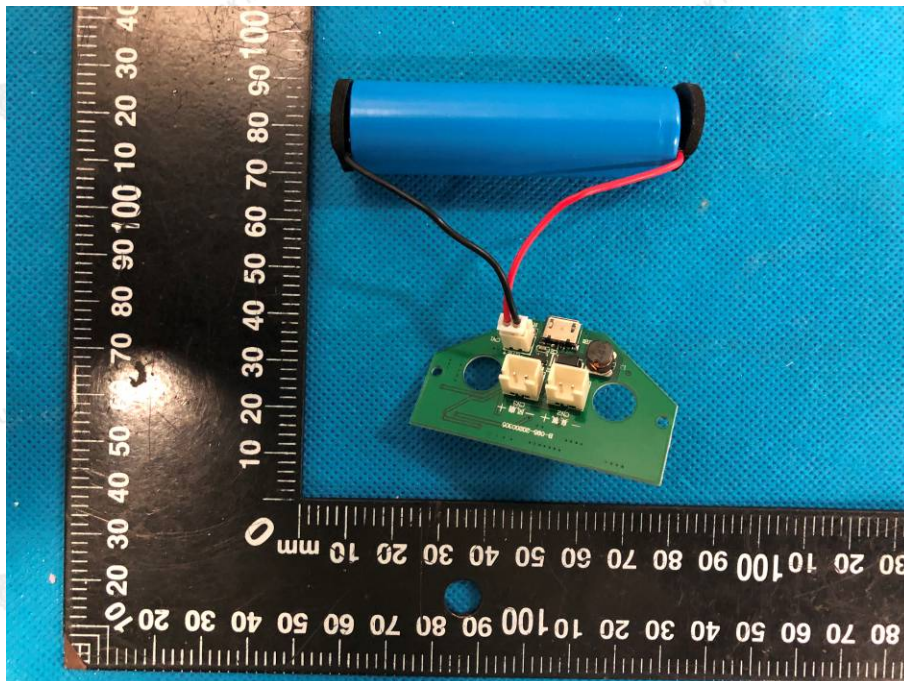




Sample photo: 7

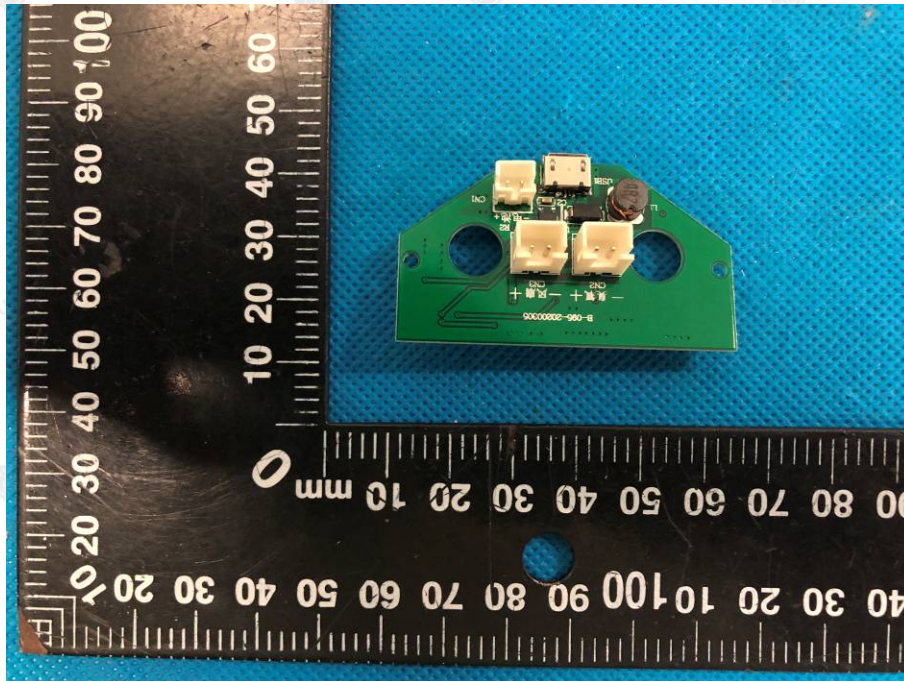


Sample photo: 8

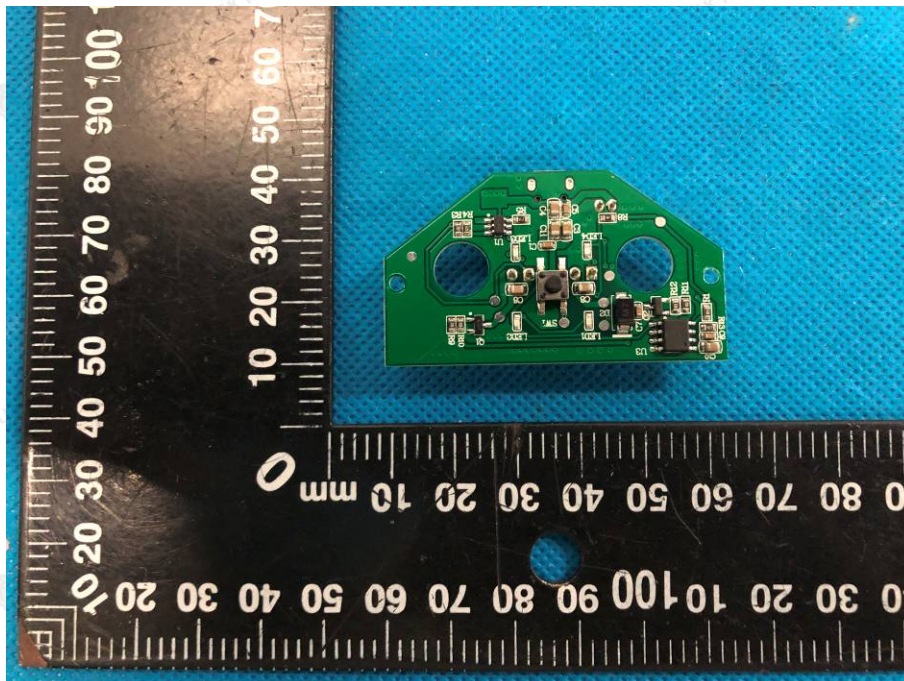




Sample photo: 9



Sample photo: 10



.....End of Report.....