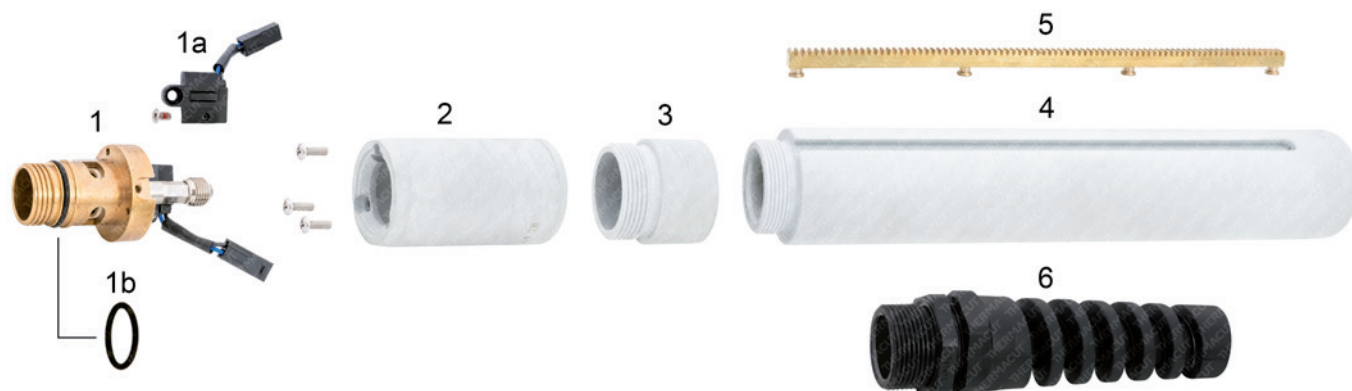


**THERMACUT® REPLACEMENT PARTS SUITABLE FOR**  
**Hypertherm®**  
**POWERMAX® 65 / POWERMAX® 85 / POWERMAX® 105**  
**DURAMAX® MACHINE TORCH**



Item	Part No.	Ref. No.	Description	Std. Pkg.	Item	Part No.	Ref. No.	Description	Std. Pkg.
*1.	T-12256	228716	Torch Body DMX65M/85M/105M	1	3.	T-12257	228736	Adaptor Ring	1
1a.	T-13121	228720	Cap Sensor Replacement	1	4.	T-12258	228737	Tube L228	1
1b.	N-18406	O-KR-17x1,5G	O-Ring	1	5.	T-12259	228738-UR	Gear Rack	1
2.	T-12223	228735	Torch Front Sleeve + Screws	1	6.	N-19548	N-19548	Plastic Protection	1

\* INCLUDING PARTS 1, 1a.

**Last update of this page: 28/02/2020. See Revision history for details.**

**THERMACUT®**  
 THE CUTTING COMPANY

WWW.THERMACUT.CZ  
 TEL.: +420.556 423 418  
 SALES@THERMACUT.CZ

WWW.THERMACUT.DE  
 TEL.: +49 (0) 27 39 40 33 0  
 INFO@THERMACUT.DE

WWW.THERMACUT.COM  
 TEL.: 1-603-542-6715  
 CUSTOMERSERVICE@THERMACUT.COM

THERMACUT®, THE CUTTING COMPANY®, FHT-EX®, EX-TRAFIRE®, EX-TRACK® AND EX-TRABEAM® ARE REGISTERED TRADEMARKS OF THERMACUT, K.S. AND MAY BE REGISTERED IN CZECH REPUBLIC AND/OR OTHER COUNTRIES. ALL OTHER TRADEMARKS ARE PROPERTIES OF THEIR RESPECTIVE OWNERS. THERMACUT IS NO WAY AFFILIATED WITH Hypertherm®. MOST THERMACUT PARTS ARE MADE FOR OR BY AN IBG COMPANY. PARTS INDICATED WITH A OEM ARE ORIGINAL PARTS MANUFACTURED BY THE ABOVE NAMED MANUFACTURER AND ARE BEING RESOLD BY THERMACUT. THERMACUT RESERVES THE RIGHT TO SUBSTITUTE OEM PARTS IN PLACE OF THERMACUT PARTS.  
 VALID FROM FEBRUARY 2020 • PREVIOUS VERSION IS NO LONGER VALID. • © COPYRIGHT 2020 BY THERMACUT® CZECH REPUBLIC. ALL RIGHTS RESERVED.