



Commercial offer of wooden modular house from Thermowood Production



+38(067)410-49-33 – Tel, Viber, WhatsApp, Telegram

<https://lestorg.org.ua>

[Our Youtube chanel](#)

14 m²

Modular house with a terrace 14 m²

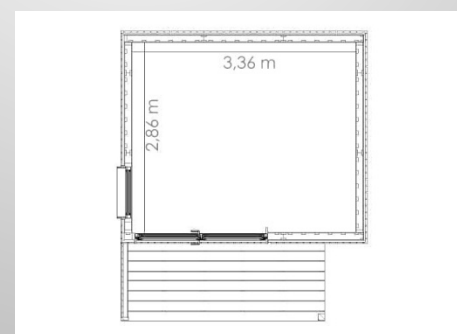
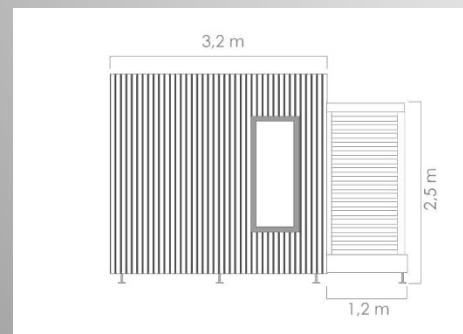
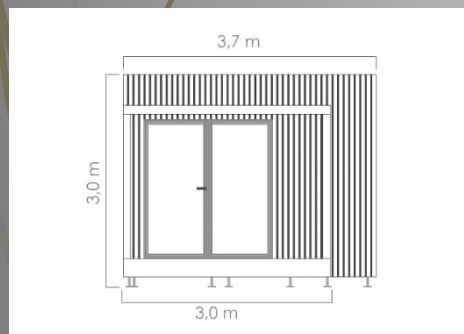
The house is delivered ready-made, if installation is necessary on the territory of the Customer, the installation is 10% of the price of the house.

Dimensions:

- Height - 3.0 m
- Length – 3.7 m
- Width - 3.2 m

The living area is 11.0 m².
Terrace 2.5x1.2m with an area of 3.0 m².
The total area is 14.0 m².
Changes are possible in the project.

Price 8 999€



+38(067)410-49-33 – Tel, Viber, WhatsApp, Telegram

18 m²

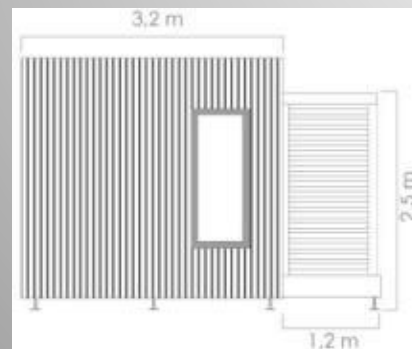
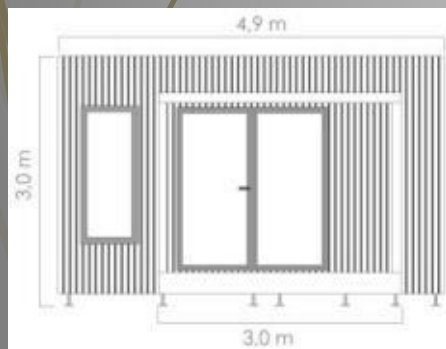
Modular house with a terrace 18 m²

The house is delivered ready-made, if installation is necessary on the territory of the Customer, the installation is 10% of the price of the house.

Dimensions:

- Height - 3.0 m
- Length – 4.9 m
- Width - 3.2 m

The living area is 15.0 m².
Terrace 2.5x1.2m with an area of 3.0 m².
The total area is 18.0 m².
Changes are possible in the project.



Price 11 539€



+38(067)410-49-33 – Tel, Viber, WhatsApp, Telegram

21 m²

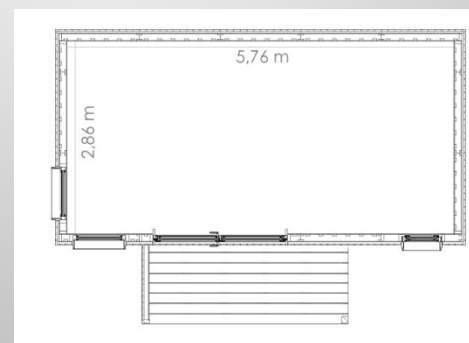
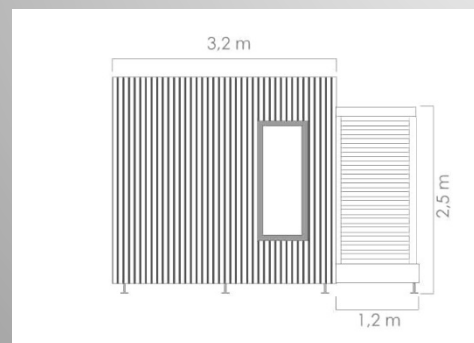
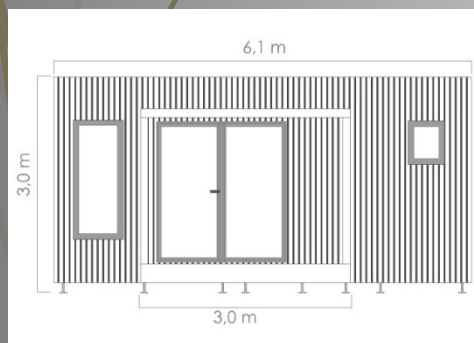
Modular house with a terrace 21 m²

The house is delivered ready-made, if installation is necessary on the territory of the Customer, the installation is 10% of the price of the house.

Dimensions:

- Height - 3.0 m
- Length – 6.1 m
- Width - 3.2 m

The living area is 18.0 m².
Terrace 2.5x1.2m with an area of 3.0 m².
The total area is 21.0 m².
Changes are possible in the project.

Price 13 460€

+38(067)410-49-33 – Tel, Viber, WhatsApp, Telegram

23 m²

Modular house with a terrace 23 m²

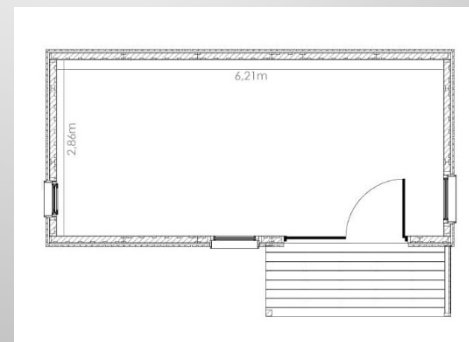
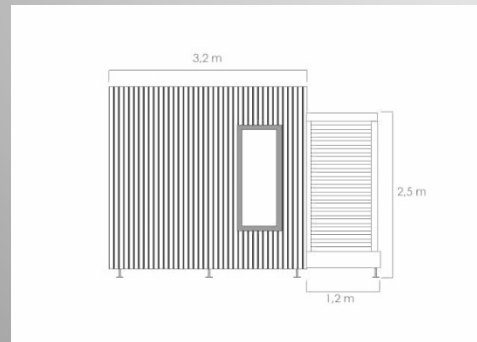
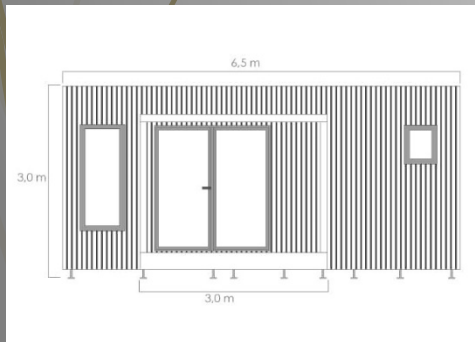
The house is delivered ready-made, if installation is necessary on the territory of the Customer, the installation is 10% of the price of the house.

Dimensions:

- Height - 3.0 m
- Length – 6.5 m
- Width - 3.2 m

The living area is 20.0 m².
Terrace 2.5x1.2m with an area of 3.0 m².
The total area is 23.0 m².
Changes are possible in the project.

Price 14 744€



+38(067)410-49-33 – Tel, Viber, WhatsApp, Telegram

33 m²

Modular house with a terrace 33 m²

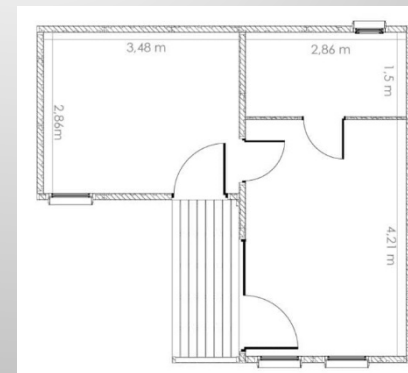
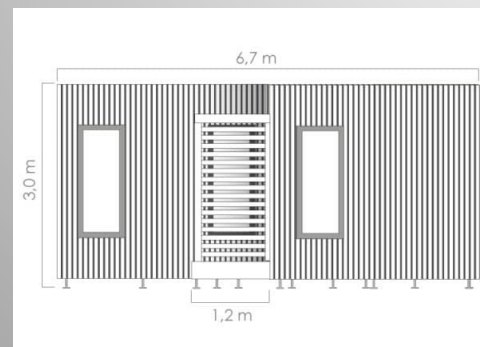
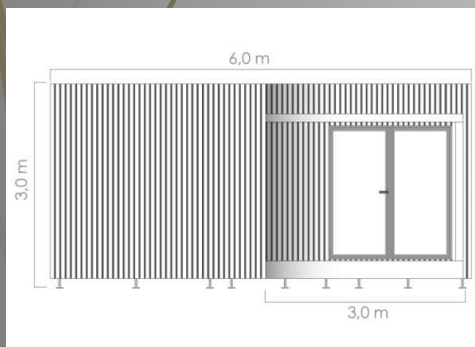
The house is delivered ready-made, if installation is necessary on the territory of the Customer, the installation is 10% of the price of the house.

Dimensions:

- Height - 3.0 m
- Length – 6.0 m
- Width - 6.7 m

The living area is 30.0 m².
Terrace 2.5x1.2m with an area of 3.0 m².
The total area is 33.0 m².
Changes are possible in the project.

Price 21 154€



+38(067)410-49-33 – Tel, Viber, WhatsApp, Telegram

43 m²

Modular house with a terrace 43 m²

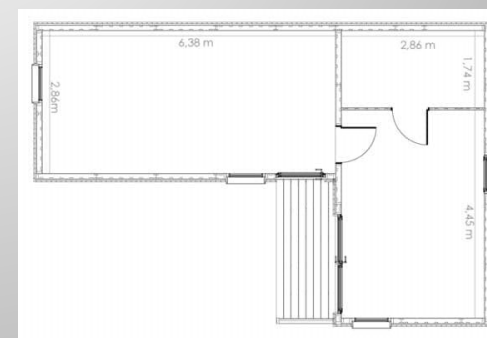
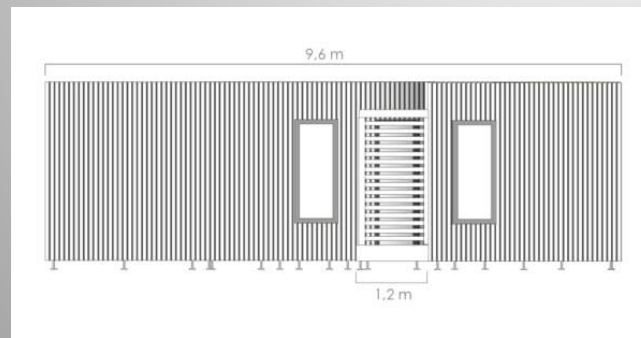
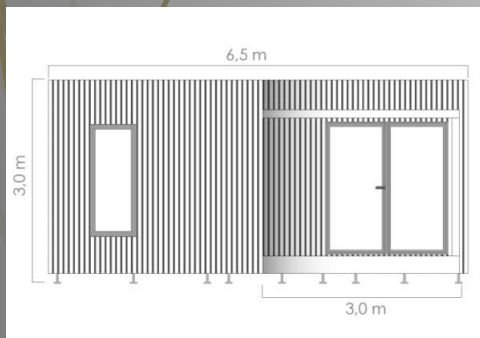
The house is delivered ready-made, if installation is necessary on the territory of the Customer, the installation is 10% of the price of the house.

Dimensions:

- Height - 3.0 m
- Length – 6.5 m
- Width - 9.6 m

The living area is 40.0 m².
Terrace 2.5x1.2m with an area of 3.0 m².
The total area is 43.0 m².
Changes are possible in the project.

Price 27 564€



+38(067)410-49-33 – Tel, Viber, WhatsApp, Telegram

50 m²

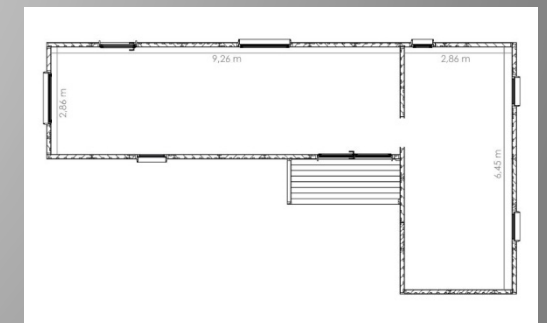
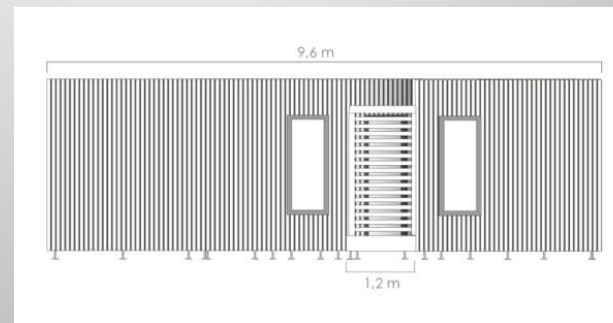
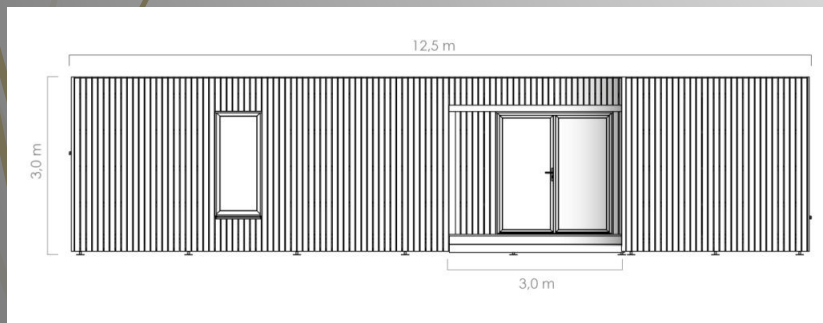
Modular house with a terrace 50 m²

The house is delivered ready-made, if installation is necessary on the territory of the Customer, the installation is 10% of the price of the house.

Dimensions:

- Height - 3.0 m
- Length – 12.5 m
- Width - 6.7 m

The total area is 50.0 m².
Changes are possible in the project.

Price 32 051€

+38(067)410-49-33 – Tel, Viber, WhatsApp, Telegram

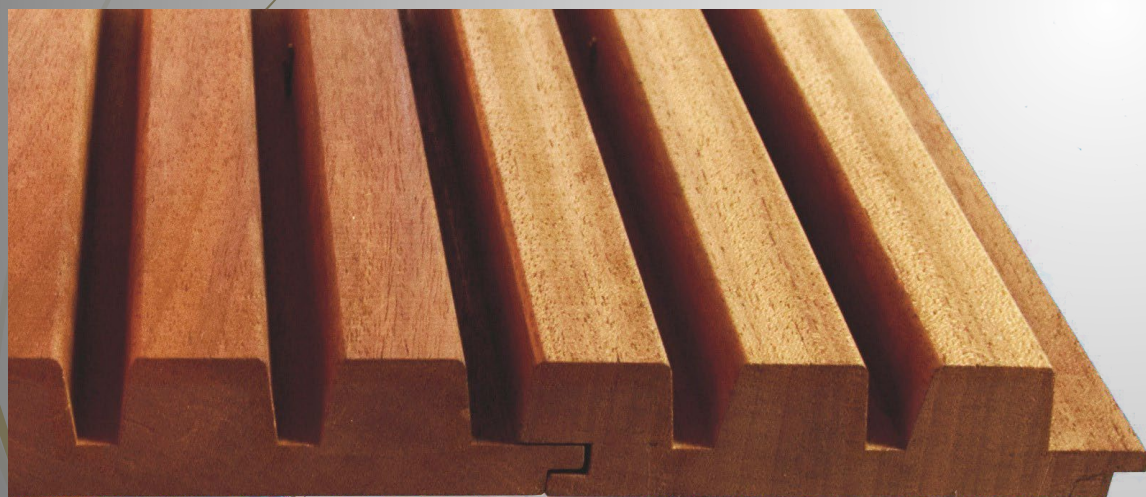
Specifications:

| | |
|---------------|--|
| Frame | Wooden, made of calibrated pine bar 150*40mm; 100*40mm; dried to 12% moisture |
| Floor | OSB-10mm EGGER OSB 3; wind protection membrane JUTA W2 85g/m ² ; insulation 150mm Rockwool Rockmin; vapor protective membrane JUTA 120g/m ² ; 32 mm tongue-and-groove pine floor board |
| The walls | Externally calibrated pine cladding board 110*20mm; rail 40*20mm (for air gap); wind protection membrane JUTA W2 85 g/m ² ; OSB-10mm EGGER OSB 3; insulation 100mm Rockwool Superrock; vapor protective membrane JUTA 120g/m ² ; wooden pine lining. |
| Roof | profiled flooring with polymer coating, wave height 20mm, thickness 0.48mm, amount of zinc 200 g/m ² ; rail 40*20mm (for air gap); wind protection membrane JUTA W2 85g/m ² ; insulation 150 mm Rockwool Rockmin; vapor protective membrane JUTA 120g/m ² ; wooden pine lining. |
| Entrance door | Metal-plastic, manufactured by STEKO |
| Windows | Energy-saving profile, manufacturer STEKO |

+38(067)410-49-33 – Tel, Viber, WhatsApp, Telegram

Specifications:

| | |
|----------------------|--|
| Dyeing | 1 coat of Tikkurila Pinja wood stain - all wooden surfaces are also hidden. 2nd layer of Tikkurila Pinja color plus - all external and internal surfaces. |
| Electrical equipment | Internal wiring: PVA sockets 3×2.5, PVA lighting 3×1, PVA 2×1 Manufacturer INTERELEKTRO; Equipment is not included. |
| Plumbing equipment | Internal laying of sewers and pipelines (cold/hot water) Equipment not included. |



+38(067)410-49-33 – Tel, Viber, WhatsApp, Telegram

Do you still have a questions?

Ask them to our specialist and get an answer with in
15 minutes

We are pleased to invite you to our manufacture!

Export of our products: customs clearance,
registration of the certificate Euro1 to reduce the cost
of customs clearance, phyto certificate.
There are dealers of our products in Europe.



+38(067)410- 49-33 – Tel, Viber, WhatsApp, Telegram

<https://lestorg.org.ua/> [Our Youtube chanel](#)