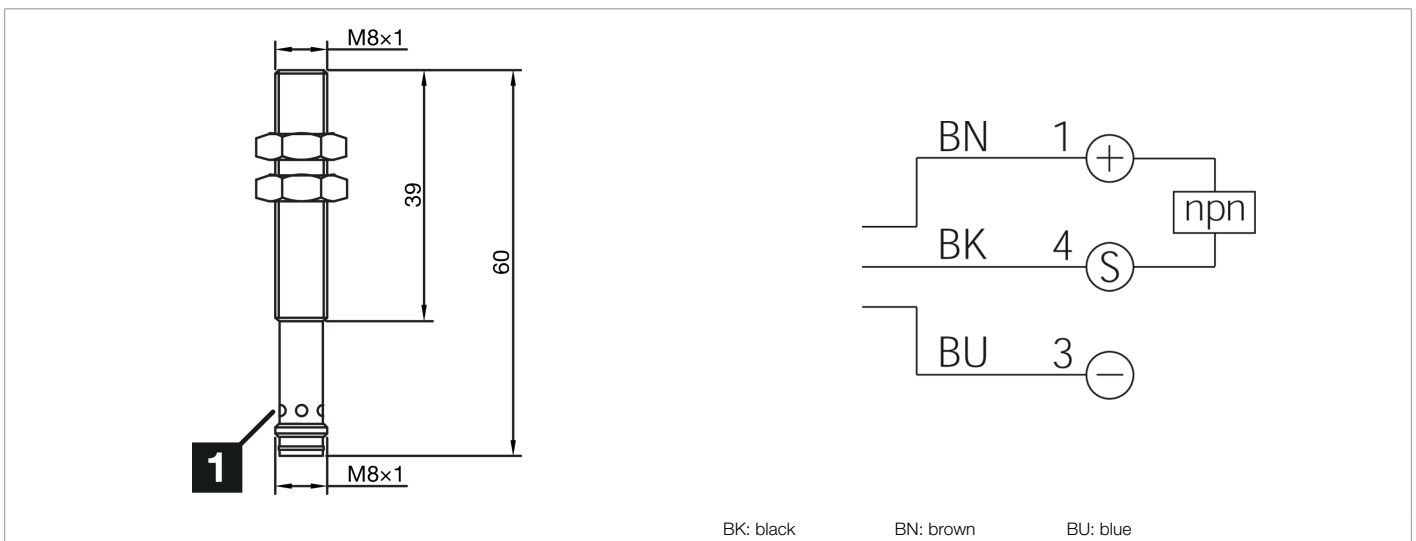
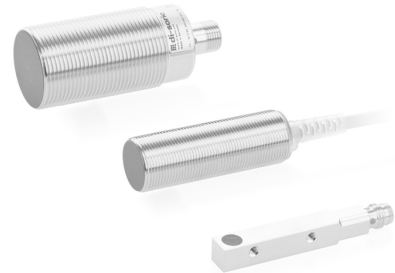




213178
INS-M08-B02NS-T3
Inductive proximity sensor

- Double switching distance
- Metal connector M8
- Short-circuit protection
- LED switching status display
- High protection type



| Function | | | | | | | | | | | |
|----------|--|--|--|--|--|--|--|--|--|--|--|
| | | | | | | | | | | | |

| Technical data (typ.) | +20°C, 24 V DC |
|------------------------------|--|
| Service voltage | 10 ... 30 V DC |
| Internal power consumption | 10 mA |
| Insulation voltage endurance | < 500 V DC |
| Installation type | Flush |
| Thread | M8 x 1 |
| Housing length | 60 mm |
| Housing material | Stainless steel (V2A) |
| Protection class | III, operation on protective low voltage |
| Operating principle | inductive |
| Evaluation | digital |
| Design | Thread |
| Characteristics | Double switching distance |
| Product series | INS-200 Standard 2-SN |
| Switching output | npn, 200 mA, NO |
| Voltage drop (max.) | 1,5 V DC |
| Switching distance (SN) | 2 mm |
| Standardized measuring plate | 8 x 8 x 1 mm |
| Switching hysteresis (max.) | < 10 % |
| LED Anzeige | Yes |
| Switching frequency | 2.000 Hz |



213178
INS-M08-B02NS-T3
Inductive proximity sensor

Technical data (typ.)**+20°C, 24 V DC**

Ambient temperature during operation

-25 ... +70 °C

Protection type

IP 67

Connection

Connector, M8, 3-pin

More information / accessories<https://www.di-soric.com/213178>