



RA12-134(12V134Ah)

Specification

Cells Per Unit	6
Voltage Per Unit	12
Nominal Capacity	134Ah@10hour-rate to 1.80V per cell @25°C
Weight	Approx. 39.0 Kg (Tolerance ±3.0%)
Internal Resistance	Approx. 4.4 mΩ
Terminal	F5(M8)/F12(M8)
Max. Discharge Current	1340A (5 sec)
Short Circuit Current	2480A
Design Life	12 years (Float charging)
Max. Charging Current	40.2 A
Reference Capacity	C3 103.8AH C5 117.0AH C10 134.0AH C20 142.0AH
Standby Use Voltage	13.6 V~13.8 V @ 25°C Temperature Compensation: -3mV/°C/Cell
Cycle Use Voltage	14.6 V~14.8 V @ 25°C Temperature Compensation: -4mV/°C/Cell
Operating Temperature Range	Discharge: -20°C~60°C Charge: 0°C~50°C Storage: -20°C~60°C
Normal Operating Temperature Range	25°C ±5°C
Self Discharge	RITAR Valve Regulated Lead Acid (VRLA) batteries can be stored for up to 6 months at 25°C and then recharging is recommended. Monthly Self-discharge ratio is less than 3% at 25°C. Please charge batteries before using.
Container Material	A.B.S. UL94-HB, UL94-V0 Optional.



RA series is a general purpose battery with 12 years design life in float service. It meets with IEC, JIS, BS, GB/T and YD/T standards. With advanced AGM valve regulated technology and high purity raw material, the RA series battery maintains high consistency for better performance and reliable standby service life. It is suitable for UPS/EPS, Telecom, power grid, medical equipment, emergency light and security system applications.



ISO 9001



ISO 14001



OHSAS 18001

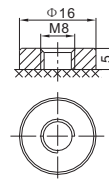
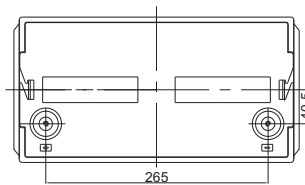
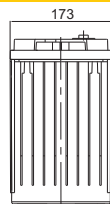
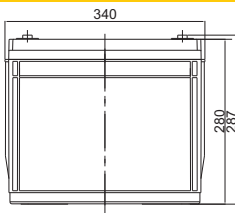


MH 28539



G4M20206-0910-E-16

Dimensions



F12 Terminal

Length	340±2mm (13.4 inches)
Width	173±2mm (6.81 inches)
Height	280±2mm (11.0 inches)
Total Height	287±2mm (11.3 inches)
Terminal	Value
M5	6~7 N*m
M6	8~10 N*m
M8	10~12 N*m

Unit: mm

Constant Current Discharge Characteristics : A (25°C)

F.V/Time	10MIN	15MIN	30MIN	1HR	2HR	3HR	4HR	5HR	8HR	10HR	20HR
1.60V	310.7	244.2	146.7	81.9	48.8	37.8	29.7	25.3	17.0	14.1	7.39
1.65V	293.6	233.5	140.9	79.1	47.2	36.6	28.9	24.6	16.8	14.0	7.28
1.70V	270.3	218.7	134.7	76.5	45.7	35.6	28.1	24.0	16.5	13.8	7.19
1.75V	247.4	203.5	128.7	73.7	44.1	34.6	27.4	23.4	16.3	13.6	7.10
1.80V	224.0	187.9	123.0	70.9	42.5	33.5	26.6	22.8	16.0	13.4	7.03
1.85V	183.0	155.9	105.9	63.6	38.9	31.0	24.7	21.2	15.1	12.6	6.68

Constant Power Discharge Characteristics : WPC (25°C)

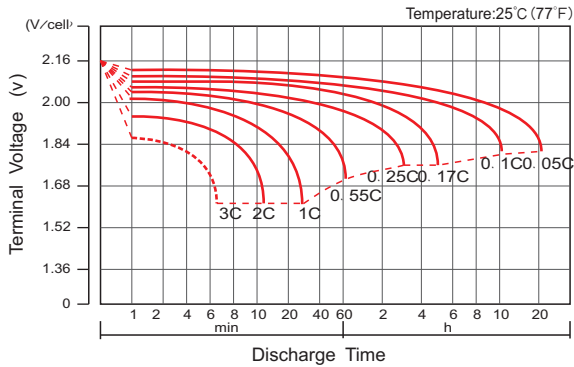
F.V/Time	10MIN	15MIN	30MIN	1HR	2HR	3HR	4HR	5HR	8HR	10HR	20HR
1.60V	528.1	426.9	266.5	153.9	92.5	72.2	57.0	48.7	33.2	27.8	14.6
1.65V	508.7	414.2	258.6	149.4	89.9	70.3	55.7	47.6	32.9	27.5	14.4
1.70V	476.9	393.8	249.6	145.5	87.5	68.6	54.4	46.6	32.4	27.1	14.2
1.75V	444.4	371.8	241.0	141.0	84.8	66.9	53.2	45.6	32.1	26.8	14.0
1.80V	409.3	348.1	232.7	136.4	82.2	65.1	51.8	44.5	31.6	26.5	13.9
1.85V	340.4	293.0	202.4	123.1	75.7	60.4	48.4	41.7	29.7	25.0	13.2

(Note) The above characteristics data are average values obtained within three charge/discharge cycle not the minimum values. The battery must be fully charged before the capacity test. The C₁₀ should reach 95% after the first cycle and 100% after the third cycle.

RA12-134(12V134Ah)



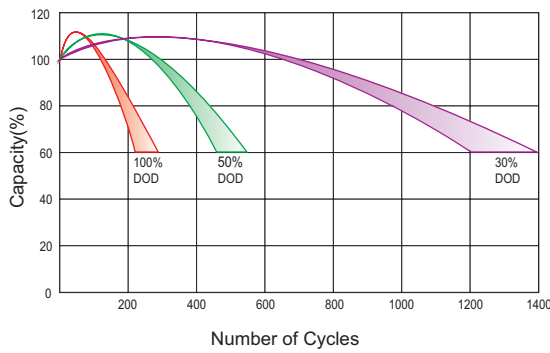
Discharge Characteristics Curve



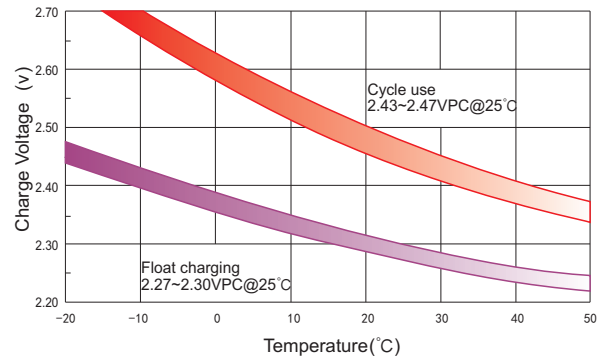
Charge Characteristic Curve For Standby Use



Cycle Life In Relation To Depth Of Discharge



Relationship Between Charging Voltage And Temperature



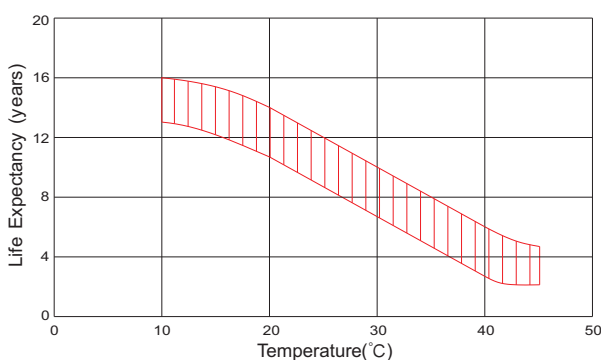
Temperature Effects On Capacity



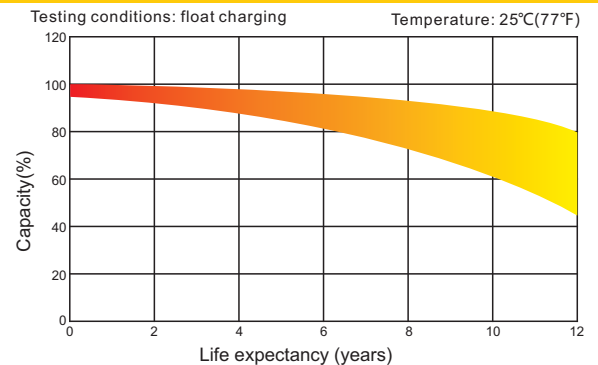
Storage Characteristics



Effect Of Temperature On Long Term Life



Life Characteristics Of Standby Use



(Note) All above information shall be changed without prior notice, Ritar reserves the right to explain and update the latest information.