



FOAMGLAS® T4+

Page: 1 Date: 28.06.2010 Supersedes: 0/0/0 www.foamglas.com



FOAMGLAS® T4+

Form of delivery (content per package)

length x width [mm]	600 x 450							
thickness [mm]	30	40	50	60	70	80	90	100
units	32*	12	10	8	7	6	6	5
square metre [m ²]	4.32	3.24	2.70	2.16	1.89	1.62	1.62	1.35

length x width [mm]	600 x 450							
thickness [mm]	110	120	130	140	150	160	170	180
units	5	4	4	4	3	3	3	3
square metre [m ²]	1.35	1.08	1.08	1.08	0.81	0.81	0.81	0.81

* Half slabs (300 x 450 mm).

Other dimensions and thicknesses are available on request.

1. General FOAMGLAS® characteristics

Description

: FOAMGLAS® is manufactured from specially graded recycled glass (> 66%) and natural raw materials which are available in abundant supply (sand, dolomite, lime...). The insulation is totally inorganic, contains no ozone depleting propellants (CFC's, HCFC's etc.), flame resistant additives or binders. Without VOC or other volatile substances.

Reaction to fire (EN 13501-1)

: Material complying with Euroclass A1, non-combustible, no toxic fumes

Service temperature limits

: from -260°C to +430°C

Water vapour resistance (EN ISO 10456)

: $\mu = \infty$

Hygroscopy

: zero

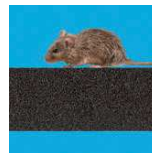
Capillarity

: zero

FOAMGLAS® characteristics



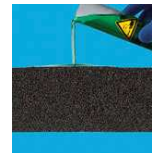
Waterproof



Resistant to attack



High compressive strength



Acid resistant / chemical resistant



Easy cut to shape



Non-combustible



Impervious to water vapour



Dimensionally stable



Ecological



FOAMGLAS® T4+

Page: 2

Date: 28.06.2010

Supersedes: 0/0/0

www.foamglas.com

2. Product characteristics according to EN 13167 ¹⁾

Density ($\pm 10\%$) (EN 1602)	: 115 kg/m ³
Thickness (EN 823) ± 2 mm	: from 30 to 180 mm
Length (EN 822) ± 2 mm	: 600 mm (half slabs 300 mm long also available)
Width (EN 822) ± 2 mm	: 450 mm oder 600 mm
Thermal conductivity (EN ISO 10456)	: $\lambda_D \leq 0.041$ W/(m·K)
Reaction to fire (EN 13501-1)	: Euroclass A1
Point load (EN 12430)	: PL ≤ 1.5 mm
Compressive strength (EN 826 annexe A)	: CS ≥ 600 kPa
Bending strength (EN 12089)	: BS ≥ 450 kPa
Tensile strength (EN 1607)	: TR ≥ 100 kPa

¹⁾ CE-marking ensures conformity with the mandatory essential requirements of CPD as mentioned in EN 13167; within the CEN Keymark certification all mentioned characteristics are certified by an empowered, notified and accredited 3rd party.

3. Additional material characteristics

Melting point (cf DIN 4102-17)	: >1000 °C
Coefficient of thermal expansion (EN 13471)	: 9×10^{-6} K ⁻¹
Specific heat (EN ISO 10456)	: 1 kJ/(kg·K)
Thermal diffusivity at 0°C	: 4.2×10^{-7} m ² /sec

4. Specific national product data