

elZinc Rainbow®

a new world of colors

elZinc® has developed a new pre-weathered range of colours under the brand elZinc Rainbow®.

elZinc Rainbow® is a rolled zinc-titanium, which meets the European standard EN988, manufactured from elZinc Slate® by applying mineral pigments. The 35µm organic coating provides additional anti-corrosion protection.

Its attractive, natural and warm tones give it great aesthetic value for both interior and exterior applications. Each shade in the range lends its own personality to a project, fitting in perfectly with its surroundings.

Main applications:

- Roofing
- Façades
- Interior decoration

Specific recommendations for the elZinc Rainbow® range:

- The temperature of the product must reach 10°C before it is folded or shaped.
- Use rolls or sheets from the same order for each project (because it is made using organic materials, elZinc Rainbow® can have slight variations in shade).
- Remove the protective film applied to each roll or sheet once the material is in place.
- Fold the material with an internal radius of 3x the thickness of the zinc.
- In order to adequately solder the material the surface must be mechanically stripped until the natural base zinc is visible.

For more information about the correct application of the range of elZinc® products, consult our technical manuals.

The elZinc Rainbow® range:

Four different finishes: **Red, Green, Blue & Black.**

Standard measurements:

Widths: 500, 600, 650, 670 y 1000 mm

Thickness: 0,7 mm

Formats:

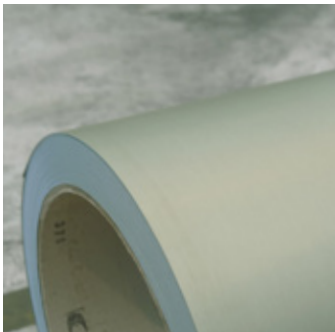
1000Kg coils

Fixed length 100kg coils (pallets of six rolls)

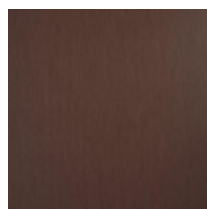
Sheets (2000x1000x0.7mm) in pallets of 200, 500 and 1000kg

The colour of elZinc Rainbow® has a half life of 30 years, its durability depends on the conditions where the product is installed.

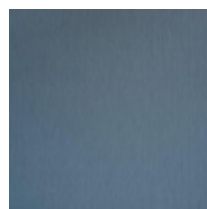
elZinc® does not guarantee the lifespan of the colour.



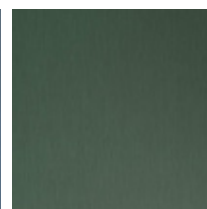
elZinc Rainbow®



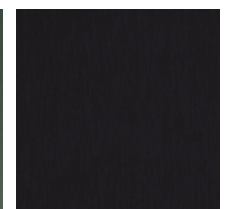
elZinc Rainbow® red



elZinc Rainbow® blue



elZinc Rainbow® green



elZinc Rainbow® black