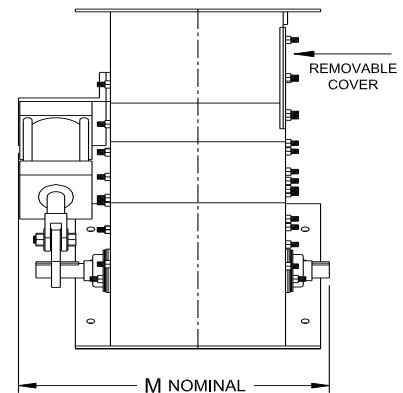
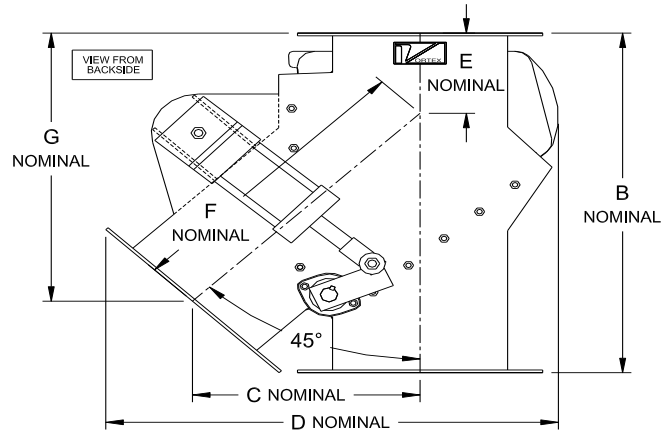


(H) Ø 7/16" (11mm) HOLES,
TYP (3) PLACES



2-Way SL 45	A		B		C		D		E		F		G		H		J		K		L		M		WEIGHT	
MODEL in(mm)	in	mm	in	mm	in	mm	in	mm	in	mm	in	mm	in	mm	in	mm	in	mm	in	mm	in	mm	in	mm	Lbs	Kg
Z04(100)-2XX-45-SL	4	102	15 1/4	387	8	203	15 1/8	384	4 1/2	114	11 3/8	289	12 3/8	314	8	8	8	203	6 1/4	159	3 1/8	79	12	305	50	23
Z06(150)-2XX-45-SL	6	152	18 1/4	464	9 3/4	248	18 1/4	464	4 1/2	114	13 3/4	349	14 3/4	375	8	8	10	254	8 1/4	210	4 1/8	105	13 3/4	349	65	30
Z08(200)-2XX-45-SL	8	203	21	533	11 1/2	292	22 1/8	562	5 1/4	133	16 1/4	413	16 3/4	425	12	12	12	305	10 1/4	260	3 1/2	89	15 3/4	400	75	34
Z10(250)-2XX-45-SL	10	254	23 1/2	597	13	330	25 7/8	657	5 1/2	140	18 3/8	467	18 1/2	470	12	12	14	356	12 1/4	311	4 1/2	114	17 3/4	451	110	50
Z12(300)-2XX-45-SL	12	305	26 1/4	667	14 3/4	375	29 3/8	746	5 7/8	149	20 7/8	530	20 5/8	524	20	20	16	406	14 1/4	362	2 3/4	70	19 3/4	502	130	59
Z14(350)-2XX-45-SL	14	356	29 1/4	743	16 1/2	419	31 7/8	810	6 1/4	159	23 3/8	594	22 7/8	581	20	20	18	457	16 1/4	413	3 1/4	83	24	610	180	82
Z16(400)-2XX-45-SL	16	406	32 3/4	832	18 1/2	470	36 7/8	937	7 1/8	181	26 1/8	664	25 5/8	651	20	20	20	508	18 1/4	464	3 3/4	95	26	660	220	100
Z18(450)-2XX-45-SL	18	457	36	914	20 1/2	521	41 1/2	1054	7 3/4	197	29	737	28 1/4	718	20	20	22	559	20 1/4	514	4 1/4	108	28	711	260	118
Z20(500)-2XX-45-SL	20	508	39 1/2	1003	22 1/2	572	45 7/8	1165	8 1/2	216	31 7/8	810	31	787	28	28	24	610	22 1/4	565	3	76	30	762	300	136
Z22(550)-2XX-45-SL	22	559	43	1092	24 1/2	622	49 1/4	1251	9 3/8	238	34 5/8	879	33 7/8	860	28	28	26	660	24 1/4	616	3 1/2	89	32	813	350	159
Z24(600)-2XX-45-SL	24	610	46 1/2	1181	27	686	53 3/8	1356	9 1/4	235	38 1/8	968	36 1/4	921	28	28	29	737	26 1/4	667	3 3/4	95	36 1/2	927	500	227
Z26(650)-2XX-45-SL	26	660	50	1270	29	737	58 3/8	1483	10	254	41	1041	39	991	28	28	31	787	28 1/4	718	4 1/8	105	38 1/2	978	700	318
Z28(700)-2XX-45-SL	28	711	53	1346	31	787	62 1/8	1578	10 3/8	264	43 7/8	1114	41 3/8	1051	28	28	33	838	30 1/4	768	4 1/4	108	40.5	1029	900	409
Z30(750)-2XX-45-SL	30	762	54	1372	31 7/8	810	64 5/8	1641	9 7/8	251	45 1/8	1146	42 1/8	1070	36	36	35	889	32 1/4	819	3 5/8	92	42 1/2	1080	1100	499

*Information subject to change without notice | Above information is Vortex standard dimensional information | Contact us if your application needs a non-standard valve | Available specifications and modifications available at www.vortexvalves.com