
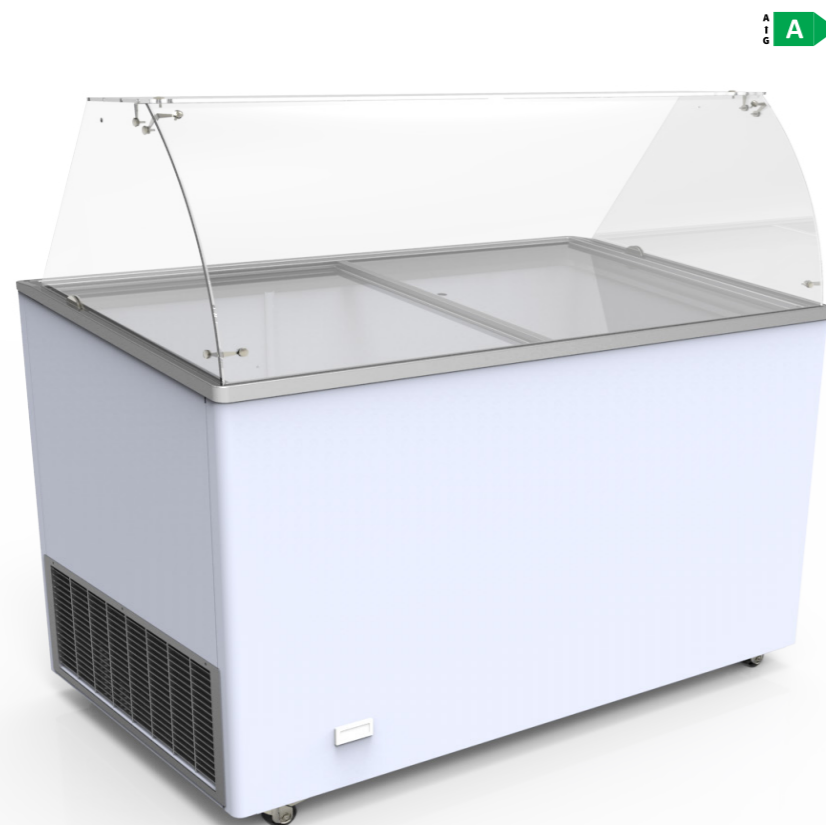


Scoop ice cream vitrine



-16/-24°C 



✓ Storage door



✓ Straight glass

VENUS VITRINE 56
1654 x 687 x 1229
14 places



Advantages

- Ideal for promoting scoop ice cream
- Selected by leading companies in the ice cream sector.
- Large storage space with a separate door
- Competitive price
- Large display area optimum product promotion
- Optimum product visibility
- Robust for heavy duty use
- Plug ready



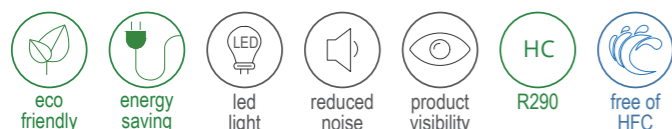
Basic Equipment

- Hi efficiency compressor
- Storage space with a separate door (except VV 26)
- Basket system for 5lt ice cream containers
- 4 castors
- Thermometer
- Led Lighting
- Mechanical Thermostat
- Air cooled condenser
- Drainage
- Internal body from non toxic steel sheet



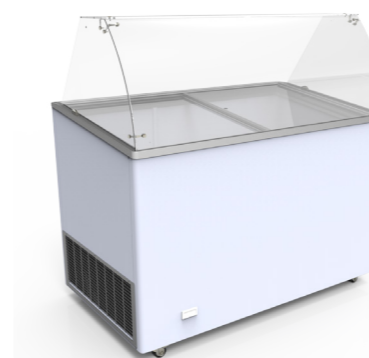
Optional Equipment

- Led internal lighting
- Stainless sockets for stainless steel ice cream basins
- Straight glass
- Digital controller
- Maintenance free condenser
- EBD electronic fan motor (compressor)
- Branding

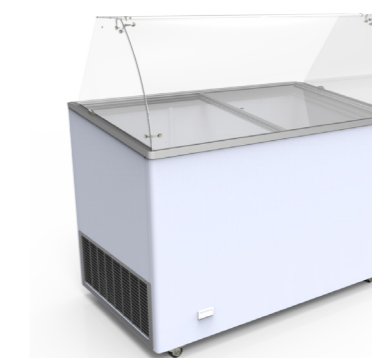


Models

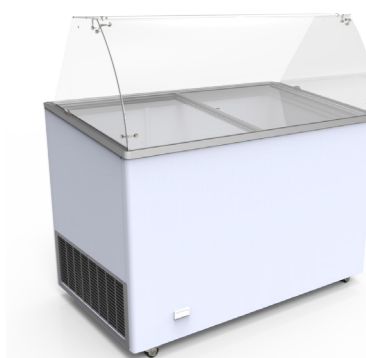
VENUS VITRINE 26 • VENUS VITRINE 36 • VENUS VITRINE 46 • VENUS VITRINE 56



VENUS VITRINE 26
909 x 684 x 1229
6 places



VENUS VITRINE 36
1184 x 687 x 1229
10 places



VENUS VITRINE 46
1439 x 684 x 1229
12 places



Technical Specifications

TECHNICAL SPECIFICATIONS	UNITS	VITRINE 26	VITRINE 36	VITRINE 46	VITRINE 56
External dimensions (lxwxh)	mm	909 x 684 x 1229	1184 x 687 x 1229	1439 x 684 x 1229	1654 x 687 x 1229
Internal dimensions (lxwxh)	mm	785 x 560 x 688	1060 x 560 x 688	1315 x 560 x 688	1530 x 560 x 688
Packing dimensions (lxwxh)	mm	945 x 770 x 912	1220 x 770 x 912	1475 x 770 x 912	1690 x 770 x 912
Internal gross volume	lt	231	330	454	498
Temperature range	°C	-16 /-24	-16 /-24	-16 /-24	-16 /-24
Places for plastic basins 36x15.5 cm	-	6	10	12	14
Climate class	-	7G3/L1	7G3/L1	7G3/L1	7G3/L1
Gross / net weight	kg	71 / 61	85 / 74	101 / 89	110 / 97
Pieces per truck 13.6m	-	36 / 72	26 / 56	20 / 48	20 / 42
Pieces per 20/40'ft container	-	92	66	54	48
Refrigeration	-	STATIC	STATIC	STATIC	STATIC
Refrigerant	-	R290	R290	R290	R290

*The energy consumption concerns specific metrics