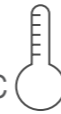


# EKTOR SGL

Horizontal display freezer with straight glass



-18/-26 °C 

A C



**EKTOR 36 SGL**  
1184 x 644 x 895  
356lt



## Advantages

- Ideal for small places (EKTOR 16 , 26)
- Ideal for promoting frozen products
- Selected by leading companies in the ice cream sector
- Ideal for heavy duty and outdoors use
- Reliable and functional
- Optimum product visibility
- Plug-ready



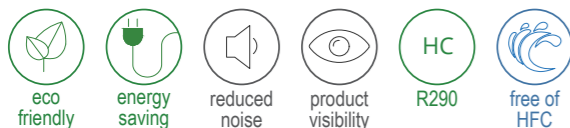
## Basic Equipment

- Hi efficiency compressor
- Thermometer
- Four castors
- Mechanical thermostat
- Lock
- Drainage
- Air cooled condenser
- Internal body from non toxic pre-painted steel sheet



## Optional Equipment

- Divider
- Basket for frozen food
- Baskets for ice cream
- Internal LED lighting
- Canopy holder
- Digital controller
- Maintenance free condenser
- Castors with brake
- EBD electronic fan motor (compressor)
- Branding



## Models

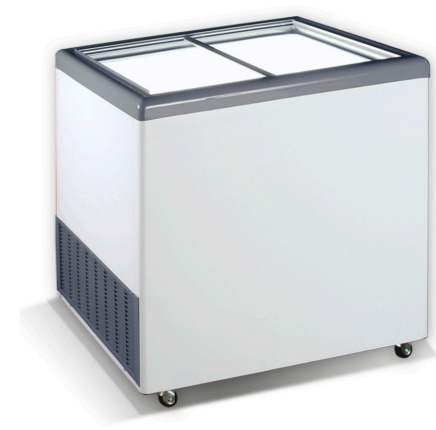
EKTOR 16 SGL • EKTOR 26 SGL • EKTOR 36 SGL

A C



**EKTOR 16 SGL**  
654 x 644 x 899  
172lt

A D



**EKTOR 26 SGL**  
905 x 644 x 895  
251lt



## Technical Specifications

TECHNICAL SPECIFICATIONS	UNITS	EKTOR 16 SGL	EKTOR 26 SGL	EKTOR 36 SGL
External dimensions (lxwxh)	mm	654 x 644 x 899	905 x 644 x 895	1184 x 644 x 895
Internal dimensions (lxwxh)	mm	530 x 520 x 741	785 x 520 x 737	1060 x 520 x 737
Packing dimensions (lxwxh)	mm	695 x 740 x 912	945 x 740 x 912	1230 x 740 x 912
Internal gross volume	lt	172	251	356
Number of baskets**	pcs	2	3	4
Baskets for ice-cream / flavors**	pcs	1/4	2/6	3/9
Temperature range	°C	-18 / -26	-18 / -26	-18 / -26
Gross / net weight	kg	48 / 40	57 / 48	68 / 58
Climate class	-	BC1/CC1	BC1/CC1	BC1/CC1
Pieces per truck 13.6m	-	114	92	72
Pieces per 20/40'ft container	-	48/102	36/72	26/56
Refrigeration	-	STATIC	STATIC	STATIC
Refrigerant	-	R290	R290	R290

\*The energy consumption concerns specific metrics

\*\*The baskets are optional equipment