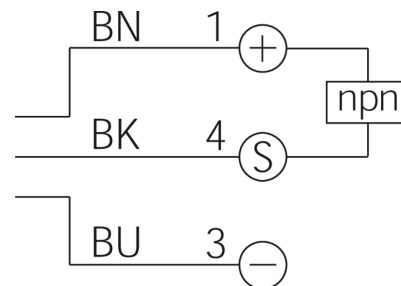
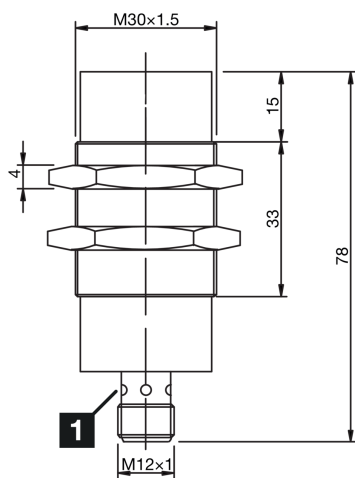
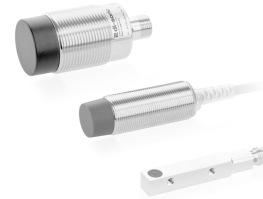




213160
INS-M30-N15NS-B3
Inductive proximity sensor

- Single switching distance
- Metal connector M12
- Short-circuit protection
- LED switching status display
- High protection type



1) LED

BK: black

BN: brown

BU: blue

Function



Technical data (typ.)

+20°C, 24 V DC

| | |
|------------------------------|--|
| Service voltage | 10 ... 30 V DC |
| Internal power consumption | 10 mA |
| Insulation voltage endurance | < 500 V DC |
| Installation type | non-flush |
| Thread | M30 x 1,5 |
| Housing length | 78 mm |
| Housing material | Brass (nickel-plated) |
| Protection class | III, operation on protective low voltage |
| Operating principle | inductive |
| Evaluation | digital |
| Design | Thread |
| Characteristics | Single switching distance |
| Product series | INS-100 Standard |
| Switching output | npn, 200 mA, NO |
| Voltage drop (max.) | 1,5 V DC |
| Switching distance (SN) | 15 mm |
| Standardized measuring plate | 45 x 45 x 1 mm |
| Switching hysteresis (max.) | < 10 % |
| LED Anzeige | Yes |
| Switching frequency | 240 Hz |



213160
INS-M30-N15NS-B3
Inductive proximity sensor

Technical data (typ.)**+20°C, 24 V DC**

Ambient temperature during operation

-25 ... +70 °C

Protection type

IP 67

Connection

Connector, M12, 3-pin

More information / accessories<https://www.di-soric.com/213160>