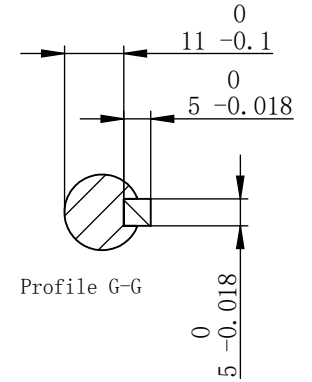
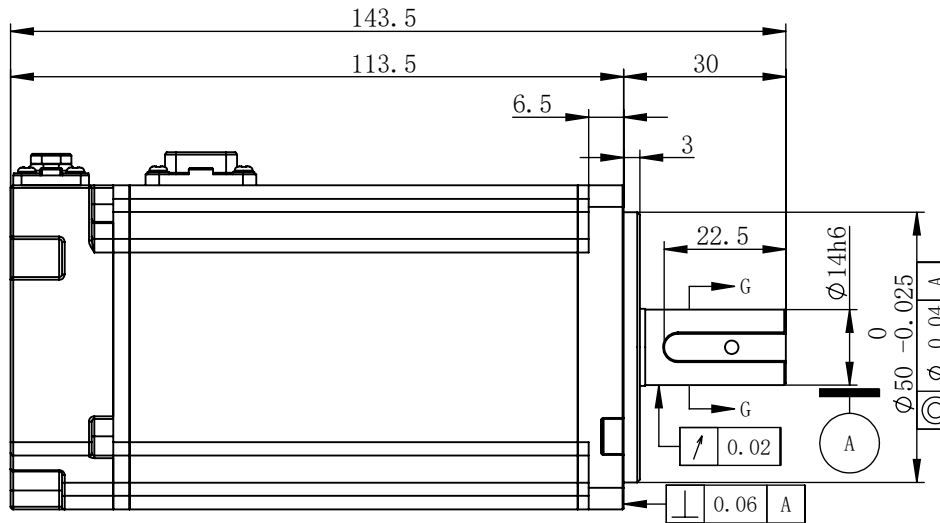
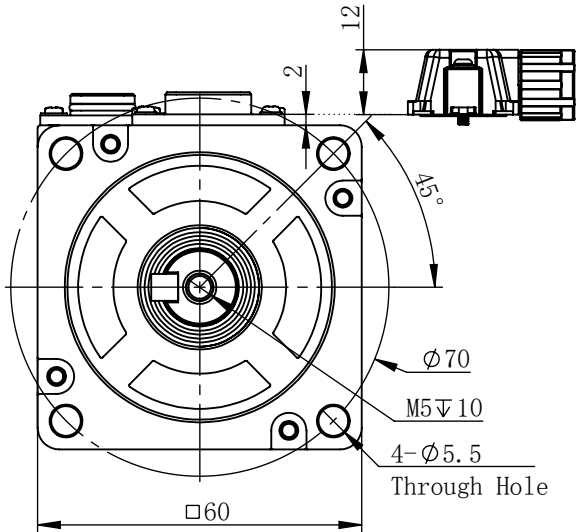


Servo motor specification

| | |
|-----------------------|--|
| Inspection controlled | |
| Controlled Date | |

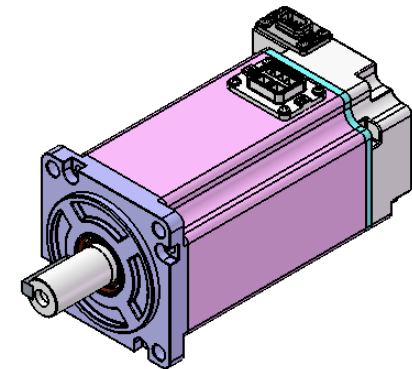
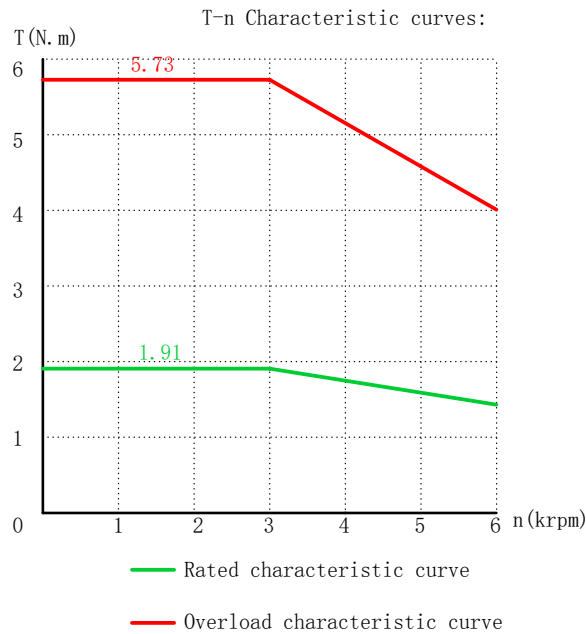
Unannotated technical requirements according to the following implementation:
 1. Unannotated dimensional tolerance according to GB1804-m;
 2. Unannotated form tolerance according to GB1184-k;



| | | | | |
|------------|-----------------|------|-------|--------------|
| Connector | SC-MC6P-AC2G-H5 | | | |
| Pin number | 1 | 2 | 3 | 4 |
| Signal | U | V | W | PE |
| Color | Red | Blue | Black | Yellow/green |

| | | | | | | | |
|------------|-----------------|-------|-------|-------|------|--------|--------|
| Connector | SC-MC7P-A60G-08 | | | | | | |
| Pin number | 1 | 2 | 3 | 4 | 5 | 6 | 7 |
| Signal | 5V | 0V | BAT+ | BAT- | SD+ | SD- | PE |
| Color | Red | Black | Brown | White | Blue | Yellow | Shield |

| Motor technical specifications | | | | | |
|--------------------------------|------|--------------------------------------|---------------------|---------------------------------|-------|
| Name | Data | Unit | Name | Data | Unit |
| Rated power | 600 | W | Rated voltage | 220 | V |
| Rated speed | 3000 | rpm | Maximum speed | 5000 | rpm |
| Rated current | 3.3 | A rms | Peak current | 9.9 | A rms |
| Rated torque | 1.91 | N.m | Peak torque | 5.73 | N.m |
| Rotor inertia | 0.51 | Kg.m ² × 10 ⁻⁴ | Feedback Components | 23bit multi-turn absolute value | |



| | | |
|----------------------------------|----------|----------|
| Suzhou VEICHI ELECTRIC CO.,LTD. | View: | |
| Material name: servo motor | Design: | |
| Material Code: 9120122363 | Date: | 21-08-23 |
| Specification: V7E-L06A-R6030-D1 | Version: | A0 |