

## Yottacontrol A-18 series Ethernet IO module Quick Start

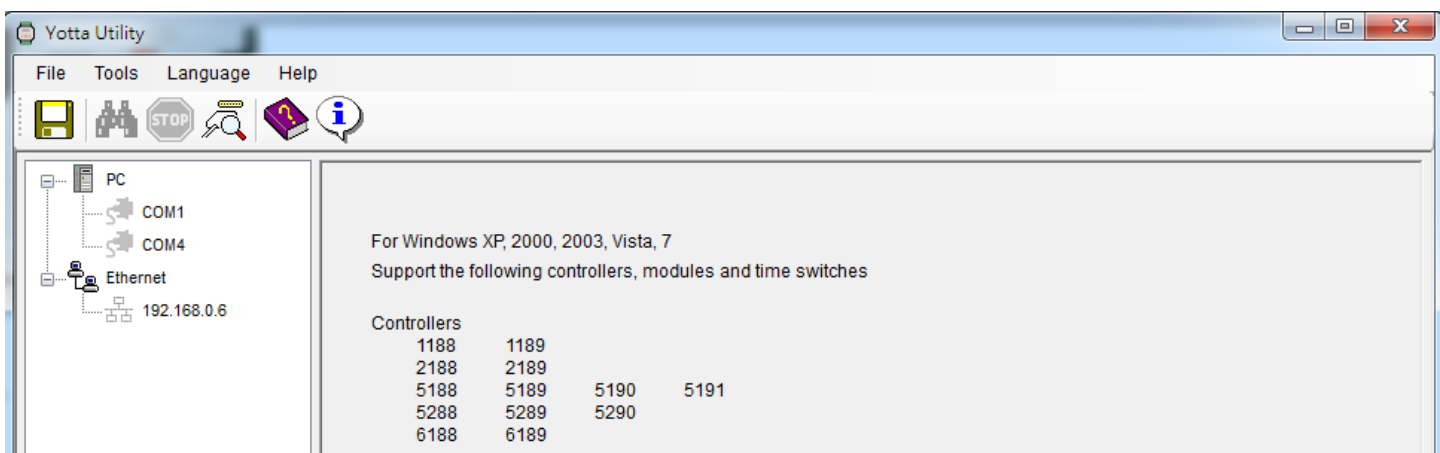
Yottacontrol A-18 series Ethernet IO module had 2 protocols to setup the parameter.


1. Over the USB port.
2. Over the Ethernet port.



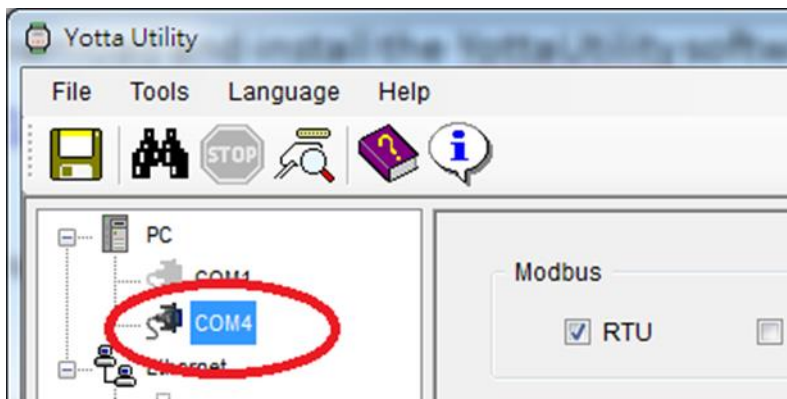
Before the regular use, must finish the related setup process. And prepare below items to finish the setup.

1. Download and install the USB driver from below web link.  
[http://www.yottacontrol.com/download/A5X\\_USB\\_DRIVER.rar](http://www.yottacontrol.com/download/A5X_USB_DRIVER.rar)
2. Download and install the YottaUtility software from below web link.  
[http://www.yottacontrol.com/download/YOTTA\\_UTY.rar](http://www.yottacontrol.com/download/YOTTA_UTY.rar)
3. Power on the A-18xx and turn the back switch to Init mode. Over the USB or Ethernet to link A-18xx and PC. (Ethernet initial IP 192.168.1.1)
4. Open the YottaUtility software.

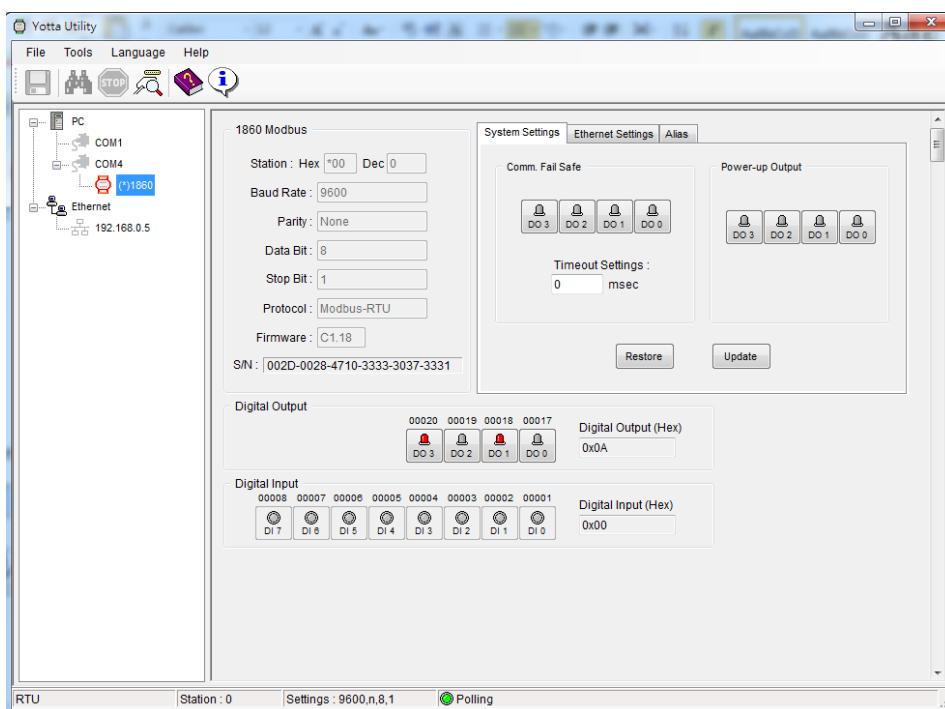


5. Click the  to refresh the COM port.

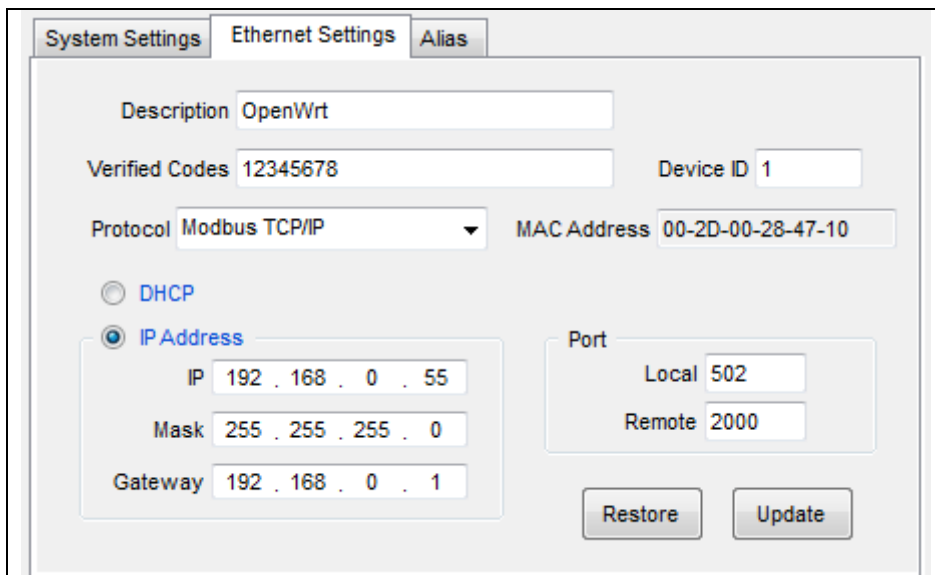
6. Click the related COM port.



7. Click the  to search module.



8.



Ethernet Settings menu can setup below parameter:  
 Description: Device name  
 Verified Codes: password verified  
 Device ID: 1-255  
 IP: assign IP address  
 When complete above parameter setting, click Update

System Settings Ethernet Settings Alias

Digital Output

DO3 Tower DO2 Fan DO1 Motor DO0 Alarm

Digital Input

DI3 Sensor4 DI2 Sensor3 DI1 Sensor2 DI0 Sensor1

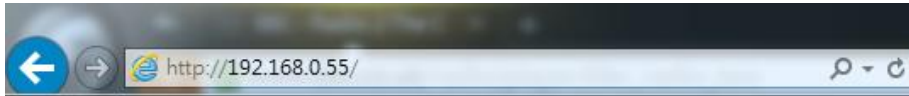
DI7 DI6 DI5 Sensor6 DI4 Sensor5

Restore Update

9. Alias menu can define Input/Output name, when complete define click Update.
10. Can setup the related parameter from above photo. When finish the setup, must turn the switch to Normal mode and re-power on the device.
11. Done.

**WEB Browser online monitor and control**

1. Turn the A-18 series Ethernet IO module's switch to Normal mode and power on, over the Ethernet to link PC (note, maybe need the Router or HUB to meet this operation). Open the web browser and type in the device IP address.

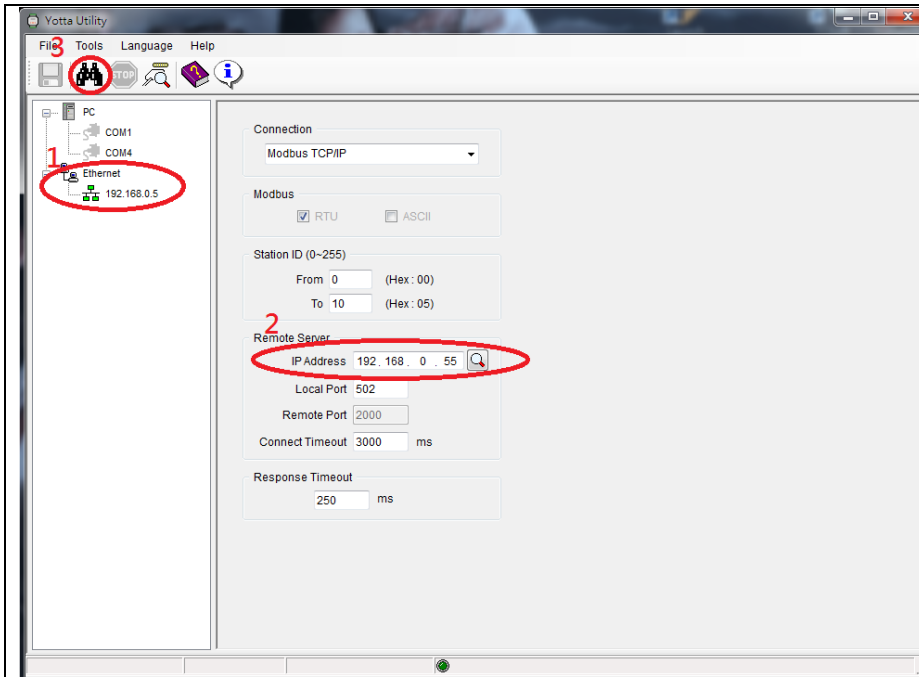


When finish the IP address type in the IP address, the web browser will show below graph.

Title:	<input type="text" value="OpenWrt"/>	<p>The left graph will show the device's real time status, involve the device name, Input/Output status. 0 is mean OFF, 1 is mean ON.</p> <p>Also can modify the DO status on the web browser, when finish the modify please type in the Verify Code and click Apply to finish above operation.</p>
FW:	<input type="text" value="1.18"/>	
MAC:	<input type="text" value="00:2D:00:28:47:10"/>	
IP :	<input type="text" value="192.168.0.55"/>	
Subnet:	<input type="text" value="255.255.255.0"/>	
Gateway:	<input type="text" value="192.168.0.1"/>	
DI-0:	<input type="text" value="Sensor1"/> <input type="checkbox" value="0"/>	
DI-1:	<input type="text" value="Sensor2"/> <input type="checkbox" value="0"/>	
DI-2:	<input type="text" value="Sensor3"/> <input type="checkbox" value="0"/>	
DI-3:	<input type="text" value="Sensor4"/> <input type="checkbox" value="0"/>	
DI-4:	<input type="text" value="Sensor5"/> <input type="checkbox" value="0"/>	
DI-5:	<input type="text" value="Sensor6"/> <input type="checkbox" value="0"/>	
DI-6:	<input type="text" value=""/> <input type="checkbox" value="0"/>	
DI-7:	<input type="text" value=""/> <input type="checkbox" value="0"/>	
DO-0:	<input type="text" value="Alarm"/> <input type="checkbox" value="0"/>	
DO-1:	<input type="text" value="Motor"/> <input type="checkbox" value="0"/>	
DO-2:	<input type="text" value="Fan"/> <input type="checkbox" value="0"/>	
DO-3:	<input type="text" value="Tower"/> <input type="checkbox" value="0"/>	
Verified Code:	<input type="text" value="*****"/>	
<input type="button" value="Apply"/>		
<p>[1:Digital I/O signal status 'High' (On)] [0:Digital I/O signal status 'Low' (Off)]</p> <p>©Copyright 2016</p>		

### YottaUtility online monitor and control


1. Turn the A-18 series Ethernet IO module's switch to Normal mode and power on, over the Ethernet to link PC (note, maybe need the Router or HUB to meet this operation). Open the YottaUtility.



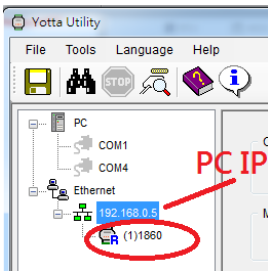
Follow below step to finish the A-18 series Ethernet IO module setup:

1. Click Ethernet
2. Type in IP address



3. Click  to search device

2. When finish the device search, the YottaUtility will show below graph, click the device type directly.



3. When click the device type, the YottaUtility will show device's IO status. The user can click DO to modify the output status.

