

# Plastic and Cosmetic Surgery



The Lipo Cart is a complete and powerful Liposuction cart for tumescent assisted liposuction.

The Lipo Cart unites all high-quality equipment with simple and easy operation at highest flexibility.

**Power Liposuction**

**Infiltration**

**Vacuum**

# Lipo Cart

## Complete Liposuction system

The Lipo Cart represents our fine solution as a complete power assisted system for Liposuction.

Our product portfolio for liposuction features a power assisted device that is easier for surgeons to control, allowing more precise and thorough fat removal. Nouvag's LipoSurg produces rapid, small reciprocating vibrations to break up fat, so that it can easily be sucked out through the cannula.

Surgeons can remove more fat in a shorter period of time, which leads to enhanced results, a safer procedure, and faster recovery. Liposuction is performed using the tumescent liposuction technique, in which a liquid solution is delivered to create an effect of fat tunneling, and so enables easier fat transfer through the cannula and out of the body. The infiltration of an anesthetic substance into the treatment area is done by the LipoSurg integrated sophisticated infiltration system.

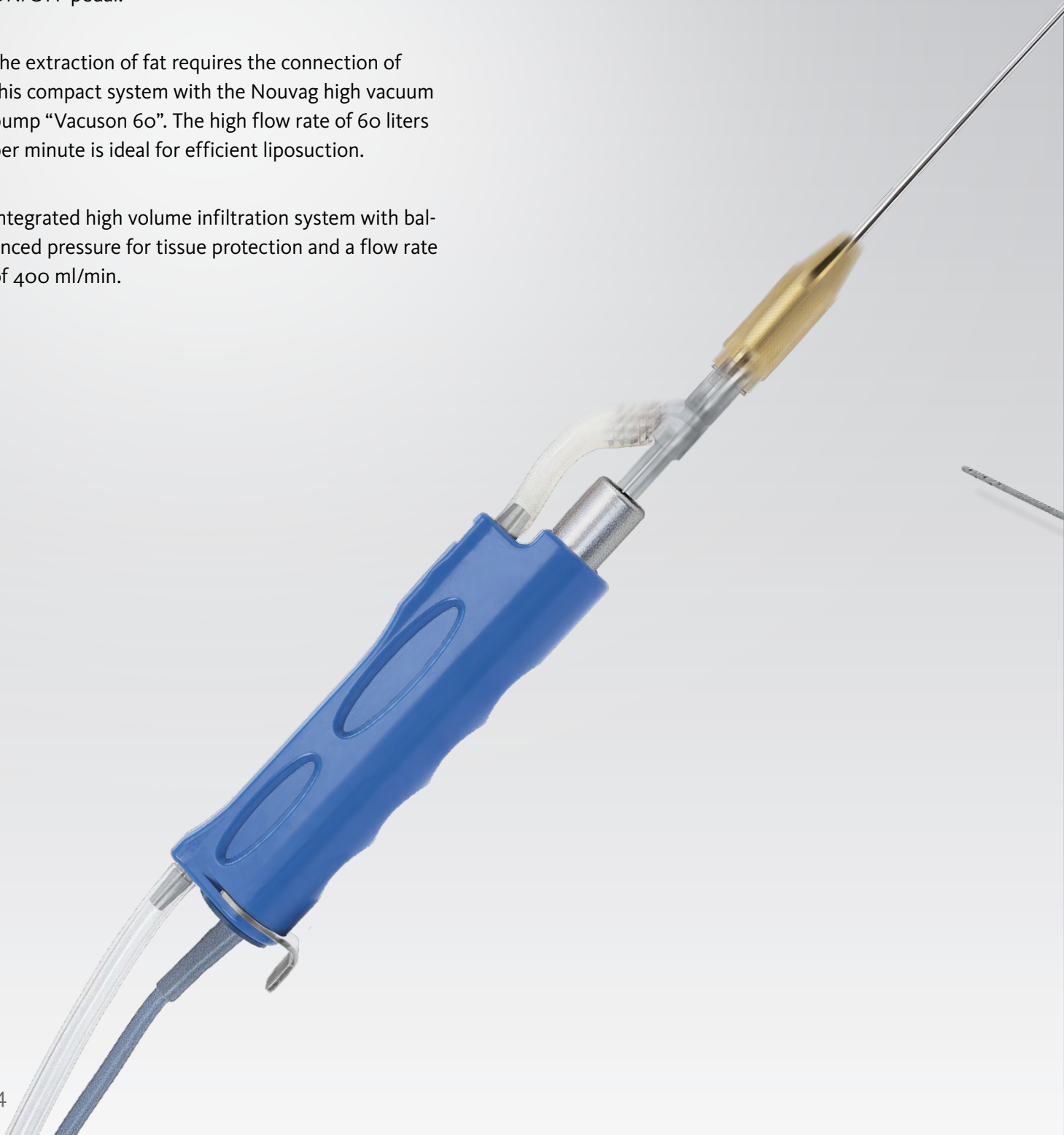
# LipoSurg

## Vibration liposuction with tumescent infiltration

The LipoSurg system combines the functions of infiltration and motor-assisted vibration liposuction into a single, compact device. The desired values for infiltration and liposuction are set by selecting the function and pressing the ascending or descending arrow keys. Once the values are set, the liposuction or infiltration can be controlled by the VARIO or the ON/OFF pedal.

The extraction of fat requires the connection of this compact system with the Nouvag high vacuum pump "Vacuson 60". The high flow rate of 60 liters per minute is ideal for efficient liposuction.

Integrated high volume infiltration system with balanced pressure for tissue protection and a flow rate of 400 ml/min.



# Lipo Surg



400 ml/min infiltration

up to 4200 strokes

Power Liposuction

## Vacuson 60

### High performance vacuum pump, ideal for liposuction

The suction capacity of 60 liters per minute predestines this pump for the liposuction environment. Large volumes of fat can be removed in a short time.

Depending on the requirement, two 2 liter secretion bottles or two 5 liter secretion bottles can each be hung on the bottle holders of the Vacuson 60 or the VEXIO Cart device trolley. With the MONOKIT system, it is also possible to work with disposable pouches and thus reduce the cleaning and reprocessing effort.



*REF 4237, Vacuson 60 with pedal*

- 115 V version
- 230 V version

**60 l/min**

# VEXIO Cart "Profi"

## Complete, safe, flexible

This robust and easy maneuverable device cart is the base for an uncomplicated, man and machine friendly accomodation of your device combination.

At the place of use, the VEXIO Cart is connected to the grid. As a result, all devices on the cart are ready for use immediately. The cables of the devices used disappear in the built in cable channel.

**Integrated power supply with 3 sockets for maximum maneuverability**

**Antistatic, individually lockable rollers ensure high security**

**Cable ducts in the center column ensure order and contribute to safe handling**

*REF 1898: VEXIO Cart "Profi"*

*REF 1894: Bottle holder is optional*



# Dispenser DP30 LipoPlus

## Tumescent infiltration

400 ml/min

The infiltration of tumescent liquid into the adipose tissue is especially gentle and efficient with the Dispenser DP30 LipoPlus.

The peristaltic pump is designed for a maximum output of 400 milliliters per minute. With its simple rotary knob, for setting the maximum flow rate, the device is also very easy to use. The infiltration is set in motion by the pedal.

Inserting the tubing set is done effortlessly and quickly thanks to the well visible, wide-opening, swivel arm of the tube holder bracket.

# LIPOL PLUS





REF 4163: Dispenser DP30 LipoPlus with VARIO pedal


REF 4161: Dispenser DP30 LipoPlus with on/off pedal

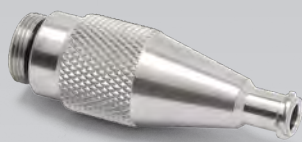


# Instruments for infiltration

Infiltration needles	Needle-Ø mm	Needle length mm	REF
	0.9	70	4561
	1.0	120	4562

Infiltration cannula with conventional screwing connection	Cannula-Ø mm	Length mm	REF
	3.0	250	4350

Infiltration cannulas with Luer Lock connection	Cannula-Ø mm	Length mm	REF
	2.0	150	4313



**REF 4398:** Luer Lock adapter for connecting infiltration cannulas and tubing sets with Luer Lock connection.

**REF 4313:** Infiltration cannula with Luer Lock connection.

**REF 4314:** Handle for connecting infiltration cannulas with Luer-Lock connection.



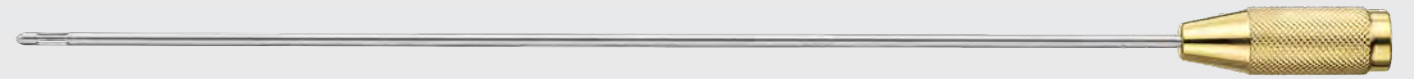
# Liposuction cannulas

High quality finished, cell friendly soft tissue cannulas from non-aggressive sculpting and extraction up to aggressive cannulas for large extraction volume. Especially designed cannulas for the use of tumescent local anesthesia power liposuction technique.



	Cannula-Ø, mm	Length mm	No. of holes	Hole-Ø mm	REF
<b>Straight Entner cannulas</b> for abdominal surgery	1.5	150	1	oval	4361
	2.0	150	1	oval	4364
	2.0	150	18	1.0	4373
	3.0	150	18	1.5	4374
	3.0	200	22	1.5	4378
	3.0	300	30	1.5	4387
	4.0	200	22	2.0	4379
	4.0	300	30	1.5	4388
<b>Curved cannulas</b> for facial and neck liposuction	3.0	200	22	1.5	4381
<b>Bayonet cannulas</b> for thigh and lower leg liposuction	3.0	200	22	1.5	4362
	3.0	300	30	1.5	4365
	4.0	200	22	1.5	4368
	4.0	300	30	1.5	4372

	Cannula-Ø mm	Length mm	REF
<b>Mercedes</b> most popular for extraction	3.0	150	4487
	3.0	250	4488
	4.0	150	4489
	4.0	250	4490
<b>Toledo</b>	2.0	50	4595
	3.0	150	4596
	4.0	250	4597
	5.0	300	4598
<b>One central, two lateral</b>	3.0	200	4480
	3.0	300	4481
	4.0	300	4482
	5.0	300	4483
	6.0	300	4484
<b>One lateral</b>	2.0	150	4364
	3.0	200	4485
	3.0	300	4486



## Autologous fat transfer

An autologous fat transfer has many applications in plastic and aesthetic surgery. The autologous fat cells of the patient are harvested by gentle liposuction. It is crucial that no damage occurs to the delicate fat cells during the

harvesting and transplanting process. Therefore highly quality precision Instrumentation in combination with a dedicated powered liposuction unit is absolutely vital.



**REF 4491:** Liposuction cannula for the harvesting of autologous fat cells. 15 cm length, Ø 2,5 mm, 4 perforations, with Luer-Lock connection.



**REF 4498:** Liposuction cannula for harvesting of autologous fat cells. 18 cm length, Ø 3 mm, sharp perforations, with Luer-Lock connection.

# Accessories



Reusable suction bottle system, completely sterilizable	REF
5 liter polysulfone secretion jar with scale	4245
2 liter polysulfone secretion jar with scale	4052
Bottle lid with overflow protection system for 2 and 5 liter jars	4058



**REF 4043:** Quiver, 30 cm, with connection module

**REF 4044:** Quiver, 40 cm, with connection module



REF: 4030, MONOKIT secretion jar system, complete	REF
MONOKIT single use inlay pouches, packaging unit of 50 pieces	4035
MONOKIT container bottle for inlay pouches, sterilizable	4036
MONOKIT bottle bracket	4037



**REF 4130:** Two way tap to switch between the two secretion jars, including connecting tube 8 x 3 x 400 mm



**REF 4390:** Liposuction handle for conventional cannulas.



**REF 4391:** Liposuction handle with vent for conventional cannulas.



**REF 28557:** Adapter for mounting Luer Lock cannulas onto the Conform Cannula Handpiece.

Further accessories	REF
Hydrophobic single use bacteria filter for Vacuson 6o.	4246
Tube set for the suction of the secretion liquids; 4 m sterile	6026E
Tube set for the infiltration of tumescent liquid, 4 m, sterile	6022



## Technical data

### LipoSurg: REF 3392

Voltage	switchable: 100 V~/ 115 V~/ 230 V~, 50–60 Hz
Nominal voltage	120 VA
Applied part	Type BF
Max. Torque	6 Ncm
Dimensions (W x H x D)	260 x 250 x 110 mm
Weight	3.4 kg
Pedal IP Code	IPX8

### Conform Cannula Handpiece: REF 5077nou

Vibration frequencies	2700, 3000, 3300, 3600, 4200 strokes/min
Cannula stroke	2 mm
Weight	210 g (without attached electronic motor)

### Dispenser DP30 LipoPlus: REF 4161/4163

Voltage	switchable: 100 V~/ 115 V~/ 230 V~, 50–60 Hz
Conveying performance	max. 400 ml/min
Max. Pressure	2.0 bar (with closed tube)
Dimensions (W x H x D)	260 x 250 x 110 mm
Weight	3.4 kg

### Vacuson 60: REF 4237

Max. Negative pressure	– 0,9 bar / 675 mmHG
Suction performance	60 l/min
Dimensions (W x H x D)	360 x 300 x 280 mm
Weight	12 kg

### VEXIO Cart: REF 1898, Bottle holder tripod REF 1894

Load capacity	65 kg
Elektric box	Connector strip with device connections
Footprint	530 x 610 mm
Total height	1320 mm
Tray footprint	400 x 384 mm
Load capacity, tripod	4 x 2 kg (4 arms)

Leaflet may represent products that are not available in all markets.



**Nouvag AG**  
St.Gallerstr. 23–25  
CH-9403 Goldach

Tel +41 (0)71 846 66 00

info@nouvag.com  
www.nouvag.com



**Nouvag GmbH**  
Schulthaißstr. 15  
D-78462 Konstanz

Tel +49 (0)7531 1290-0  
Fax +49 (0)7531 1290-12

info-de@nouvag.com  
www.nouvag.com



**Nouvag USA, LLC**  
6201 Airport Freeway, Suite 200  
USA-76117 Haltom City, Texas

Tel +1 817 887-9814  
Fax +1 817 887-9817

Toll free number (800) 673 7427  
www.nouvagusa.com