

#whsterilization



video.wh.com

Now at
your dealer
or **wh.com**



New Lina sterilizer

the power of efficiency

Usability outside
Technology inside



lina

B type sterilizer, yet brilliant

B type sterilizer for best performance.

To prevent the transmission of infections, steam sterilization plays a significant role in the reprocessing of dental instruments. Thereby, efficiency and simplicity are crucial. The new generation of Lina sterilizers meet all these requirements and more: simple operation, ergonomic and functional design, appropriate sterilization cycles and upgradeable functions guarantee high efficiency leading to maximum results.



Interrupting the chain of infection.
B type sterilizer – for peace
of mind on reprocessing and
infection prevention.

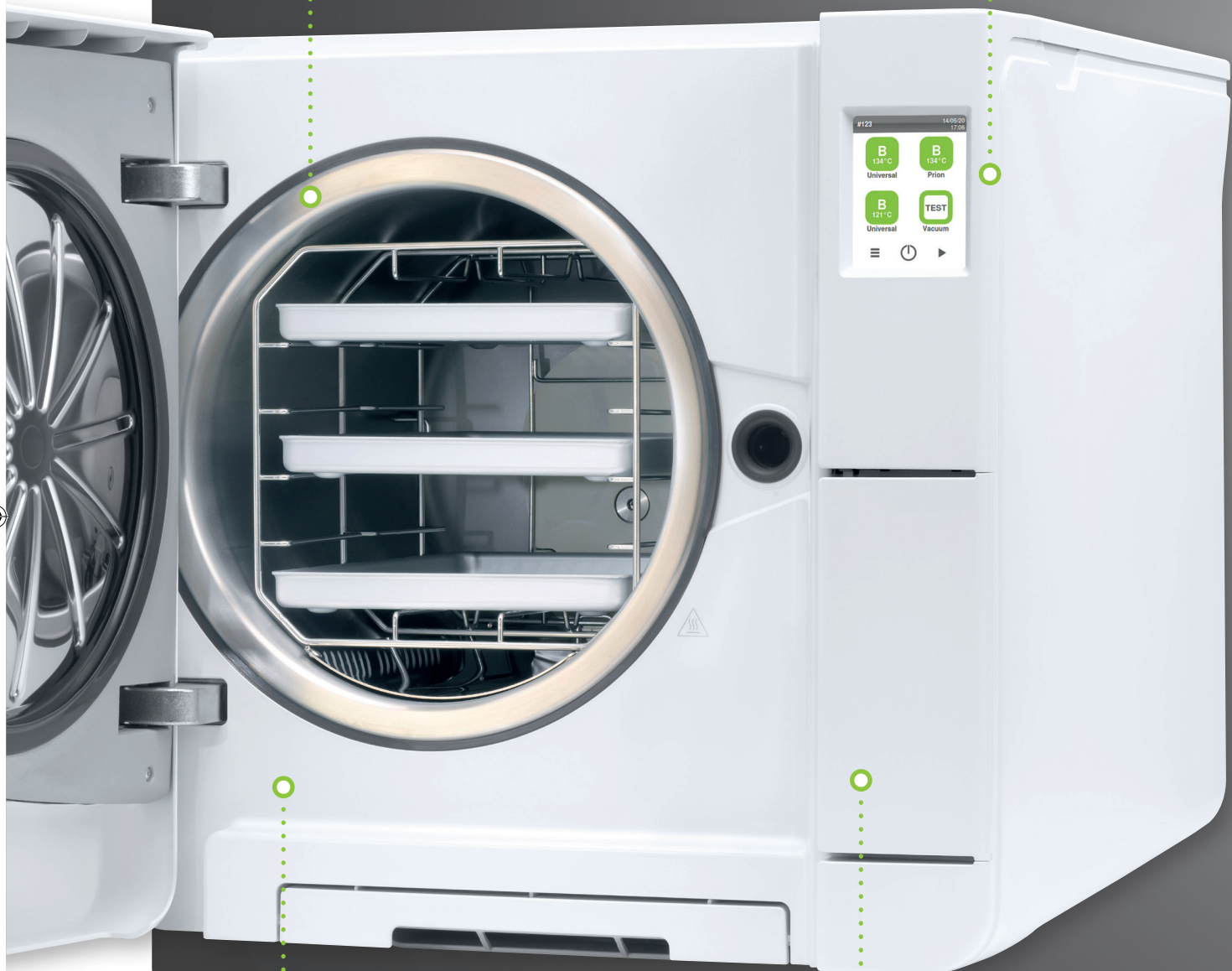


B type sterilizer

with the best cycle times of its category.

Ease of use

for an unrivalled smooth user experience.



Unique upgradeability

for customising and modernising the device according to your needs.

Advanced traceability

for complete documentation.

A close-up photograph of a Lina sterilizer's control panel. The panel is light gray with a prominent, dark, cylindrical push-button. To the right, a large, dark, circular door is visible, featuring three horizontal metallic handles. The background is a soft, out-of-focus light gray.

Improved components **Simplified work processes**

Usability outside.

The Lina sterilizer is characterised by an effortless handling, ergonomic and functional design. Ideal to simplify the sterilization process and thus to ensure an efficient workflow in your practice.

The risk of infection is **actively minimised by sterilization!**

Because it's all about the safety of your patients, your staff and yourself.

How may you benefit from the **improved usability**?



Ease of use

- › The 3.5'' touch screen display enables smooth operation.
- › The simplified user interface and menu structure support practices in all daily activities.



Optimal sterilization programs

- › The Eco B sterilization program reprocesses 0.5 kg in 25 minutes.
- › Lina can reprocess up to 6 kg of load to meet all requirements of dental clinics.
- › The B Universal 121°C cycle even allows the reprocessing of sensitive items, including porous such as surgical clothing.



Design and maintenance

- › The easily removable cover allows effortless access to the water tanks without tools. Filling is particularly easy with the integrated funnel.
- › Thanks to the high level of reliability, the service interval is set to 4,000 cycles or 5 years.
- › The design impresses with its ergonomic and functional shape and fits in anywhere thanks to modular feet and compact layout.

Technical concepts **Realised visions**

Technology inside.

Not only the outside, but also the technical expertise inside makes the difference. The Lina sterilizer is based on a sophisticated technical concept that offers future-oriented possibilities and significantly simplifies your workflow.

Use the **technological upgrades** to master all challenges with your sterilizer – today and tomorrow!

How may you benefit from the **advanced technology**?



Enhanced traceability

- › The documentation is automatically saved via a high-capacity USB stick.
- › The barcode label printer provides additional support on traceability thanks to the opportunity to link cycle, sterilization package and patient.
- › The cycle report printer ensures adequate paper documentation of the cycle.



Advanced connectivity

- › The ioDent® system offers intelligent dental solutions and allows an advanced service support.
- › The W&H Steri App allows controlling and remote monitoring of the sterilizer. Moreover, cycle history back-up saved on smartphone ensures extra-safety.



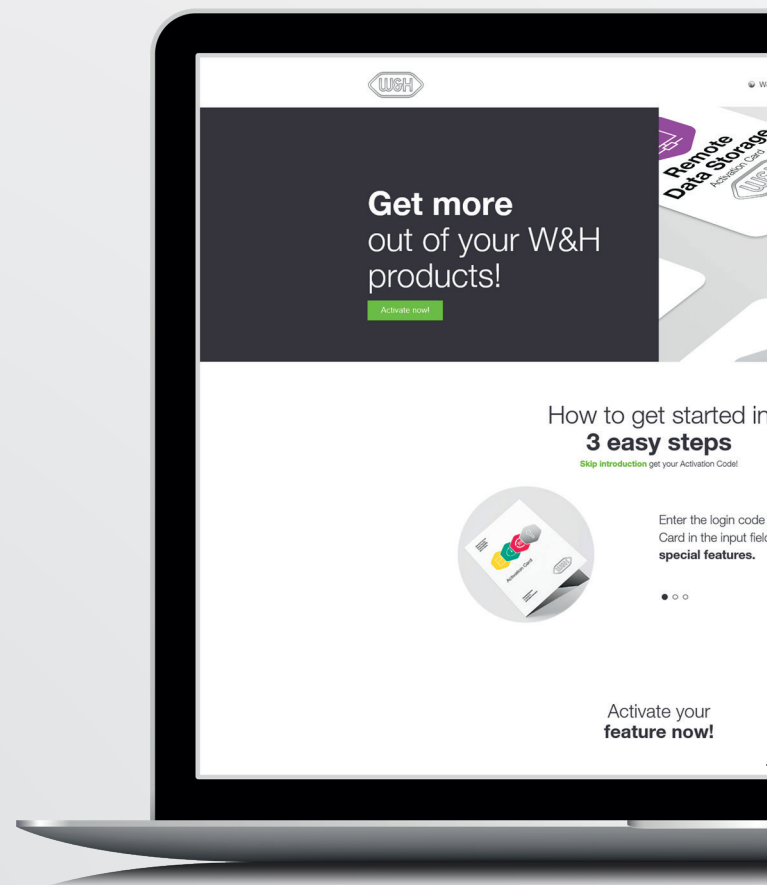
Unique upgradeability

- › The Activation Code system is an innovative upgradeability tool. Activation Codes offer a tailored opportunity to enhance additional features that meet your practice needs and comply with future requirements. Effectively, for customising and upgrading your Lina sterilizer.

Unique upgradeability

Covering individual needs.

Needs and requirements may change. Prepare yourself now: with the Activation Code system, additional functions can be activated to meet your changing practice needs and future requirements.



S naked

The “S naked” cycle feature ensures maximum speed for reprocessing unwrapped handpieces.



Remote data storage

The “Remote data storage” feature is the ideal addition for the digital cycle documentation. It offers the possibility to save cycles directly on PC.



Traceability

The “Traceability” feature enables user identification and load release confirmation. Identification is secured by a PIN directly on the Lina sterilizer and the W&H Steri App.



All in One

The “All in One” feature provides all benefits at once – and ultimately your sterilizer becomes an unattainable price-performance ratio.

Six steps to your customised sterilizer:

Step 1

Purchase the Activation Code of your choice by your local approved dental supplier.

Step 2

After you have received the related login code, go to **activation.wh.com**

Step 3

Enter this code along with serial number and model of your sterilizer.

Step 4

Your individual, secure Activation Code is generated.

Step 5

Enter this code in the menu of your Lina sterilizer.

Step 6

The feature is available.



Complete reprocessing

Sterilization, hygiene and maintenance are increasingly important in the dental practice. W&H offers best practice hygiene protocols as a complete solution for reprocessing your instruments and handpieces.



Appropriate accessories

W&H offers a wide range of accessories to optimise your workflow. Minor extras lead to major results. Work in the practice is easier and your team saves time.



Reversible rack

The best rack for your load:

- › for 3 large and 2 standard trays or 3 cassettes
- › for 6 trays or 3 cassettes



Barcode scanner

This enables you to scan labels into patient files.



Sprint

Print out cycle protocols on thermal paper with 10-year paper warranty.



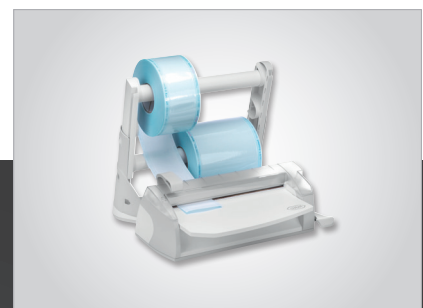
Barcode label printer

The label printer can be connected to the sterilizer to print barcodes. In combination with the integrated data logger, it improves your traceability system. The label printer is a quick and easy tool to link the sterilization cycle with patient files.



Multidem

Multidem supplies demineralized water for steam generation and can be used for many conventional sterilizers and other daily activities such as instrument rinsing. As a result, it ensures consistent and optimised performance, thereby extending the service life of your sterilizer.



Seal² and SealVal²

The W&H sealer creates a 12 mm wide seal in just two seconds with no risk of burning the sterilization package. The absolutely hermetic and strong protection of the sterile goods from environmental influences guarantees continuing sterility.

Technical data

Sterilization cycle		B Universal 134		B Prion 134		B Universal 121	S naked 134 (optional)
Temperature:		134°C		134°C		121°C	134°C
Holding time (minutes):		4'		18' 30''		20' 30''	4'
Total cycle duration (minutes) including complete drying:		Automatic from	Typical load	Automatic from	Typical load	Automatic from	Automatic from
	Lina 17	25'–49'	45'	40'–64'	60'	63'–71'	20'–26'
	Lina 22 (220 V)	28'–52'	48'	43'–67'	63'	65'–74'	21'–27'
	Lina 22 (110 V)	33'–63'	55'	47'–77'	69'	73'–82'	28'–35'
Lina 17 loads:		maximum 3.5–5.5(1) kg/typical 2 kg/maximum porous 0.5–1.5(2) kg maximum 4–6(3) kg/typical 2 kg/maximum porous 0.5–2(4) kg					max. 4 kg unwrapped
Lina 22 loads:							max. 4 kg unwrapped
Lina 17/22 containers:		maximum 6 kg					
Test cycles:		Helix/Bowie and Dick/Vacuum					
Items supplied with reversible rack, 3 aluminium trays, drain hose, tray holder, 8 GB USB stick, door opening tool, factory test							

- (1) Duration reported in the table refers to 3.5 kg. It is possible to sterilize up to 5.5 kg by drying time extension.
 (2) Duration reported in the table refers to 0.5 kg. It is possible to sterilize up to 1.5 kg by drying time extension.
 (3) Duration reported in the table refers to 4.0 kg. It is possible to sterilize up to 6.0 kg by drying time extension.
 (4) Duration reported in the table refers to 0.5 kg. It is possible to sterilize up to 2.0 kg by drying time extension.



Series: Type:	Lina 17	Lina 22
	Lina RIK-117	Lina RIK-122
Chamber size:	17 l	22 l
Power supply:	200-240 V AC; 50 Hz or 60 Hz; 10 A single phase	100-125 V AC; 50 Hz/60 Hz; 12 A single phase
		200-240 V AC; 50 Hz or 60 Hz; 10 A single phase
Power consumption:	2.0-2.4 kW	110 V: 1.2 - 1.5 kW
		220 V: 2.0 - 2.4 kW
Overall dimension (w x h x d):	465 x 452 x 646 mm	
Weight (empty):	40 kg	42 kg
Main/used water tanks:	4.8/4.8 l	
Working range:	7 to 10 cycles	
Usable space in chamber (w x h x d) ⁽¹⁾ :	195 x 195 x 312 mm	195 x 195 x 400 mm
Connection types:	1 USB port in the front (additional 1 in the rear as option), automatic water filling kit (optional)	

- (1) Usable space is referred to standard rack configuration

Lina sterilizers were designed, certified and validated with the most stringent directives and standards:

N°2017/745	Medical Device Regulation	IEC 61326-1	Electromagnetic compatibility
2014/68/EU	Pressure equipment Directive	IEC 61010-1	Safety requirements sterilizer
EN 13060	Small steam sterilizer	IEC 61010-2-040	Specific requirements for steam sterilizer
IEC 61770	Electric appliances connected to the water mains	The sterilizer can be validated according to EN ISO 17665-1	

W&H Sterilization Srl.

Via Bolgara, 2
 24060 Brusaporto (BG), Italy
 t +39 035-66 63 000
 f +39 035-50 96 988
 office.sterilization@wh.com
 wh.com

Pictures are for illustrative purposes only. Additional equipment and accessories shown are not included as standard.

20535 AEN Rev. 002 / 26.05.2021
 Subject to alterations