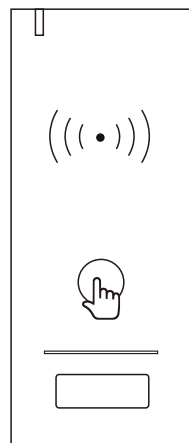


## Wireless Reader



User Manual

### 1.Introduction

The Wireless Reader Kit includes a Wireless Reader and a Receiver. 433MHz Rolling Code of encryption algorithm guarantees higher-secure, programmable Wiegand output of the Receiver makes it can work with most Wiegand controller in the world. Super strong 3M stickers provide a simple way for installing the Wireless Reader.

Because of ultra low power consumption, the battery of Wireless Reader can work as long as 6 months. (bases on 30 times /day)

#### Features

- 433MHz Rolling Code technology
- Card type: 13.56MHz Mifare card
- Programmable Wiegand output of the Receiver: 26 bits or 34 bits
- Communication distance: 30m maximum
- Ultra low power consumption
- Waterproof, conforms to IP65

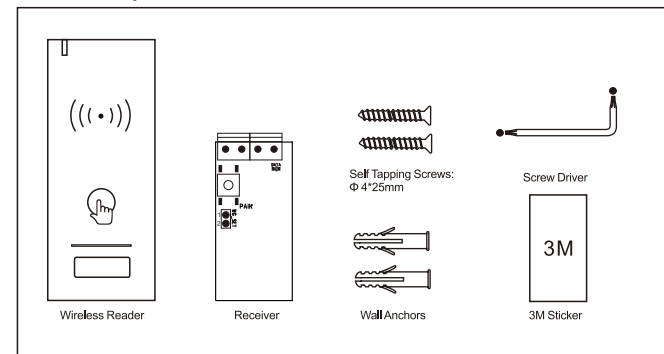
#### Specifications

<b>Wireless Reader</b>	Card Type	13.56MHz Mifare card
	Operating Voltage	3 units of AAA batteries
	Idle Current	≤5uA
	Working Current	≤35mA
	Reading Distance	≤3cm
	Communication Frequency	433MHz
	Communication Distance	30m Maximum
	Operating Temperature	-20°C~+60°C(-4°F~+140°F)
	Operating Humidity	0%~86%
	Index of Protection	IP65
	Color	Black, White optional
	Dimensions	L120 * W50 * H20 (mm)
	Net Weight	88g

- 01 -

<b>Receiver</b>	Operating Voltage	12V DC
	Working Current	≤15mA
	Communication Frequency	433MHz
	Wiegand Output Format	26 bits Or 34 bits (Default is 26 bits)
	Operating Temperature	-20°C~+60°C(-4°F~+140°F)
	Operating Humidity	0%~86%
	Dimensions	L25 * W50 (mm)
Net Weight	10g	

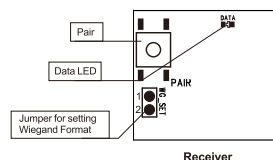
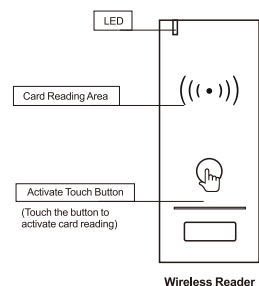
#### Carton Inventory



- 02 -

### 2. Application

#### Function Indicator

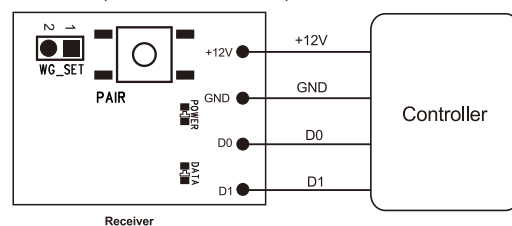


#### Receiver Port Definitions

Port	Function
+12V	12V DC Power Input
GND	Ground
D0	Wiegand Data 0 Output
D1	Wiegand Data 1 Output

- 03 -

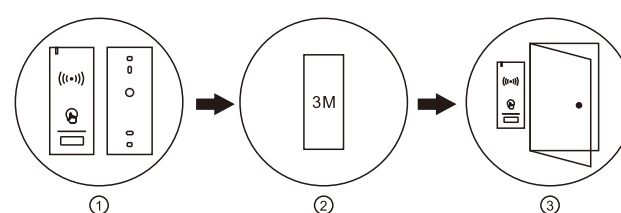
#### Connection (Receiver with Controller)



(The Receiver can be customized to match your controller structure)

#### Wireless Reader Installation

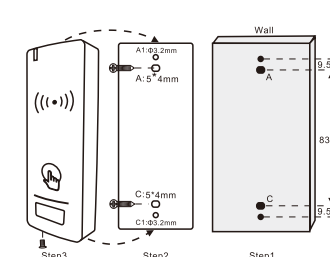
##### Method 1: Stick by 3M sticker (For metal door/glass door/smooth surface wall)



- ① Take out the back plate of Reader;
- ② Stick the back plate on the metal door/glass door/smooth surface wall;
- ③ Load the battery into Reader and screw it with the back plate to finish installation. (We use high-quality 3M sticker, the stickiness will be the best after sticking in 24 hours).

- 04 -

#### Method 2: Install by screws (For wall /wooden door)



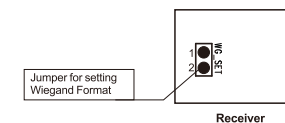
#### 3. User Operation

##### 1) Read Card

Touch the activate touch button, then read the card. (When the Wireless Reader isn't in use in 5s, it switches to a "sleep mode" to conserve power, please touch the activate touch button to wake it up when use.)

##### 2) Set Wiegand Output Format

(Factory default is 26 bits)



- 2-1) Set Wiegand 26 bits output: Insert Pin caps to points 1, 2 (WG\_SET)
- 2-2) Set Wiegand 34 bits output: Remove Pin caps from points 1, 2 (WG\_SET)

- 05 -

#### 3) Pair the Wireless Reader with Receiver

(They are already paired when out of factory, if no problem, the users do not need to do this operation in using.)

**Note:** 3-1) The Receiver can pair 16pcs of Wireless Readers maximum.

3-2) When pairing, all parts must be paired at the same time, then exit pairing mode. If need adding one more part, you still need to pair all parts again.

##### Step 1: Enter Pairing Mode

Press the 'Pair' button on the Receiver for 5 seconds, the green LED will be light on, means in the pairing mode;

##### Step 2: Pairing Wireless Reader

Touch the activate button on the Wireless Reader, reading a card, the green LED on Receiver will be light on for 0.5 second, means pairing successfully;

(Repeat step 2 if you want to pair more Wireless Readers)

##### Step 3: Exit Pairing Mode

Press the 'Pair' button on the Receiver for 0.5 second to exit pairing mode.

##### 4) Delete Wireless Reader

**Note:** This step will delete all paired Wireless Readers at once, please be careful. Press the 'Pair' button on the Receiver for 5 seconds, release it when the green LED light on, press the 'Pair' button again for 0.5 second, then all Wireless Readers will be deleted.

##### 5) Low Battery Warning

If the Wireless Reader makes 3 beeps and red LED shines 3 times when reading cards, means the battery is low, please change the battery in time.

#### 4. Sound and Light Indication

	Operation Status	Red LED	Green LED	Buzzer
<b>Wireless Reader</b>	Touch to activate	ON	--	--
	Read valid card	--	ON for 0.5 second	One beep
<b>Receiver</b>	Read card when low battery	Shines 3 times	--	3 beeps
	Stand-by	ON	--	--
	When read valid card on Wireless Reader	ON	ON for 0.5 second	--
	Pairing mode	--	ON	--

- 06 -