

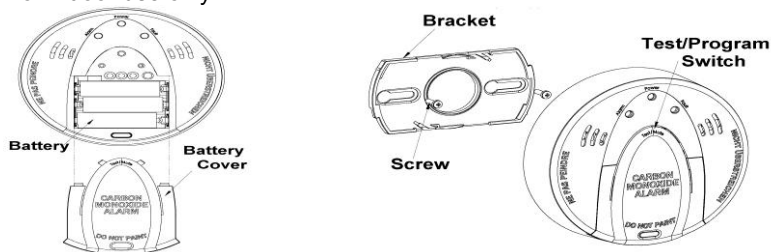
## Introduction

Thanks for choosing the Vision's wireless CO detector of the home security device. This detector is a Z-Wave™ enabled device (interoperable, two-way RF mesh networking technology) and is fully compatible with any Z-Wave™ enabled network. Every mains powered Z-Wave™ enabled device acts as a signal repeater and multiple devices result in more possible transmission routes which helps eliminate "RF dead-spots".

Z-Wave™ enabled devices displaying the Z-Wave™ logo can also be used with it regardless of the manufacturer, and ours can also be used in other manufacturer's Z-Wave™ enabled networks. This detector is designed to sense CO that comes into the detector chamber and send Z-Wave™ signal when the detector detects a certain density of CO, the horn of CO detector will sound.

## Product Description and Specification

\*\*\* For indoor use only \*\*\*



### Specification:

Protocol: Z-Wave™ (ZS6301N)

Frequency Range:

868.42MHz (ZS6301EU)

908.42MHz (ZS6301US)

921.42MHz (ZS6301BR)

Operating Range: Up to 100 feet line of sight

Operating Temp.: -10°C~ 50°C (14°F~122°F)

Battery: Panasonic CR123A \* 3PC

**Z-Wave™ Command Classes:**

COMMAND\_CLASS\_ALARM\_V2

COMMAND\_CLASS\_ASSOCIATION\_V1

COMMAND\_CLASS\_BATTERY

COMMAND\_CLASS\_MANUFACTURER\_SPECIFIC

COMMAND\_CLASS\_VERSION

COMMAND\_CLASS\_WAKE\_UP\_V2

### Package Content:

1pc ZS 6301 CO

1pc Detector

2pcs Bracket Holder

Plastic Anchor &

Screw

3pc Double A Battery

1pc Installation &  
Operation Manual

## Installation

Notice: If you are installing the entire Z-Wave™ system for the first time, please refer to the installation guide of Z-Wave™ Interface Controller before installing ZS6301.

1. Remove the bracket from the detector by rotating it counter-clockwise.
2. Place the bracket where you are going to install the detector. In each of keyhole slots, draw a mark to locate plastic anchor and screw. Using a 3/16-inch (5mm) drill bit, drills two holes at the marks and insert plastic anchor, and attached the bracket by using the screws.
3. Open the battery cover to insert the batteries, and then replace the cover. Fix the detector with bracket by rotating it clockwise.
4. For "**Inclusion**" in (adding to) a network: Put the Z-Wave™ Interface Controller into "inclusion" mode, and following its instruction to add the ZS 6301 to your controller. To get in the "inclusion" mode, the distance between detector and controller is suggested to be in one meter. Press the program switch of ZS 6301 for 1 second at least to be included.

For "**Exclusion**" from (removing from) a network: Put the Z-Wave™ Interface Controller into "exclusion" mode, and following its instruction to delete the ZS 6301 from your controller. Press the program switch of ZS6301 for 1 second at least to be excluded.

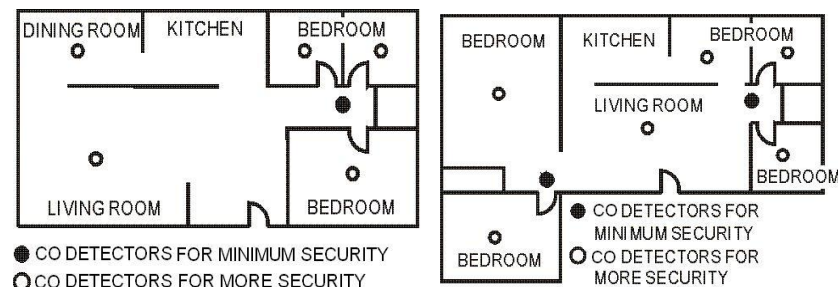
Please note: LED setting light will flash (red) continuously in Exclusion condition.

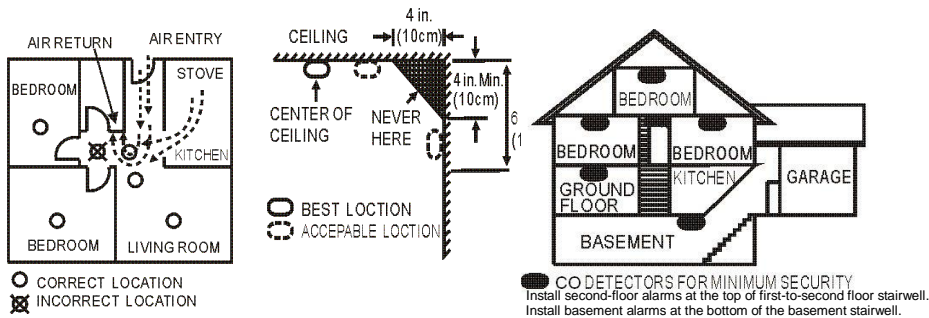
For "**Awake**" mode: it is to leave the "Sleep" mode by pressing the program switch for 1 sec. at least to allow the Z-Wave™ Interface Controller to do "Inclusion", "Exclusion", "Association" and to reply and receive the commands from controller. It will take about 5 sec. and the red LED light on for awaking the system. LED light will be off after setting.

For "**Association**": After "Awake" mode, then put the Z-Wave™ Interface Controller into "Association", and following its instruction to associate the ZS6301 with other device. Afterward the ZS6301 will get into "Sleep" mode for power saving. One association group supports 5 nodes.

For "**Auto Wake-up**" mode: The users could set Auto Wake-Up mode in min. 10 minutes to max. a week. Default setting is based on 1 hour, each increment in 200 sec.

5. Suggestion of the Smoke Detector Location:





## Operation

- Power-on Mode:** 1) Install the battery into the module 2) The detector will emit a beep in 0.5 second and the three LEDs will flash once quickly. 3) Close the bracket. The CO detector will alarm once remove the bracket.
- Stand-by Mode:** The Green LED flashes one time every 60 seconds.
- Alarm Mode (It's the status when the alarm is triggered.):** If a certain density of CO is detected, an audible alarm with 4 beeps, pause 5 seconds and 4 beeps will occur. The red LED will flash continuously and rapidly. Meanwhile, the CO detector will send an alarm report (type: CO alarm, state: alarm) to the user's controller and also the CO detector will send an alarm report (type: CO alarm, state: No alarm) while the alarm off.
- Error Mode:** If the CO detector beep once and yellow LED flash three times every minute, it indicates the CO detector is not working properly. Please require to repair or service.
- Low battery warning Mode:** The yellow LED will flash once every minute with a "beep" sound.
- Low sensitivity Mode:** The yellow LED will flash twice every minute with a "beep" sound. It indicates the CO detector has internal problem, please replace the unit.
- Tamper Mode:** The yellow LED will go solid and the detector will emit a short beep every minute until the CO detector is mounted back to the bracket properly.
- End of life signal Mode:** The yellow LED will flash four times every minute with a short "beep" sound. It indicates the CO detector is reaching to the end of useful life, please replace with a new unit.
- Testing Mode:** Test the alarm by pushing test switch until the user hear 4 short beeps and three LEDs flash synchronously in five seconds. Then, the CO detector will send an alarm report (type: CO alarm, state: alarm) to the user's controller and also the CO detector will send an alarm report (type: CO alarm, state: No alarm) while the alarm off. Please note if the CO detector only beep once and yellow LED flash three times every minute, it indicates the CO detector is not working properly. Please require to repair or service.
- Battery Power indicator:** The detector will report the current status of battery capacity to the user's controller.
- Self-Protection Mode:** If the cover of detector removed from bracket after 8 sec, the detector will send an alarm report (type:0\*02, level:0\*FF) to the Z-Wave Interface Controller, and the Yellow LED will on continuously and the detector will sound.

- Silence Mode:** The user could press the test switch to get into silence mode to turn off the alarm temporarily when the CO detector alarm. Meanwhile, the red LED will flash continually. The silence function will automatically turn into normal operation if the CO concentration around the CO detector is still at alarming level after 4 minutes of silence mode.

## Federal Communications Commission Statement

This equipment has been followed to comply with the limits for a Class B digital device, pursuant to Part 15 of the FCC Rules. These limits are designed to provide reasonable protection against harmful interference in a residential installation. This equipment generates, uses and can radiate radio frequency energy and, if not installed and used in accordance with the instruction, may cause harmful interference to radio communications. However, there is no guarantee that interference will not occur in a particular installation. If this equipment does cause harmful interference to radio or television reception, which can be determined by turning the equipment off and on, the user is encouraged to try and correct the interference by one of the following measures:

- Reorient or relocate the receiving antenna,
- Increase the separation between the equipment and receiver,
- Connect the equipment into an outlet on a circuit different from that to which the receiver is connected.
- Consult the dealer or an experienced radio/TV technician for help.

This device complies with Part 15 of the FCC Rules. Operation is subject to the following two conditions: (1) this device may not cause harmful interference, and (2) this device must accept any interference received, including interference that may cause undesired operation.

FCC Caution: Any changes or modifications not expressly approved by the party responsible for compliance could void the user's authority to operate this equipment.

## Limited Warranty

Vision Guarantees that every wireless CO detector is free from physical defects in material and workmanship under normal use for one year from the date of purchase. If the product proves defective during this one-year warranty period, Vision will replace it free of charge. Vision does not issue any refunds. This warranty is extended to the original end user purchase only and is not transferable. This warranty does not apply to: (1) damage to units caused by accident, dropping or abuse in handling, or any negligent use; (2) units which have been subject to unauthorized repair, opened, taken apart, or otherwise modified; (3) units not used in accordance with instruction; (4) damages exceeding the cost of the product; (5) transit damage, initial installation costs, removal cost, or reinstallation cost.

For information on additional devices, please visit us at [www.visionsecurity.com.tw](http://www.visionsecurity.com.tw)

**WARNING:** The carbon monoxide sensing unit has only 5-year limited life. For the security issue, we strongly recommend the user to change whole the CO detector after 4-year usage.



## **Installation & Operation Manual**

**ZS 6301 US**

**ZS 6301 EU**

**ZS 6301 BR**

**Wireless CO Detector**