



TOPICS:

Keramisches
Schutz Spray

Tech Edition Nr. 12

05/13

MB

ABIMIG®

Push-Pull

RAB

Zubehör

ABICOR BINZEL

5



Lieferbar ab Juni 2013

Bezeichnung
Keramisches Schutz Spray

Bestellnummer
192.0196.1

Kontakt: Thomas Heyn – Customer Service Export Department
Telefon: ++49 (0) 64 08/59-108 / Fax: ++49 (0) 64 08/59-408
E-mail: heynt@binzel-abicor.com

www.binzel-abicor.com



ABICOR
BINZEL
TECH edition

TOPICS:

Keramisches
Schutz Spray

Tech Edition Nr. 12

05/13

MB

ABIMIG®

Push-Pull

RAB

Zubehör

/



30



10-15

/



5

1 3





ABICOR
BINZEL
TECH edition

TOPICS:

Keramisches
Schutz Spray

Tech Edition Nr. 12

05/13

MB

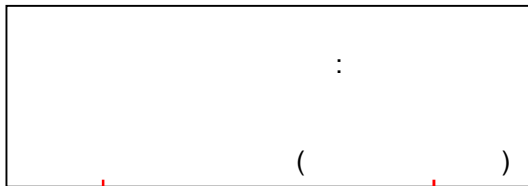
ABIMIG®

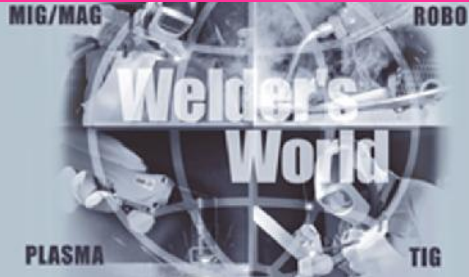
Push-Pull

RAB

Zubehör

/





ABICOR
BINZEL
TECH edition

TOPICS:

Keramisches
Schutz Spray

Tech Edition Nr. 12

05/13

MB

ABIMIG®

Push-Pull

RAB

Zubehör

/

/

... ..

.

,

(

,

)

,

.

(

,

)

.

:



-
-
-
-
-
-

TOPICS:
Ceramic protective spray
Tech Edition No. 12

05/13

MB **ABIMIG®** **Push-Pull** **RAB** **Accessories**

Ceramic protective spray

The Ceramic protection spray of ABICOR BINZEL is produced by its own special recipe and is silicone-free.

This new developed protection spray is particularly suited for automated application with long welding processes

After spraying the protective spray leaves a white, ceramic protective film, after a drying time of only 5 seconds, the welding process can be started.

It can also be used for spraying to welding equipment and to welded components. The spatter adhesion is significantly reduced.

A further advantage is the insulating properties of the spray. This means that the protective film is not electrically conductive, which ensures optimum ignition and a stable arc.



Available from June 2013

Description
Ceramic protective spray

Part-No.
192.0196.1

Contact: Thomas Heyn – Customer Service Export Department
Phone: ++49 (0) 64 08/59-108/ Fax: ++49 (0) 64 08/59-408
E-mail: hey@binzel-abicor.com

www.binzel-abicor.com

Ceramic protective spray / handling



For best results, the protective spray is to mix the ingredients for 30sec. shake out.



By uniformly spraying from a distance of 10-15 cm, a protective film is formed on the parts to be protected.

Spray the contact tip / gas diffusor



Sprayed-on gas nozzle



When spraying, make sure that the gas holes are not clogged with the protective spray and thus it comes to problems with the gas coverage.



After a drying time of only 5 seconds can be started with the welding process.



After use, the valve is by overturning the can and spray for 1-3sec to clean to avoid clogging of the spray head.



TOPICS:

Ceramic protective spray

Tech Edition No. 12

05/13

MB

ABIMIG®

Push-Pull

RAB

Accessories

Ceramic protective spray / Notes

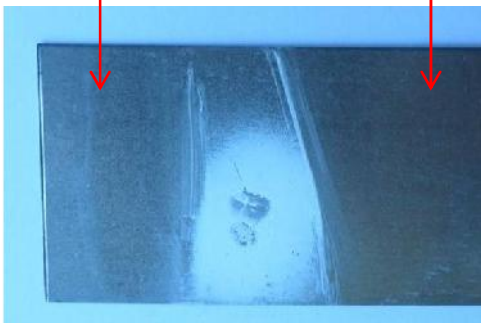
Cleaning off:

The cleaning of the protective film can also after to the welding process, be done with common household cleaners. In some cases, cleaning with dry towels is possible. The best cleaning results however were achieved with cleaning products that are mixed with alcohol (ethyl alcohol) or with alcohol (ethyl alcohol) directly.

Cleaning on a sheet, after a long drying time with:

Common household cleaners

alcohol
(ethyl alcohol)



Cleaning on a gas nozzle after the welding process with:

Common household cleaners

alcohol
(ethyl alcohol)



TOPICS:
Ceramic protective spray
Tech Edition No. 12

05/13

MB ABIMIG® Push-Pull RAB Accessories

Ceramic protective spray / Notes

When using the protection spray is to provide adequate protection of control panels / touchpad etc.. to respect, because the protection spray through its insulating property at these components can lead to impairments.


The insulating property of ceramic sprays should also be considered in the heat, because the heat of the sprayed components (gas nozzle, contact tip) are no longer given out. This can in the higher power range of the burner lead to limitations.

In order to ensure optimum gas cover, care must be taken when applying the protection sprays, make sure that the gas holes are not clogged with the protection spray.

The cleaning of the protective film on rough or scratched surfaces of welding equipment, to be welded components and gas nozzles may under certain circumstances not be done without leaving any residue and must be checked in particular cases.

After the cleaning of the protective film, is generally before after treatment (coating, painting), perform a test.

Safety information:

- **Flammable** 
- **Do not spray on hot or glowing parts**
- **Do not spray on an open flame**
- **Do not spray into cavities**
- **Use only in well –ventilated areas**
- **Do not place spray can in spark and spatter areas**

Additional information available on the EG-Safety data pages.